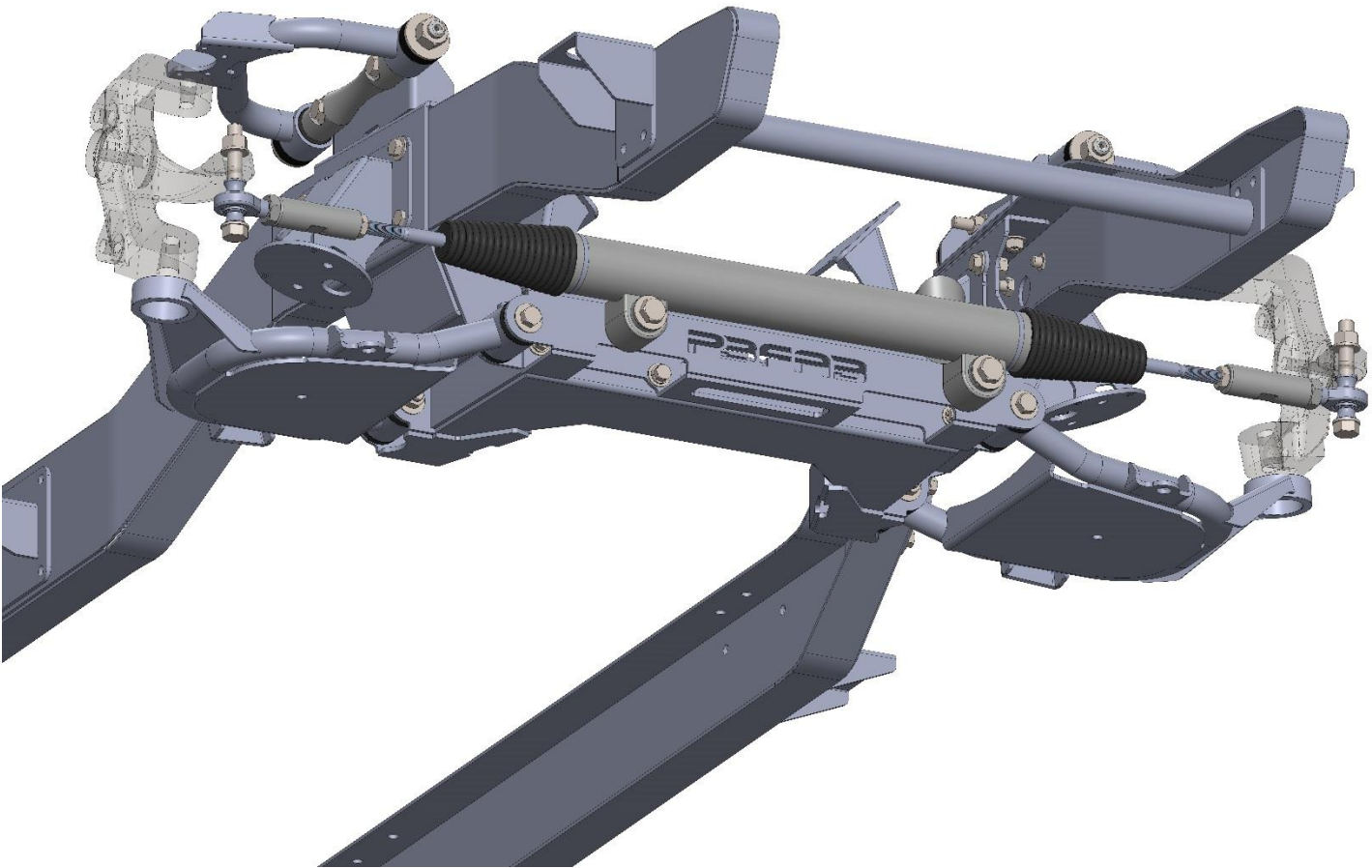


# **RACK AND PINION INSTALLATION GUIDE**

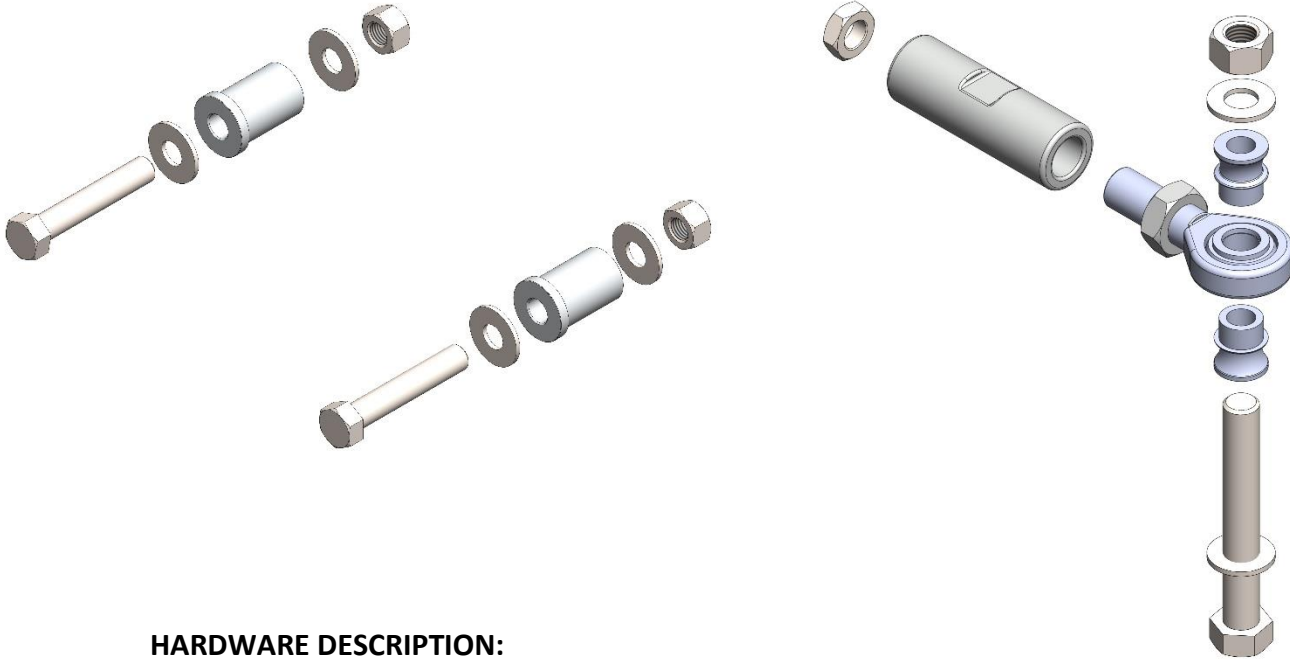
**\*\*\* DROPMEMBER VERSION 7 SPECIFIC \*\*\***



1/17/2020

**PART# RPH**

**DESCRIPTION: RACK AND PINION HARWDARE KIT**



**HARDWARE DESCRIPTION:**

3/4 LH – 3/4 BORE ROD END WITH JAM NUT (QTY.2)

TIE ROD ADJUSTER SLEEVE (QTY.2)

9/16-18 RH JAM NUT (QTY.2)

BILLET RACK MOUNT BUSHING (QTY.2)

9/16 X 3.5 GRADE 8 BOLT USS (QTY.2)

9/16 GRADE 8 FLAT WASHER USS (QTY.4)

9/16 GRADE 8 NYLOC NUT USS (QTY.2)

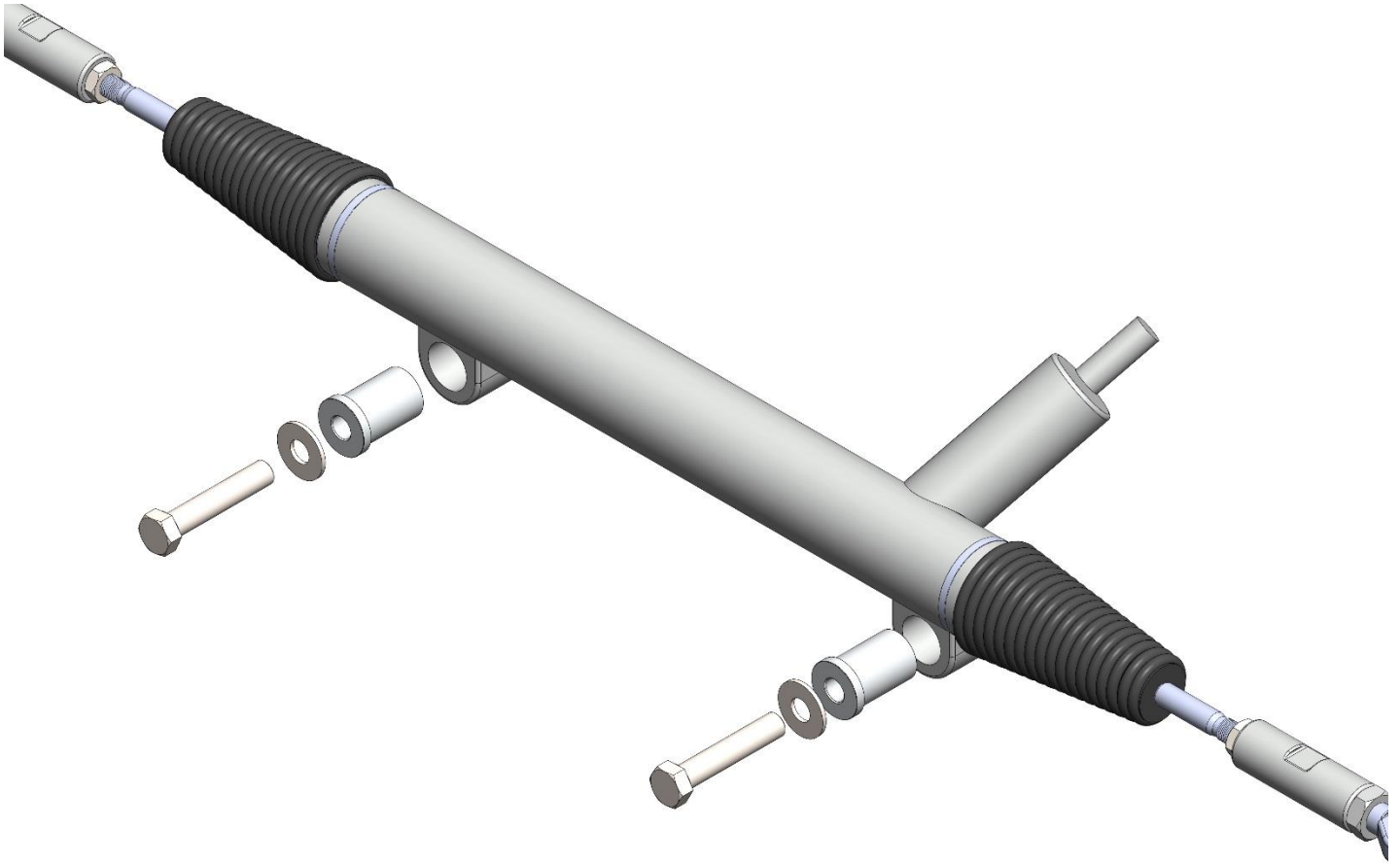
5/8 X 4.5 GRADE 8 BOLT USS (QTY.2)

5/8 GRADE 8 NYLOC NUT USS (QTY.2)

5/8 GRADE 8 FLAT WASHER SAE (QTY.4)

3/4 TO 5/8 MISALIGNMENT SPACER (QTY.4)

## **-RACK AND PINION INSTALLATION**



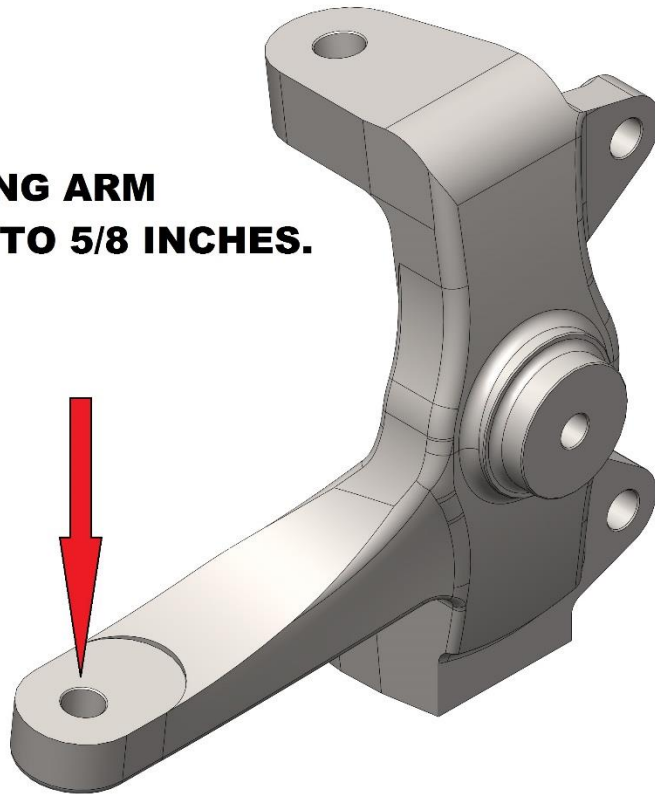
**-USE SUPPLIED STEPPED ALUMINUM BUSHINGS AND 9/16 X 3.5" GRADE 8 BOLTS WITH FLAT WASHERS AND NYLOC NUTS.**

**-IF THE RACK AND PINION HAS RUBBER MOUNTING BUSHINGS PRESSED INTO THE BODY, REMOVE THEM AND USE THE SUPPLIED ALUMINUM BUSHINGS.**

**\*\*\*CONTINUED ON NEXT PAGE\*\*\***

**-RACK AND PINION INSTALLATION CONTINUED**

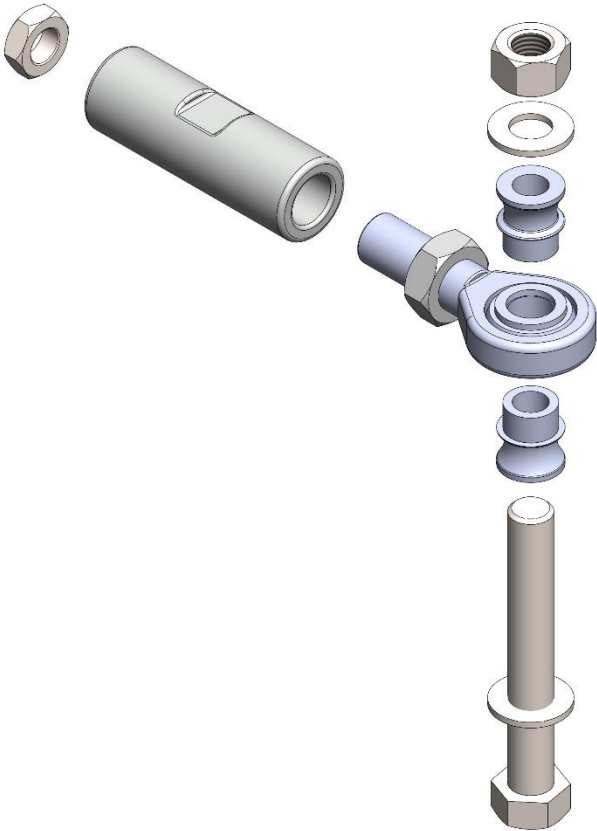
**SPINDLE'S STEERING ARM  
MUST BE DRILLED TO 5/8 INCHES.**



**-THE SPINDLE STEERING ARM WILL NEED TO BE DRILLED OR REAMED  
TO 5/8" FOR THE TIE ROD BOLT TO BE INSTALLED**

**\*\*\*CONTINUED ON NEXT PAGE\*\*\***

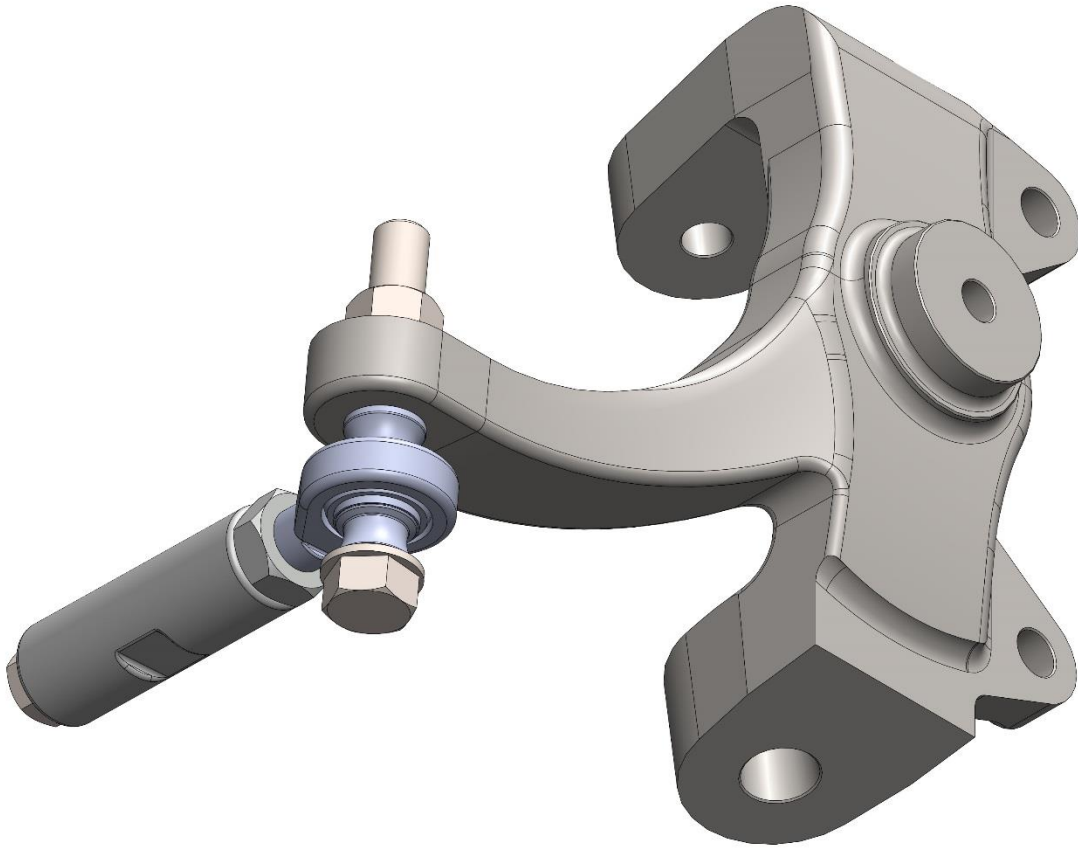
**-RACK AND PINION INSTALLATION CONTINUED**



**-TIE ROD END HARDWARE EXPLODED VIEW**

**\*\*\*CONTINUED ON NEXT PAGE\*\*\***

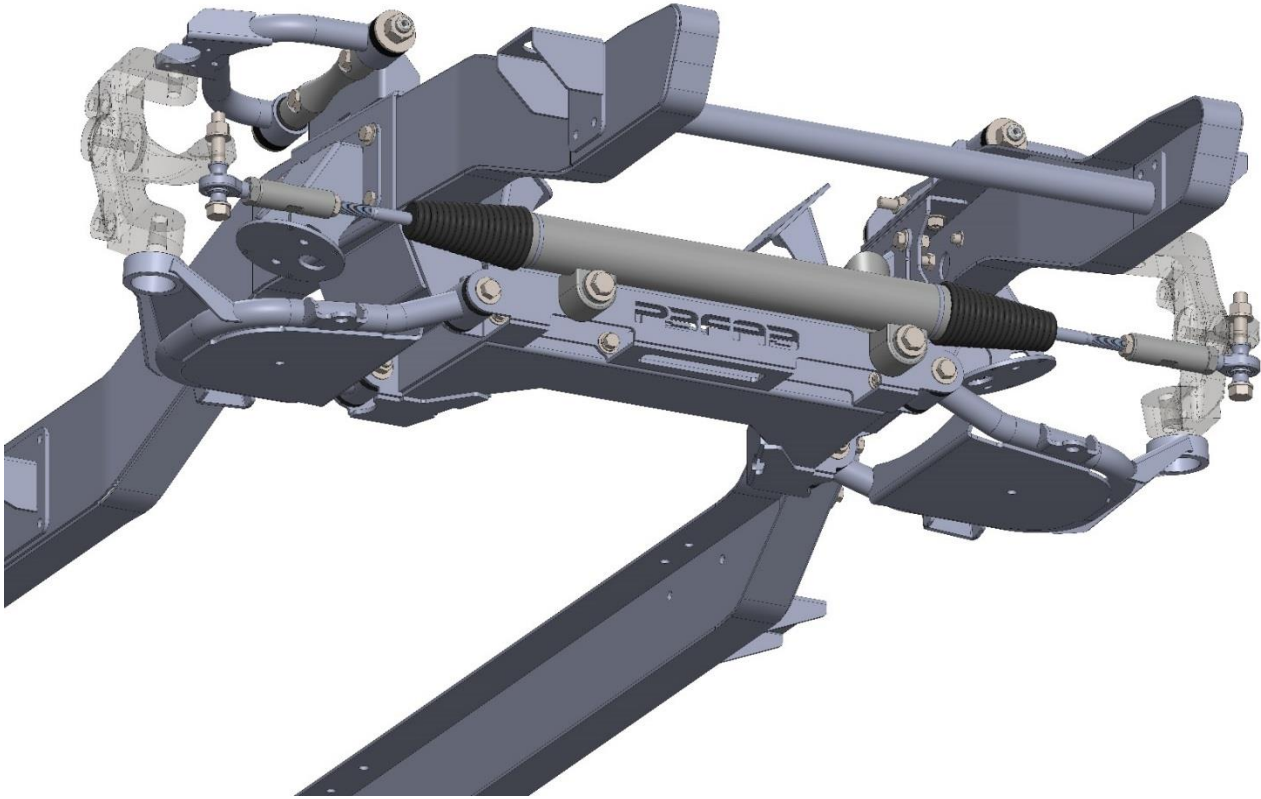
**-RACK AND PINION INSTALLATION CONTINUED**



**-TIE ROD ASSEMBLY WILL MOUNT TO BOTTOM SIDE OF SPINDLE'S STEERING ARM.**

**\*\*\*CONTINUED ON NEXT PAGE\*\*\***

## -RACK AND PINION INSTALLATION CONTINUED



-IT MAY BE NECESSARY TO TRIM THE THREADED END OF THE RACK AND PINION TIE ROD TO ACHIEVE PROPER ALIGNMENT

-TO CONFIRM IF TRIMMING OF THE RACK IS NECESSARY, MOCK UP TIE ROD END TO SPINDLE; IF WHEELS TOE-OUT THE THREADED TIE ROD PORTION OF THE RACK WILL NEED TO BE TRIMMED

-IF TRIMMING IS IN FACT NECESSARY, TRIM 1/2 INCHES PER SIDE AT A TIME. IT'S BETTER TO REMOVE TOO LITTLE RATHER THAN TOO MUCH MATERIAL

**\*\*\*BEFORE TRIMMING, INSTALL 9/16 JAM NUT ALL THE WAY TO END OF THREADS; AFTER CUTTING THREADS, UNSCREW JAM, USING IT TO HELP CHASE THE THREADS\*\*\***