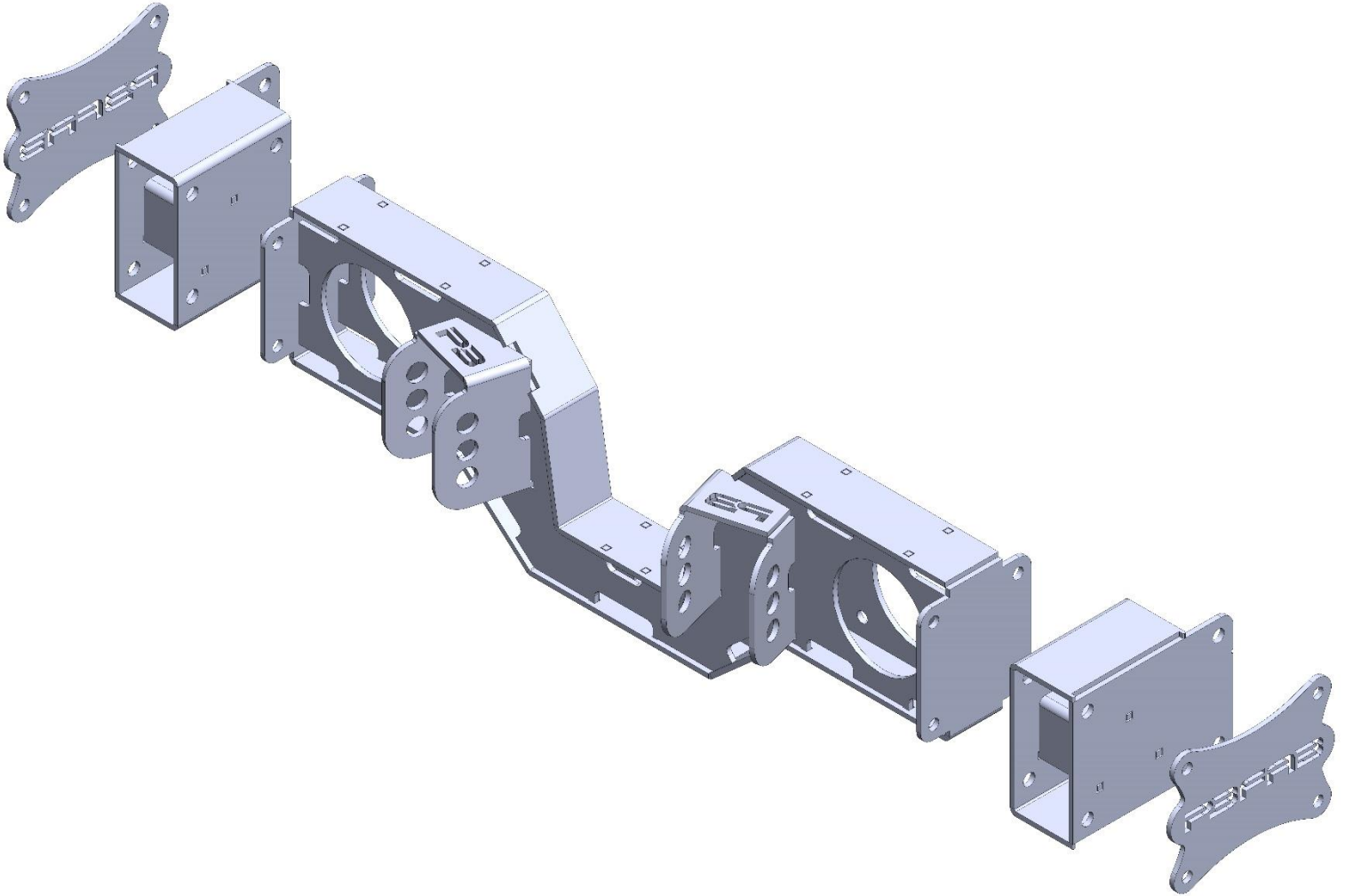


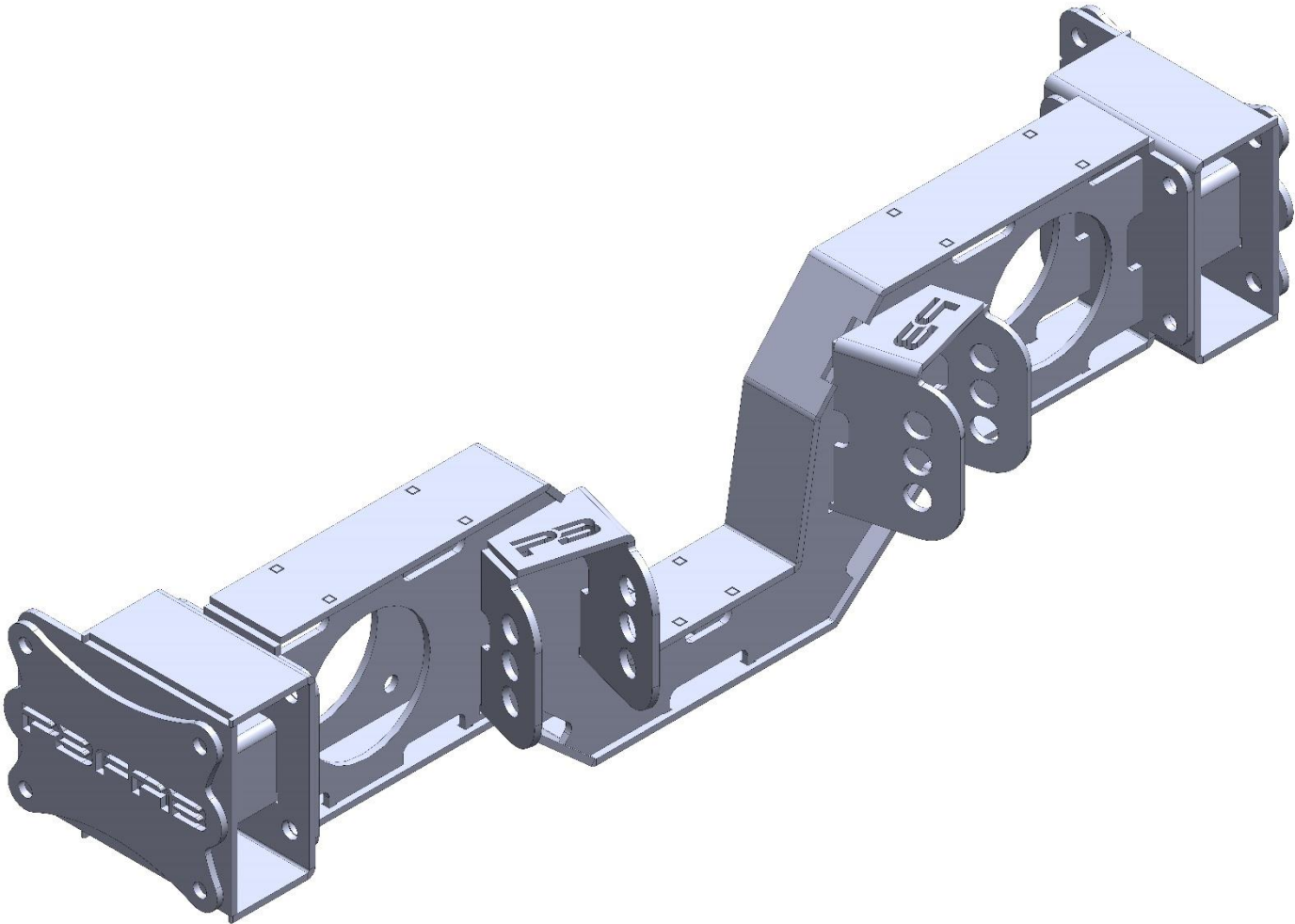
**INSTALLATION GUIDE**  
**BOXED TRAILING ARM CROSSMEMBER 1-PIECE**  
**63-72 C10**



**1/27/2020**

**PART#** TAXM6372-1P-BOXED

**DESCRIPTION:** TRAILING ARM CROSSMEMBER; 63-72 C10; BOXED DESIGN; ONE  
PIECE DRIVE SHAFT



**HARDWARE DESCRIPTION:**

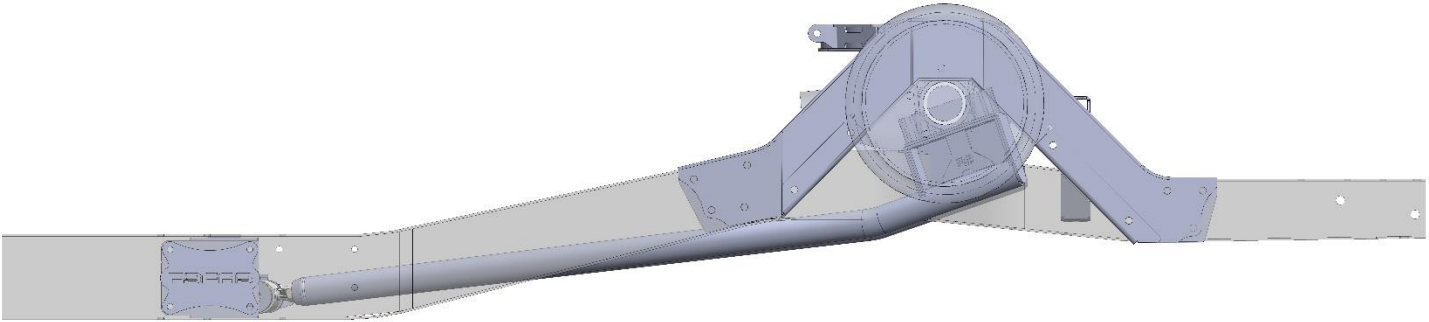
7/16 X 1.25 GRADE 8 BOLT USS (QTY. 20)

3/8 GRADE 8 FLAT WASHER USS (QTY. 40)

7/16 GRADE 8 NYLOC NUT USS (QTY. 20)

7/16 GRADE 8 LOCKWASHER (QTY. 4)

## INSTALL TRAILING ARM X-MEMBER (AIRBAG SUSPENSION)

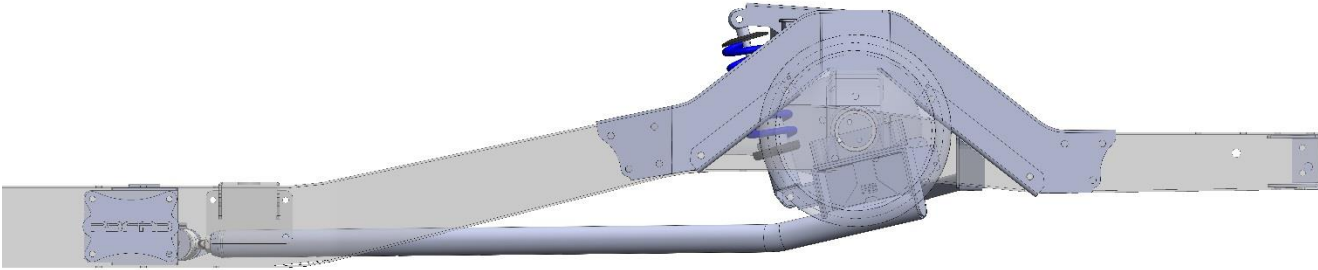


- SEE FINAL PAGE FOR FRAME BRACKET ORIENTATION
- SLIDE THE TRAILING ARM CROSSMEMBER; TRAILING ARMS; AND REAR DIFFERENTIAL INTO THE FRAME RAILS
- FULLY COMPRESS THE REAR DIFFERENTIAL SO THAT IT BOTTOMS OUT IN THE NOTCH
- ENSURE THE REAR DIFFERENTIAL IS IN THE CENTER OF THE NOTCH
- ENSURE THE TRAILING ARM X-MEMBER IS SQUARE IN THE FRAME
- MARK AND DRILL HOLES FOR TRAILING ARM X-MEMBER MOUNTING BRACKETS (SEE IMAGES ON LAST PAGE FOR ORIENTATION)
- USE SUPPLIED 7/16 X 1.25 GRADE 8 HARDWARE; TORQUE TO 65 FT-LBS

### NOTES:

**\*\*\* THE REAR SUSPENSION IS DESIGNED SO THAT THE AXLE CENTERLINE COINCIDES WITH THE WHEEL WELL CENTERLINE WHEN THE SUSPENSION IS FULLY COMPRESSED. THE AXLE WILL BE REARWARD OF THE WHEEL WELL CENTERLINE AT RIDE HEIGHT\*\*\***

## INSTALL TRAILING ARM X-MEMBER (COIL-OVER OR COIL SPRING SUSPENSION)



- SEE FINAL PAGE FOR FRAME BRACKET ORIENTATION
- SLIDE THE TRAILING ARM CROSSMEMBER; TRAILING ARMS; AND REAR DIFFERENTIAL INTO THE FRAME RAILS
- SET THE REAR DIFFERENTIAL SO THAT IT IS AT THE DESIRED RIDE HEIGHT
- ENSURE THE REAR DIFFERENTIAL IS IN THE CENTER OF THE NOTCH WITH REAR SUSPENSION AT DESIRED RIDE HEIGHT
- ENSURE THE TRAILING ARM X-MEMBER IS SQUARE IN THE FRAME
- MARK AND DRILL HOLES FOR TRAILING ARM X-MEMBER MOUNTING BRACKETS (SEE IMAGES ON NEXT PAGE FOR ORIENTATION)
- USE SUPPLIED 7/16 X 1.25 GRADE 8 HARDWARE; TORQUE TO 65 FT-LBS

### NOTES:

**\*\*\* THE COIL OVER REAR SUSPENSION IS DESIGNED SO THAT THE AXLE CENTERLINE COINCIDES WITH THE WHEEL WELL CENTERLINE WHEN THE SUSPENSION IS AT ITS RIDE HEIGHT\*\*\***

## FRAME MOUNTING BRACKET ORIENTATION

-THE FRAME MOUNTING BRACKET NEEDS TO BE POSITIONED SO THAT THE NOTCHES ARE HIGH AND TOWARDS THE FRONT OF THE FRAME

-THE PBFAB LOGO PLATE WILL MOUNT ON THE OUTSIDE OF THE FRAME

