

2

1

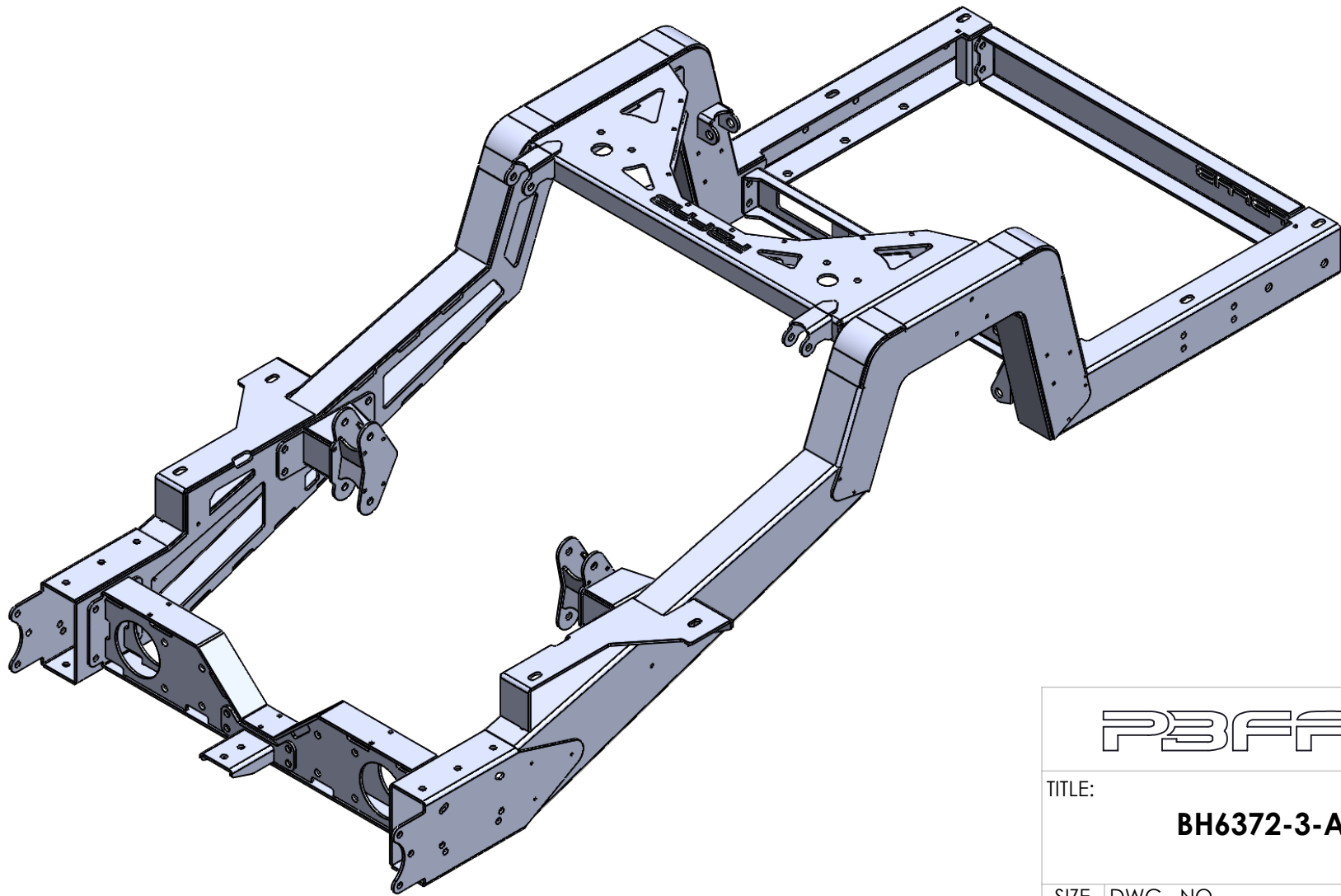
**63-72 LEVEL 3 BACK-HALF INSTALLATION GUIDE
 (INBOARD BAG; INBOARD 4-LINK; INBOARD SHOCKS)
 SET UP FOR 24X15 REAR WHEEL**

B

B

A

A



P3FAB

TITLE:

BH6372-3-A

SIZE	DWG. NO.	REV
A		

2

1

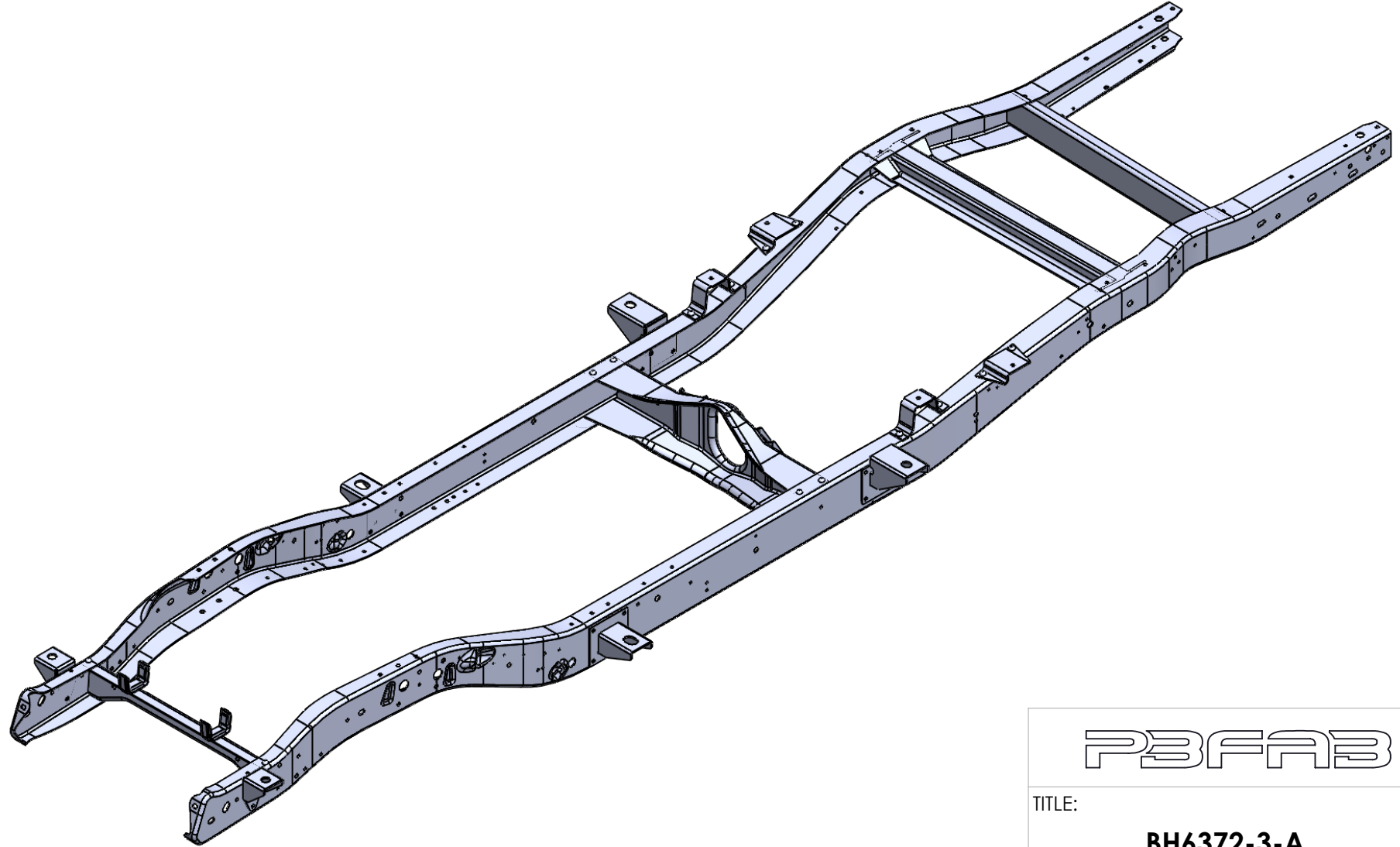
2

1

1963-1972 C10 BACK-HALF INSTALLATION FRAME CUT
 (SAME FOR LONG AND SHORT WHEEL BASE APPLICATIONS)

B

B



A

A

P3FAB

TITLE:

BH6372-3-A

SIZE

A

DWG. NO.

REV

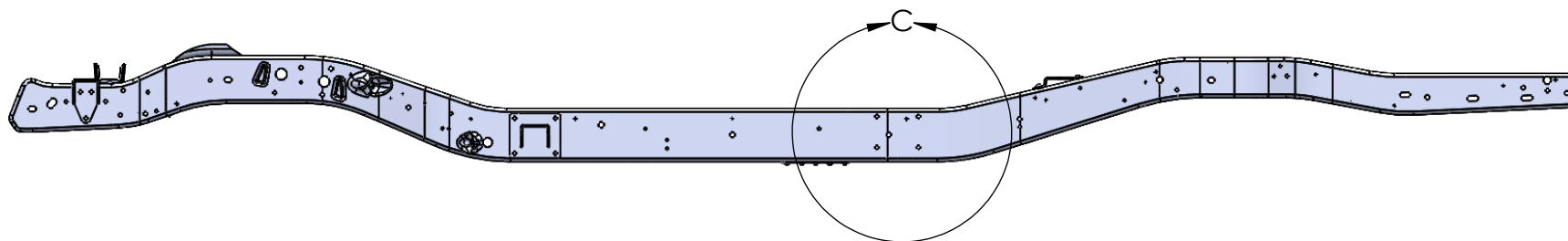
2

1

2

1

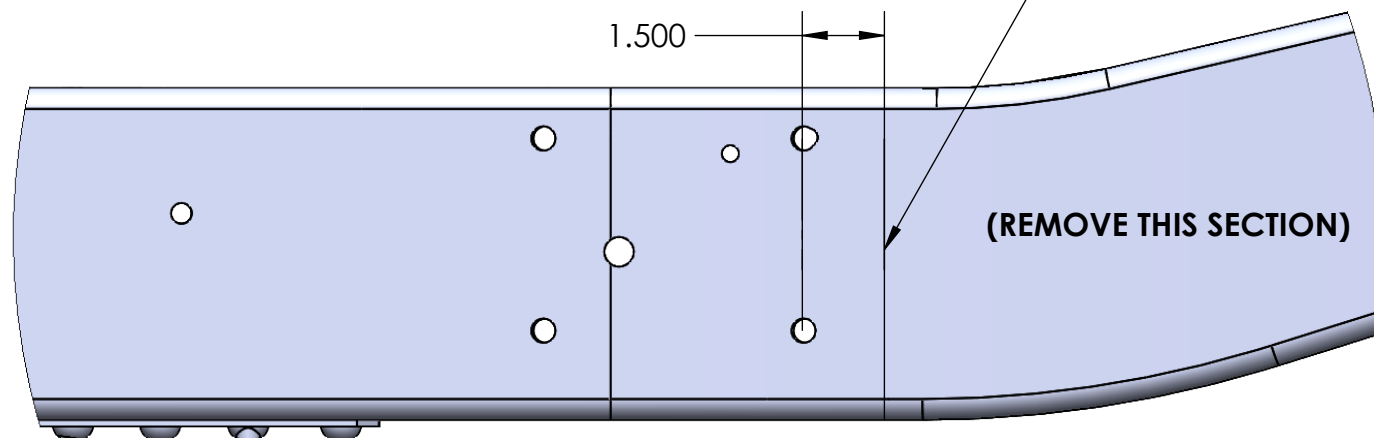
MARK AND CUT FRAME (CONTINUED NEXT PAGE)



B

B

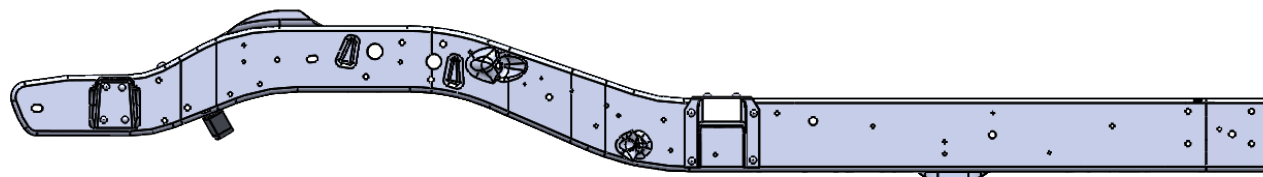
MARK 1.5 INCHES REARWARD OF FACTORY REAR CAB MOUNT MOUNTING HOLES CENTERLINE



(REMOVE THIS SECTION)

A

A



P3FAB3

TITLE:

BH6372-3-A

SIZE
A

DWG. NO.

REV

2

1

2

1

MARK AND CUT FRAME (CONTINUED)

-BACK-HALF ASSEMBLY WILL SLIDE OVER FACTORY FRAME RAILS AND USE ORIGINAL CAB MOUNTING HOLES FOR LOCATING/ALIGNMENT

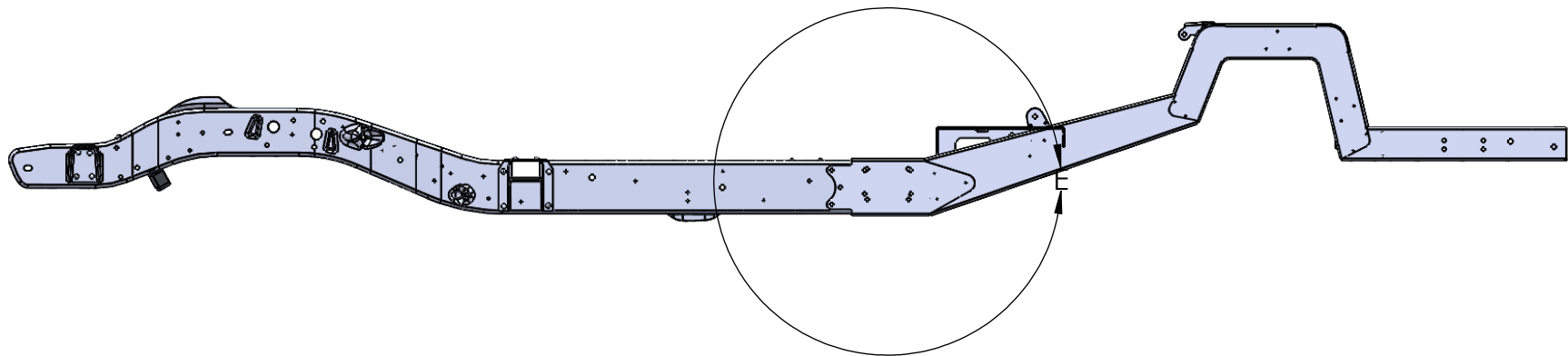
-USE THE BACK-HALF TO FRAME TIE IN AS A TEMPLATE TO MARK AND DRILL MOUNTING HOLES

-RE-INSTALL THE FACTORY REAR CAB MOUNTS ON OUTSIDE FACE OF BACK-HALF ASSEMBLY

-USE SUPPLIED 7/16 GRADE 8 HARDWARE AND TORQUE TO 65 FT LBS

B

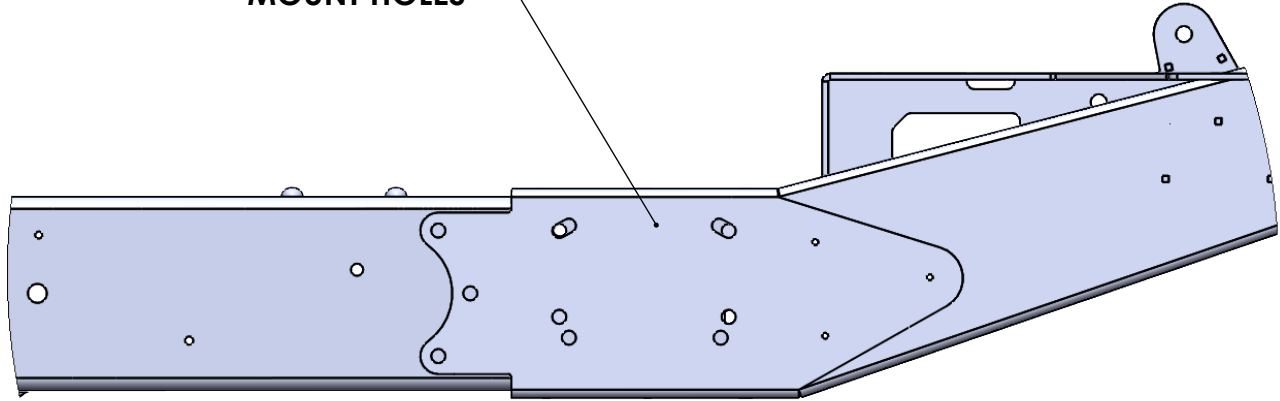
B



BACK-HALF HAS DUAL PATTERN TO ALIGN WITH 63-66 AND 67-72 CAB MOUNT HOLES

A

A



P3FAB		
TITLE:		
BH6372-3-A		
SIZE	DWG. NO.	REV
A		

2

1

2

1

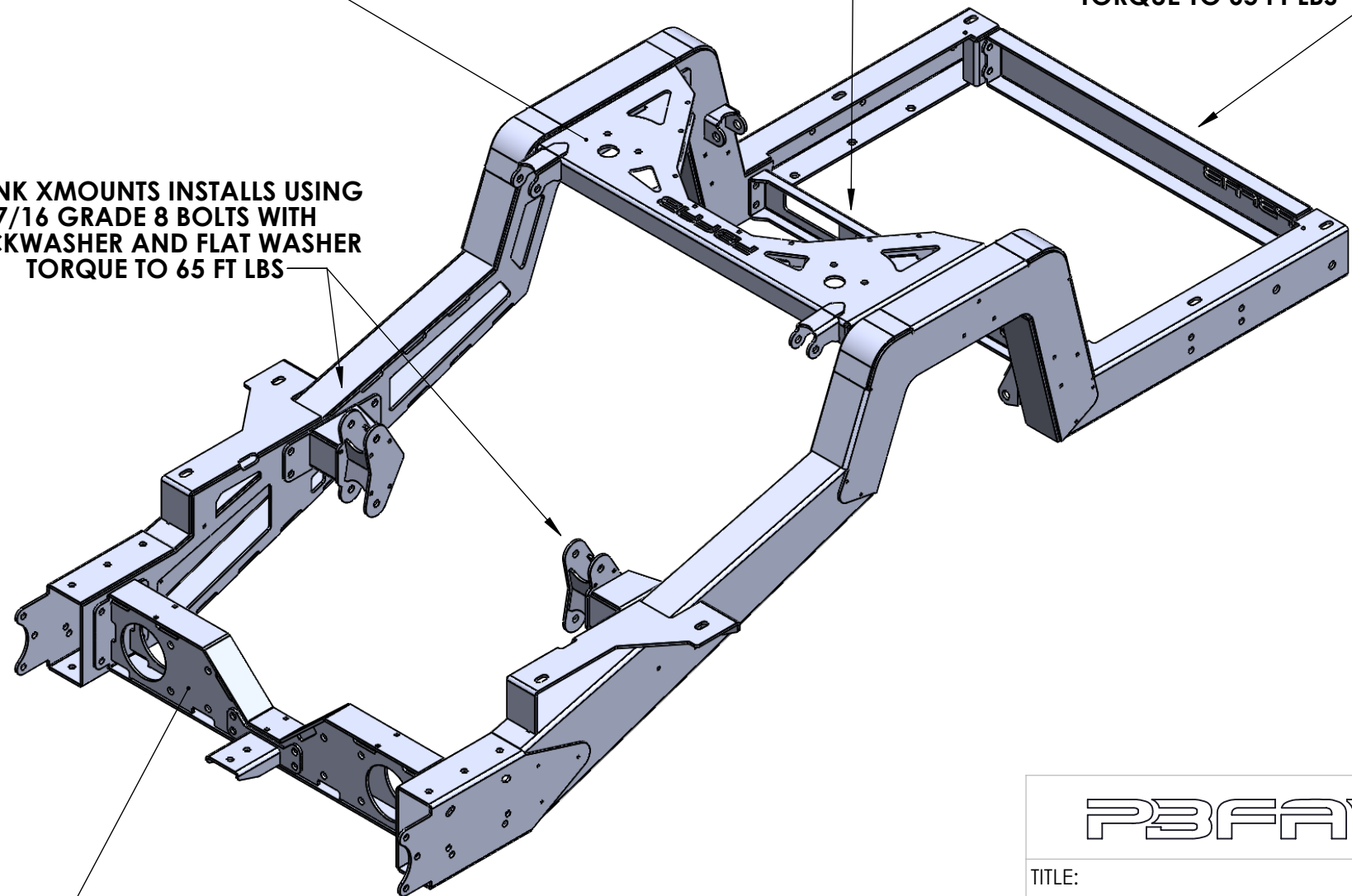
BRIDGE ASSEMBLY INSTALLS USING
7/16 GRADE 8 BOLTS WITH
LOCKWASHER AND FLAT WASHER
TORQUE TO 65 FT LBS

REAR NOTCH X-MEMBER INSTALLS
USING 7/16 GRADE 8 BOLTS WITH
LOCKWASHER AND FLAT WASHER
TORQUE TO 65 FT LBS

REAR FRAME X-MEMBER INSTALLS
USING 7/16 GRADE 8 BOLTS WITH
NYLOC NUT AND FLAT WASHERS
TORQUE TO 65 FT LBS

4-LINK XMOUNTS INSTALLS USING
7/16 GRADE 8 BOLTS WITH
LOCKWASHER AND FLAT WASHER
TORQUE TO 65 FT LBS

CARRIER BEARING X-MEMBER
INSTALLS USING 7/16 GRADE 8 BOLTS
WITH NYLOC NUT AND FLAT WASHERS
TORQUE TO 65 FT LBS



B

B

A

A

P3FAB

TITLE:

BH6372-3-A

SIZE DWG. NO. REV

A

2

1

2

1

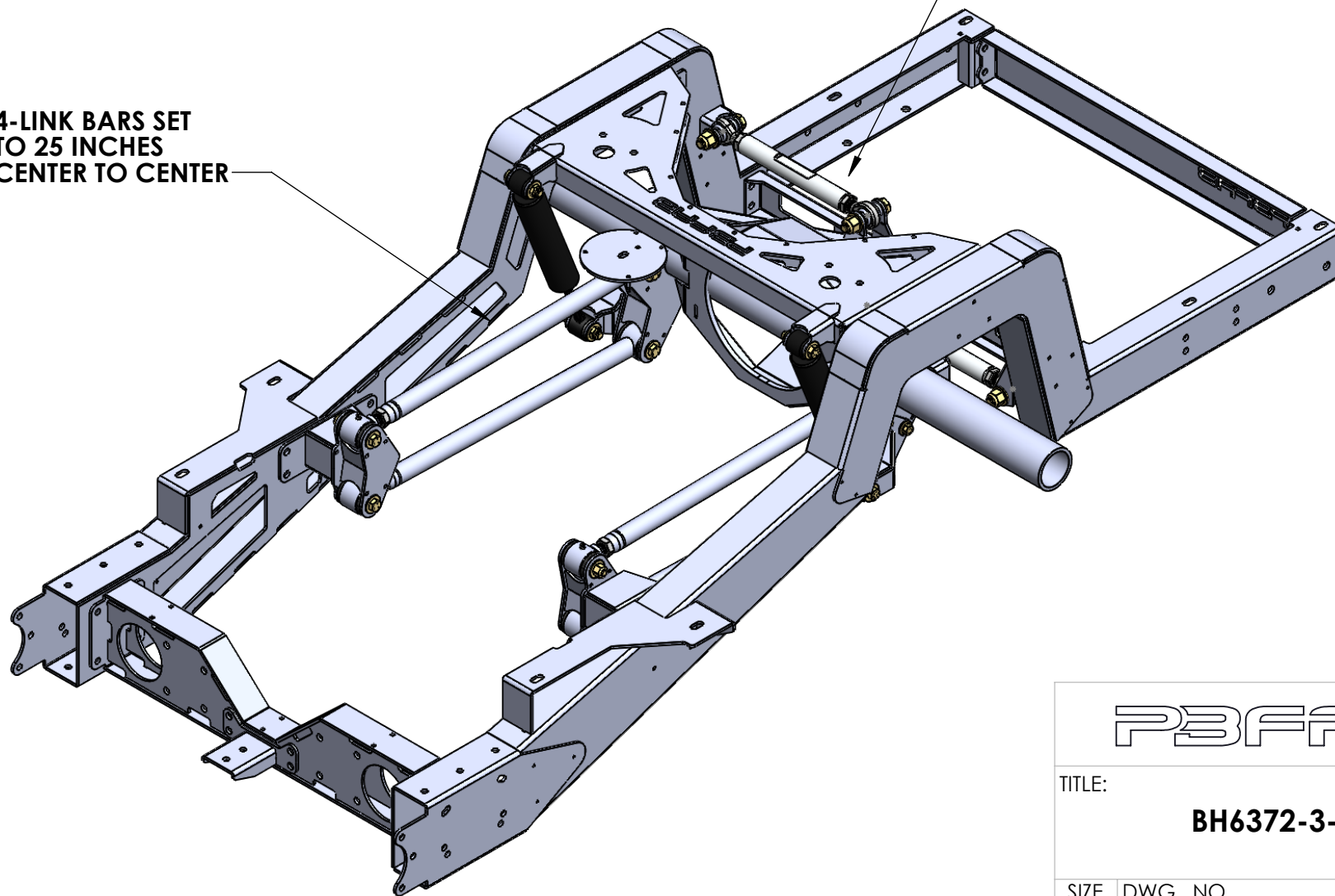
WHEN INSTALLING REAR DIFFERENTIAL AND AXLE BRACKETS, MAKE NOTE OF DETAILS LIISTED BELOW

B

B

**4-LINK BARS SET
TO 25 INCHES
CENTER TO CENTER**

**WATTS LINK BARS WILL NEED TO BE
PARALLEL TO THE GROUND WHEN
SETTING UP AXLE BRACKETS**



A

A

P3FAB

TITLE:

BH6372-3-A

SIZE

DWG. NO.

REV

A

2

1

2

1

DO NOT FULLY WELD AXLE BRACKETS UNTIL DRIVELINE ANGLES AND RIDE HEIGHT HAVE BEEN CONFIRMED

B

B

4-LINK/AIRBAG MOUNTING BRACKET

WATTS LINK MOUNTING BRACKET

90 DEGREES

A

A

P3FAB3

TITLE:

BH6372-3-A

SIZE

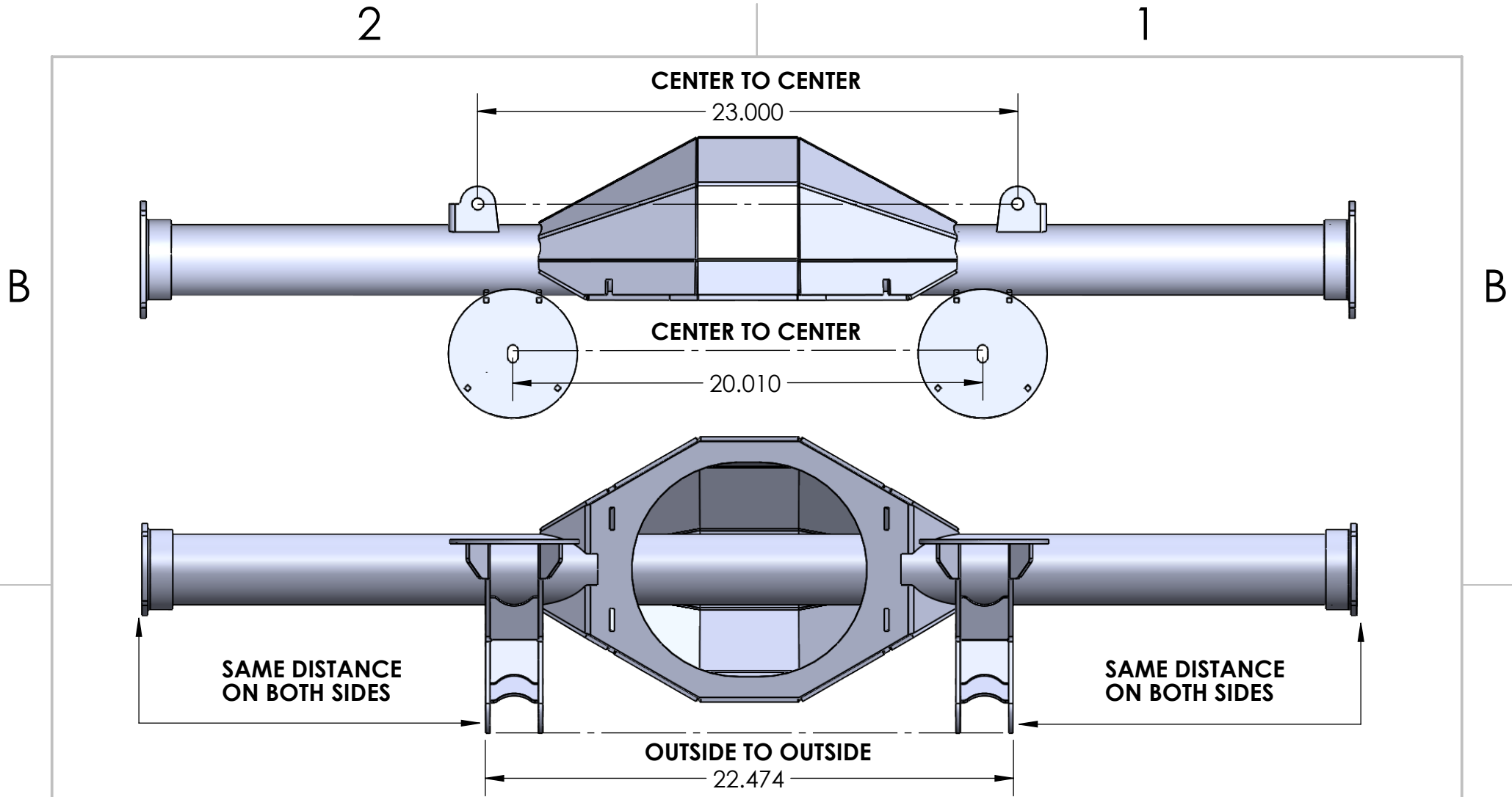
DWG. NO.

REV

A

2

1



-WATTS LINK MOUNTING TABS ARE CENTER TO CENTER ON THE MOUNTING HOLES; USE THE WATTS LINK MOUNTING BRACE TO SET DISTANCE ON HOUSING

-SET THE REAR DIFF PINION ANGLE TO ZERO IF RUNNING 2-PIECE DRIVESHAFT

-DO NOT FULLY WELD THE AXLE BRACKETS UNTIL DRIVELINE ANGLES AND RIDE HEIGHT HAVE BEEN CONFIRMED

P3FAB3

TITLE:

BH6372-3-A

SIZE

A

DWG. NO.

REV