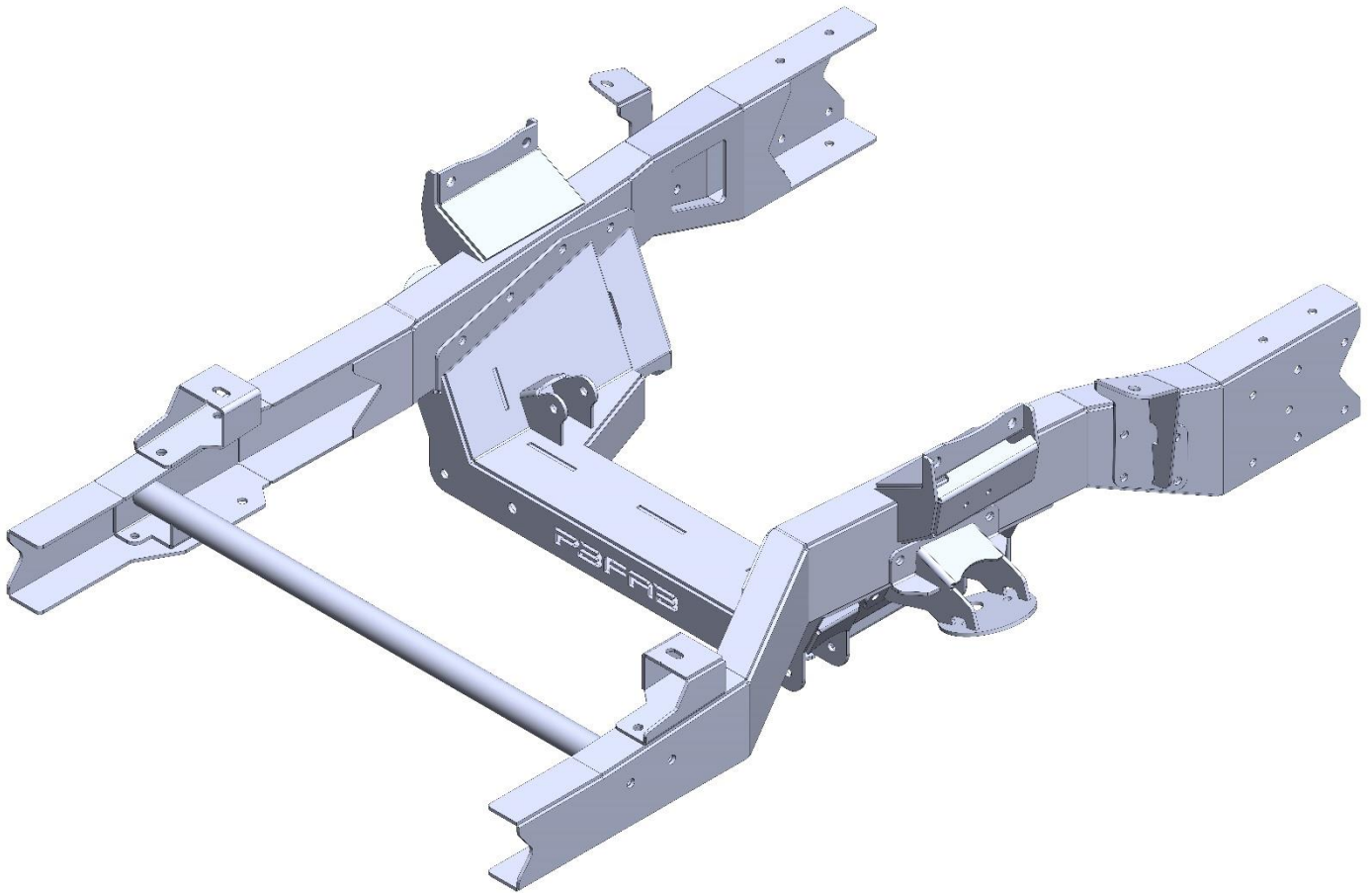


# **PBFAB DROPMEMBER V7**

## **LEVEL 3 AIRBAG**

### **INSTALLATION GUIDE**

#### **55-59 CHEVROLET/GMC**

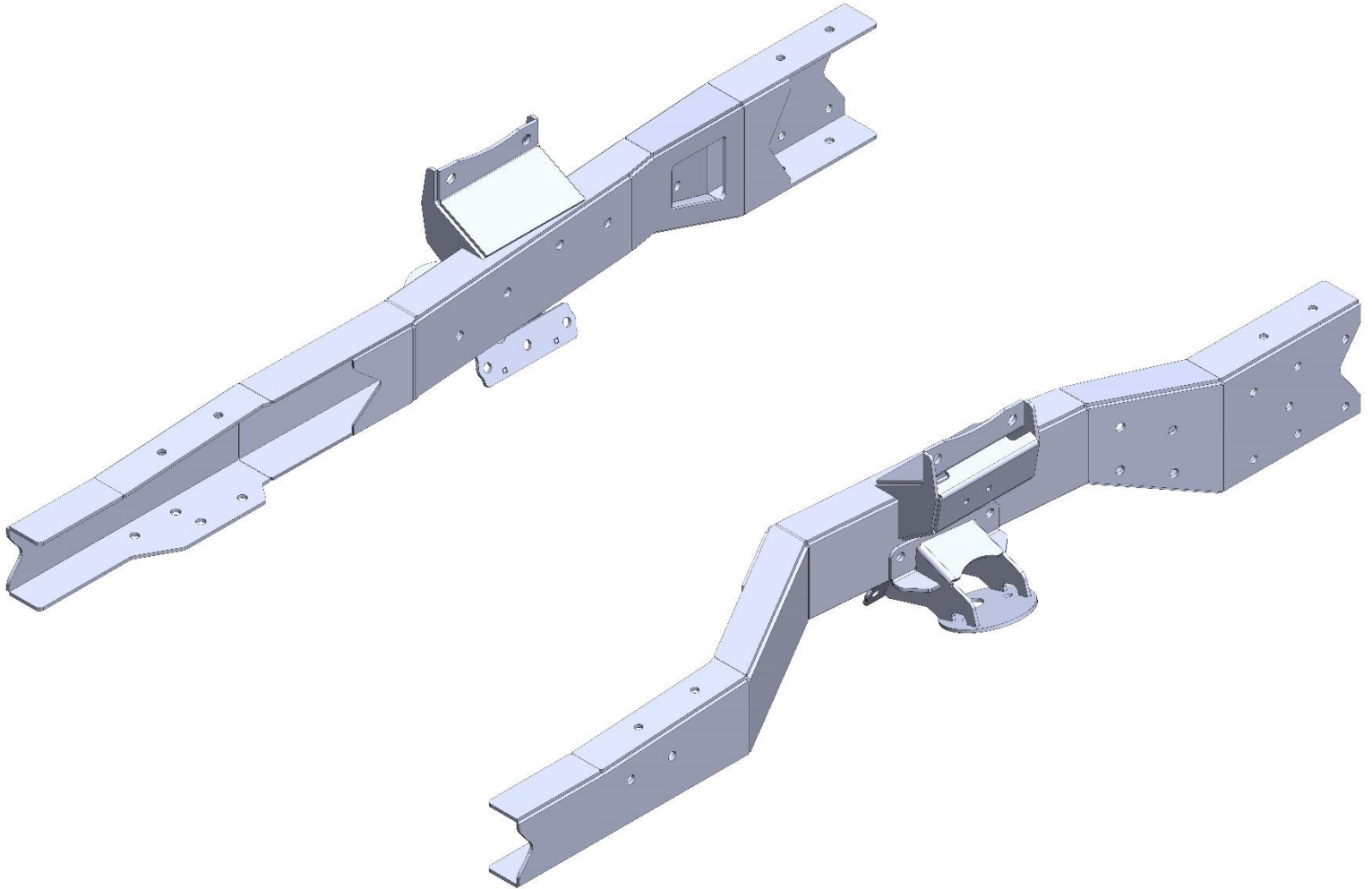


**MAY/2019**

## **SECTION 1: INDIVIDUAL PARTS IDENTIFICATION WITH HARWDARE DESCRIPTIONS**

**PART#** FRA5559-3-A

**DESCRIPTION:** FRAME RAIL ASSEMBLY 55-59 GM; LEVEL 3 AIRBAG



### **HARDWARE DESCRIPTION:**

7/16 X 1.25 GRADE 8 BOLT USS (QTY. 32)

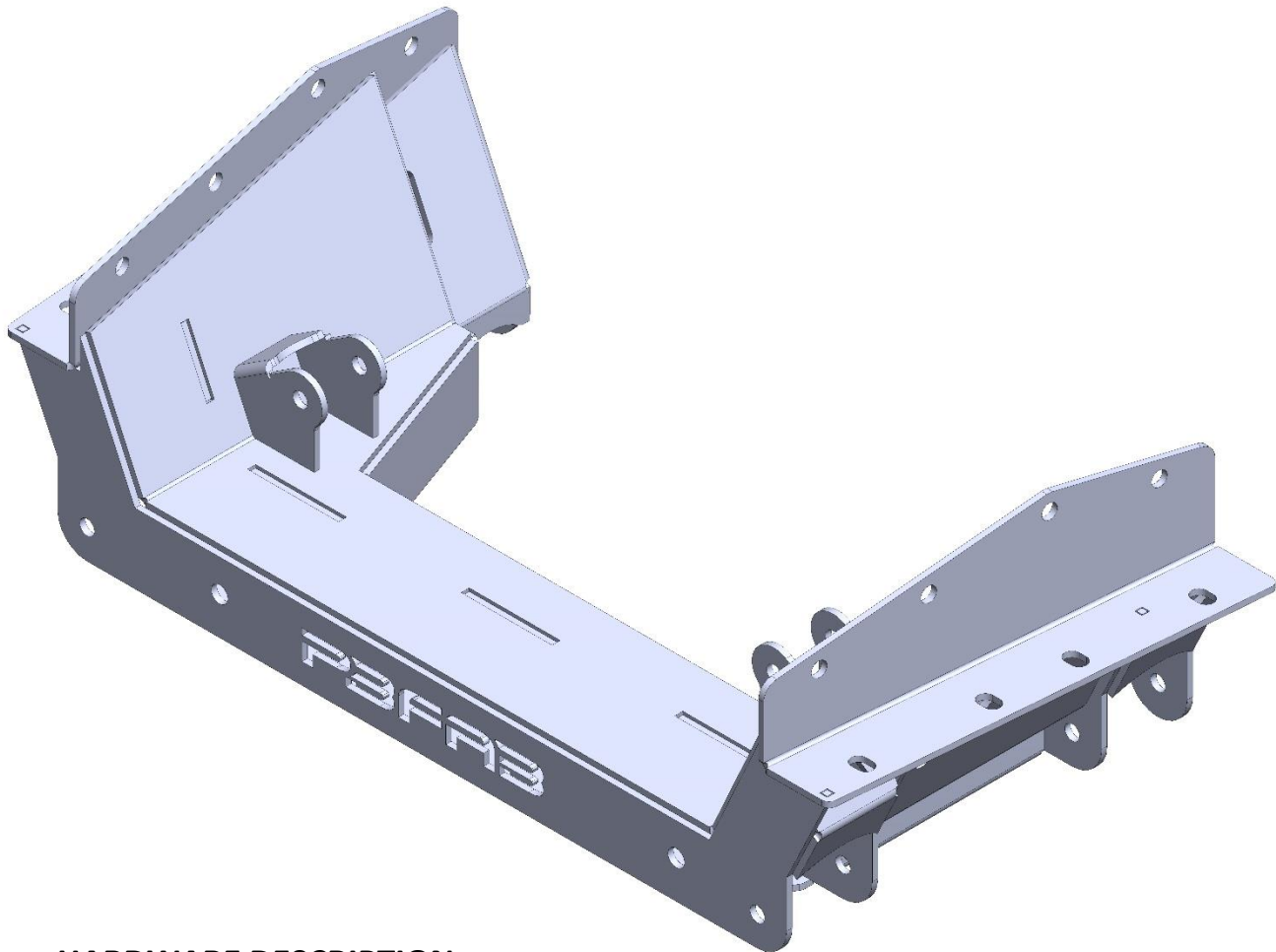
7/16 GRADE 8 NYLOC NUT (QTY. 22)

7/16 GRADE 8 LOCKWASHER USS (QTY. 10)

3/8 GRADE 8 FLAT WASHER USS (QTY. 54)

**PART# DM7-FRA-3-TAPERED**

**DESCRIPTION:** DROPMEMBER VERSION 7; LEVEL 3; TAPERED FRAME RAIL SPECIFIC



**HARDWARE DESCRIPTION:**

7/16 X 1.25 GRADE 8 BOLT USS (QTY. 16)

7/16 GRADE 8 LOCKWASHER (QTY. 16)

3/8 GRADE 8 FLAT WASHER (QTY. 16)

1/2 X 4 GRADE 8 BOLT USS (QTY.4) \*\*LOWER CONTROL ARM MOUNTING BOLTS\*\*

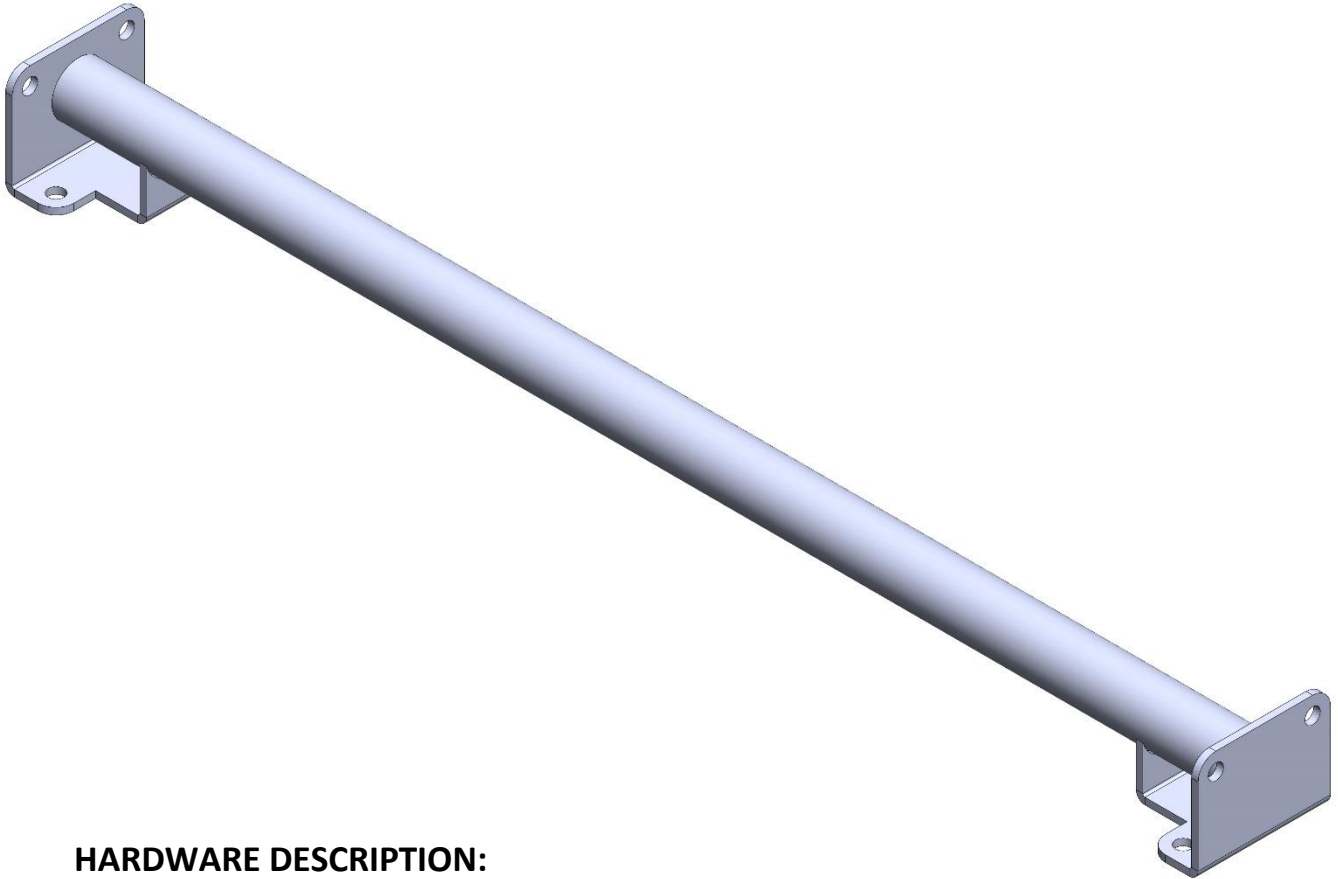
1/2 X 3.25 GRADE 8 BOLT USS (QTY. 2) \*\*MOTOR MOUNT MOUNTING BOLTS\*\*

1/2 GRADE 8 NYLOC NUT USS (QTY.6)

7/16 GRADE 8 FLAT WASHER USS (QTY.12)

**PART#** CSXM5559

**DESCRIPTION:** CORE SUPPORT CROSS MEMBER 55-59 SPECIFIC



**HARDWARE DESCRIPTION:**

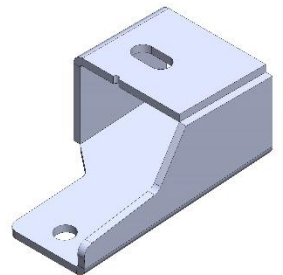
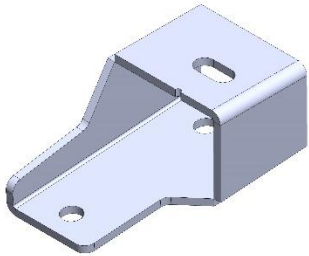
7/16 X 1.25 GRADE 8 BOLT USS (QTY. 8)

3/8 GRADE 8 FLAT WASHER USS (QTY. 16)

7/16 GRADE 8 NYLOC NUT USS (QTY. 8)

**PART# CSMB5557**

**DESCRIPTION:** CORE SUPPORT MOUNTING BRACKETS; 55-57 GM SPECIFIC (USED WITH 55-59 FRAME RAIL ASSEMBLIES)



**HARDWARE DESCRIPTION:**

7/16 X 1.25 GRADE 8 BOLT USS (QTY. 4)

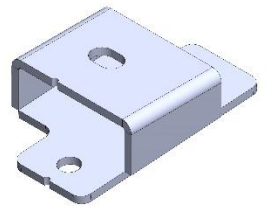
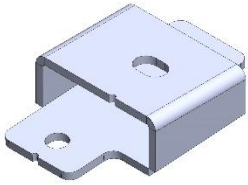
7/16 GRADE 8 NYLOC NUT (QTY. 4)

3/8 GRADE 8 FLAT WASHER USS (QTY. 8)

**\*\*\*USED WITH 55-57 FRONT SHEETMETAL\*\*\***

**PART# CSMB5859**

**DESCRIPTION:** CORE SUPPORT MOUNTING BRACKETS; 58-59 GM SPECIFIC (USED WITH 55-59 FRAME RAIL ASSEMBLIES)



**HARDWARE DESCRIPTION:**

7/16 X 1.25 GRADE 8 BOLT USS (QTY. 4)

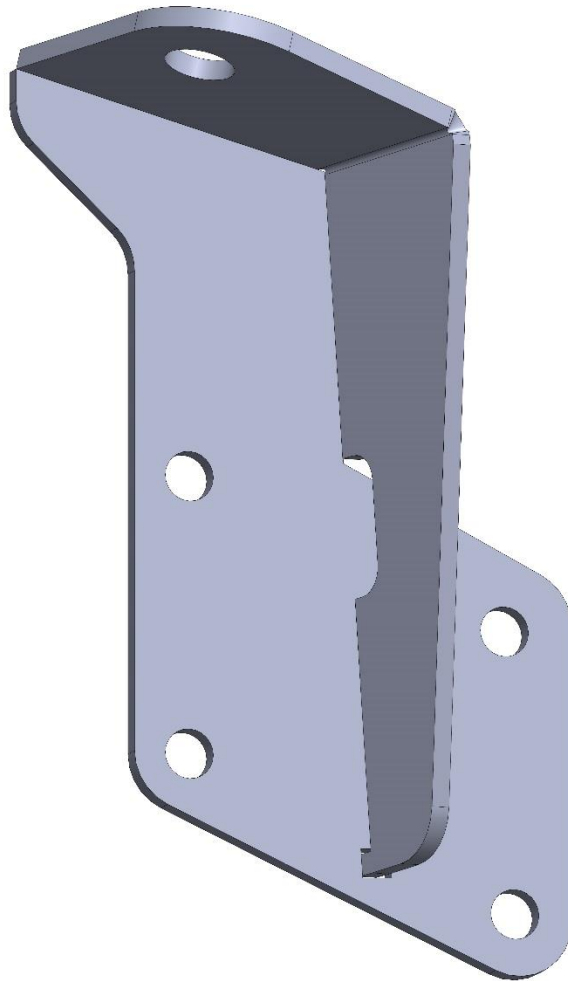
7/16 GRADE 8 NYLOC NUT (QTY. 4)

3/8 GRADE 8 FLAT WASHER USS (QTY. 8)

**\*\*\*USED WITH 58-59 FRONT SHEETMETAL\*\*\***

**PART#** SRB5559-3-DM7

**DESCRIPTION:** SHOCK RELOCATION BRACKET 55-59 FRAME RAIL ASSEMBLY  
SPECIFIC



**HARDWARE DESCRIPTION:**

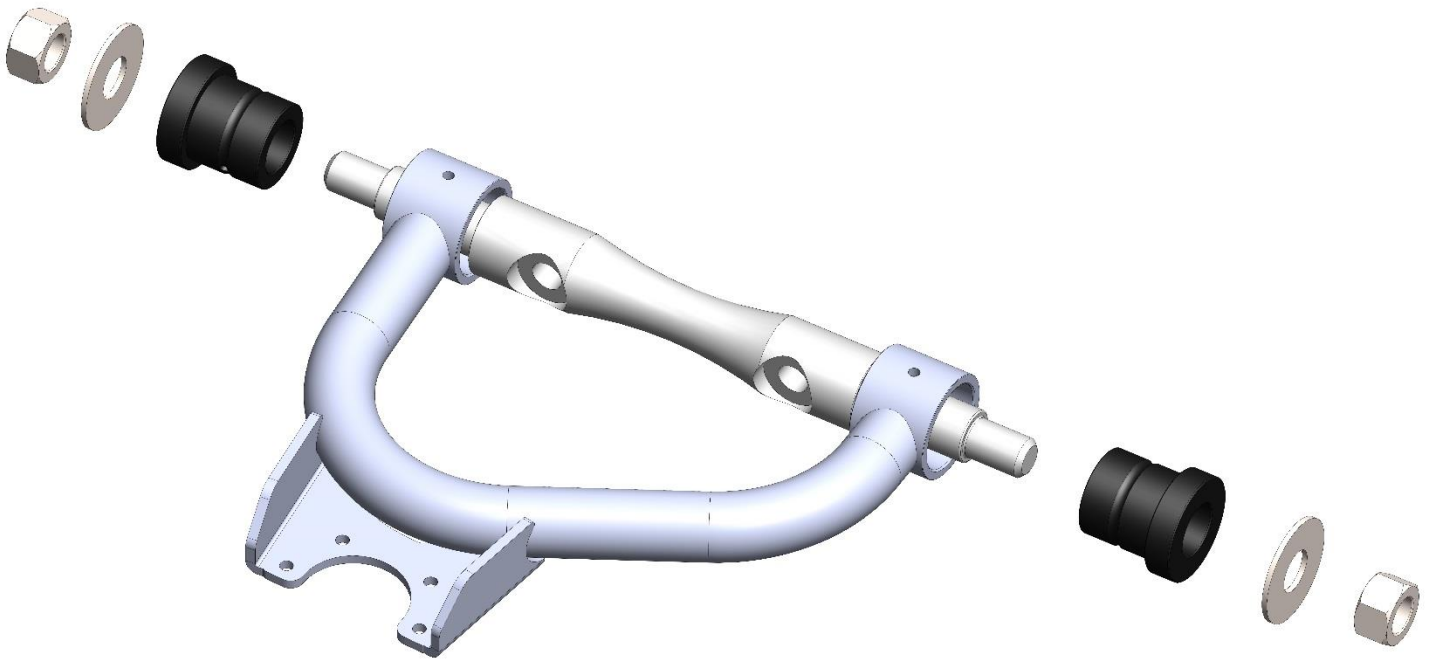
7/16 X 1.25 GRADE 8 BOLT USS (QTY. 8)

7/16 GRADE 8 LOCKWASHER (QTY. 8)

3/8 GRADE 8 FLAT WASHER (QTY. 8)

**PART#** UCA-1N-C10

**DESCRIPTION:** UPPER CONTROL ARM; 1 INCH NARROWED; C10 BALL JOINT CUP  
(ALSO COMPATIBLE WITH C30 BALL JOINT)



**HARDWARE DESCRIPTION:**

UPPER CONTROL ARM SHAFT (QTY. 2)

UPPER CONTROL ARM BUSHING (QTY. 4)

3/4 GRADE 5 FLAT WASHER (SILVER ZINC) (QTY. 4)

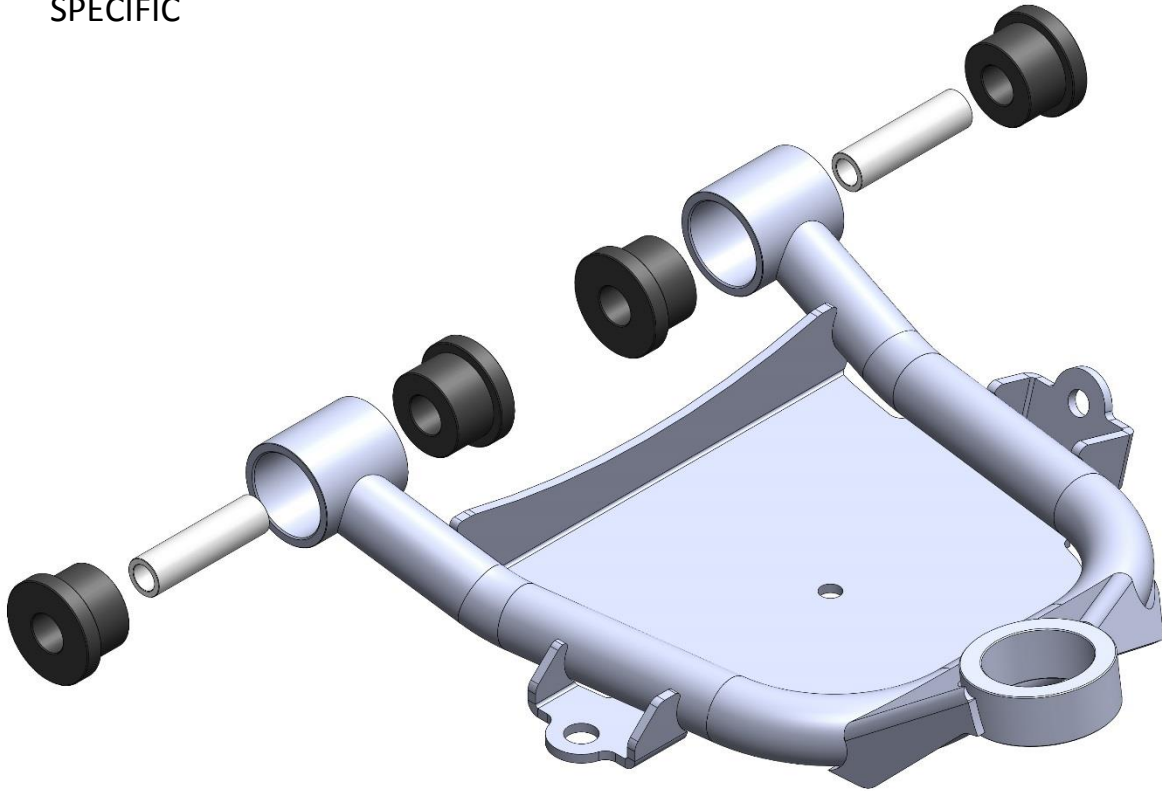
3/4 GRADE 5 NYLOC NUT SAE (SILVER ZINC) (QTY. 4)

GREASABLE ZERK FITTING (QTY. 4)



**PART#** LCA-1N-C10-DM7

**DESCRIPTION:** LOWER CONTROL ARM; 1 INCH NARROWED; C10 BALL JOINT SPECIFIC



**HARDWARE DESCRIPTION:**

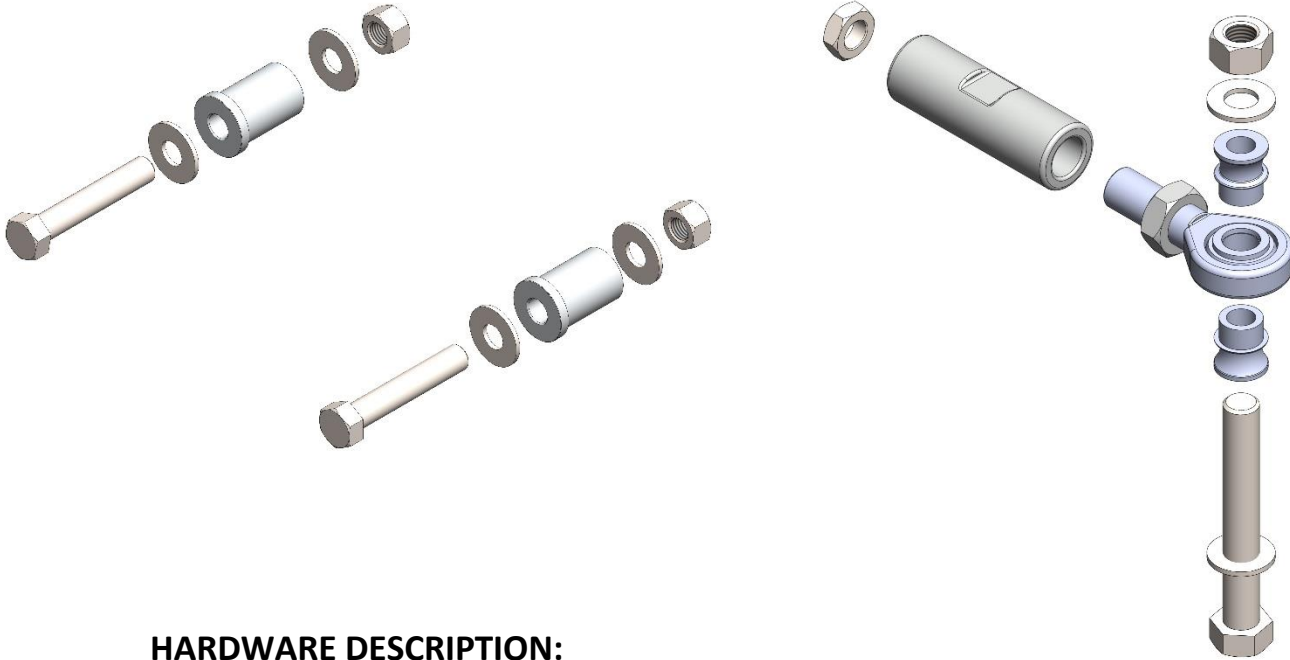
LOWER CONTROL ARM BUSHING (DMV6) (QTY. 8)

LOWER CONTROL ARM BUSHING CRUSH TUBE (DMV6) (QTY. 4)

GREASABLE ZERK FITTING (QTY. 4)

**PART# RPH**

**DESCRIPTION: RACK AND PINION HARWDARE KIT**



**HARDWARE DESCRIPTION:**

3/4 LH – 3/4 BORE ROD END WITH JAM NUT (QTY.2)

TIE ROD ADJUSTER SLEEVE (QTY.2)

9/16-18 RH JAM NUT (QTY.2)

BILLET RACK MOUNT BUSHING (QTY.2)

9/16 X 3.5 GRADE 8 BOLT USS (QTY.2)

9/16 GRADE 8 FLAT WASHER USS (QTY.4)

9/16 GRADE 8 NYLOC NUT USS (QTY.2)

5/8 X 4.5 GRADE 8 BOLT USS (QTY.2)

5/8 GRADE 8 NYLOC NUT USS (QTY.2)

5/8 GRADE 8 FLAT WASHER SAE (QTY.4)

3/4 TO 5/8 MISALIGNMENT SPACER (QTY.4)

**PART#** DOM2600-KIT

**DESCRIPTION:** AIRLIFT DOMINATOR 2600 KIT



**HARDWARE DESCRIPTION:**

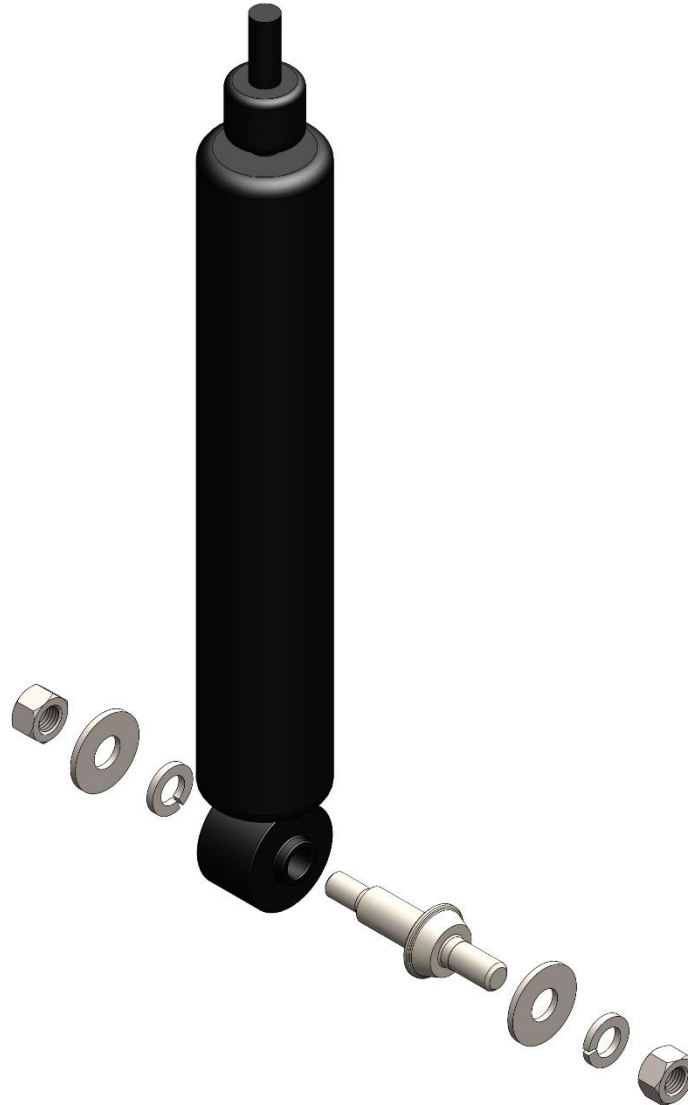
3/8 X .75 GRADE 8 BOLT USS (QTY. 4)

3/8 GRADE 8 FLAT WASHER USS (QTY. 4)

3/8 GRADE 8 LOCK WASHER USS (QTY. 4)

**PART# 1924202-KIT**

**DESCRIPTION: PB SHOCK KIT**



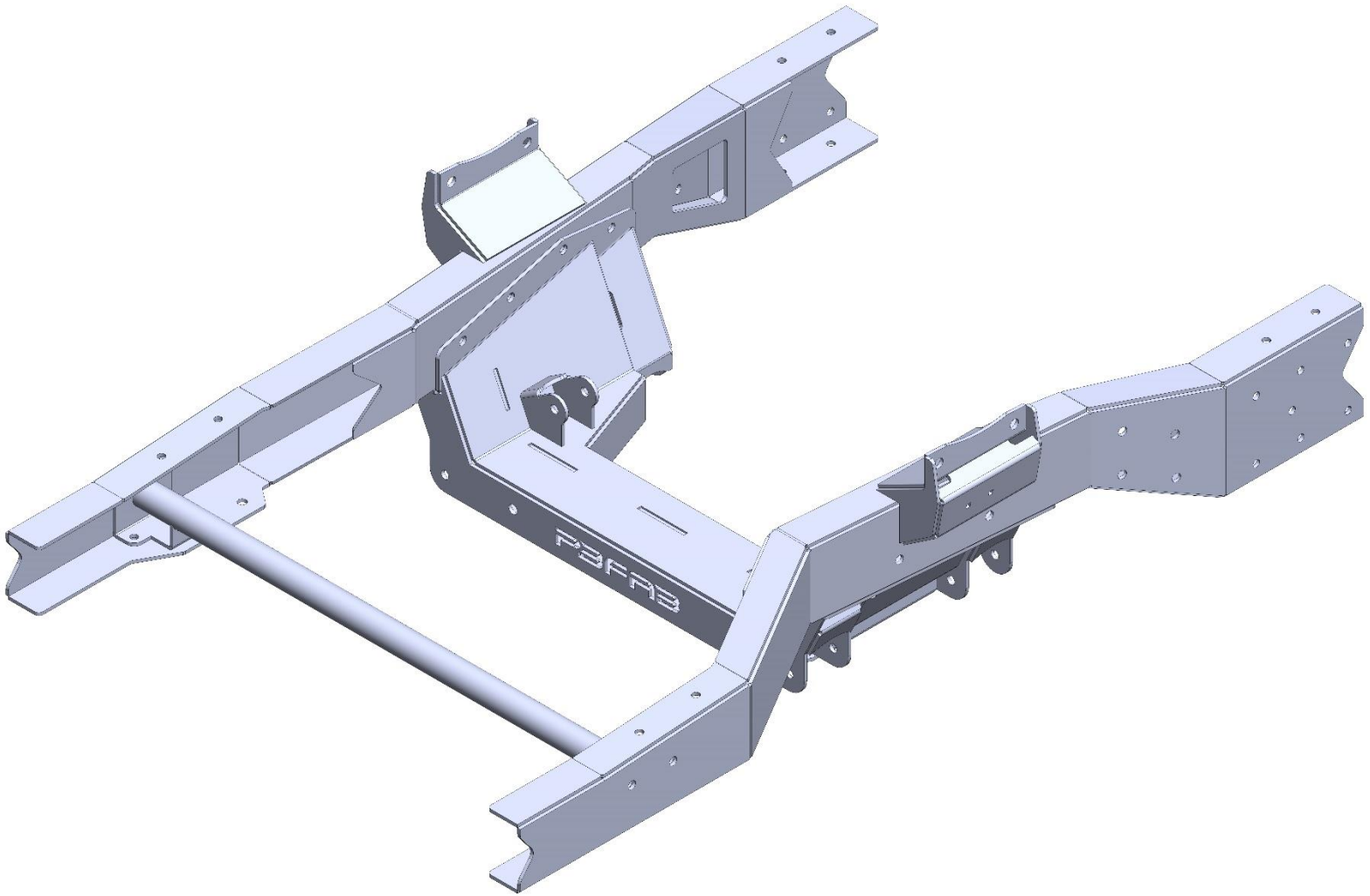
**HARDWARE DESCRIPTION:**

KYB SHOCK PART# 344202 (QTY. 2)

SHOCK STUD KIT (QTY. 2)

## **-FRONT CLIP ASSEMBLY**

-ASSEMBLING FRONT CLIP BEFORE ATTACHING TO FACTORY FRAME RAILS IS  
RECOMMENDED FOR EASE OF INSTALLATION



-ASSEMBLE FABRICATED FRAME RAILS TO DROPMEMBER USING SUPPLIED GRADE 8  
HARDWARE

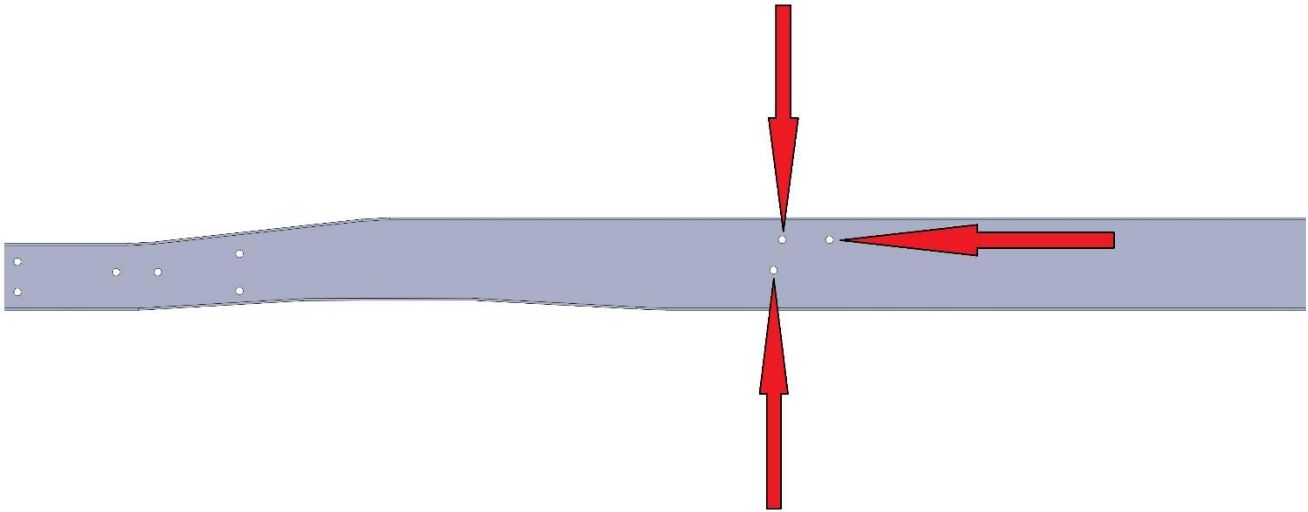
-INSTALL FRONT CORE SUPPORT CROSSMEMBER USING SUPPLIED GRADE 8  
HARDWARE

**\*\*\*DO NOT FULLY TIGHTEN AT THIS TIME\*\*\***

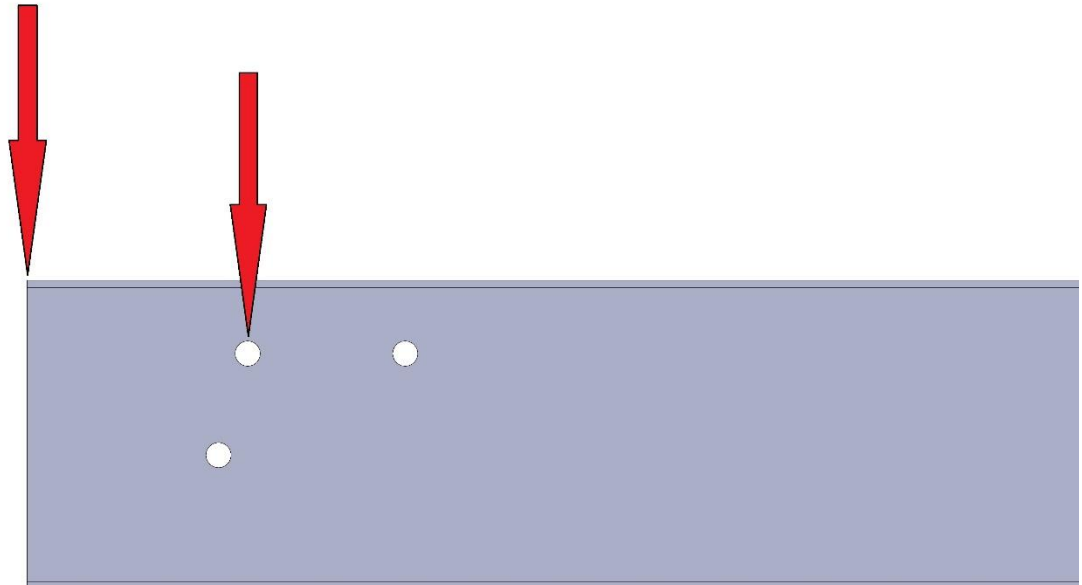
## **-PREP FACTORY FRAME RAILS FOR FRONT CLIP INSTALLATION**

-REMOVE FACTORY FRONT LEAF SPRING HANGERS

-FACTORY FRONT LEAF SPRING HANGER MOUNTING HOLES WILL BE USED FOR CUT LINE REFERENCE AND FRAME RAIL ASSEMBLY MOUNTING ALIGNMENT

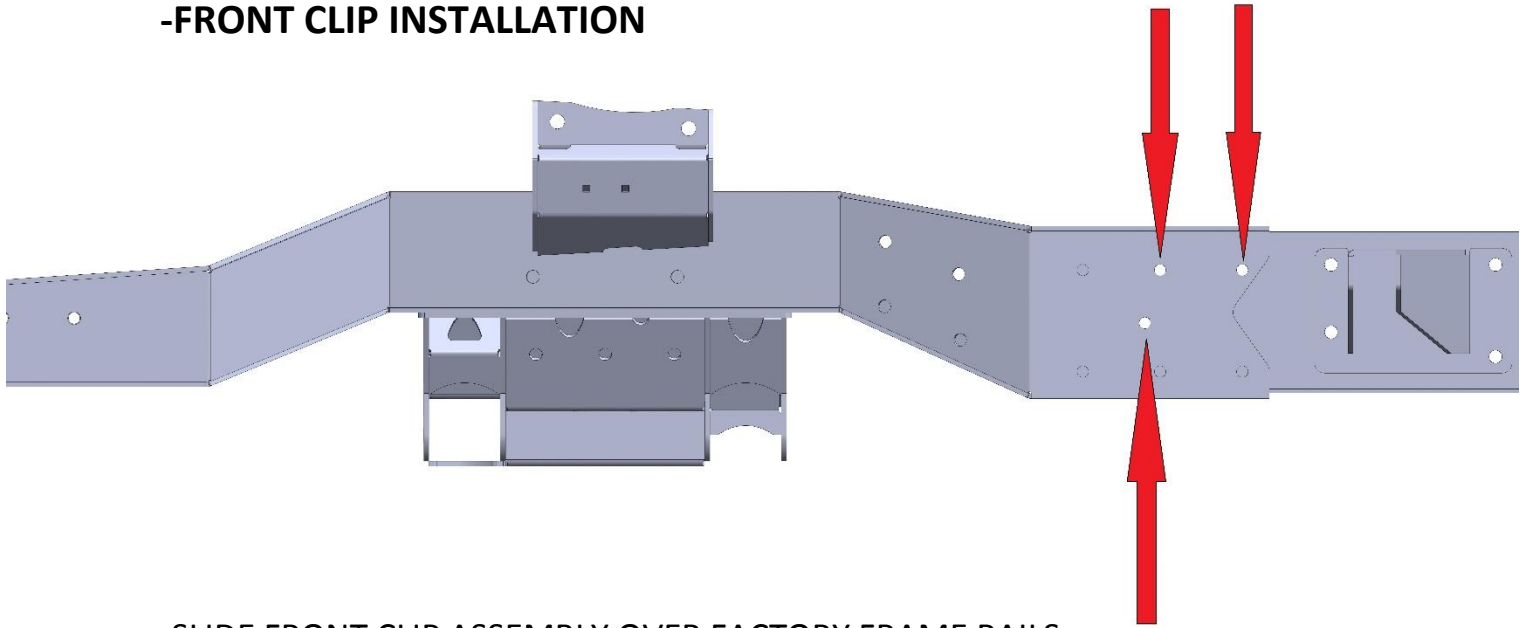


**USE FACTORY RIVET HOLE CENTERLINE TO MARK FOR CUTTING OF FACTORY FRAME RAIL**



**\*\*\*CUT FACTORY FRAME RAILS OFF AT 4 3/8 INCHES FORWARD FROM CENTER OF FACTORY RIVET HOLE REFERENCED IN IMAGE ABOVE\*\*\***

## -FRONT CLIP INSTALLATION



-SLIDE FRONT CLIP ASSEMBLY OVER FACTORY FRAME RAILS

-IT MAY BE NECESSARY TO TRIM THE WIDTH OF THE FACTORY FRAME FOR THE FRONT CLIP TO SLIDE OVER IT

-ALIGN FACTORY LEAF SPRING HANGER MOUNTING HOLES WITH MOUNTING HOLES IN FABRICATED FRAME RAIL ASSEMBLIES **\*\*\*SEE ABOVE IMAGE FOR REFERENCE\*\*\***

-CLAMP FABRICATED FRAME RAILS TO FACTORY FRAME SO THAT TOP AND SIDES ARE FLUSH

-ENSURE THAT FRONT CLIP IS LEVEL AND SQUARE TO FACTORY CHASSIS

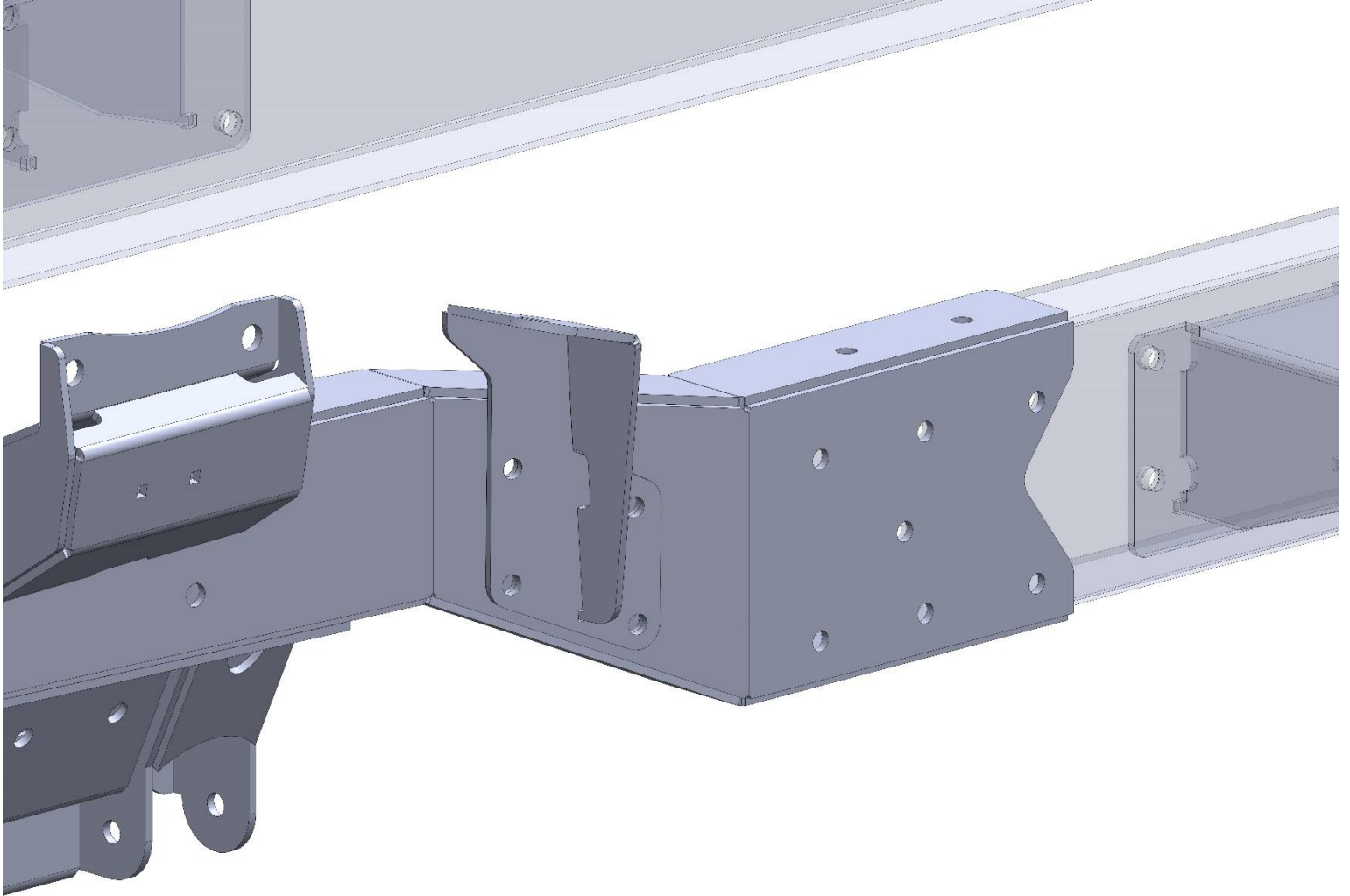
-MARK AND DRILL FRAME RAIL ASSEMBLY MOUNTING HOLES USING 7/16 DRILL BIT

-INSTALL SUPPLIED GRADE 8 HARDWARE AND TORQUE TO 65 FT-LBS; INCLUDING ALL FRONT HARDWARE LEFT LOOSE DURING FRONT CLIP ASSEMBLY

**\*\*\*PERIODICALLY CHECK TO ENSURE SQUARENESS AND LEVEL WHILE TIGHTENING HARDWARE\*\*\***

## SHOCK MOUNT INSTALLATION

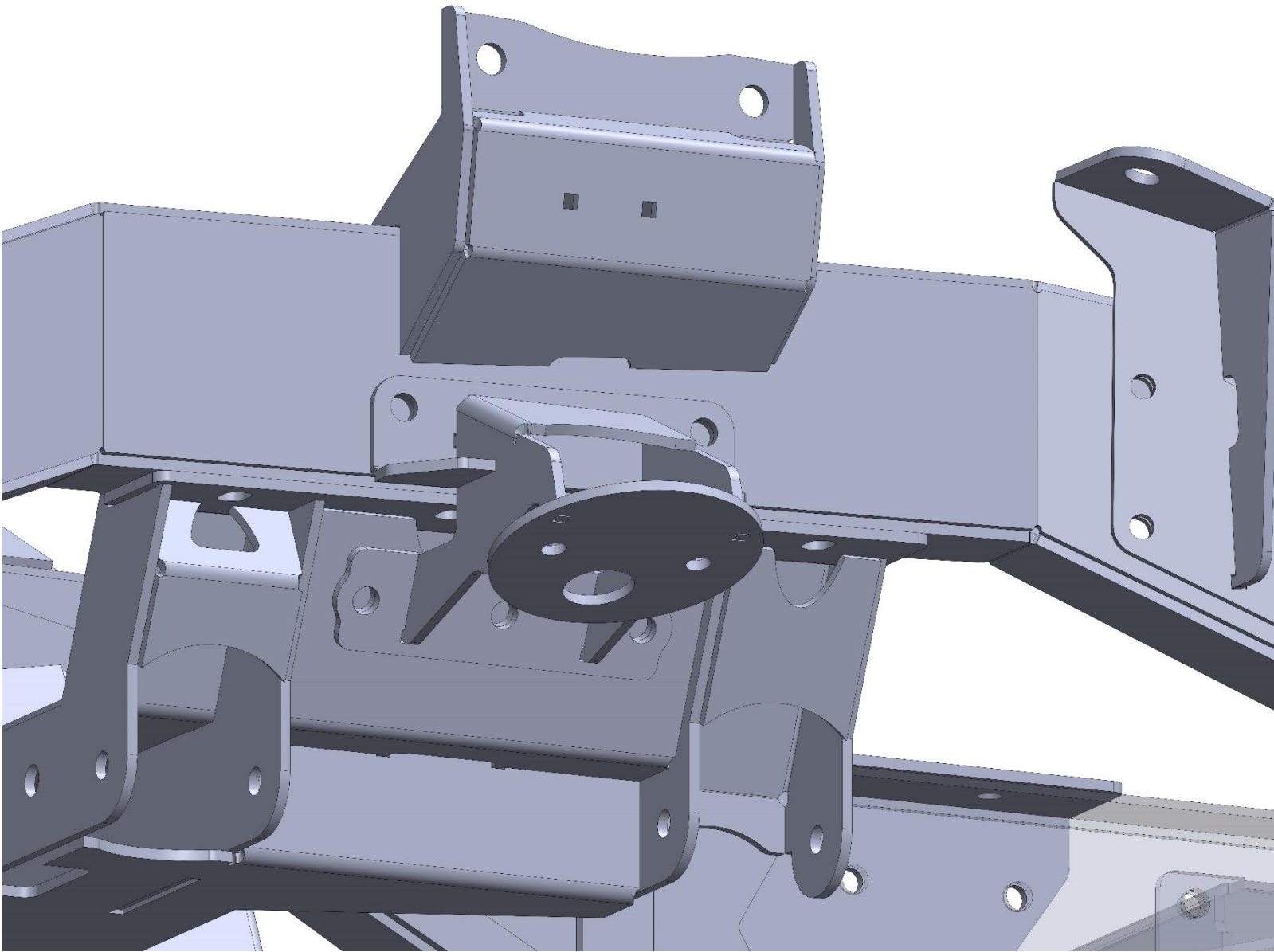
INSTALL UPPER SHOCK MOUNTING BRACKET USING SUPPLIED GRADE 8  
HARDWARE (TORQUE TO 65 FT LBS)





## UPPER BAG MOUNT INSTALLATION

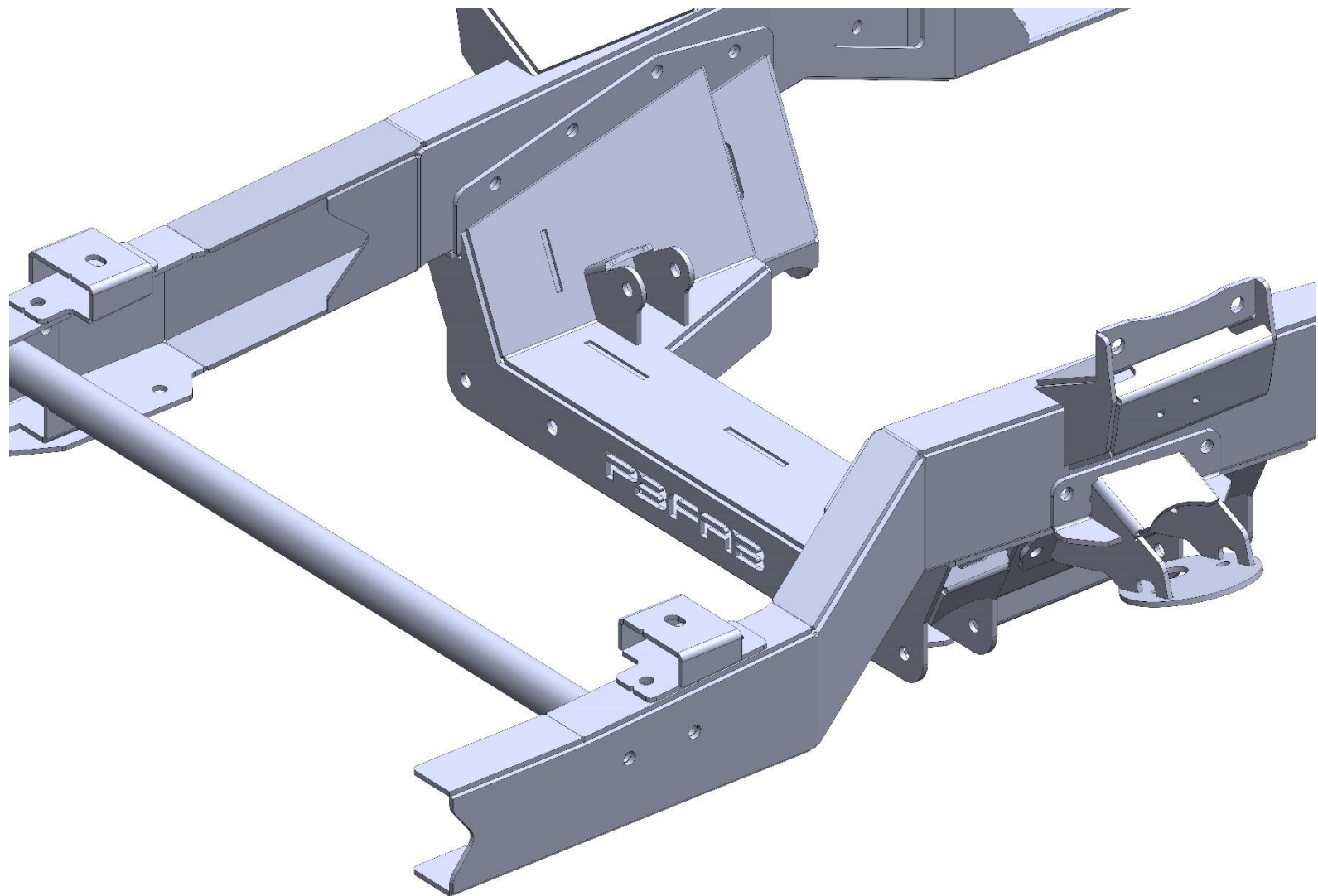
INSTALL UPPER BAG MOUNTING BRACKET USING SUPPLIED GRADE 8 HARDWARE  
(TORQUE TO 65 FT LBS)



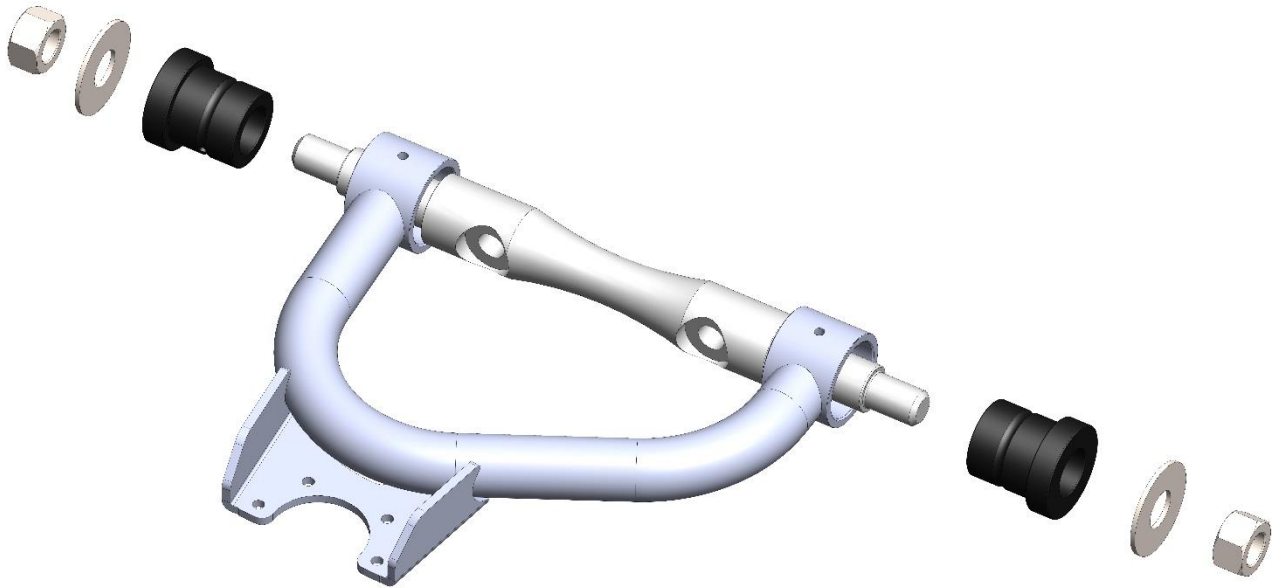
## FRONT CORE SUPPORT MOUNTING BRACKET INSTALLATION

INSTALL FRONT CORE SUPPORT MOUNTING BRACKETS USING SUPPLIED GRADE 8 HARDWARE (TORQUE TO 65 FT. LBS)

**\*\*\*NOTE: 55-57 AND 58-59 CORE SUPPORT MOUNTING BRACKETS ARE DIFFERENT\*\*\***



## **-UPPER CONTROL ARM INSTALLATION**



-USE DIAGRAM TO INSTALL DELRIN BUSHINGS IN UPPER CONTROL ARM.

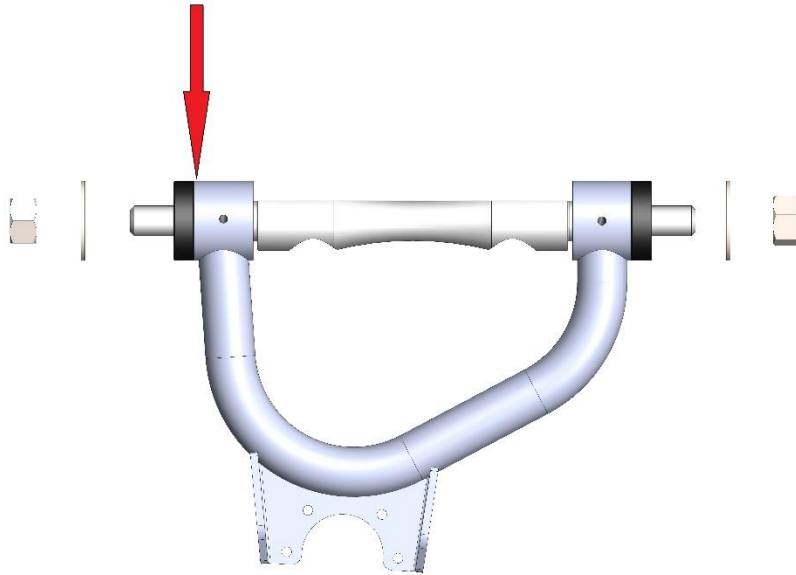
\*\*\*DRIVER SIDE ARM SHOWN IN IMAGE\*\*\*

-USE A TEFLON BASED HI-TEMP SYNTHETIC GREASE TO LUBRICATE BUSHINGS FOR INSTALLATION.

**\*\*\*DO NOT YET TIGHTEN ANY HARDWARE\*\*\***

**\*\*\*CONTINUED ON NEXT PAGE\*\*\***

**The upper control arm bushing must be fully seated against the machined surface of the pivot tube BEFORE tightening the nyloc nut. DO NOT use the washer and nyloc nut to press the bushing into place. This can bind and break the bushing.**

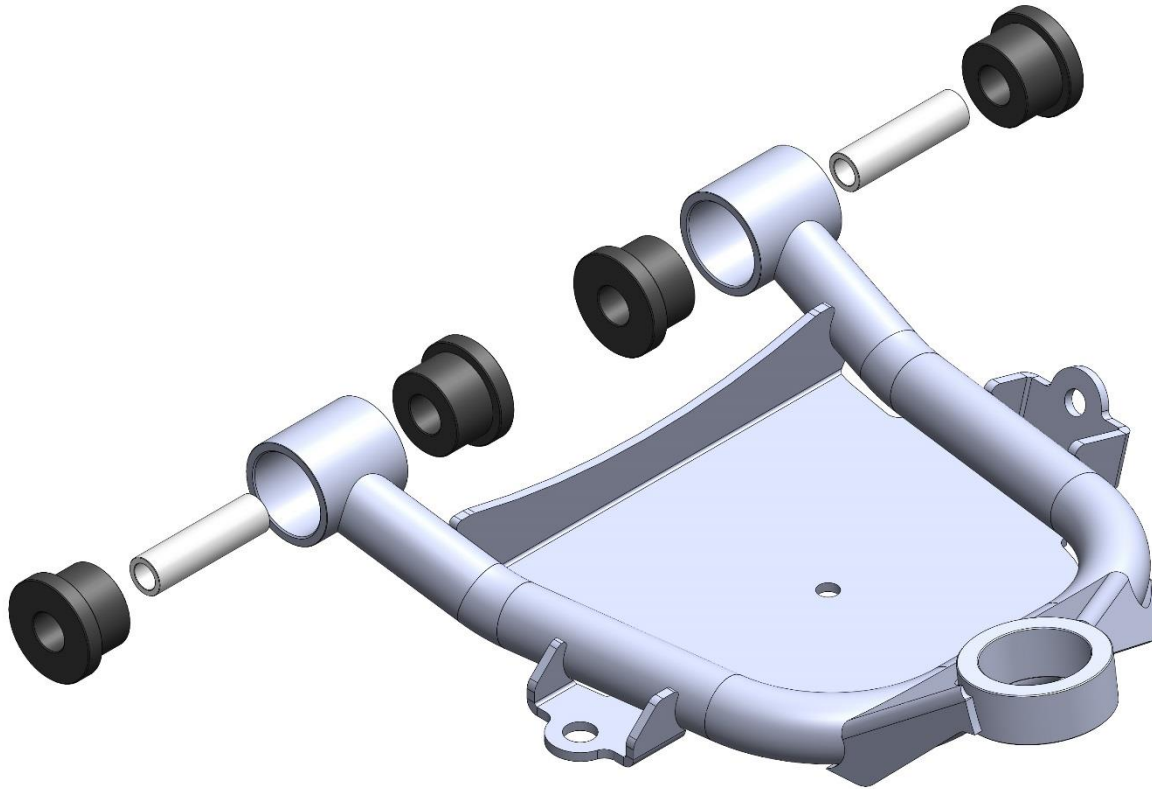


**Once the bushing is fully seated, tighten the nyloc nut until the washer bottoms out against the machined shoulder on the cross-shaft. Then tighten 1/4 turn.**

**(DRIVER SIDE CONTROL ARM SHOWN)**

- FOLLOW DIAGRAM CLOSELY TO ENSURE PROPER BUSHING INSTALLATION. FAILURE TO FOLLOW RECOMMENDATIONS WILL VOID ANY WARRANTY.
- IF UPPER CONTROL ARM BUSHINGS SEEM EXTREMELY TIGHT; TOSS THEM IN THE FREEZER FOR APPROX 10 MINUTES AND RE-TRY
- USE SUPPLIED GRADE 8 HARDWARE TO ATTACH UPPER CONTROL ARMS SHAFTS TO UPPER CONTROL ARM MOUNTING BRACKET (TORQU TO 70 FT LBS)
- UPPER CONTROL ARM SHAFT WILL MOST LIKELY NEED TO BE SHIMMED FOR PROPER ALIGNMENT

## **-LOWER CONTROL ARM INSTALLATION**

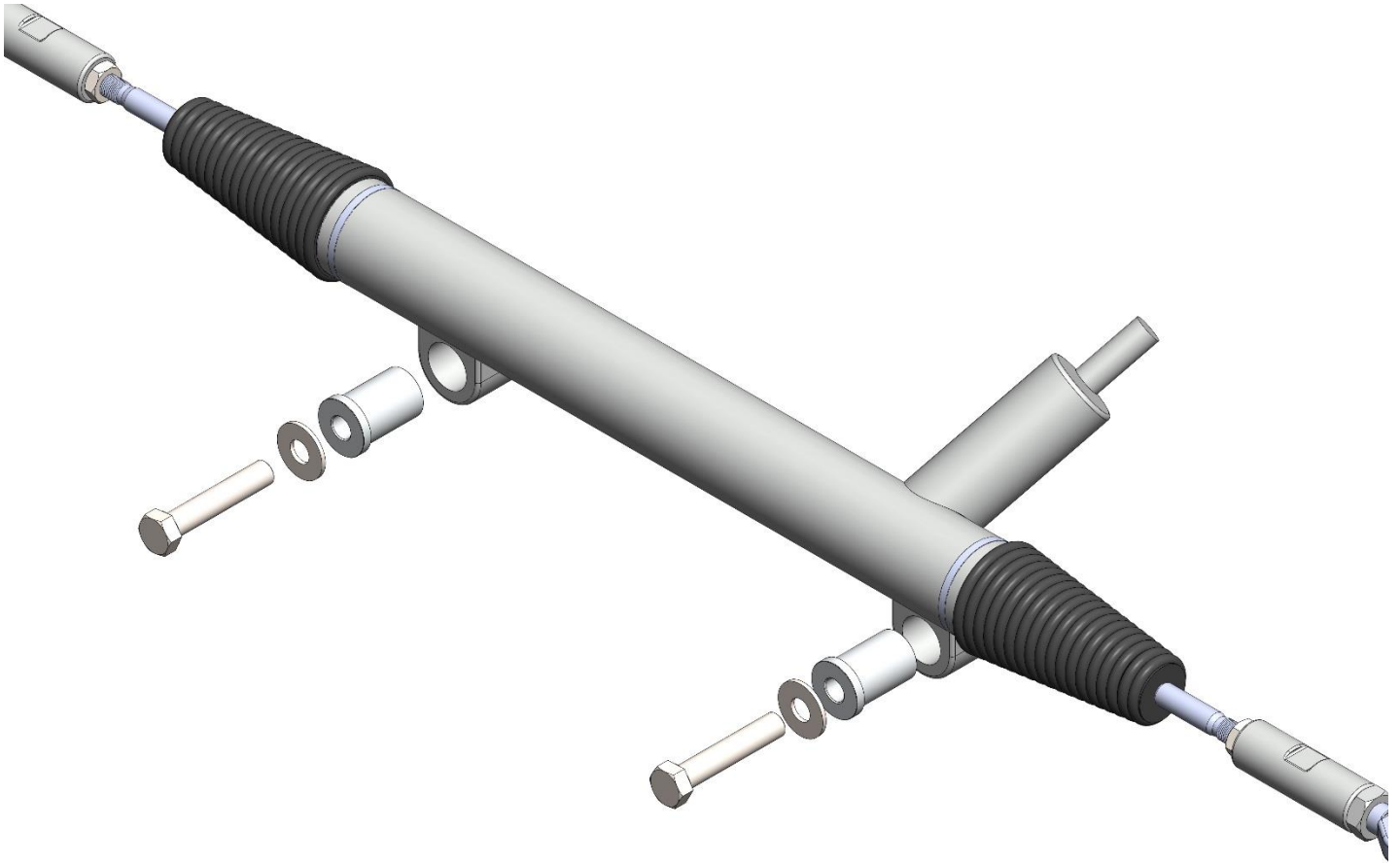


-USE DIAGRAM TO INSTALL DELRIN BUSHINGS AND DELRIN BUSHING CRUSH TUBES IN LOWER CONTROL ARM. \*\*\*DRIVER SIDE ARM SHOWN IN IMAGE\*\*\*

-USE A TEFLON BASED HI-TEMP SYNTHETIC GREASE TO LUBRICATE BUSHINGS FOR INSTALLATION

- USE SUPPLIED GRADE 8 MOUNTING HARDWARE TO ATTACH LOWER CONTROL ARMS TO DROPMEMBER ASSEMBLY (TORQUE TO 70 FT LBS)

## **-RACK AND PINION INSTALLATION**



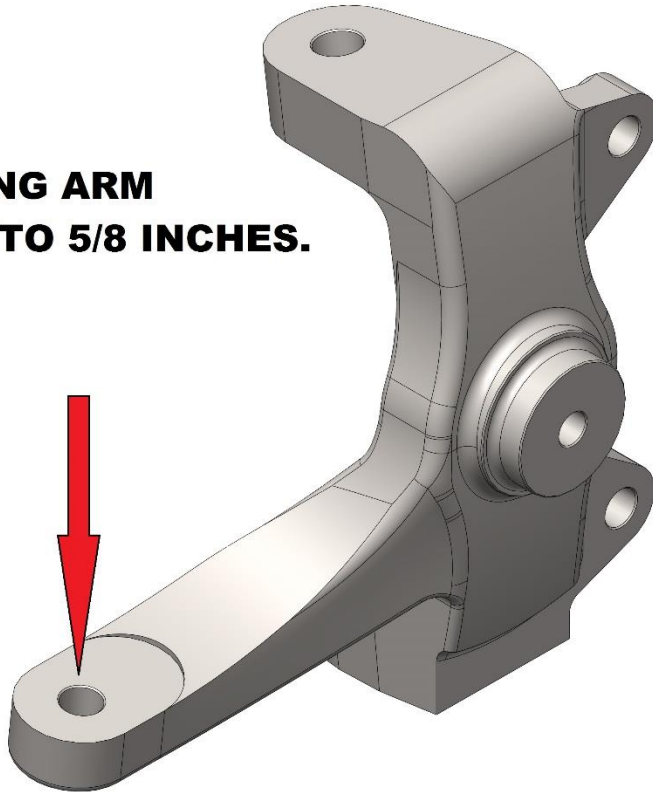
**-USE SUPPLIED STEPPED ALUMINUM BUSHINGS AND 9/16 X 3.5" GRADE 8 BOLTS WITH FLAT WASHERS AND NYLOC NUTS.**

**-IF THE RACK AND PINION HAS RUBBER MOUNTING BUSHINGS PRESSED INTO THE BODY, REMOVE THEM AND USE THE SUPPLIED ALUMINUM BUSHINGS.**

**\*\*\*CONTINUED ON NEXT PAGE\*\*\***

**-RACK AND PINION INSTALLATION CONTINUED**

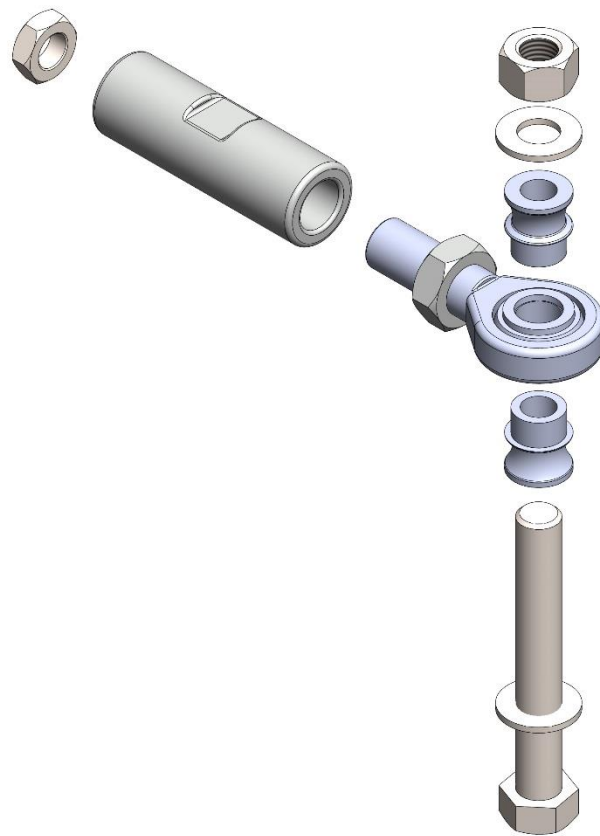
**SPINDLE'S STEERING ARM  
MUST BE DRILLED TO 5/8 INCHES.**



**-THE SPINDLE STEERING ARM WILL NEED TO BE DRILLED OR REAMED TO 5/8" FOR  
THE TIE ROD BOLT TO BE INSTALLED**

**\*\*\*CONTINUED ON NEXT PAGE\*\*\***

**-RACK AND PINION INSTALLATION CONTINUED**

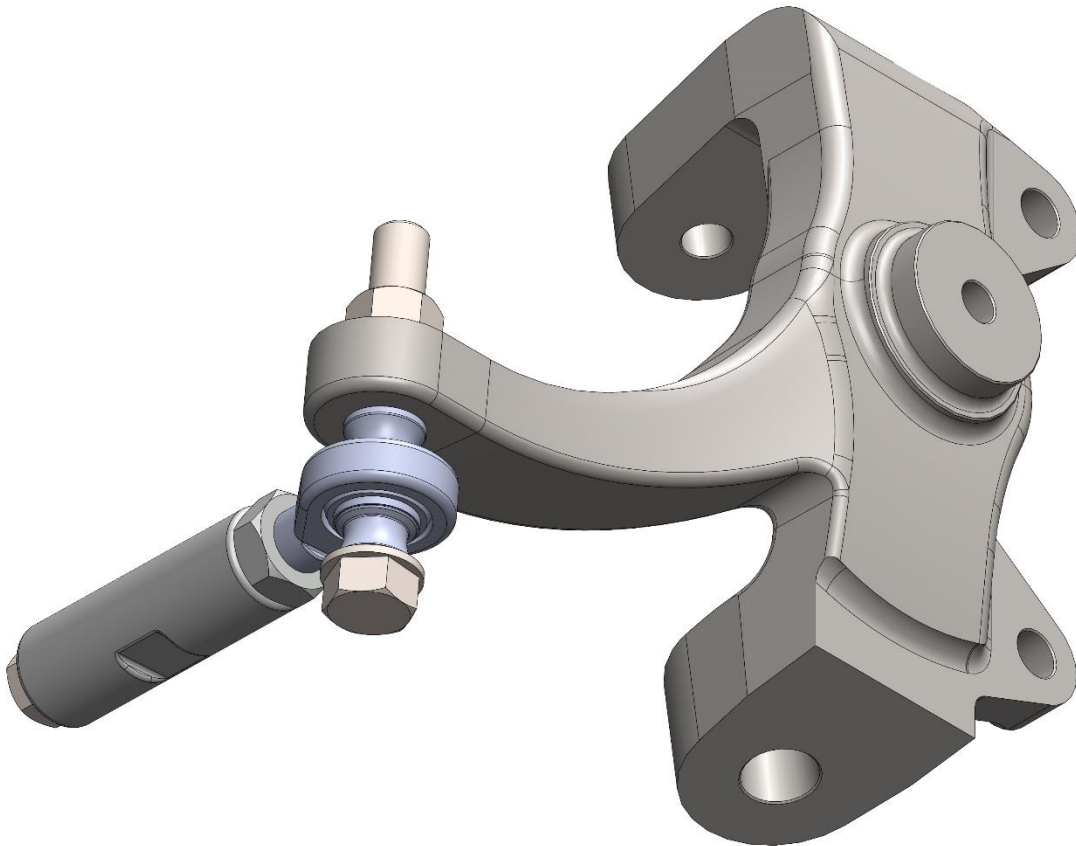


**-TIE ROD END HARDWARE EXPLODED VIEW**



**\*\*\*CONTINUED ON NEXT PAGE\*\*\***

**-RACK AND PINION INSTALLATION CONTINUED**



-TIE ROD ASSEMBLY WILL MOUNT TO BOTTOM SIDE OF SPINDLE'S STEERING ARM.

-IT MAY BE NECESSARY TO TRIM THE THREADED END OF THE RACK AND PINION TIE ROD TO ACHIEVE PROPER ALIGNMENT

-TO CONFIRM IF TRIMMING OF THE RACK IS NECESSARY, MOCK UP TIE ROD END TO SPINDLE

-IF TRIMMING IS IN FACT NECESSARY, TRIM 1/2 INCHES PER SIDE AT A TIME. IT'S BETTER TO REMOVE TOO LITTLE RATHER THAN TOO MUCH MATERIAL