

2

1

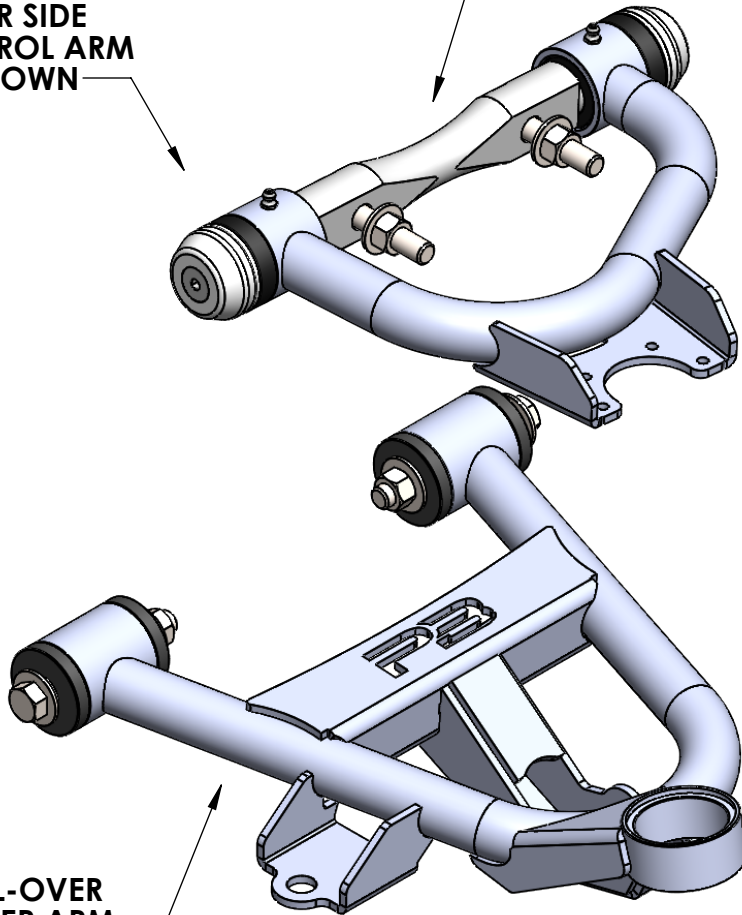
UPPER AND LOWER CONTROL ARM ASSEMBLY GUIDE (DROPMEMBER SPECIFIC)
*****PLEASE FOLLOW STEPS CLOSELY TO ENSURE PROPER INSTALLATION*****

B

B

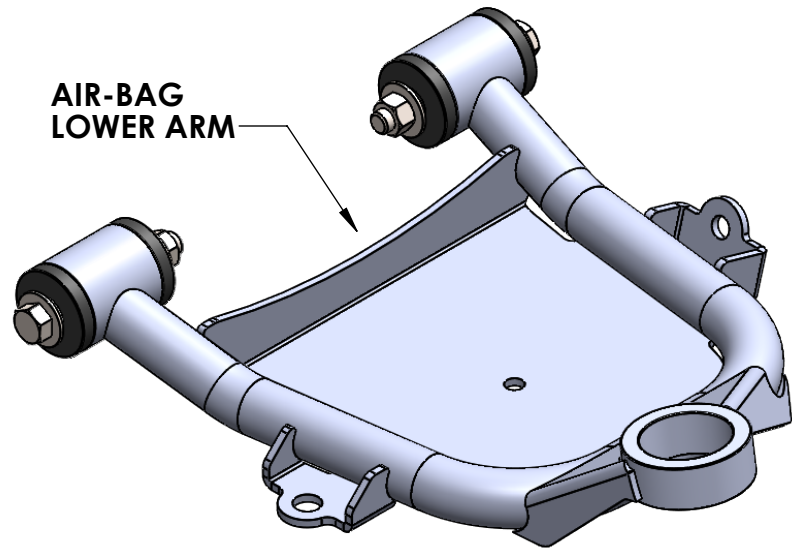
DRIVER SIDE
CONTROL ARM
SET SHOWN

SHAFT ORIENTATION MAY HAVE
FLAT MOUNTING SURFACE ROTATED 180° FROM
IMAGE DEPENDING ON FRAME
MOUNTING BRACKET CONFIGURATION



COIL-OVER
LOWER ARM

AIR-BAG
LOWER ARM



A

A

P3FAB

TITLE: **UPPER AND LOWER CONTROL
ARM INSTALL GUIDE
(DROPMEMBER SPECIFIC)**

SIZE	DWG. NO.	REV
A		

2

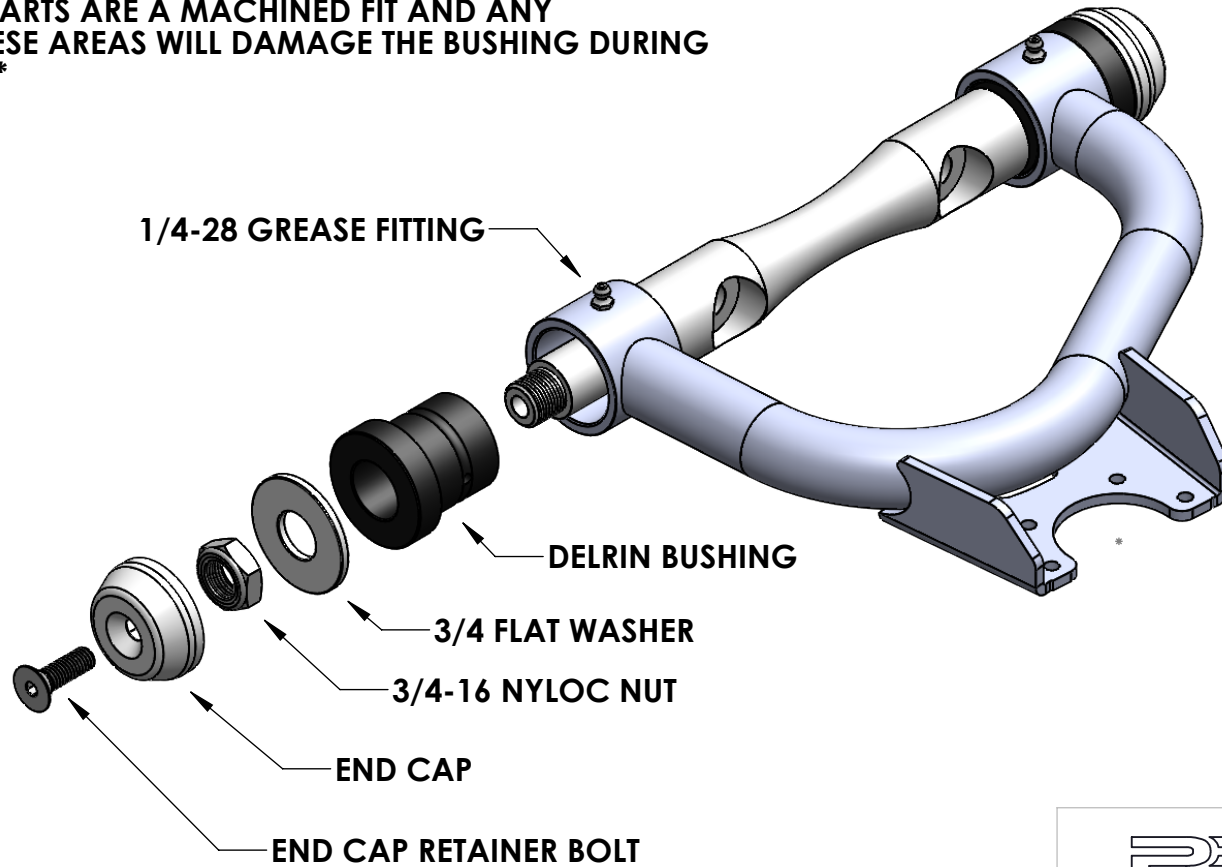
1

2

1

UPPER CONTROL ARM ASSEMBLY EXPLODED VIEW (DRIVER SIDE ARM SHOWN)

*****DO NOT PAINT OR POWDERCOAT SURFACES WHERE BUSHING RIDES INSIDE CONTROL ARM PIVOT TUBE OR ON CROSS-SHAFT; PARTS ARE A MACHINED FIT AND ANY COATING IN THESE AREAS WILL DAMAGE THE BUSHING DURING INSTALLATION*****



1/4-28 GREASE FITTING

DELRIN BUSHING

3/4 FLAT WASHER

3/4-16 NYLOC NUT

END CAP

END CAP RETAINER BOLT

B

B

A

A

P3FAB

TITLE:
**UPPER AND LOWER CONTROL
ARM INSTALL GUIDE
(DROPMEMBER SPECIFIC)**

SIZE DWG. NO. REV

A

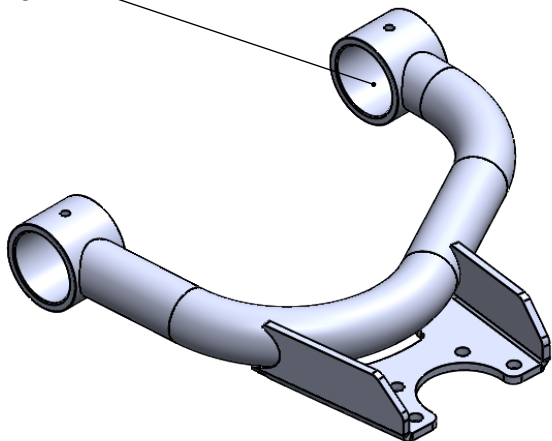
2

1

2

1

DO NOT PAINT OR POWDERCOAT INSIDE SURFACE WHERE BUSHING RIDES



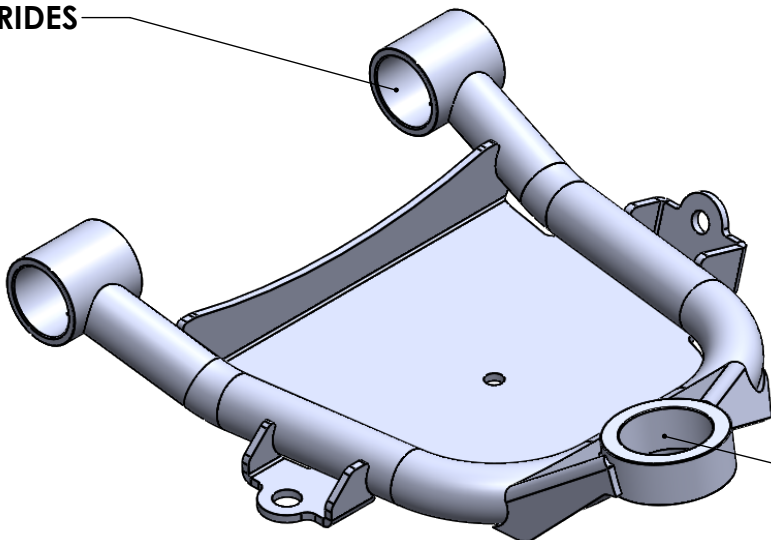
DO NOT PAINT OR POWDERCOAT SURFACE WHERE BUSHING RIDES



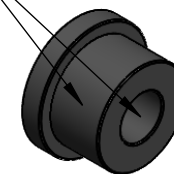
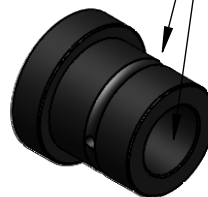
B

B

DO NOT PAINT OR POWDERCOAT INSIDE SURFACE WHERE BUSHING RIDES



APPLY LIGHT COAT OF SYNTHETIC GREASE TO INSIDE AND OUTSIDE SURFACES OF BUSHING TO AID IN ASSEMBLY



DO NOT PAINT OR POWDERCOAT INSIDE SURFACE WHERE BALL JOINT INSTALLS

A

A

P3FAB

TITLE: UPPER AND LOWER CONTROL ARM INSTALL GUIDE (DROPMEMBER SPECIFIC)

SIZE DWG. NO. REV

A

2

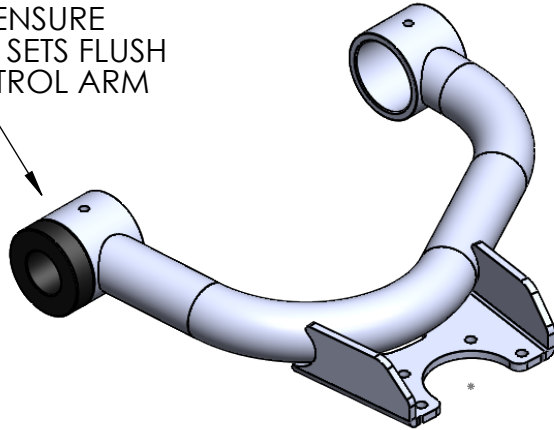
1

UPPER CONTROL ARM BUSHING AND SHAFT INSTALLATION (CONTINUED ON NEXT PAGE)

B

B

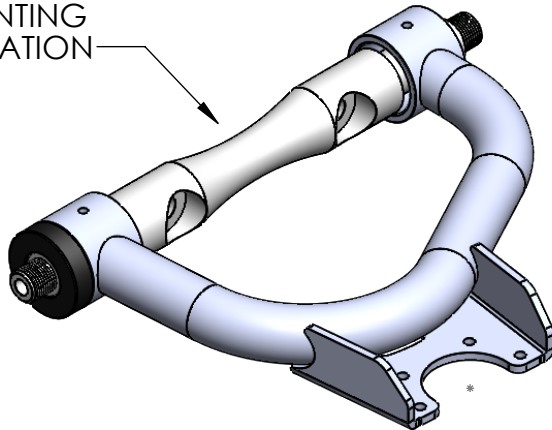
STEP 1: INSTALL BUSHING ON ONE SIDE; ENSURE BUSHING FACE SETS FLUSH AGAINST CONTROL ARM PIVOT TUBE



NOTES: LIGHTLY COAT BUSHING SURFACES WITH A SYNTHETIC BASED GREASE TO AID IN ASSEMBLY

IT MAY BE NECESSARY TO USE A SOFT FACED Mallet TO HELP THE BUSHING SEAT, HOWEVER A PRESS WILL NOT BE NEEDED

STEP 2: INSTALL CONTROL ARM CROSS-SHAFT; ENSURE CROSS-SHAFT MOUNTING SURFACE ORIENTATION IS CORRECT FOR MOUNTING BRACKET CONFIGURATION



A

A

P3FAB

TITLE:
**UPPER AND LOWER CONTROL
ARM INSTALL GUIDE
(DROPMEMBER SPECIFIC)**

SIZE DWG. NO. REV

A

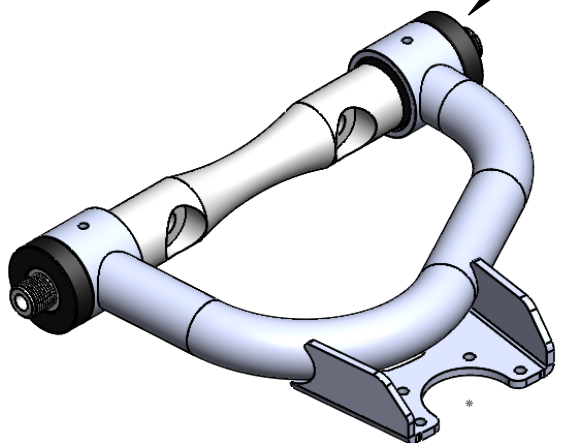
2

1

UPPER CONTROL ARM BUSHING AND SHAFT INSTALLATION

B

B

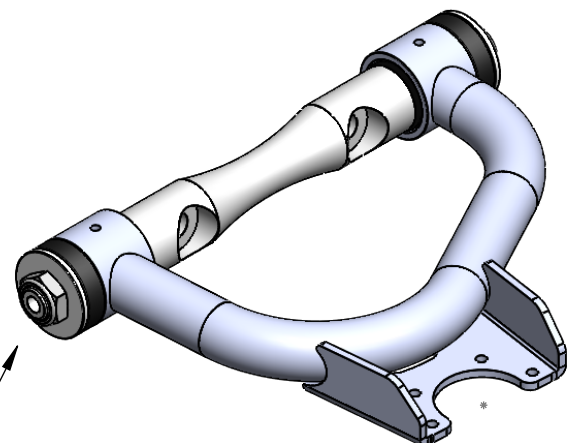


STEP 3: INSTALL BUSHING ON OTHER SIDE
ENSURE BUSHING FACE SETS FLUSH AGAINST CONTROL ARM PIVOT TUBE

STEP 4: INSTALL FLAT WASHER AND 3/4 NYLOC NUT ON BOTH SIDES OF CROSS-SHAFT

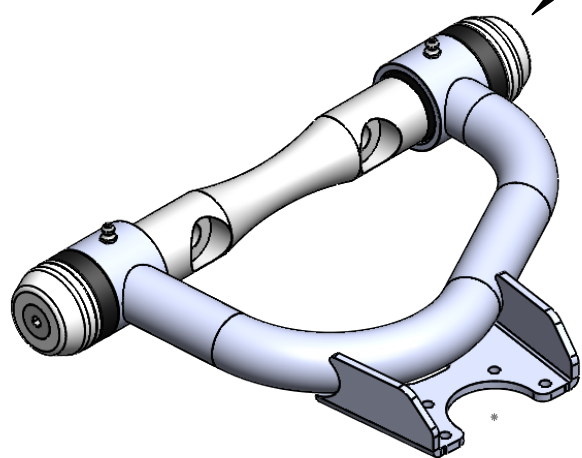
TIGHTEN BY HAND UNTIL FLAT WASHER SEATS AGAINST SHOULDER OF CROSS-SHAFT

DO NOT USE IMPACT WRENCH OR GUN TO TIGHTEN NUT



A

A



STEP 5: INSTALL BILLET END CAPS USING 3/8 TAPERED HEAD BOLT
RECOMMENDED TO USE BLUE LOCTITE

TORQUE TO 20 FT LBS

INSTALL GREASE FITTINGS AND INJECT ONE PUMP OF SYNTHETIC GREASE INTO EACH JOINT

P3FAB

TITLE:
UPPER AND LOWER CONTROL ARM INSTALL GUIDE (DROPMEMBER SPECIFIC)

SIZE	DWG. NO.	REV
A		

2

1

2

1

LOWER CONTROL ARM BUSHING INSTALLATION

-INSTALL DELRIN BUSHINGS INTO CONTROL ARM PIVOT TUBES; ENSURE BUSHING SEATS FLUSH AGAINST EDGE OF CONTROL ARM PIVOT TUBE; LIGHTLY COAT BUSHING SURFACE USING SYNTHETIC GREASE TO AID IN ASSEMBLY

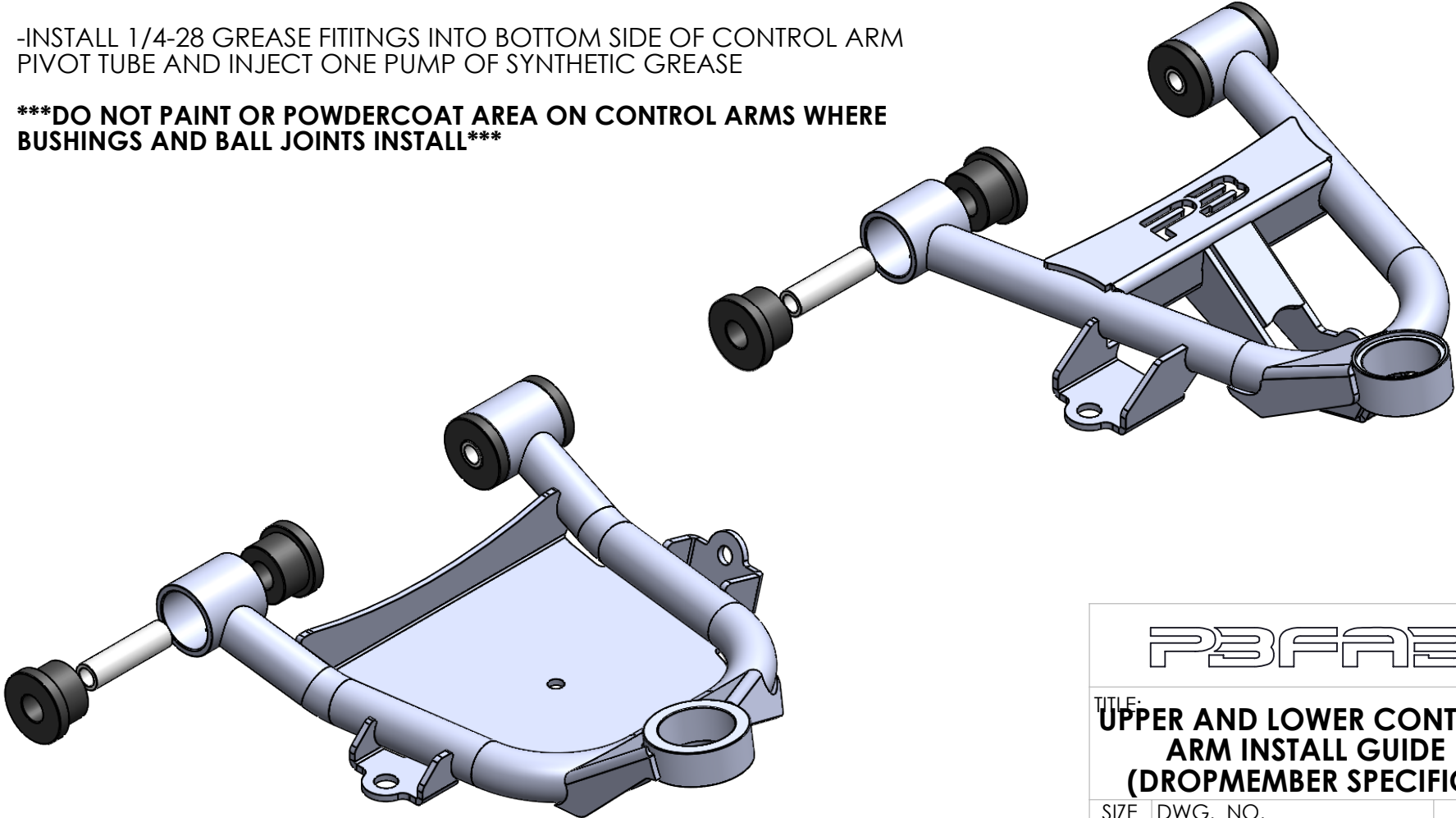
-INSTALL CRUSH TUBE INTO BUSHINGS

-INSTALL 1/4-28 GREASE FITINGS INTO BOTTOM SIDE OF CONTROL ARM PIVOT TUBE AND INJECT ONE PUMP OF SYNTHETIC GREASE

*****DO NOT PAINT OR POWDERCOAT AREA ON CONTROL ARMS WHERE BUSHINGS AND BALL JOINTS INSTALL*****

B

B



A

A

2

1

P3FAB

TITLE:
**UPPER AND LOWER CONTROL
ARM INSTALL GUIDE
(DROPMEMBER SPECIFIC)**

SIZE	DWG. NO.	REV
A		

2

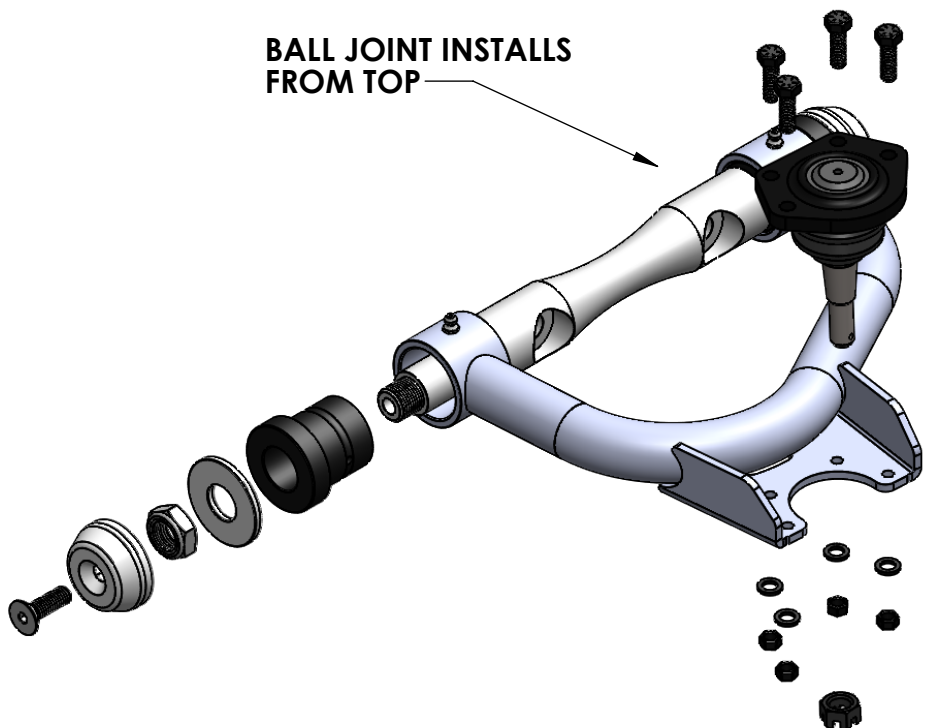
1

EXPLODED VIEW OF UPPER AND LOWER CONTROL ARM HARDWARE

BALL JOINT INSTALLS FROM TOP

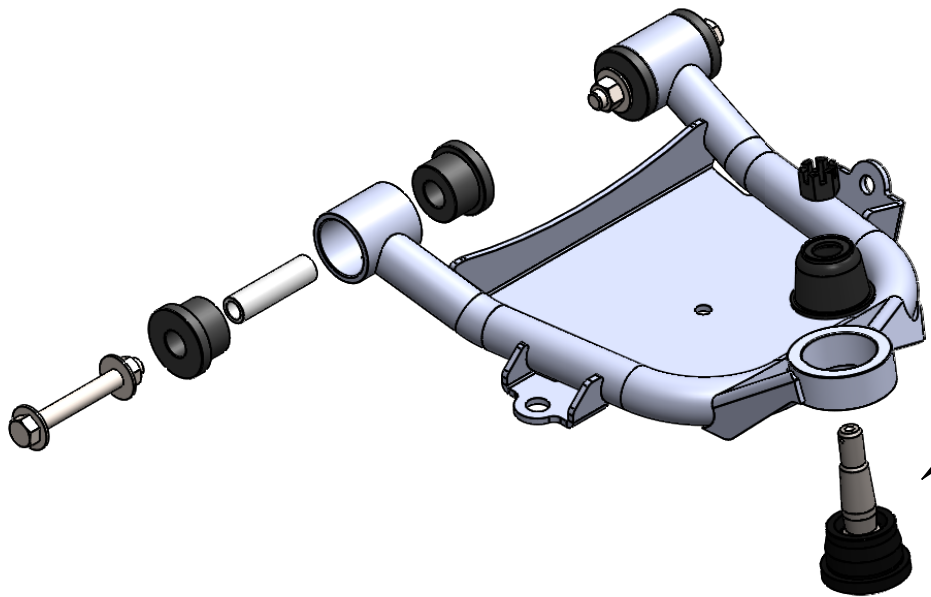
B

B



A

A



BALL JOINT INSTALLS FROM BOTTOM

P3FAB

THE UPPER AND LOWER CONTROL ARM INSTALL GUIDE (DROPMEMBER SPECIFIC)

SIZE	DWG. NO.	REV
A		

2

1