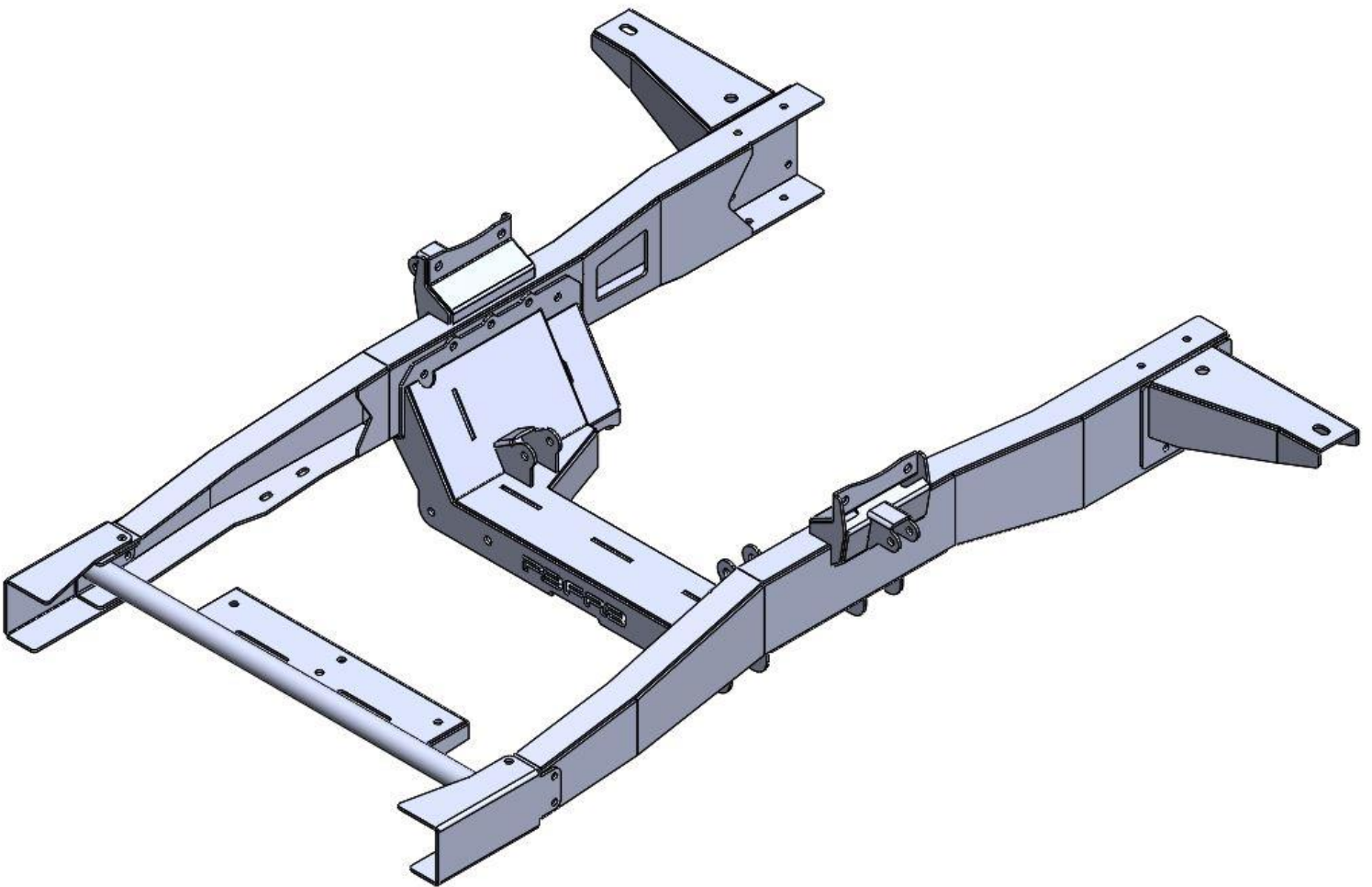


PBFAB DROPMEMBER V7

LEVEL 2 COILOVER

53-56 F100

INSTALLATION GUIDE

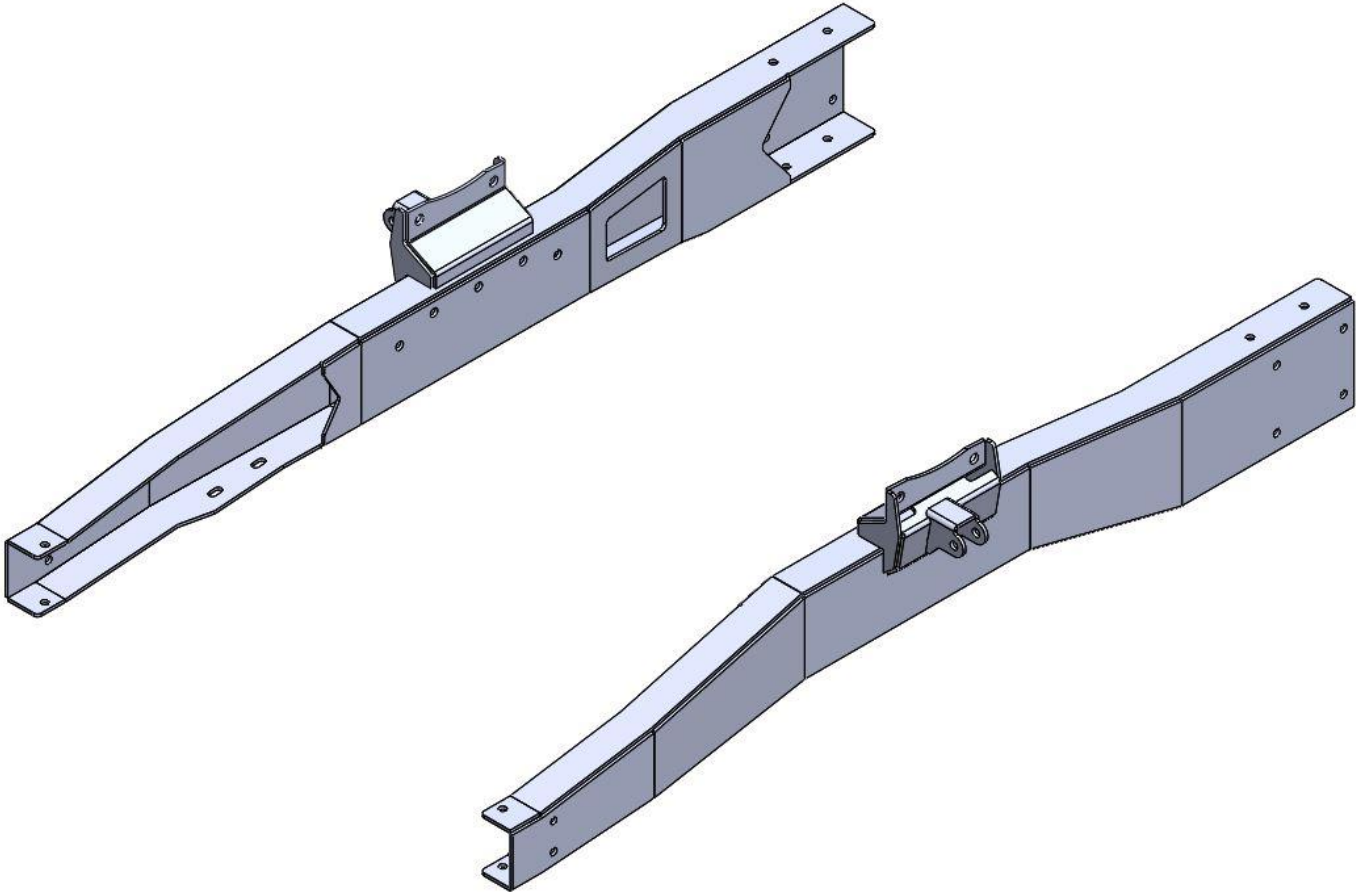


JUNE 2020

SECTION 1: INDIVIDUAL PARTS IDENTIFICATION WITH HARWDARE DESCRIPTIONS

PART# FRA5356-F100-2

DESCRIPTION: FRAME RAIL ASSEMBLY 53-56 F100; LEVEL 2 COILOVER SPECIFIC



HARDWARE DESCRIPTION:

7/16 X 1.25 GRADE 8 BOLT USS (QTY. 16)

7/16 GRADE 8 NYLOC NUT (QTY. 16)

3/8 GRADE 8 FLAT WASHER USS (QTY. 32)

1/2 X 2.5 GRADE 8 BOLT USS (QTY. 4)

1/2 GRADE 8 NYLOC NUT USS (QTY. 4)

7/16 GRADE 8 FLAT WASHER (QTY. 8)

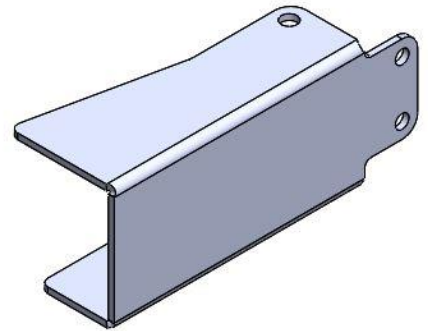
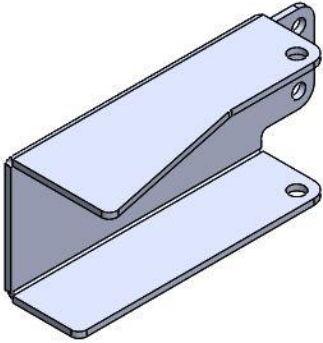
9/16 X 2.75 GRADE 8 BOLT USS (QTY. 4)

9/16 GRADE 8 NYLOC NUT USS (QTY. 4)

9/16 GRADE 8 FLAT WASHER SAE (QTY. 8)

PART# FRE5356-F100

DESCRIPTION: FRONT RAIL EXTENSION 53-56 F100; SPECIFIC TO DM7 FRAME RAIL ASSEMBLY



HARDWARE DESCRIPTION:

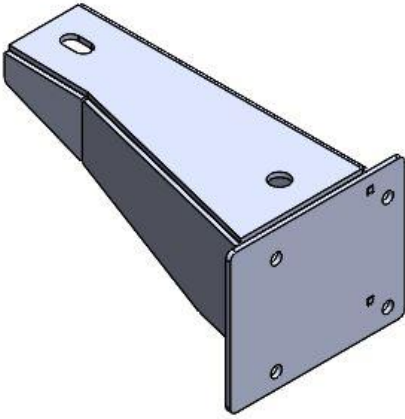
7/16 X 1.25 GRADE 8 BOLT USS (QTY. 8)

7/16 GRADE 8 NYLOC NUT USS (QTY. 8)

3/8 GRADE 8 FLAT WASHER USS (QTY. 16)

PART# FCM5356-F100-DM7

DESCRIPTION: FRONT CAB MOUNTING BRACKETS 53-56 F100; SPECIFIC TO DM7
FRAME RAIL ASSEMBLY

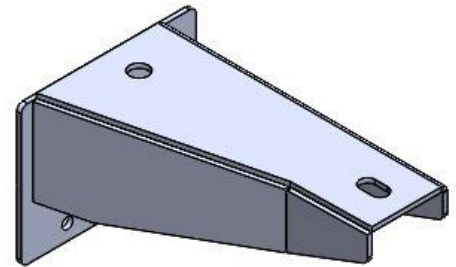


HARDWARE DESCRIPTION:

7/16 X 1.5 GRADE 8 BOLT USS (QTY. 8)

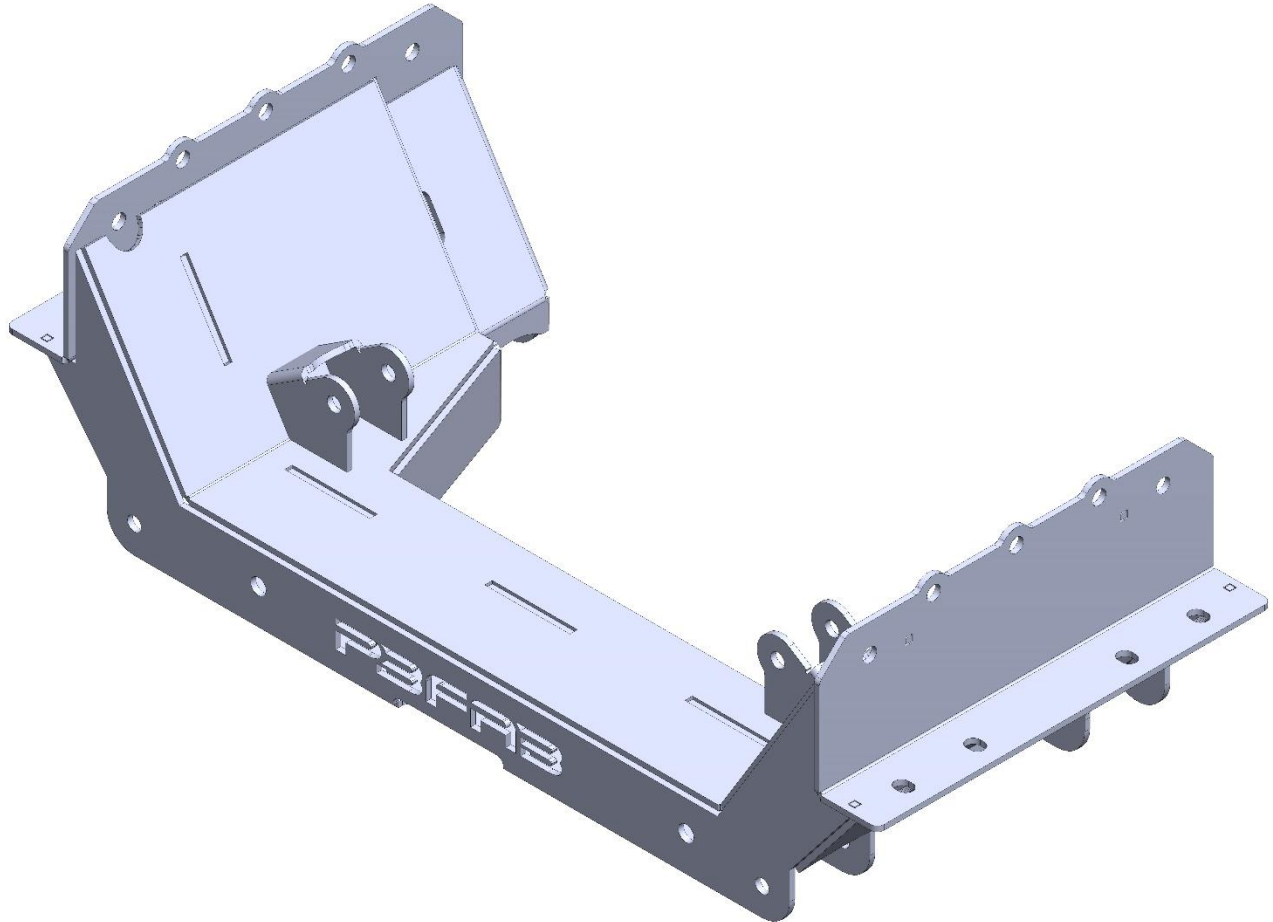
7/16 GRADE 8 NYLOC NUT USS (QTY. 8)

3/8 GRADE 8 FLAT WASHER USS (QTY. 16)



PART# DM7-FRA-3

DESCRIPTION: DROPMEMBER VERSION 7; FRAME RAIL ASSEMBLY SPECIFIC



HARDWARE DESCRIPTION:

7/16 X 1.25 GRADE 8 BOLT USS (QTY. 18)

7/16 GRADE 8 LOCKWASHER (QTY. 18)

3/8 GRADE 8 FLAT WASHER (QTY. 18)

1/2 X 4 GRADE 8 BOLT USS (QTY.4) **LOWER CONTROL ARM MOUNTING BOLTS**

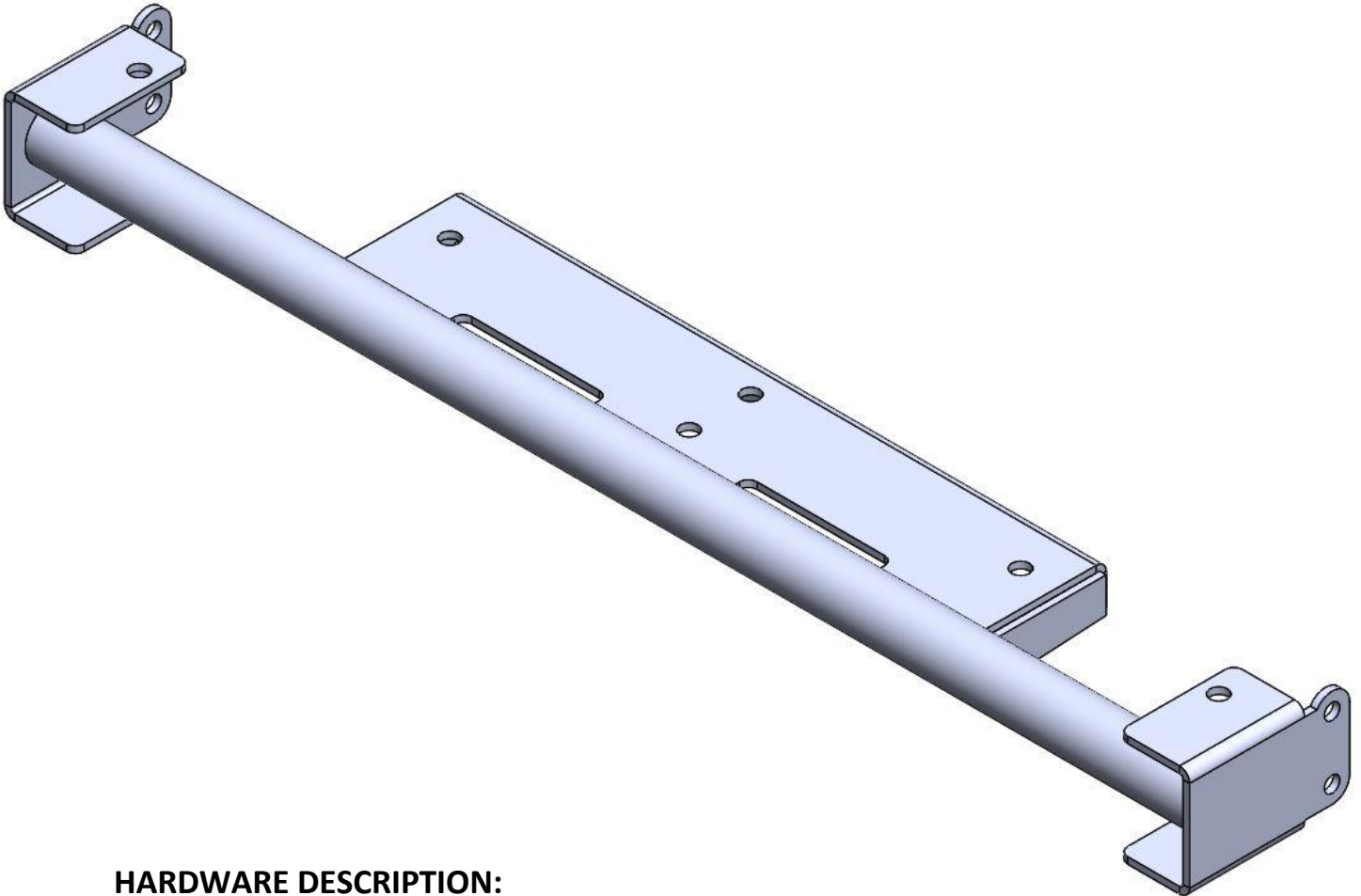
1/2 X 3.25 GRADE 8 BOLT USS (QTY. 2) **MOTOR MOUNT MOUNTING BOLTS**

1/2 GRADE 8 NYLOC NUT USS (QTY.6)

7/16 GRADE 8 FLAT WASHER USS (QTY.12)

PART# CSXM5356-F100

DESCRIPTION: CORE SUPPORT CROSS MEMBER 53-56 F100; DM7 FRAME RAIL
ASSEMBLY SPECIFIC



HARDWARE DESCRIPTION:

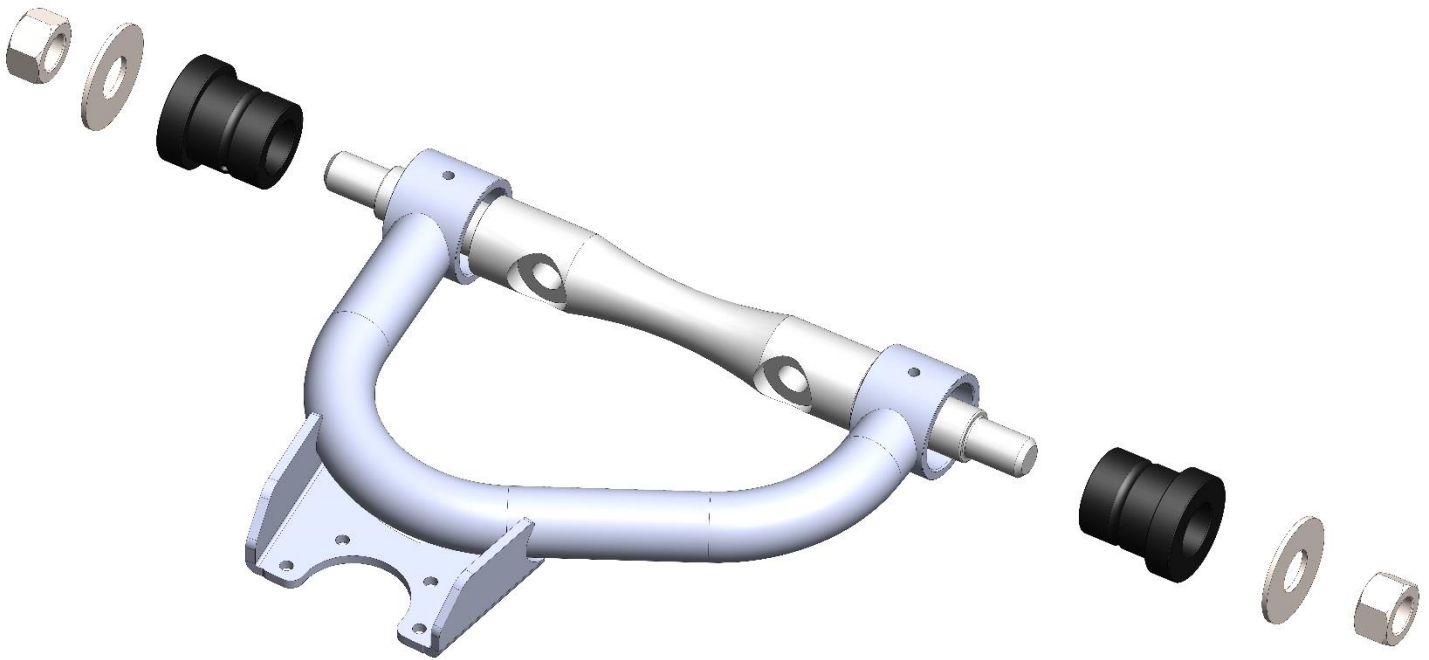
7/16 X 1.25 GRADE 8 BOLT USS (QTY. 8)

3/8 GRADE 8 FLAT WASHER USS QTY. 16)

7/16 GRADE 8 NYLOC NUT USS (QTY. 8)

PART# UCA-1N-C10

DESCRIPTION: UPPER CONTROL ARM; 1 INCH NARROWED; C10 BALL JOINT CUP
(ALSO COMPATIBLE WITH C30 BALL JOINT)



HARDWARE DESCRIPTION:

UPPER CONTROL ARM SHAFT (QTY. 2)

UPPER CONTROL ARM BUSHING (QTY. 4)

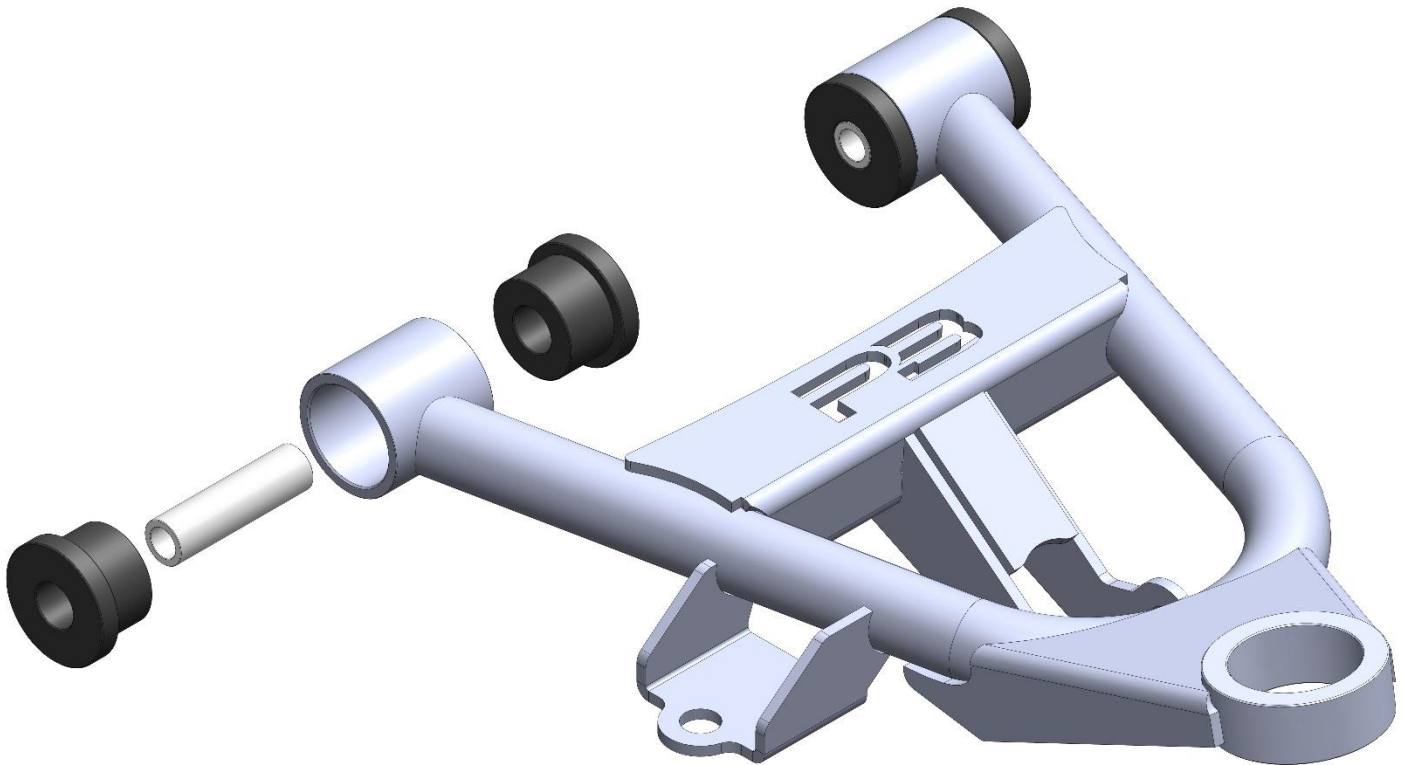
3/4 GRADE 5 FLAT WASHER (SILVER ZINC) (QTY. 4)

3/4 GRADE 5 NYLOC NUT SAE (SILVER ZINC) (QTY. 4)

GREASABLE ZERK FITTING (QTY. 4)

PART# LCA-1N-C10-DM7-C

DESCRIPTION: LOWER CONTROL ARM; 1 INCH NARROWED; C10 BALL JOINT; DM7 SPECIFIC; COIL OVER SPECIFIC



HARDWARE DESCRIPTION:

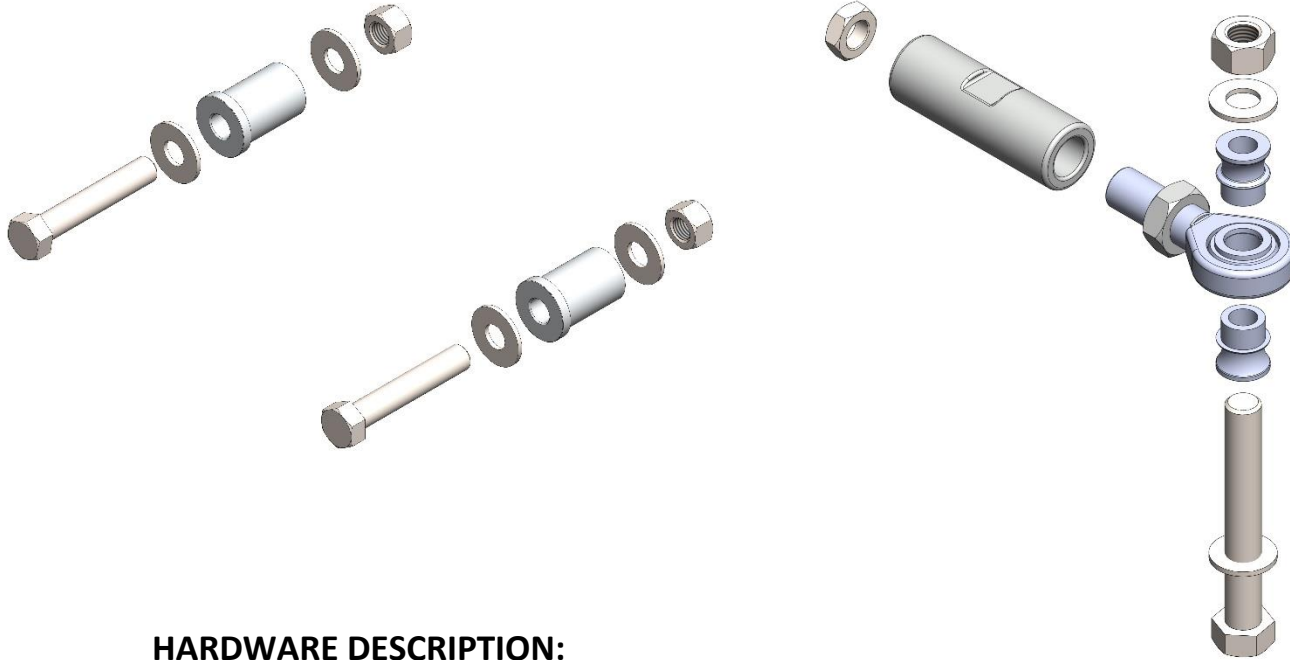
LOWER CONTROL ARM BUSHING (DMV6) (QTY. 8)

LOWER CONTROL ARM BUSHING CRUSH TUBE (DMV6) (QTY. 4)

GREASABLE ZERK FITTING (QTY. 4)

PART# RPH

DESCRIPTION: RACK AND PINION HARWDARE KIT



HARDWARE DESCRIPTION:

3/4 LH – 3/4 BORE ROD END WITH JAM NUT (QTY.2)

TIE ROD ADJUSTER SLEEVE (QTY.2)

9/16-18 RH JAM NUT (QTY.2)

BILLET RACK MOUNT BUSHING (QTY.2)

9/16 X 3.5 GRADE 8 BOLT USS (QTY.2)

9/16 GRADE 8 FLAT WASHER USS (QTY.4)

9/16 GRADE 8 NYLOC NUT USS (QTY.2)

5/8 X 4.5 GRADE 8 BOLT USS (QTY.2)

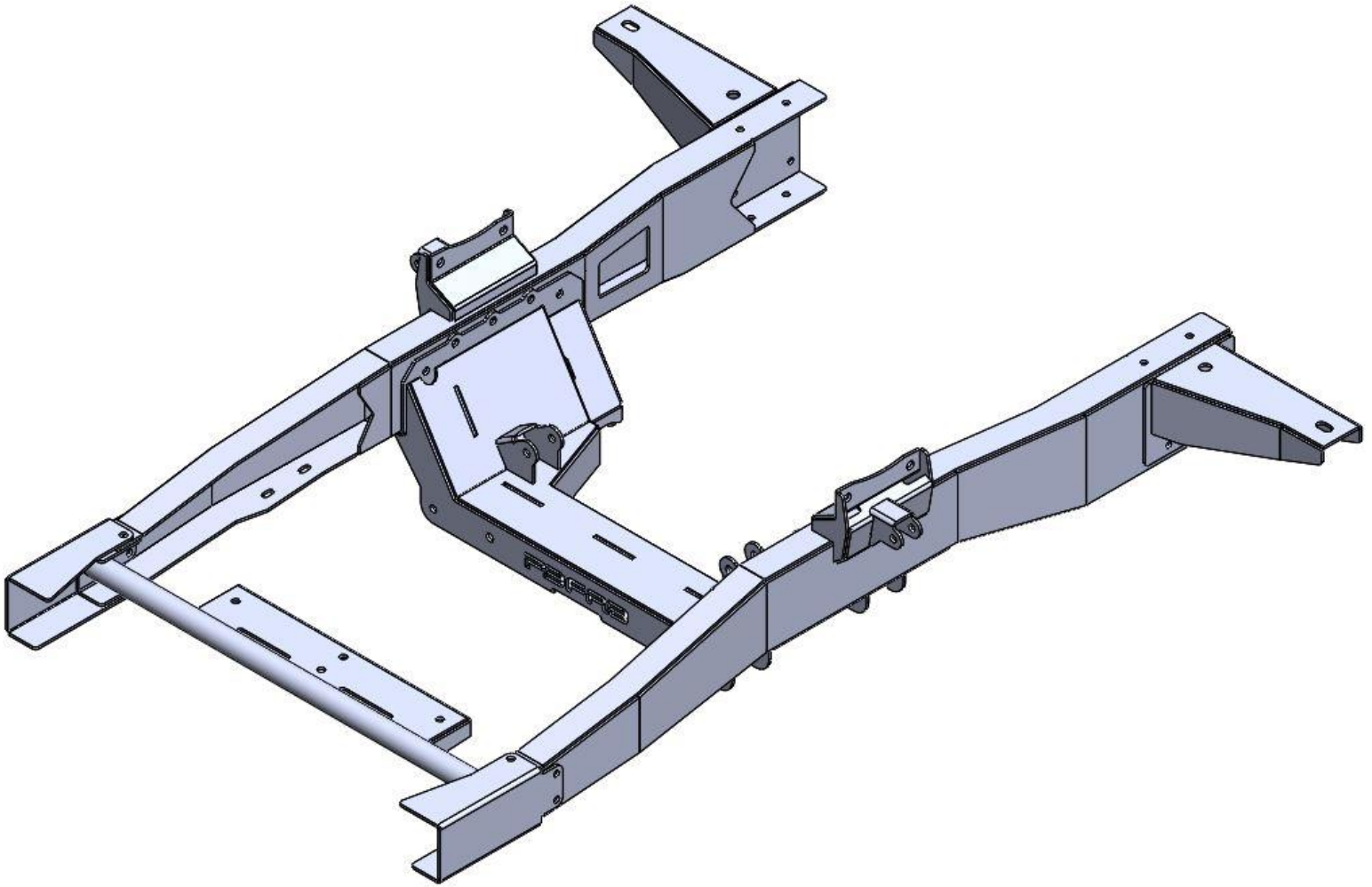
5/8 GRADE 8 NYLOC NUT USS (QTY.2)

5/8 GRADE 8 FLAT WASHER SAE (QTY.4)

3/4 TO 5/8 MISALIGNMENT SPACER (QTY.4)

-FRONT CLIP ASSEMBLY

-ASSEMBLING FRONT CLIP BEFORE ATTACHING TO FACTORY FRAME RAILS IS
RECOMMENDED FOR EASE OF INSTALLATION



-ASSEMBLE FABRICATED FRAME RAILS TO DROPMEMBER USING SUPPLIED GRADE 8 HARDWARE

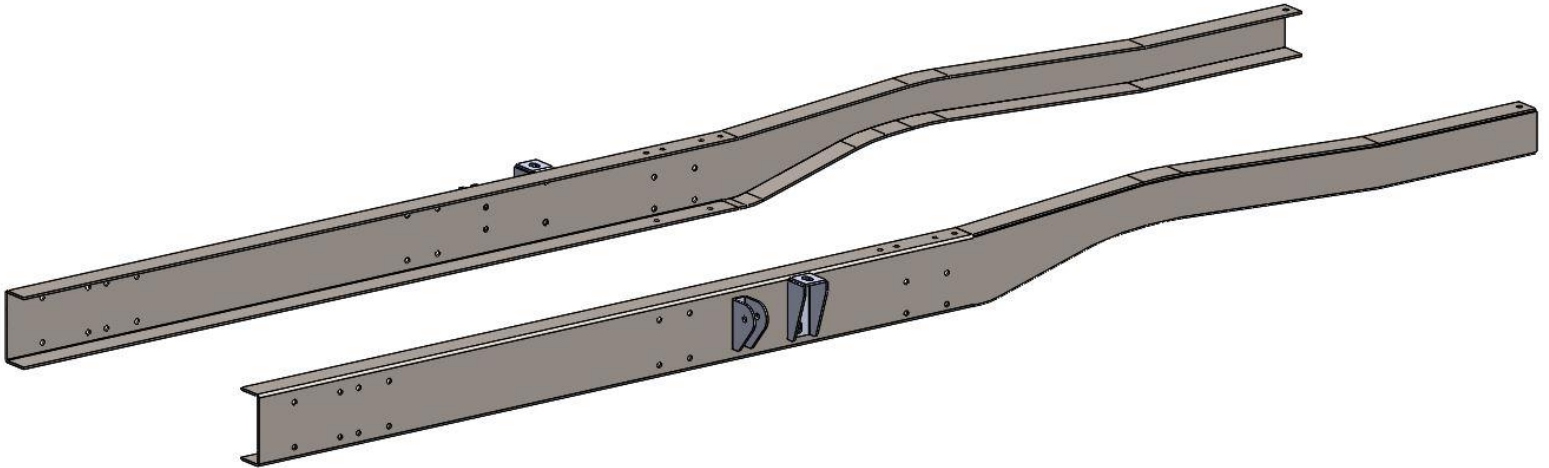
-INSTALL FRONT CORE SUPPORT CROSSMEMBER USING SUPPLIED GRADE 8 HARDWARE

*****DO NOT FULLY TIGHTEN AT THIS TIME*****

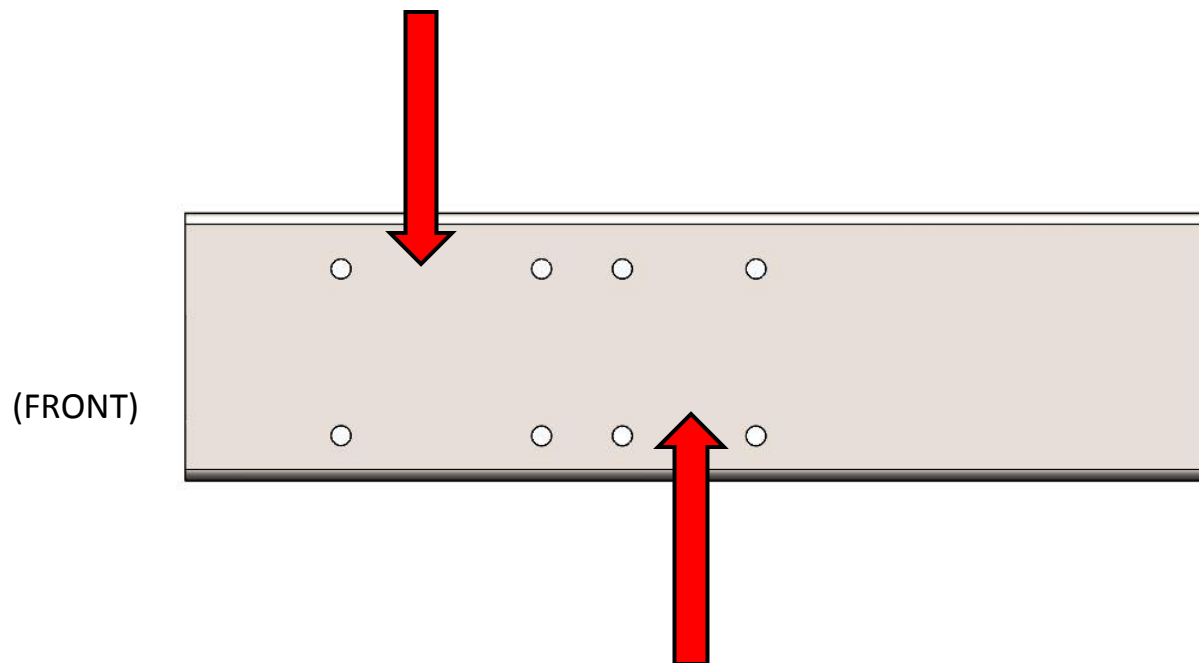
-PREP FACTORY FRAME RAILS FOR FRONT CLIP INSTALLATION

-REMOVE FACTORY FRONT LEAF SPRING HANGERS AND CAB MOUNTS

-FACTORY FRONT CAB MOUNTING HOLES WILL BE USED FOR CUT LINE
REFERENCE AND FRAME RAIL ASSEMBLY MOUNTING ALIGNMENT



***** FACTORY FRONT CAB BRACKET MOUNTING HOLES*****

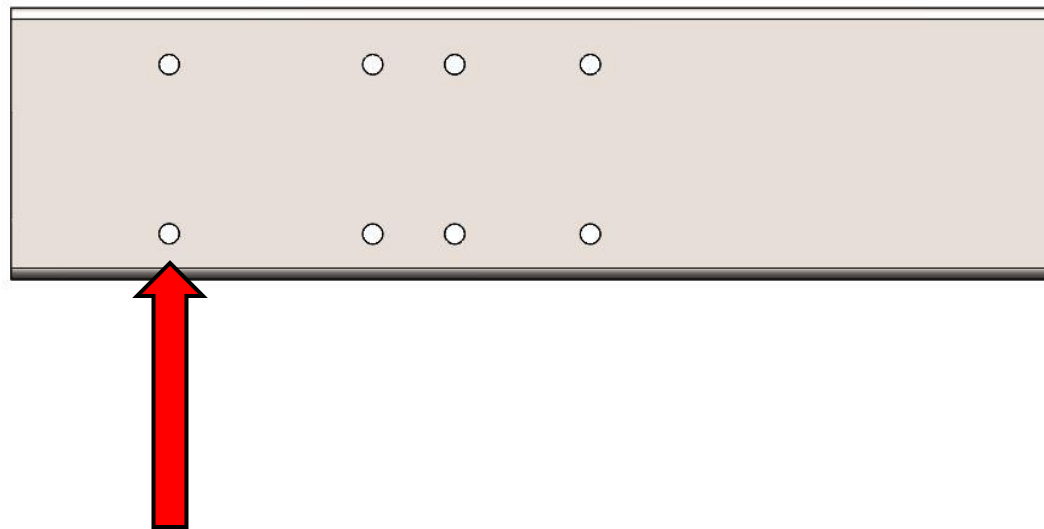


*****FACTORY FRONT RUNNING BOARD MOUNTING BRACKET HOLES*****

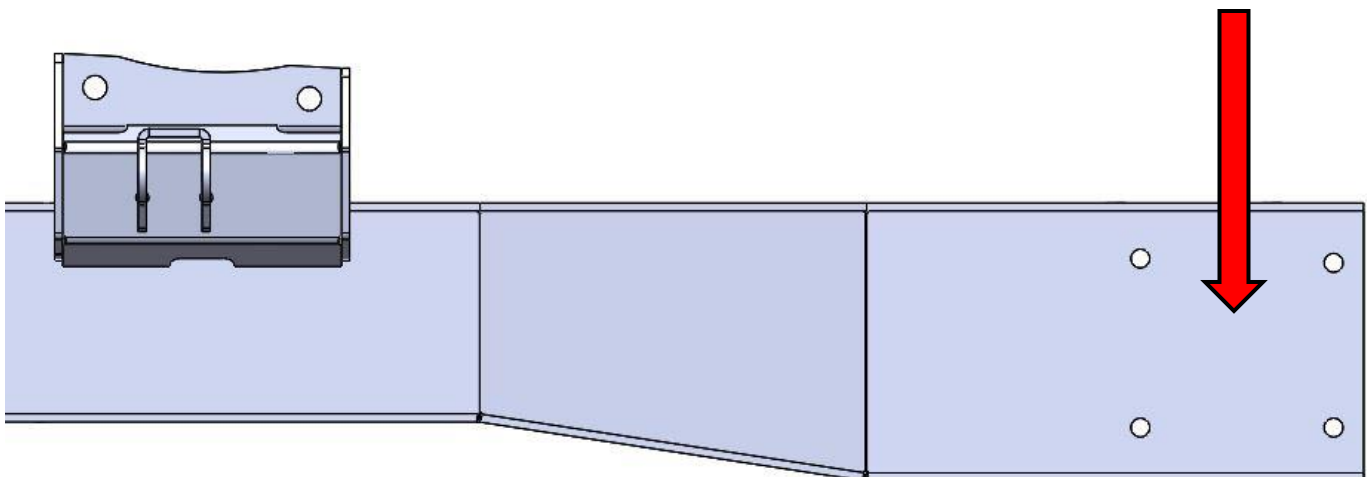
-CUT FACTORY FRAME RAILS FOR FRONT CLIP INSTALLATION

MEASURE FORWARD 3 ½ INCHES FROM LOWER FRONT FACTORY CAB MOUNT RIVET HOLE **(REFERENCED BY ARROW BELOW)**

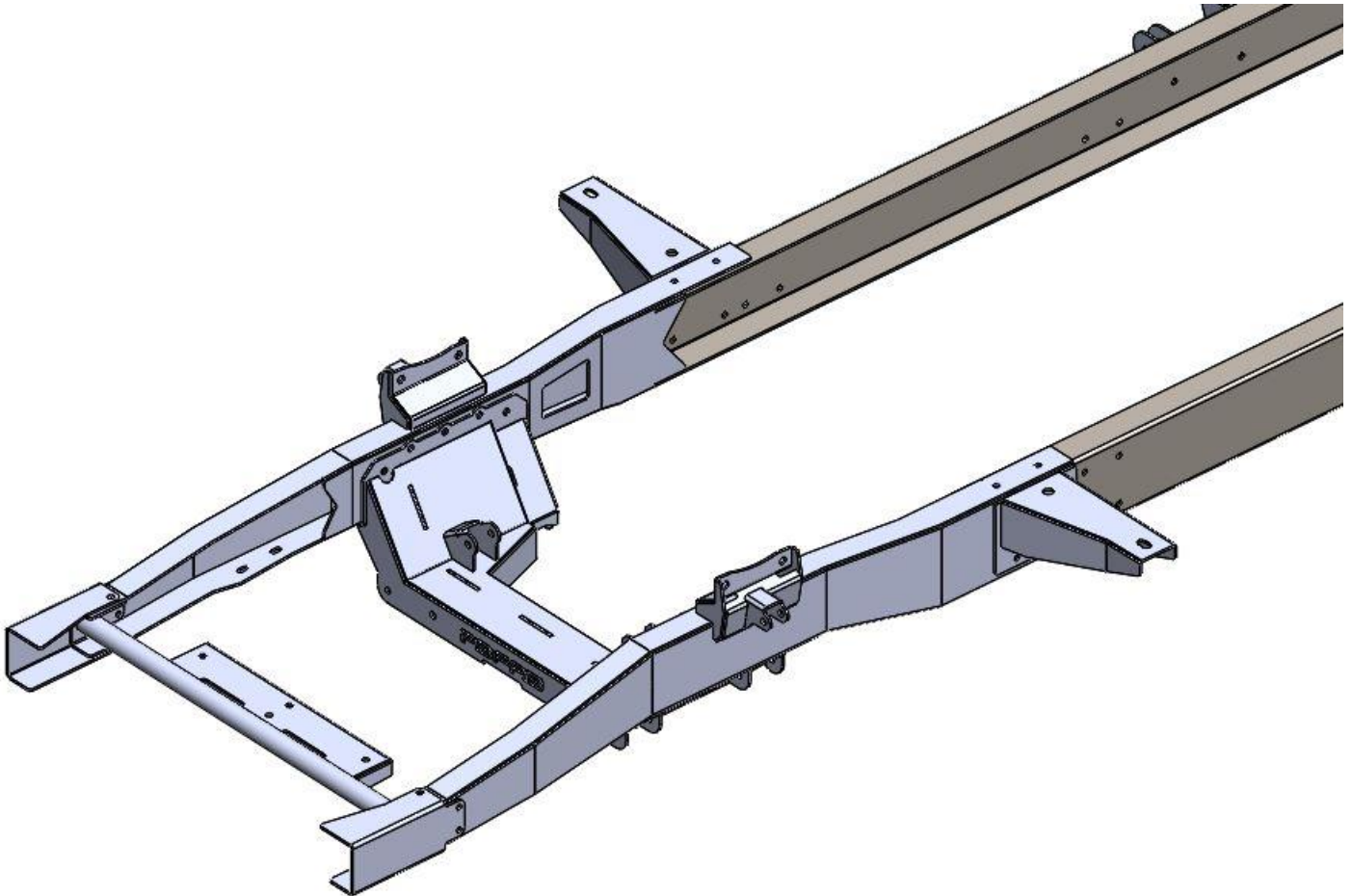
CUT OFF FRONT FACTORY FRAME RAIL SECTIONS 3 ½ INCHES FORWARD OF LOWER FRONT FACTORY CAB MOUNT RIVET HOLE **(REFERENCED BY ARROW BELOW)**



HOLES IN REAR FRAME RAIL ASSEMBLY WILL ALIGN WITH FACTORY CAB MOUNTING BRACKET RIVET HOLES IN FACTORY FRAME AND SECURE FORE-AFT LOCATION OF FRON CLIP



-INSTALL FRONT CLIP ASSEMBLY ONTO FACTORY FRAME RAILS



-IT MAY BE NECESSARY TO SLIGHTLY TRIM FACTORY FRAME RAIL WIDTH FOR THE FRONT CLIP ASSEMBLY TO SLIDE OVER FACTORY RAILS

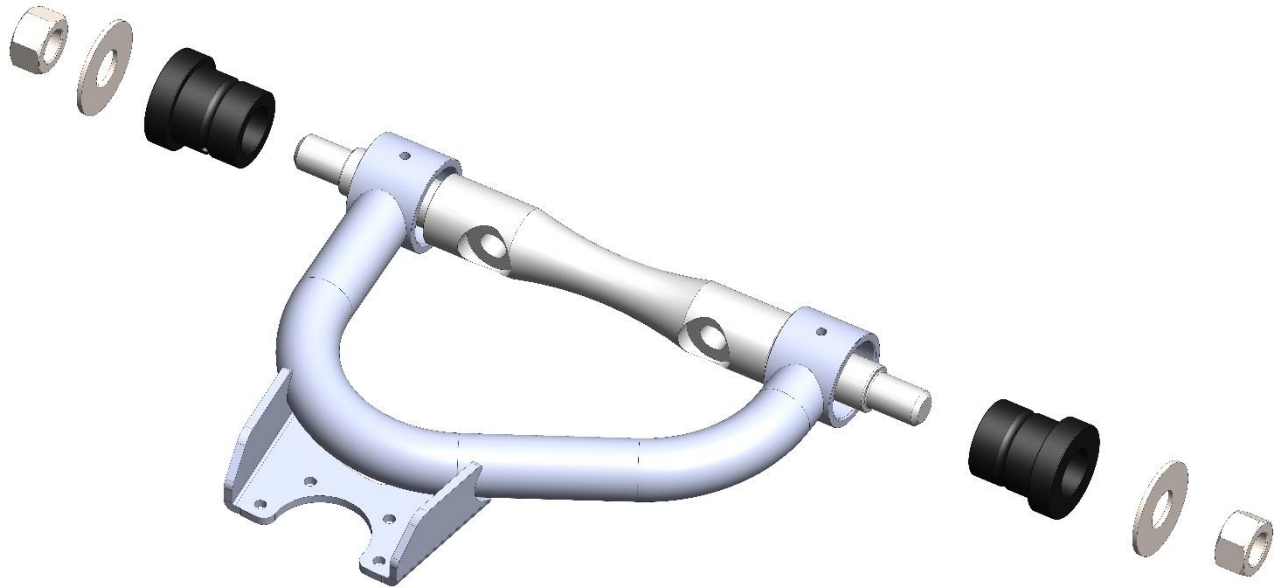
-ENSURE FRONT CLIP ASSEMBLY IS LEVEL AND SQUARE TO FACTORY CHASSIS

-DRILL ADDITIONAL MOUNTING HOLES USING FRONT RAIL ASSEMBLIES AS GUIDES

-TORQUE ALL 7/16 GRADE 8 HARDWARE TO 65 FT LBS

-UPPER CONTROL ARM INSTALLATION

(DRIVER SIDE ARM SHOWN)



-USE DIAGRAM TO INSTALL DELRIN BUSHINGS IN UPPER CONTROL ARM.

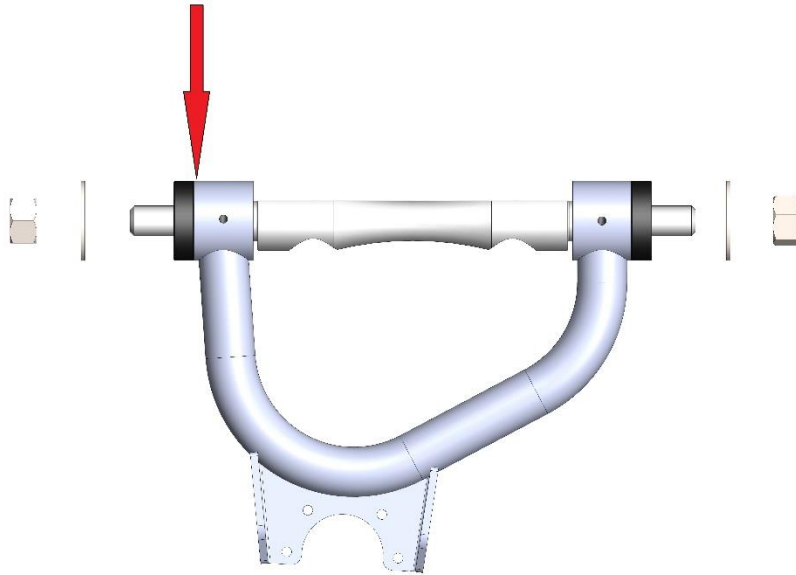
DRIVER SIDE ARM SHOWN IN IMAGE

-USE A TEFLON BASED HI-TEMP SYNTHETIC GREASE TO LUBRICATE BUSHINGS FOR INSTALLATION.

*****DO NOT YET TIGHTEN ANY HARDWARE*****

*****CONTINUED ON NEXT PAGE*****

The upper control arm bushing must be fully seated against the machined surface of the pivot tube BEFORE tightening the nyloc nut. DO NOT use the washer and nyloc nut to press the bushing into place. This can bind and break the bushing.



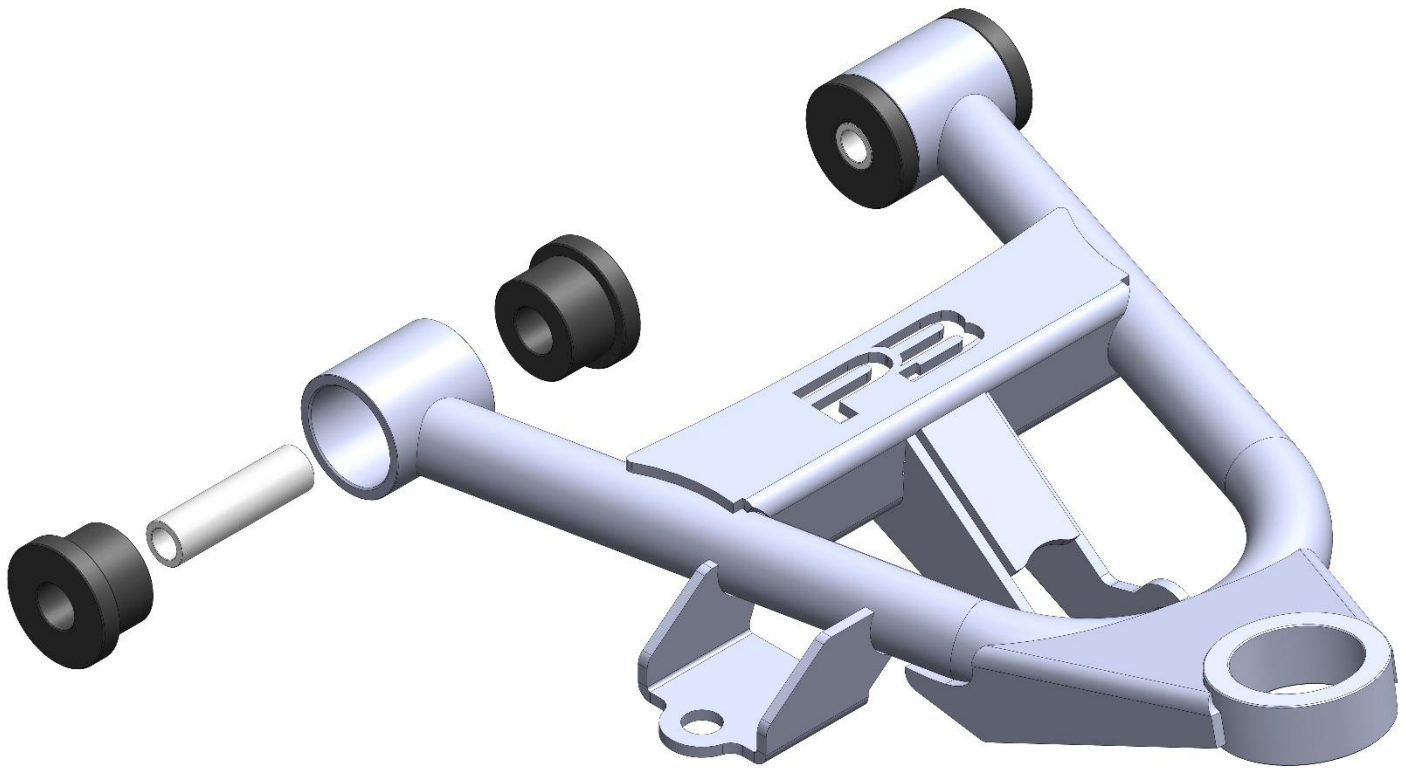
Once the bushing is fully seated, tighten the nyloc nut until the washer bottoms out against the machined shoulder on the cross-shaft. Then tighten 1/4 turn.

(DRIVER SIDE CONTROL ARM SHOWN)

- FOLLOW DIAGRAM CLOSELY TO ENSURE PROPER BUSHING INSTALLATION. FAILURE TO FOLLOW RECOMMENDATIONS WILL VOID ANY WARRANTY.
- IF UPPER CONTROL ARM BUSHINGS SEEM EXTREMELY TIGHT; TOSS THEM IN THE FREEZER FOR APPROX 10 MINUTES AND RE-TRY
- USE SUPPLIED GRADE 8 HARDWARE TO ATTACH UPPER CONTROL ARMS SHAFTS TO UPPER CONTROL ARM MOUNTING BRACKET (TORQU TO 70 FT LBS)
- UPPER CONTROL ARM SHAFT WILL MOST LIKELY NEED TO BE SHIMMED FOR PROPER ALIGNMENT

-LOWER CONTROL ARM INSTALLATION

(DRIVER SIDE ARM SHOWN)

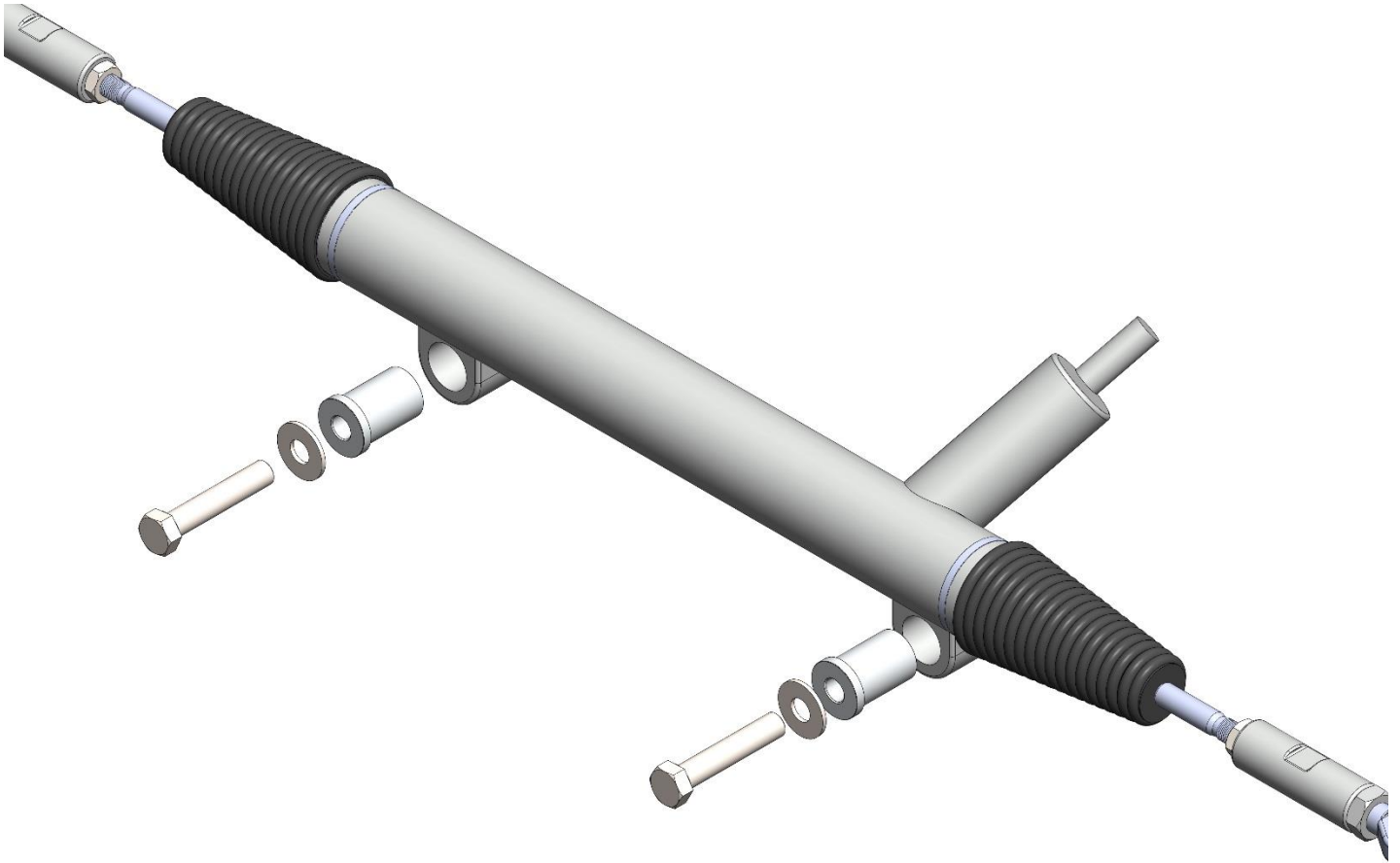


-USE DIAGRAM TO INSTALL DELRIN BUSHINGS AND DELRIN BUSHING CRUSH TUBES IN LOWER CONTROL ARM. ***DRIVER SIDE ARM SHOWN IN IMAGE***

-USE A TEFLON BASED HI-TEMP SYNTHETIC GREASE TO LUBRICATE BUSHINGS FOR INSTALLATION

- USE SUPPLIED GRADE 8 MOUNTING HARDWARE TO ATTACH LOWER CONTROL ARMS TO DROPMEMBER ASSEMBLY (TORQUE TO 70 FT LBS)

-RACK AND PINION INSTALLATION



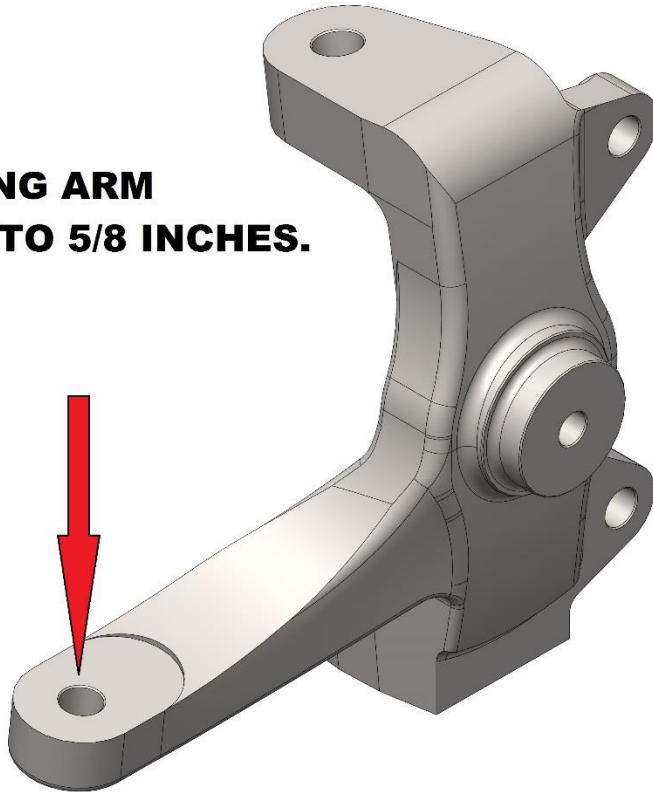
-USE SUPPLIED STEPPED ALUMINUM BUSHINGS AND 9/16 X 3.5" GRADE 8 BOLTS WITH FLAT WASHERS AND NYLOC NUTS.

-IF THE RACK AND PINION HAS RUBBER MOUNTING BUSHINGS PRESSED INTO THE BODY, REMOVE THEM AND USE THE SUPPLIED ALUMINUM BUSHINGS.

*****CONTINUED ON NEXT PAGE*****

-RACK AND PINION INSTALLATION CONTINUED

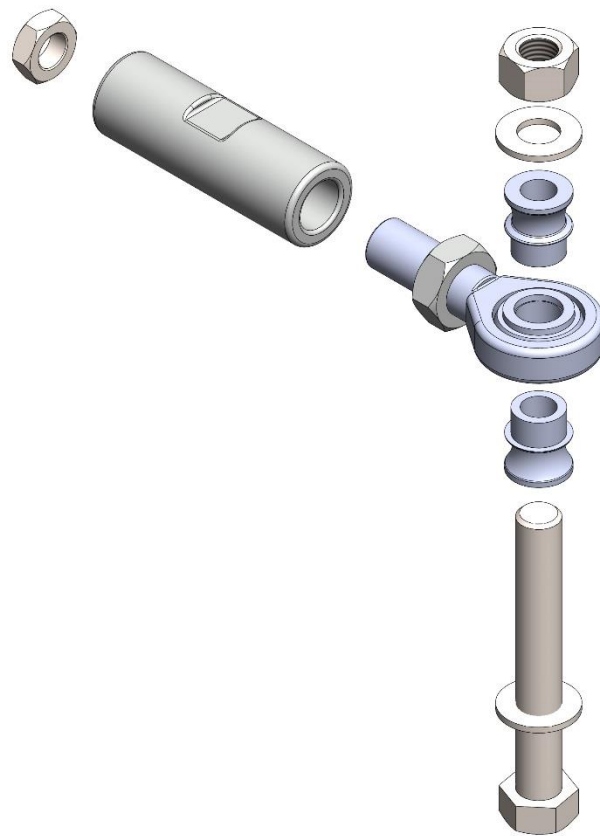
**SPINDLE'S STEERING ARM
MUST BE DRILLED TO 5/8 INCHES.**



-THE SPINDLE STEERING ARM WILL NEED TO BE DRILLED OR REAMED TO 5/8" FOR THE TIE ROD BOLT TO BE INSTALLED

*****CONTINUED ON NEXT PAGE*****

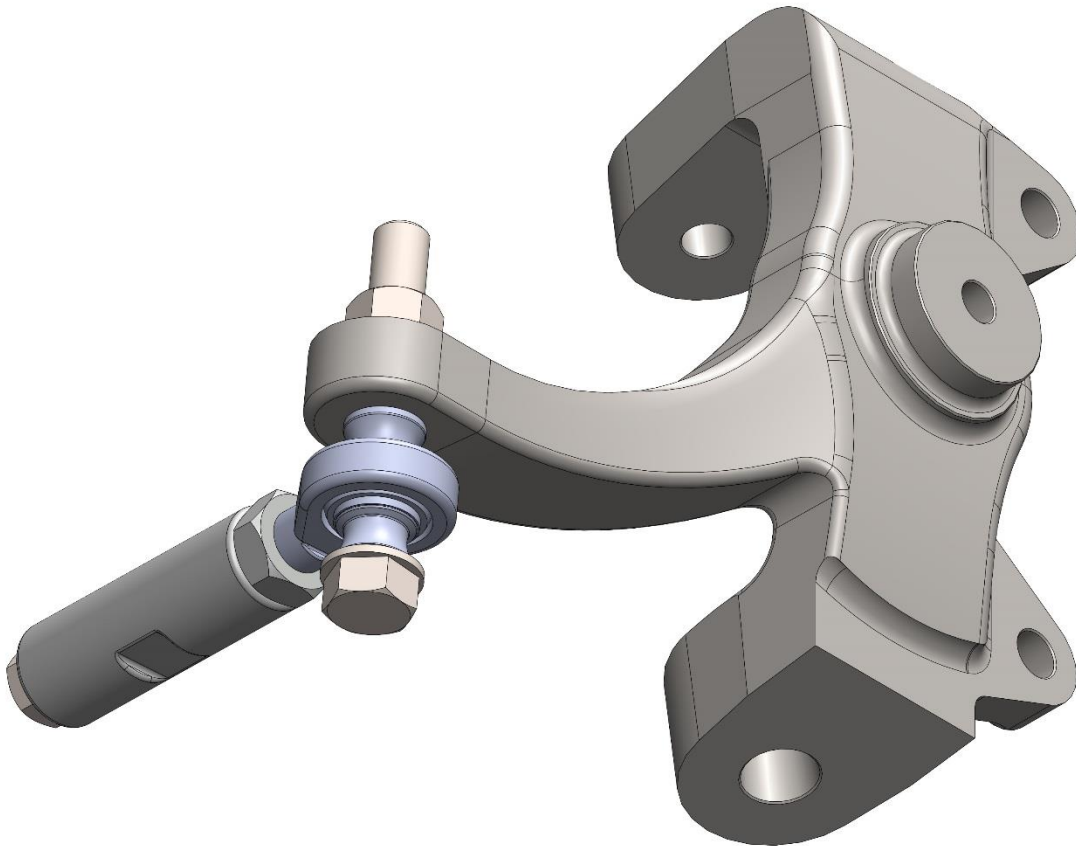
-RACK AND PINION INSTALLATION CONTINUED



-TIE ROD END HARDWARE EXPLODED VIEW

*****CONTINUED ON NEXT PAGE*****

-RACK AND PINION INSTALLATION CONTINUED



-TIE ROD ASSEMBLY WILL MOUNT TO BOTTOM SIDE OF SPINDLE'S STEERING ARM.

-IT MAY BE NECESSARY TO TRIM THE THREADED END OF THE RACK AND PINION TIE ROD TO ACHIEVE PROPER ALIGNMENT

-TO CONFIRM IF TRIMMING OF THE RACK IS NECESSARY, MOCK UP TIE ROD END TO SPINDLE

-IF TRIMMING IS IN FACT NECESSARY, TRIM 1/2 INCHES PER SIDE AT A TIME. IT'S BETTER TO REMOVE TOO LITTLE RATHER THAN TOO MUCH MATERIAL