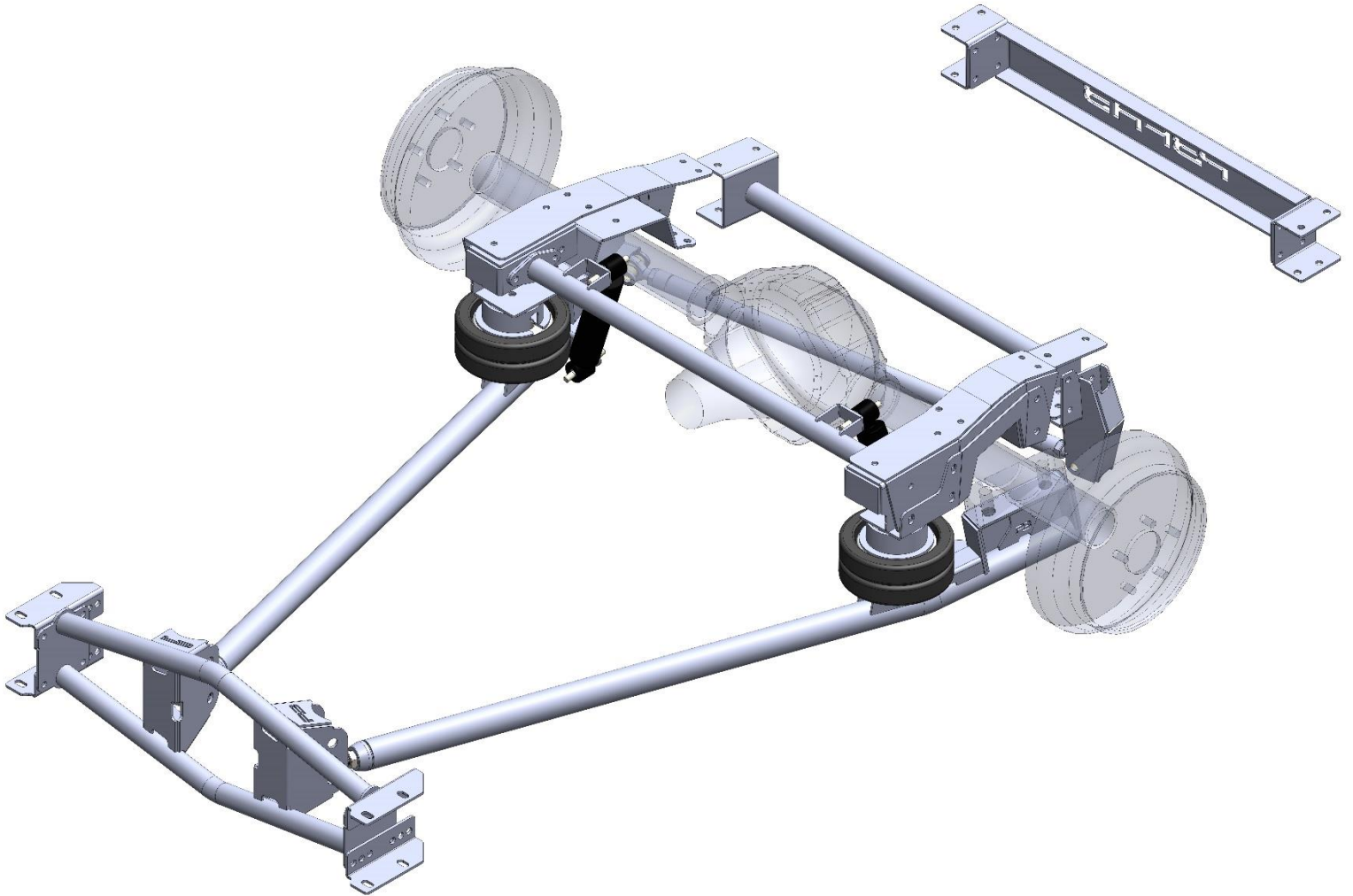


DROPMEMBER LEVEL 1 REAR AIRBAG INSTALLATION GUIDE

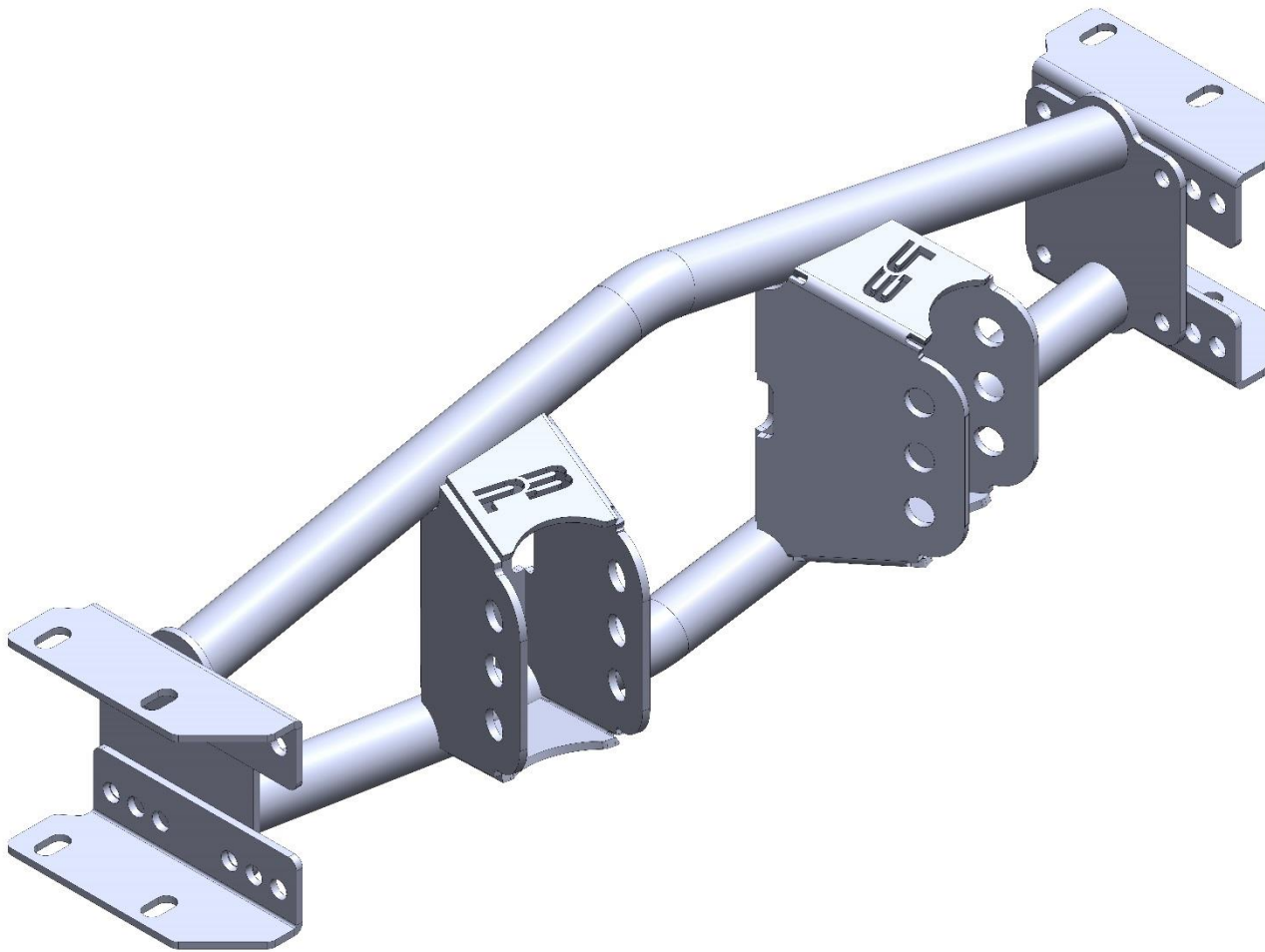


12/3/2019

SECTION 1: INDIVIDUAL PARTS IDENTIFICATION WITH HARDWARE DESCRIPTIONS

PART# TAXM6372-1P

DESCRIPTION: TRAILING ARM CROSSMEMBER 63-72 ONE PIECE DRIVE SHAFT SPECIFIC



HARDWARE DESCRIPTION:

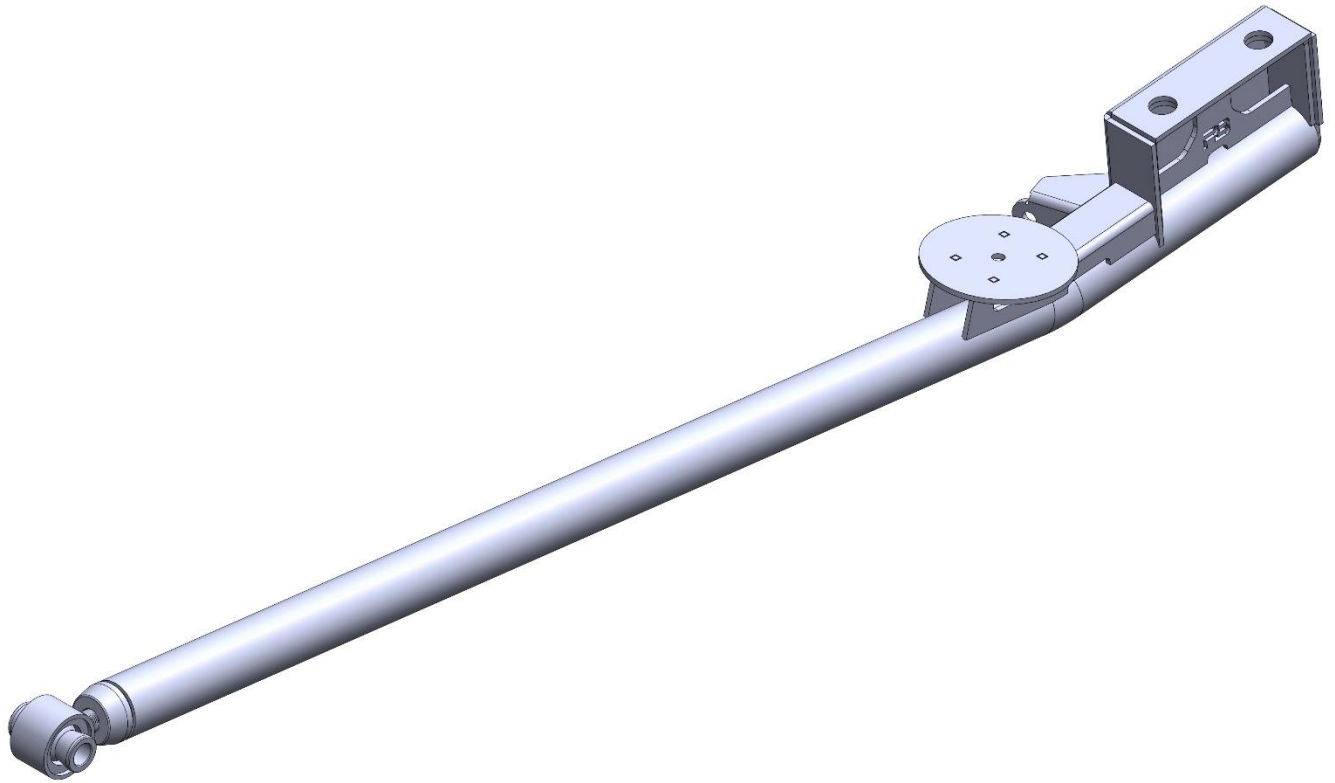
7/16 X 1.25 GRADE 8 BOLT USS (QTY. 20)

3/8 GRADE 8 FLAT WASHER USS (QTY. 40)

7/16 GRADE 8 NYLOC NUT USS (QTY. 20)

PART# TA-3-A-PHB-S2

DESCRIPTION: TRAILING ARM; 3 INCH DROP; AIRBAG; PANHARD BAR SPECIFIC;
STAGE 2 SPECIFIC



HARDWARE DESCRIPTION:

3/4 X 4.5 GRADE 8 BOLT SAE (FINE THREAD) (QTY. 2)

3/4 GRADE 8 FLAT WASHER (QTY. 4)

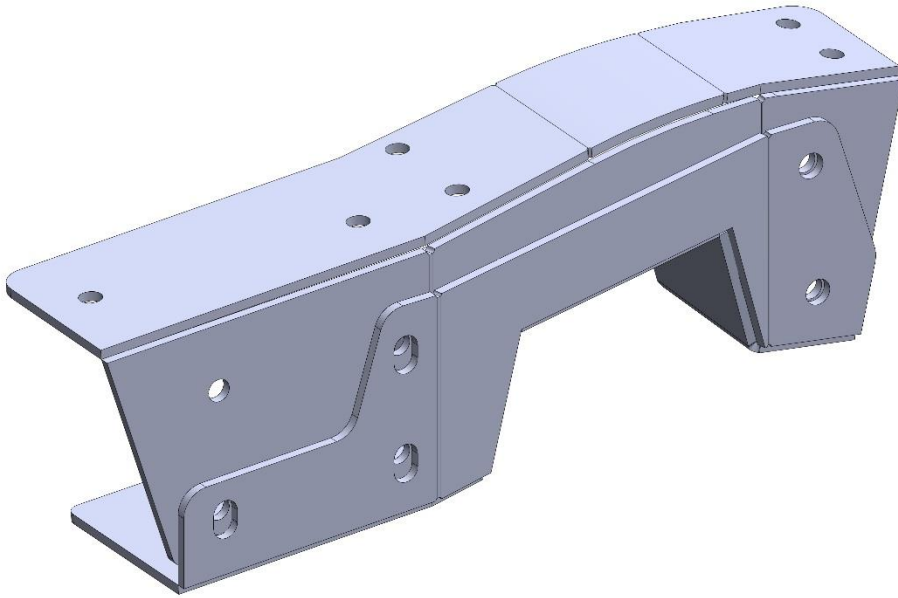
3/4 GRADE 8 NYLOC NUT SAE (FINE THREAD) (QTY. 6)

3/4 DEL SPHERE JOINT (QTY. 2)

3/4 ALUMINUM CONE SPACER (QTY. 4)

PART# RN6372-S2

DESCRIPTION: REAR NOTCH; 63-72 C10; STAGE 2 SPECIFIC



HARDWARE DESCRIPTION:

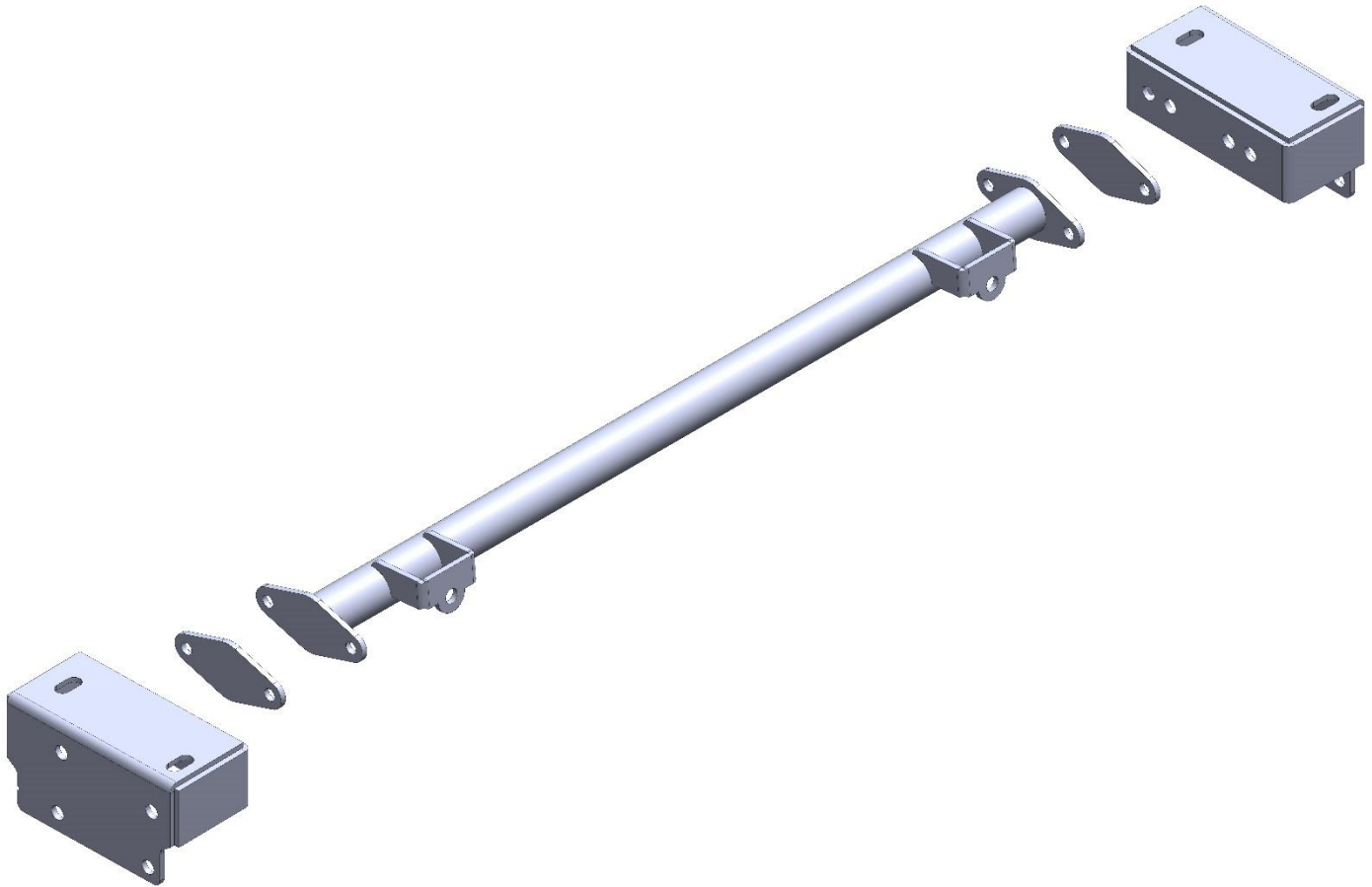
7/16 X 1.25 GRADE 8 BOLT USS (QTY. 32)

7/16 GRADE 8 NYLOC NUT USS (QTY. 32)

3/8 GRADE 8 FLAT WASHER USS (QTY. 64)

PART# USB6372-A

DESCRIPTION: UPPER SHOCK BAR 63-72; AIRBAG SPECIFIC



HARDWARE DESCRIPTION:

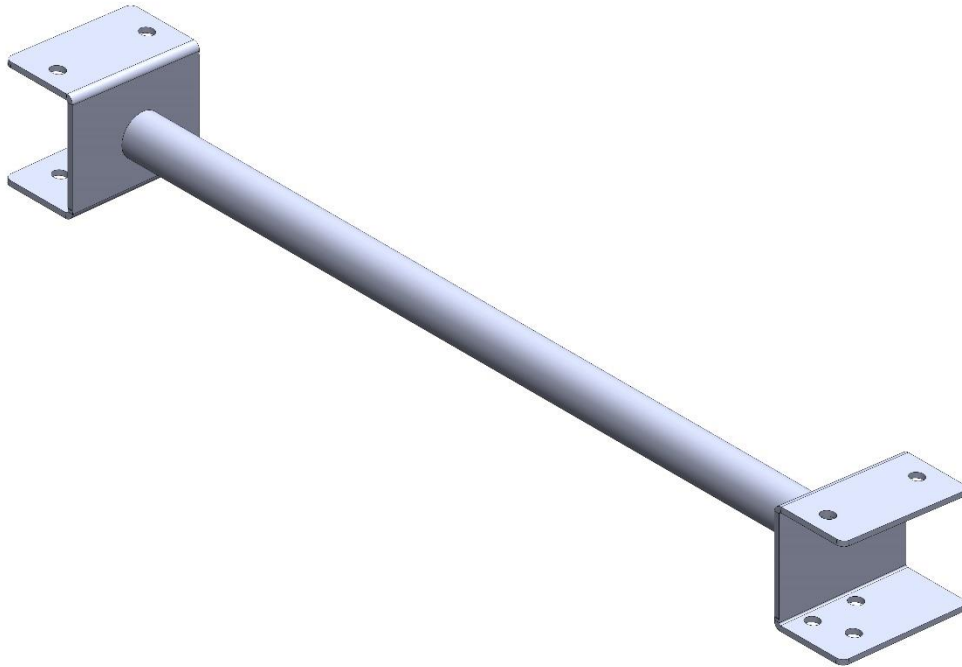
7/16 X 1.25 GRADE 8 BOLT USS (QTY. 4)

7/16 GRADE 8 NYLOC NUT USS (QTY. 4)

3/8 GRADE 8 FLAT WASHER USS (QTY. 8)

PART# PBXM6372

DESCRIPTION: PANHARD BAR CROSSMEMBER; 63-72 C10



HARDWARE DESCRIPTION:

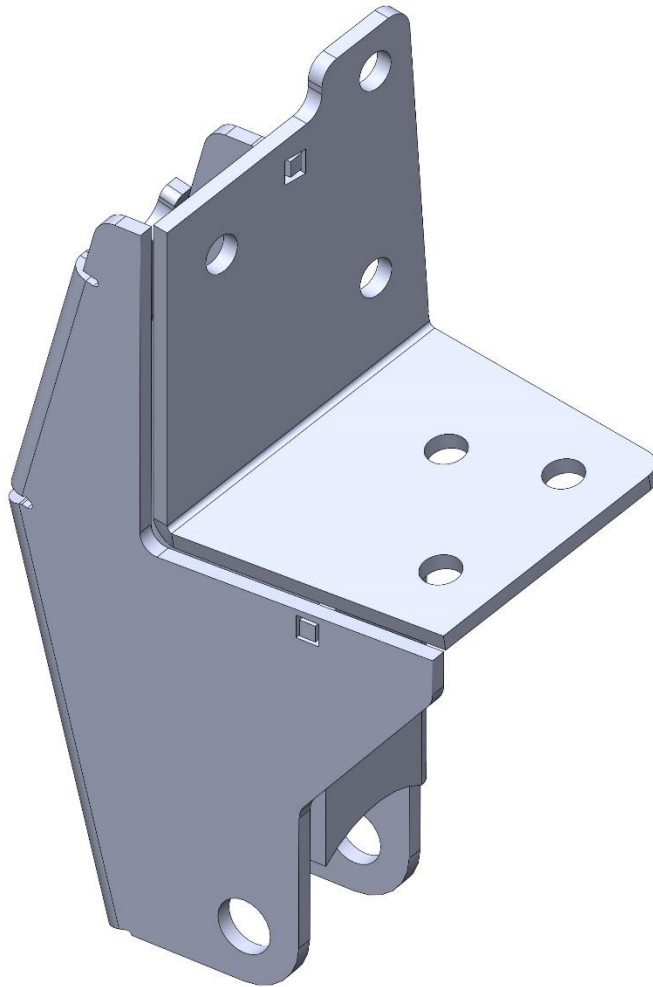
7/16 X 1.25 GRADE 8 BOLT USS (QTY. 9)

7/16 GRADE 8 NYLOC NUT USS (QTY. 9)

3/8 GRADE 8 FLAT WASHER USS (QTY. 18)

PART# PBMB6372-S2

DESCRIPTION: PANHARD BAR MOUNTING BRACKET; 63-72; STAGE 2



HARDWARE DESCRIPTION:

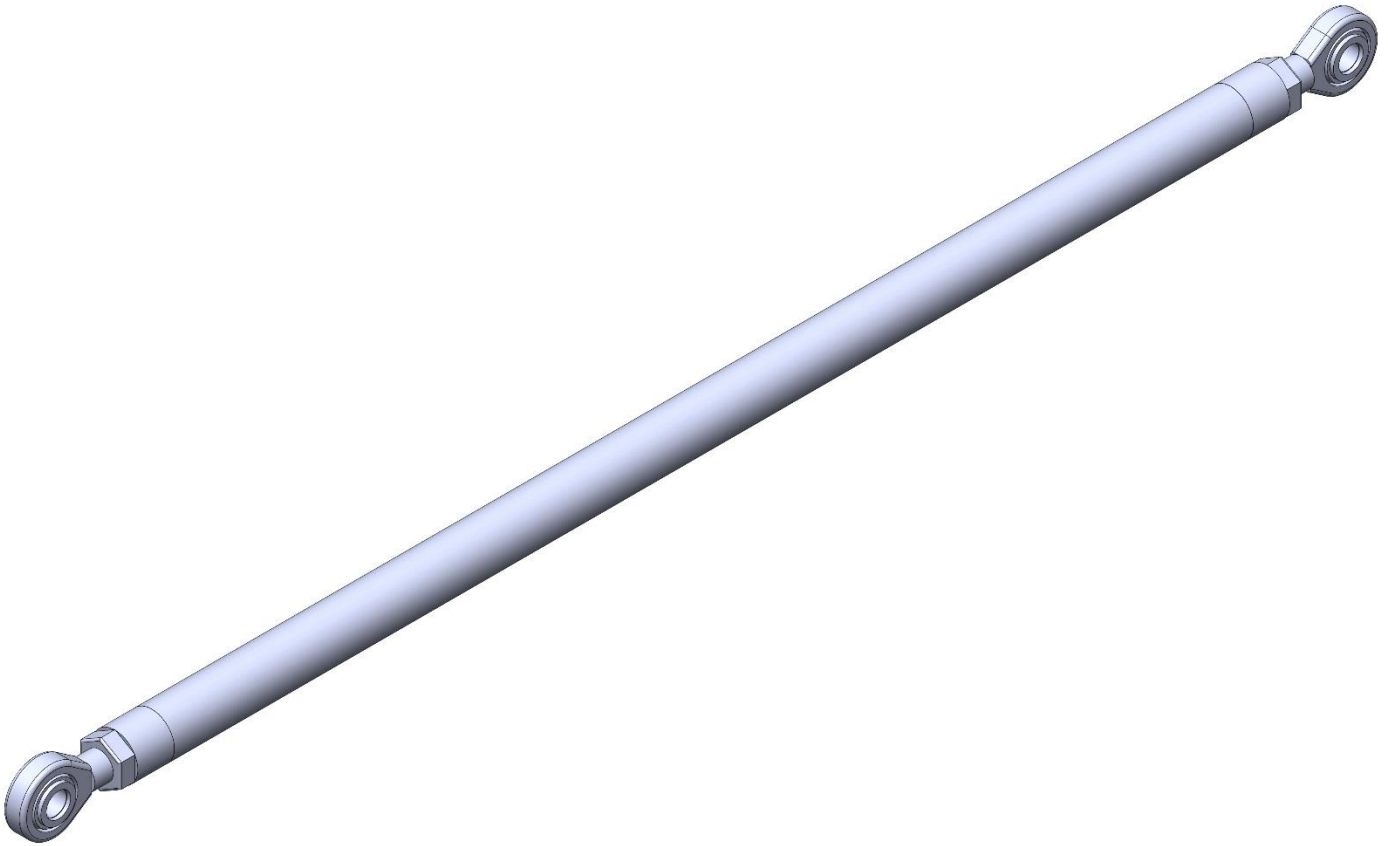
7/16 X 1.25 GRADE 8 BOLT USS (QTY. 6)

7/16 GRADE 8 NYLOC NUT USS (QTY. 6)

3/8 GRADE 8 FLAT WASHER USS (QTY. 12)

PART# PHB315

DESCRIPTION: PANHARD BAR 31.5 INCHES OVERALL



HARDWARE DESCRIPTION:

5/8 X 3.25 GRADE 8 BOLT USS (QTY. 2)

5/8 GRADE 8 NYLOC NUT USS (QTY. 2)

5/8 GRADE 8 FLAT WASHER SAE (QTY. 4)

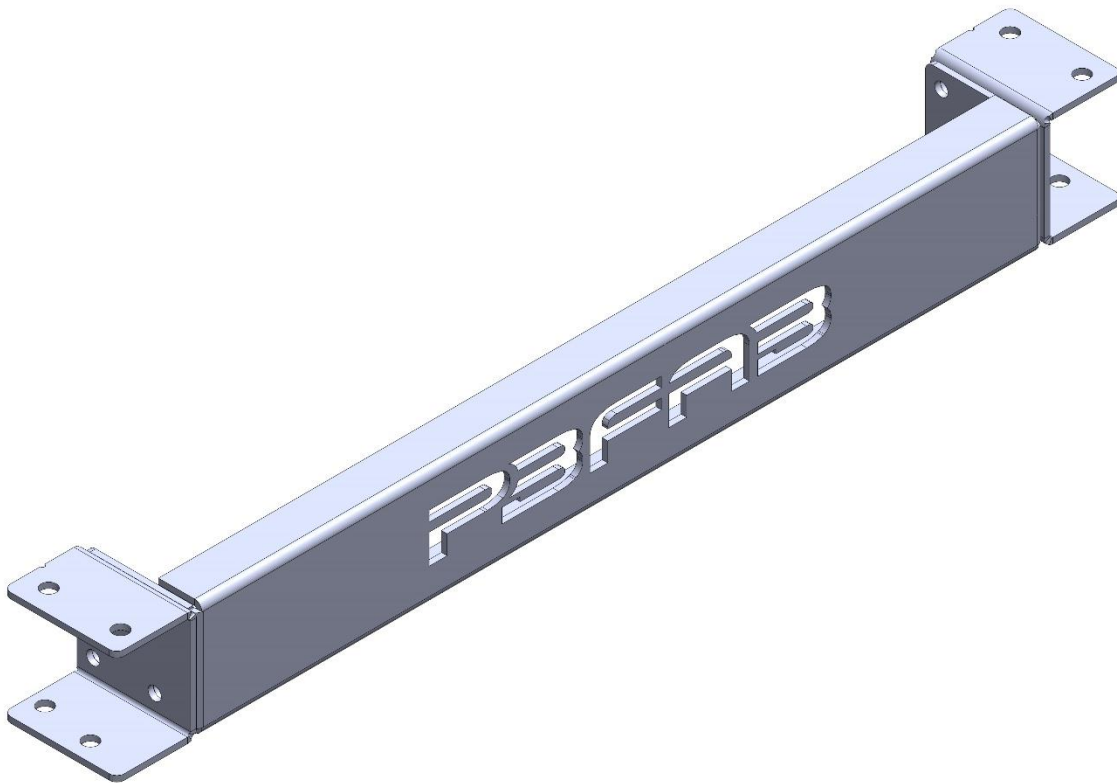
CS10 PHB CONE SPACER (GOLD ZINC) (QTY. 4)

3/4 X 5/8 LH ROD END WITH JAM NUT (QTY.1)

3/4 X 5/8 RH ROD END WITH JAM NUT (QTY. 1)

PART# RFXM6372-PBFAB

DESCRIPTION: REAR FRAME CROSSMEMBER 63-72 C10 PBFAB LOGO



HARDWARE DESCRIPTION:

7/16 X 1.25 GRADE 8 BOLT USS (QTY. 16)

7/16 GRADE 8 NYLOC NUT USS (QTY. 16)

3/8 GRADE 8 FLAT WASHER USS (QTY. 32)

PART# DOM2600-KIT

DESCRIPTION: AIRLIFT DOMINATOR 2600 KIT



HARDWARE DESCRIPTION:

3/8 X .75 GRADE 8 BOLT USS (QTY. 4)

3/8 GRADE 8 FLAT WASHER USS (QTY. 4)

3/8 GRADE 8 LOCK WASHER USS (QTY. 4)

PART# 1924426-KIT-4L

DESCRIPTION: PB SHOCK KIT



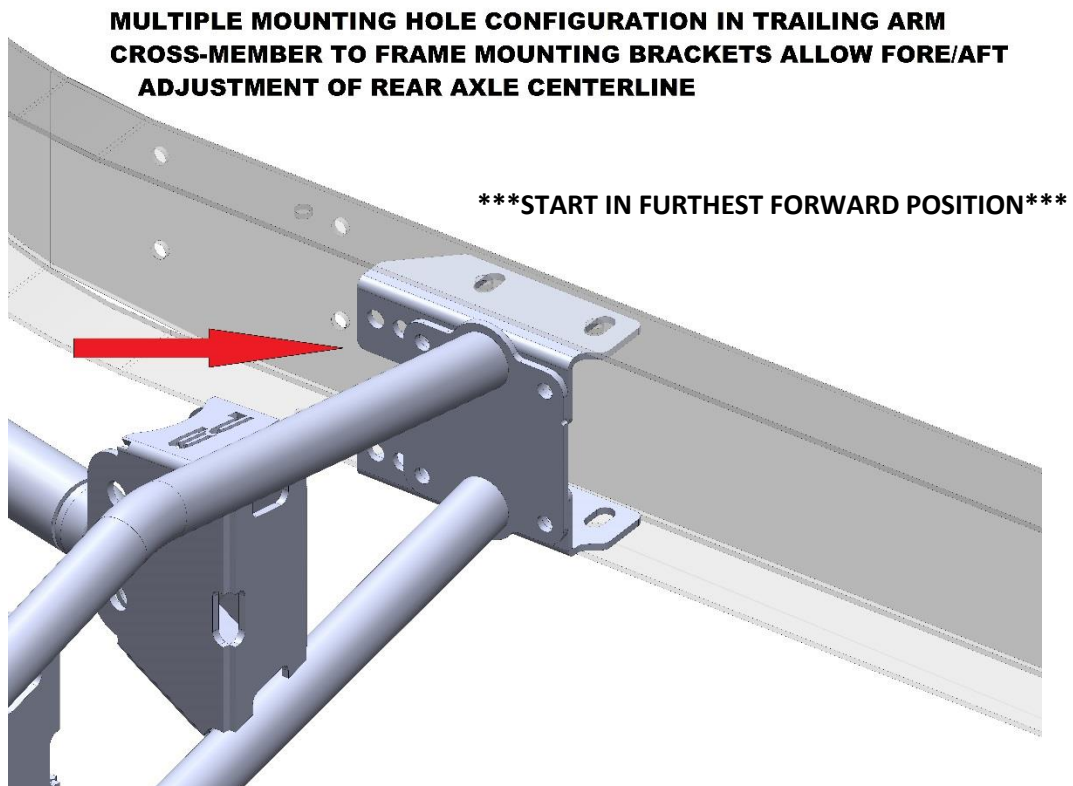
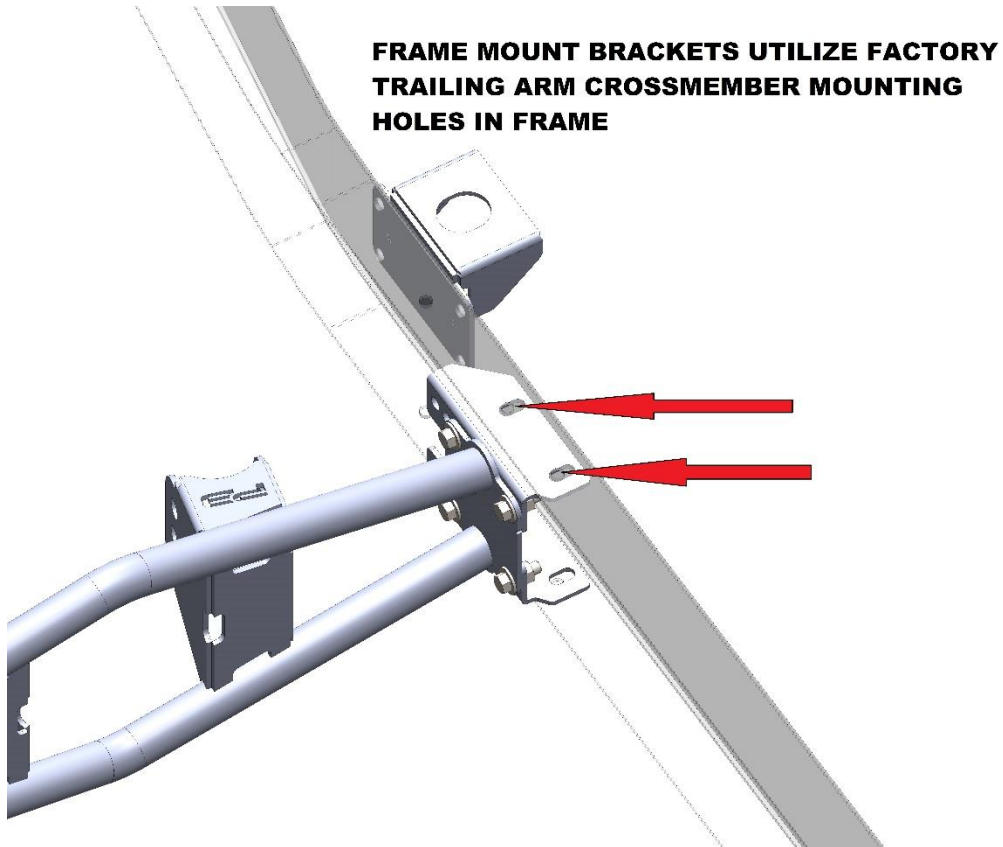
HARDWARE DESCRIPTION:

KYB SHOCK PART# 344426 (QTY. 2)

SHOCK STUD KIT (QTY. 4)

TRAILING ARM CROSSMEMBER INSTALLATION

-USE SUPPLIED GRADE 8 HARDWARE TO INSTALL TRAILING ARM X-MEMBER; TORQUE TO 65 FT-LBS

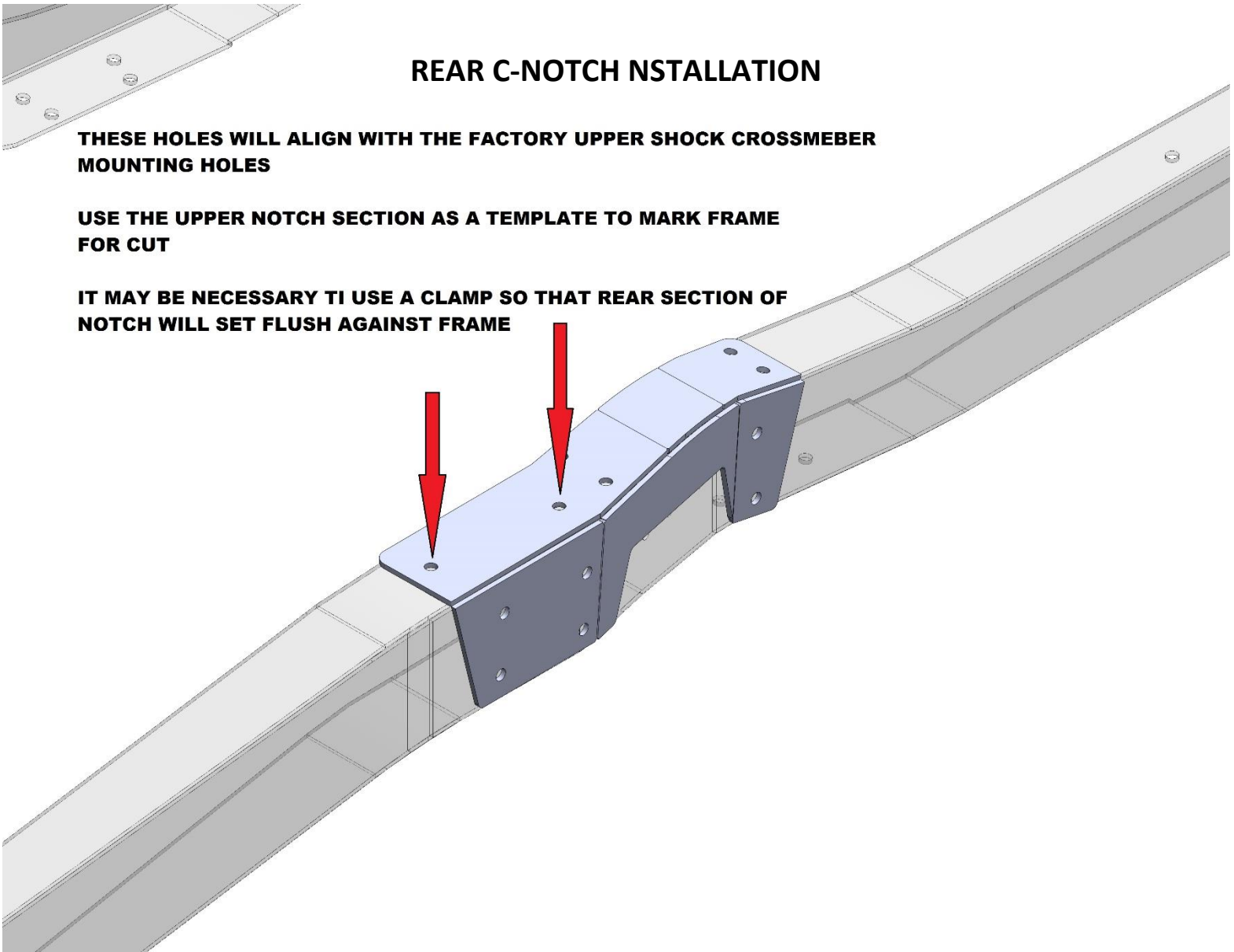


REAR C-NOTCH INSTALLATION

THESE HOLES WILL ALIGN WITH THE FACTORY UPPER SHOCK CROSSMEMBER MOUNTING HOLES

USE THE UPPER NOTCH SECTION AS A TEMPLATE TO MARK FRAME FOR CUT

IT MAY BE NECESSARY TO USE A CLAMP SO THAT REAR SECTION OF NOTCH WILL SET FLUSH AGAINST FRAME



-ONCE C-NOTCH IS LOCATED AND CLAMPED FLUSH TO THE FACTORY FRAME, MARK AND DRILL MOUNTING HOLES

-USE THE C-NOTCH AS A TEMPLATE TO MARK FACTORY FRAME FOR CUT

-AFTER FACTORY FRAME SECTION HAS BEEN REMOVED, INSTALL BOTTOM SIDE OF C-NOTCH

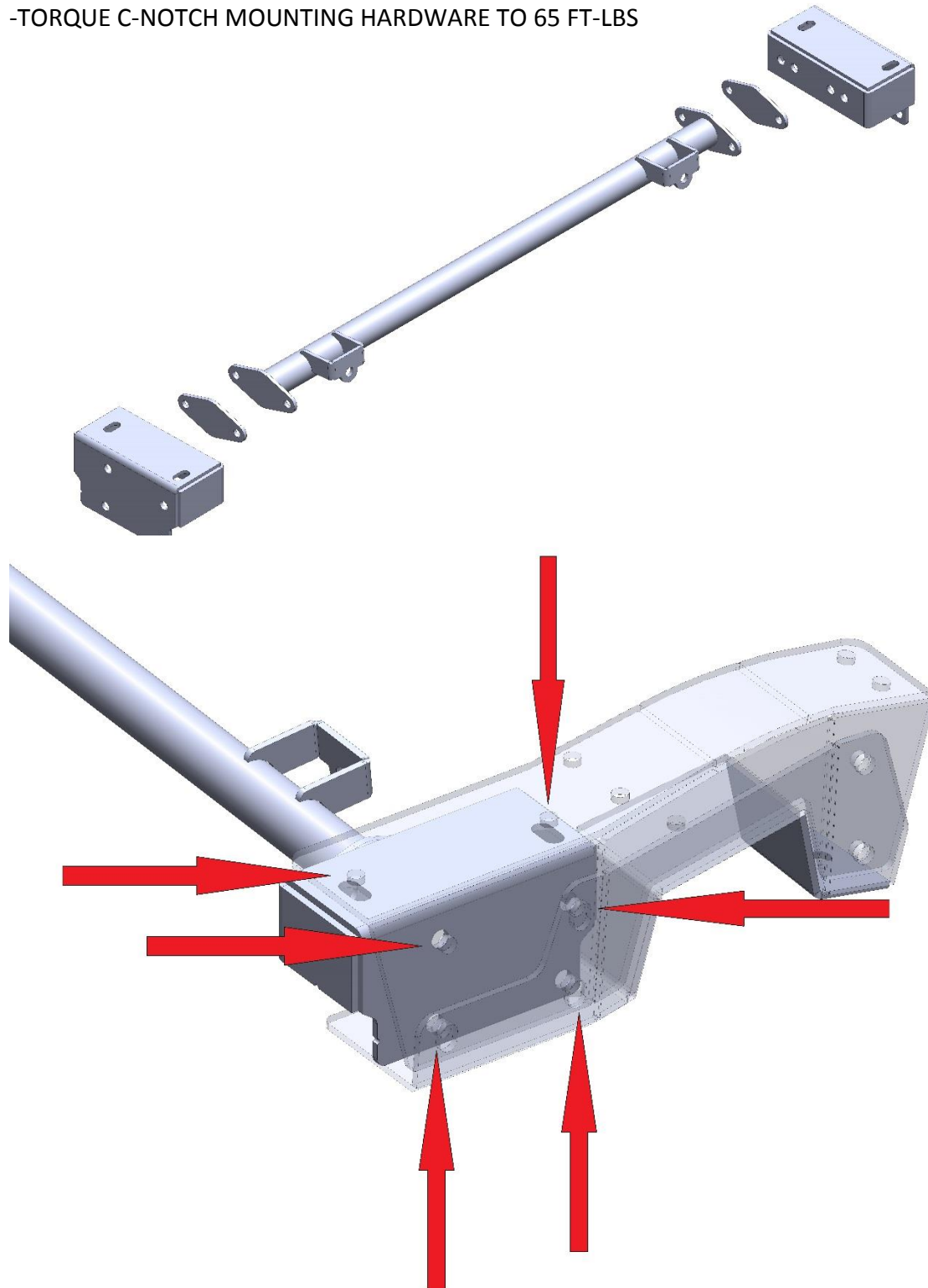
-USE SUPPLIED GRADE 8 HARDWARE TO INSTALL C-NOTCH; DO NOT FULLY TIGHTEN UNTIL UPPER SHOCK BAR INSTALLATION

UPPER SHOCK BAR INSTALLATION

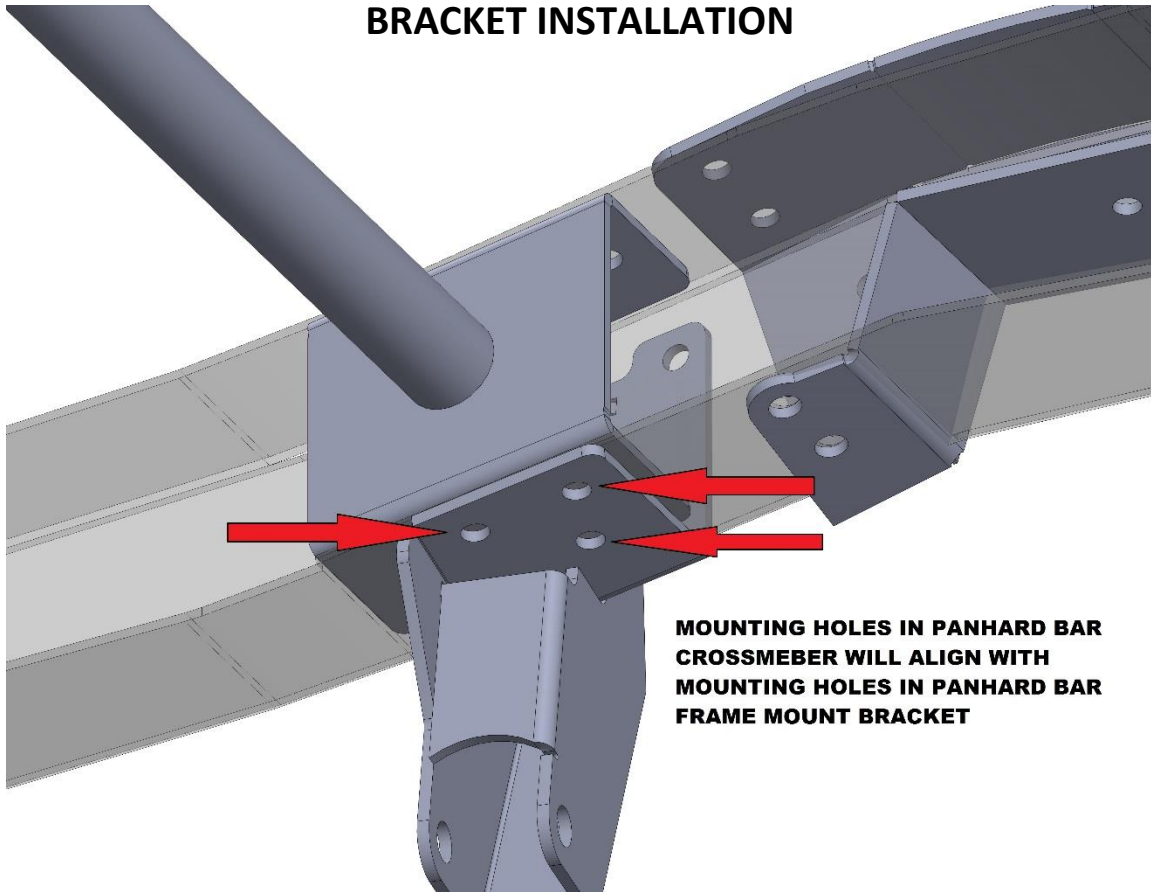
-UPPER SHOCK CROSSMEMBER TO FRAME MOUNTING BRACKET WILL UTILIZE C-NOTCH MOUNTING HARDWARE

-INSTALL UPPER SHOCK CROSSMEMBER USING SUPPLIED GRADE 8 HARDWARE; TORQUE TO 65 FT-LBS

-TORQUE C-NOTCH MOUNTING HARDWARE TO 65 FT-LBS



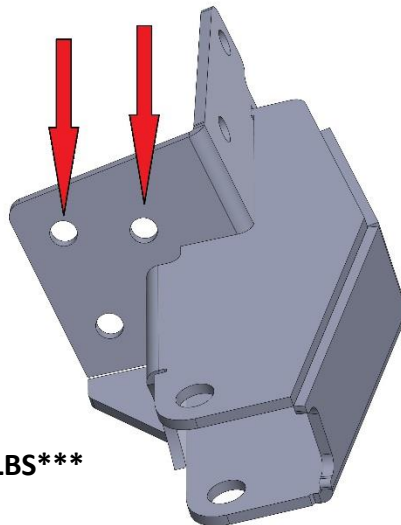
PANHARD BAR CROSSMEMBER/PANHARD TO FRAME MOUNTING BRACKET INSTALLATION



**MOUNTING HOLES IN PANHARD BAR
CROSSMEBER WILL ALIGN WITH
MOUNTING HOLES IN PANHARD BAR
FRAME MOUNT BRACKET**

**HOLES INDICATED IN IMAGE WILL ALIGN WITH HOLES IN FACTORY FRAME WHERE
ORIGINAL PANHARD BAR BRACKET ATTACHED.**

**ALL OTHER MOUNTING HOLES WILL NEED TO BE DRILLED.
USE SUPPLIED 7/16 GRADE 8 MOUNTING HARDWARE.**

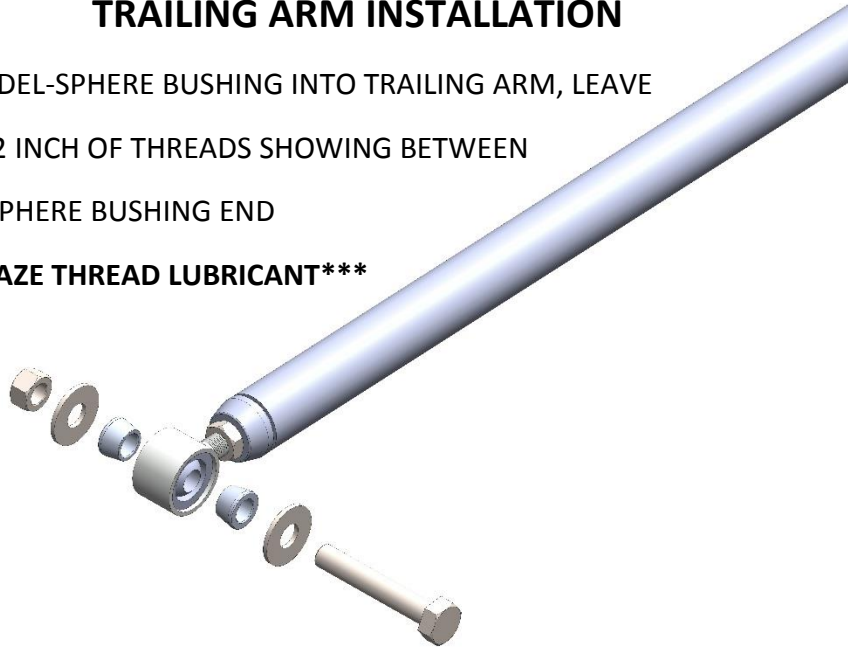


*****TORQUE HARDWARE TO 65 FT-LBS*****

TRAILING ARM INSTALLATION

-WHEN INSTALLING DEL-SPHERE BUSHING INTO TRAILING ARM, LEAVE APPROXIMATELY 1/2 INCH OF THREADS SHOWING BETWEEN JAM NUT AND DEL SPHERE BUSHING END

*****USE AN ANTI-SEAZE THREAD LUBRICANT*****

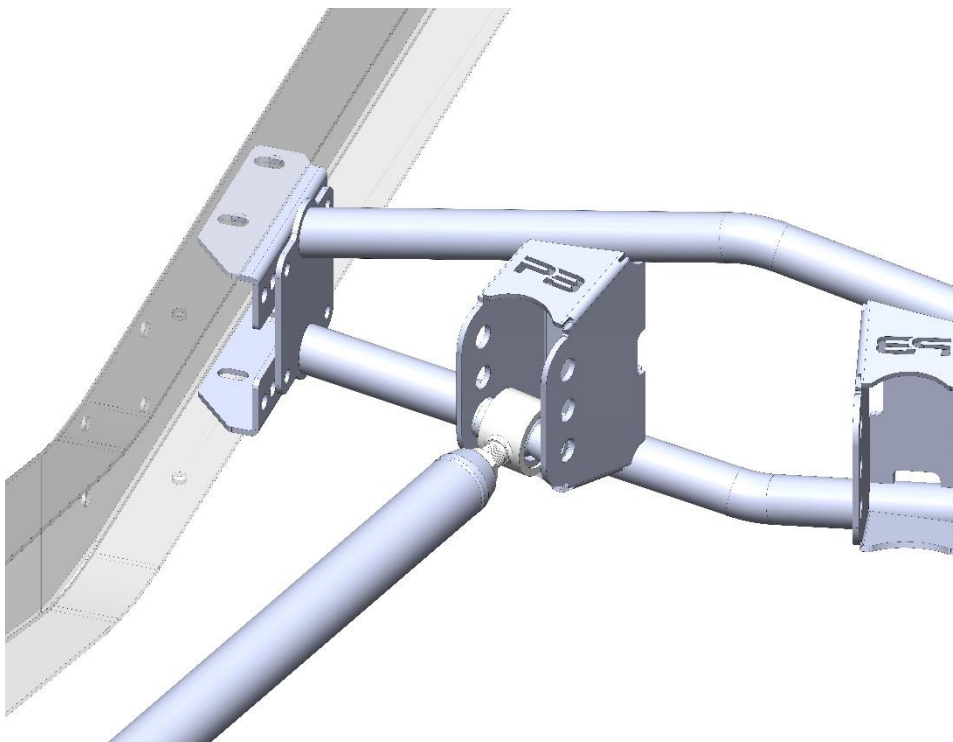


-TRAILING ARM HARDWARE KIT INCLUDES TWO SETS OF NUTS; USE THE NYLOC NUT FOR FINAL ASSEMBLY AND THE RAW NUT FOR MOCK UP

-START WITH TRAILING ARM MOUNTED IN LOWEST HOLE ON TRAILING ARM X-MEMBER
*****SEE IMAGE BELOW*****

-TORQUE DEL SPHERE MOUNTING BOLT TO TRAILING ARM X-MEMBER TO 75 FT-LBS

-TRAILING ARM U-BOLT NUTS REQUIRE PATIENCE AND DEPENDING ON WRENCH... MAYBE SOME MODIFICATIONS TO OPEN END; IT WILL BE IMPOSSIBLE TO GET A TORQUE WRENCH ON THE U-BOLT NUT SO GET IT AS TIGHT AS YOU CAN 😊

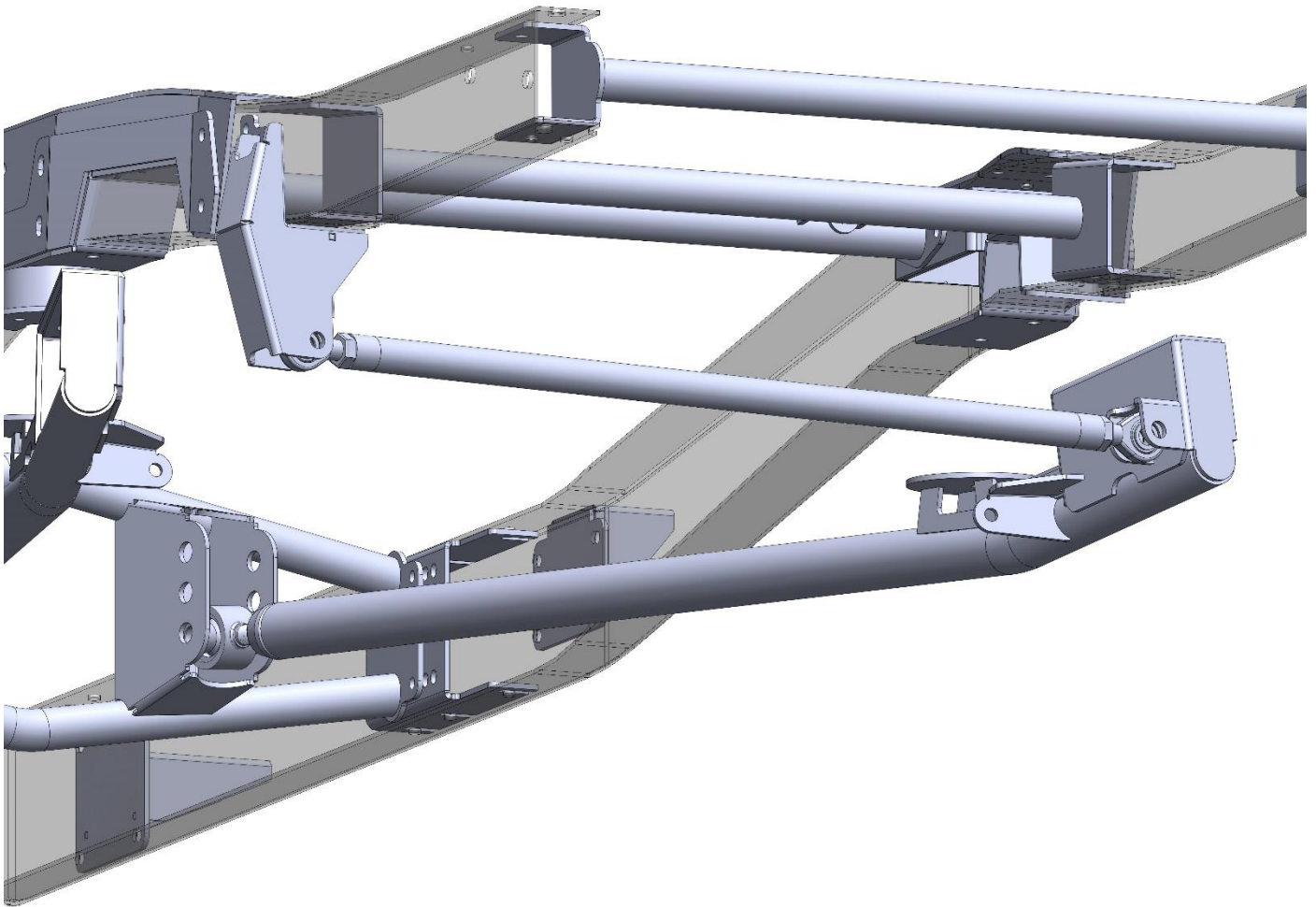


PANHARD BAR INSTALLATION

-INSTALL PANHARD BAR USING SUPPLIED GRADE 8 HARDWARE TORQUE 5/8 BOLTS TO 75 FT-LBS

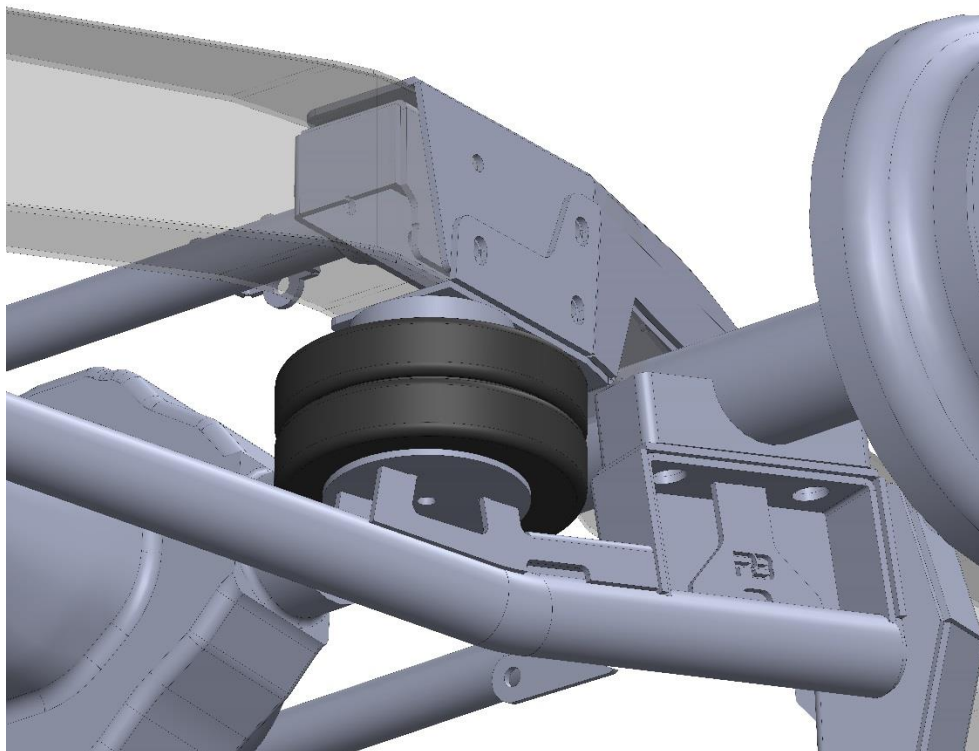
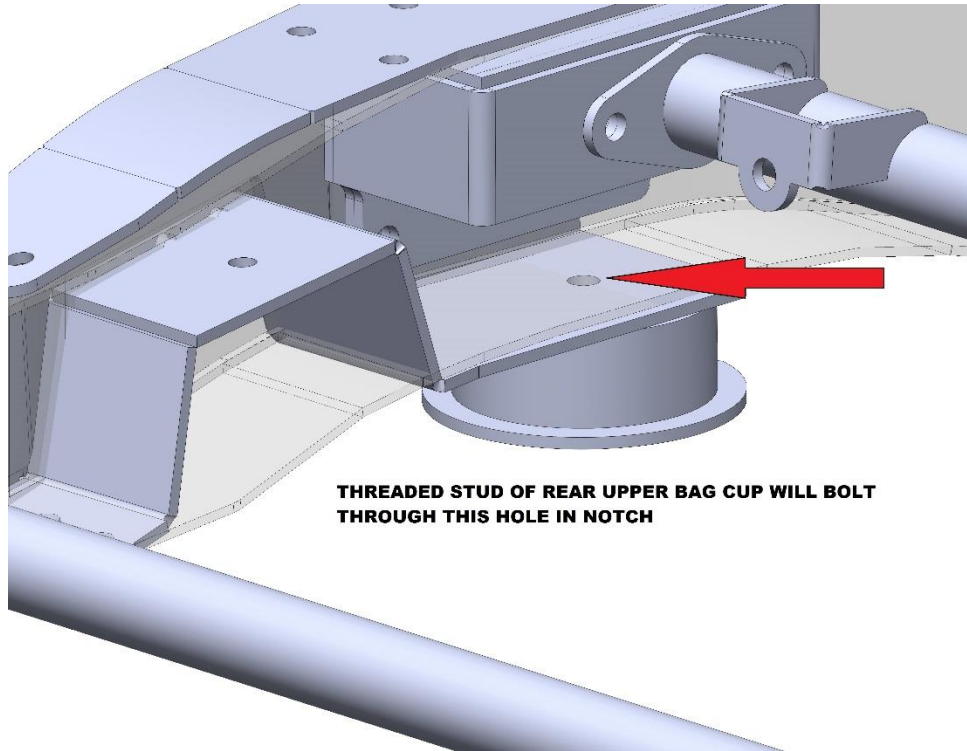
*****USE AN ANTI-SEIZE THREAD LUBRICANT*****

*****NOTE ONE ROD END IS RH THREAD AND ONE IS LH THREAD*****



AIRBAG INSTALLATION

-INSTALL AIRBAG USING SUPPLIED GRADE 8 HARDWARE



SHOCK INSTALLATION

-IMAGE OF SHOCK KIT PART#1924426-KIT-4L INSTALLED

