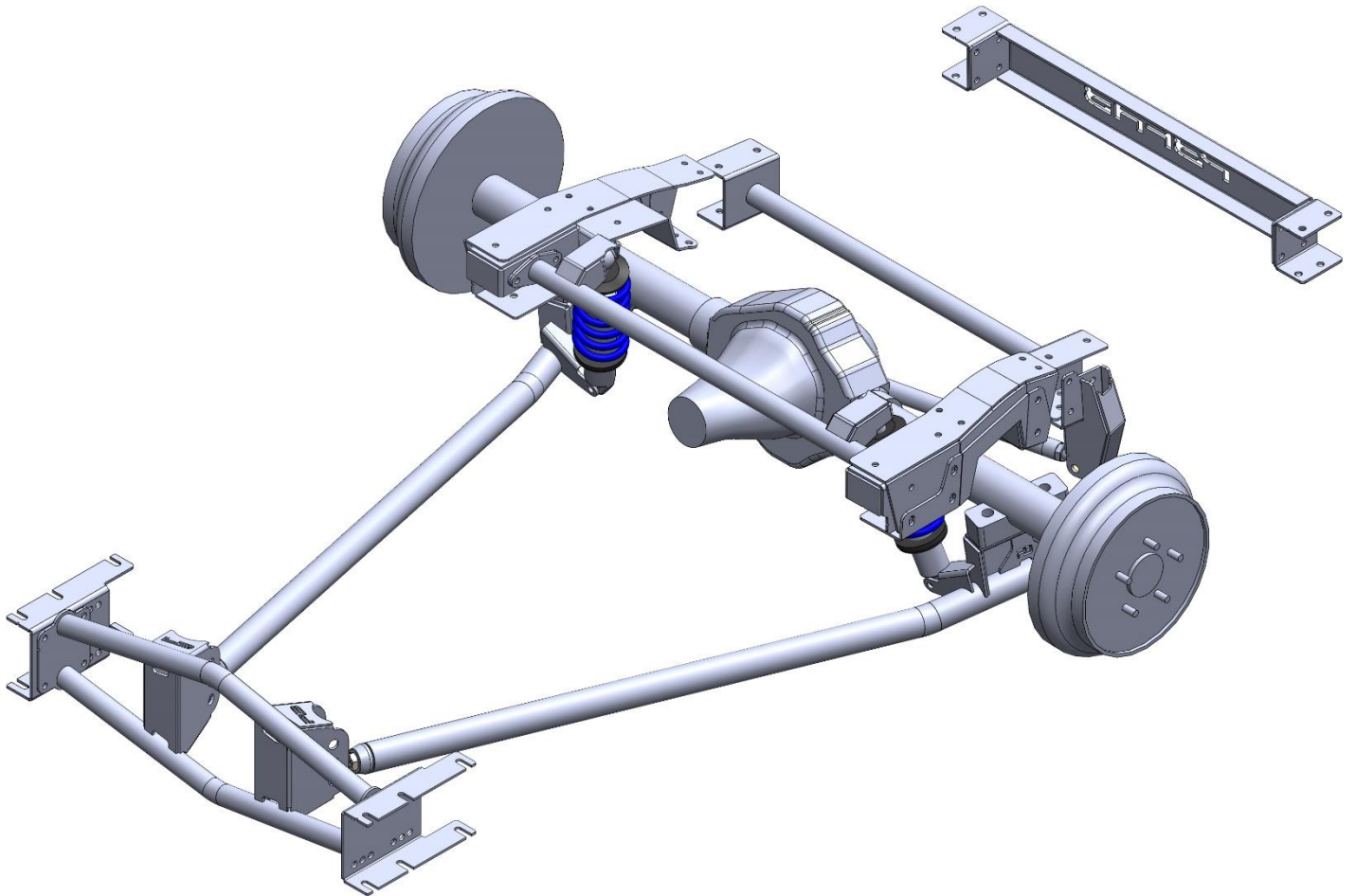


# **DROPMEMBER LEVEL 1 REAR COILOVER INSTALLATION GUIDE**

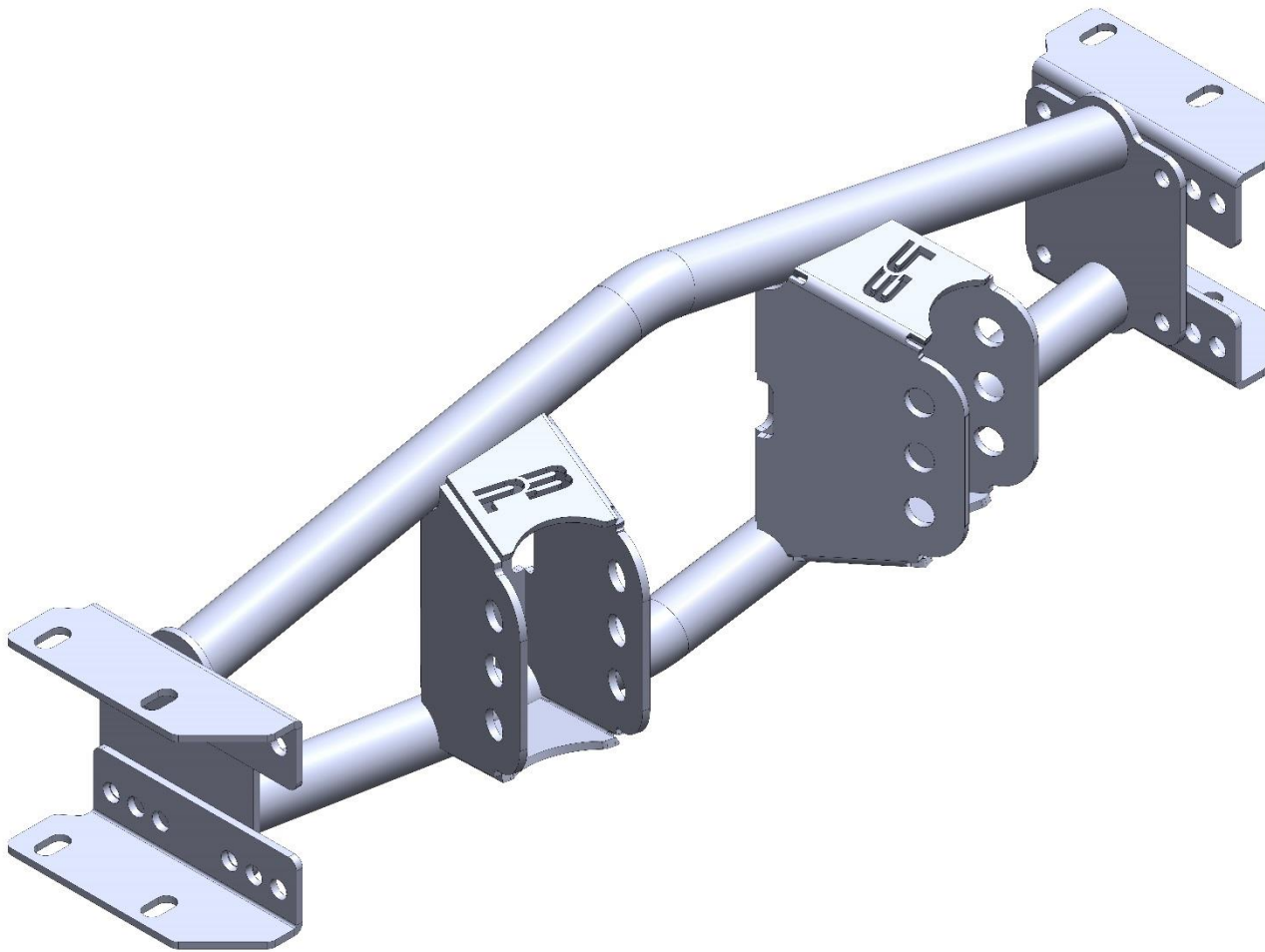


**3/28/2020**

**SECTION 1: INDIVIDUAL PARTS IDENTIFICATION WITH HARDWARE DESCRIPTIONS**

**PART#** TAXM6372-1P

**DESCRIPTION:** TRAILING ARM CROSSMEMBER 63-72 ONE PIECE DRIVE SHAFT SPECIFIC



**HARDWARE DESCRIPTION:**

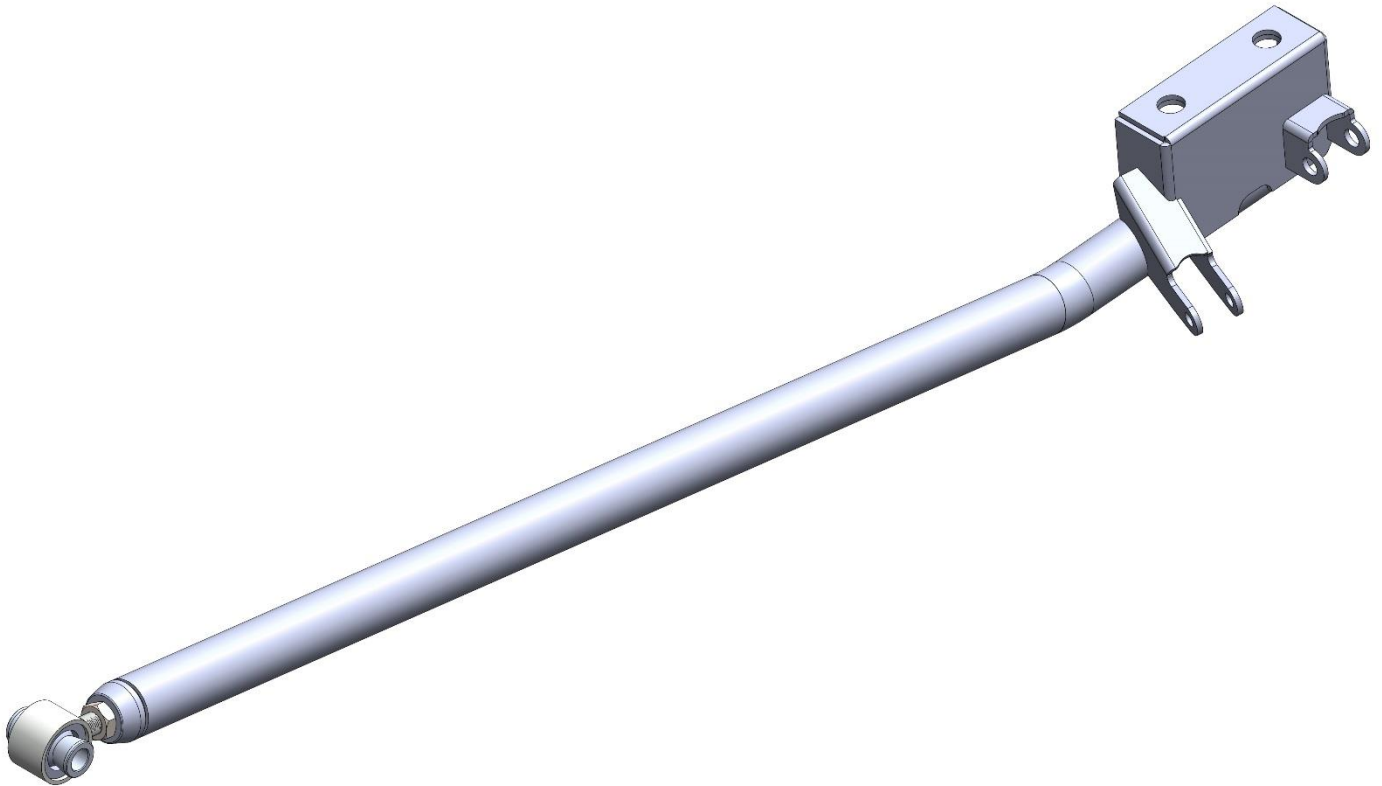
7/16 X 1.25 GRADE 8 BOLT USS (QTY. 20)

3/8 GRADE 8 FLAT WASHER USS (QTY. 40)

7/16 GRADE 8 NYLOC NUT USS (QTY. 20)

**PART# TA-3-IC-PHB-S2**

**DESCRIPTION:** TRAILING ARM; 3 INCH DROP; INBOARD COIL OVER; PANHARD BAR SPECIFIC (PASSENGER SIDE SHOWN)



**HARDWARE DESCRIPTION:**

3/4 X 4.5 GRADE 8 BOLT SAE (FINE THREAD) (QTY. 2)

3/4 GRADE 8 FLAT WASHER (QTY. 4)

3/4 GRADE 8 NYLOC NUT SAE (FINE THREAD) (QTY. 6)

3/4 DEL SPHERE JOINT (QTY. 2)

3/4 ALUMINUM CONE SPACER (QTY. 4)

3/4 U-BOLT WITH NUTS AND WASHERS (PAIR)

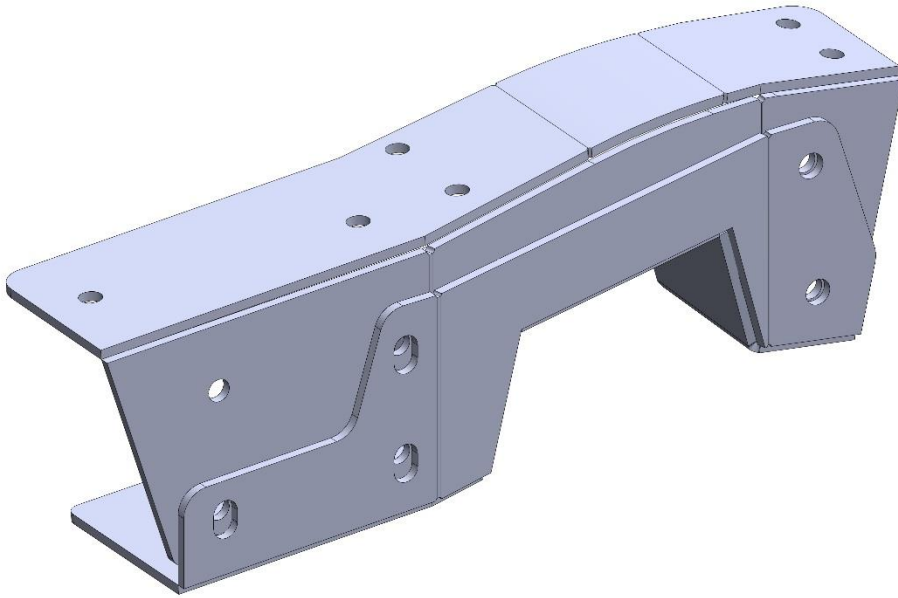
1/2 X 2.5 GRADE 8 BOLT USS (QTY. 2)

1/2 GRADE 8 NYLOC NUT USS (QTY. 2)

7/16 GRADE 8 FLAT WASHER USS (QTY. 4)

**PART#** RN6372-S2

**DESCRIPTION:** REAR NOTCH; 63-72 C10; STAGE 2 SPECIFIC



**HARDWARE DESCRIPTION:**

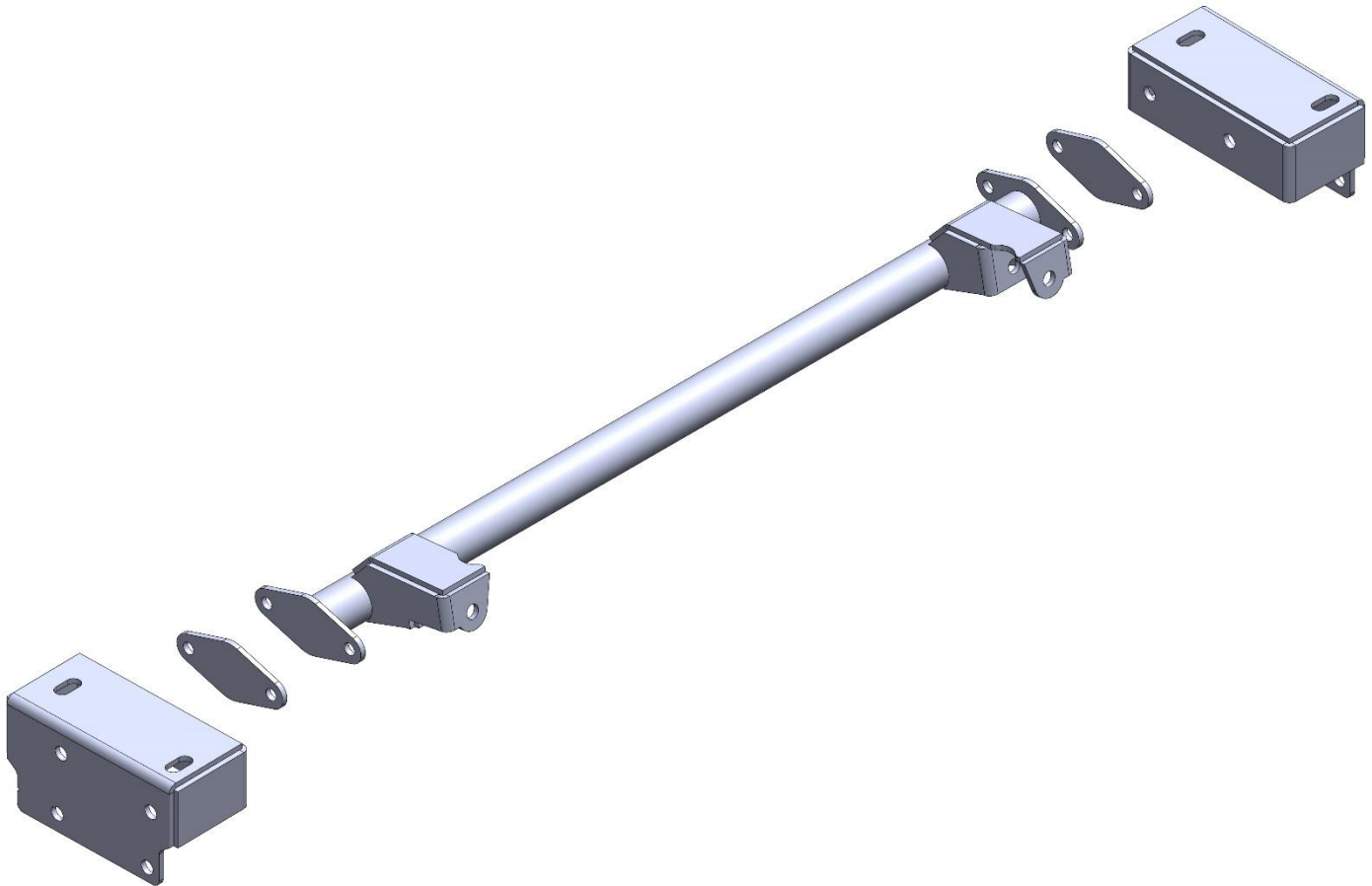
7/16 X 1.25 GRADE 8 BOLT USS (QTY. 32)

7/16 GRADE 8 NYLOC NUT USS (QTY. 32)

3/8 GRADE 8 FLAT WASHER USS (QTY. 64)

**PART#** USB6372-C

**DESCRIPTION:** UPPER SHOCK BAR 63-72; AIRBAG SPECIFIC



**HARDWARE DESCRIPTION:**

7/16 X 1.25 GRADE 8 BOLT USS (QTY. 4)

7/16 GRADE 8 NYLOC NUT USS (QTY. 4)

3/8 GRADE 8 FLAT WASHER USS (QTY. 8)

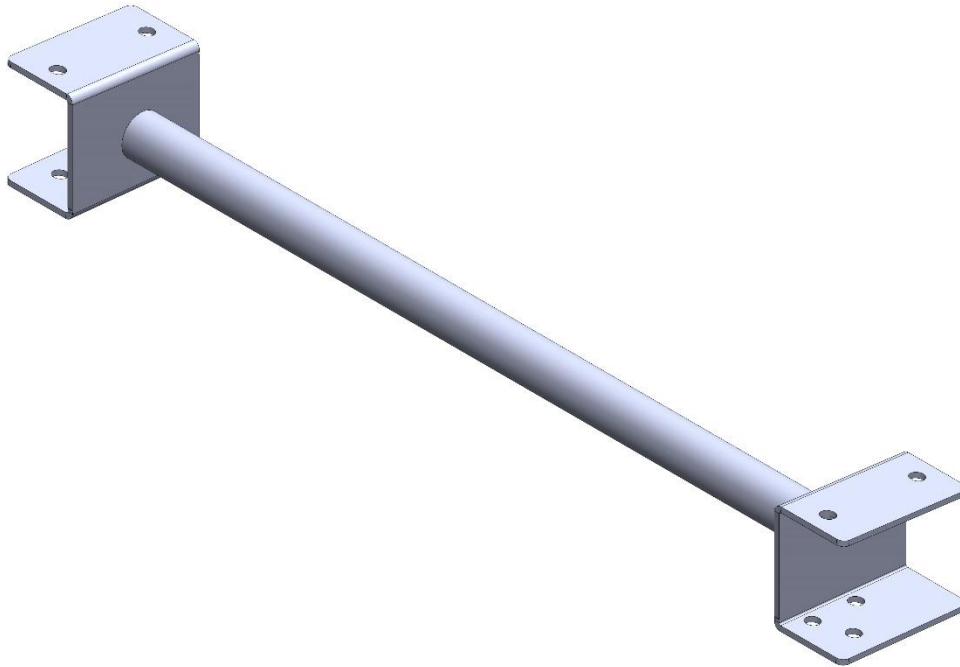
1/2 X 2.5 GRADE 8 BOLT USS (QTY. 2)

1/2 GRADE 8 NYLOC NUT USS (QTY. 2)

7/16 GRADE 8 FLAT WASHER USS (QTY. 4)

**PART#** PBXM6372

**DESCRIPTION:** PANHARD BAR CROSSMEMBER; 63-72 C10



**HARDWARE DESCRIPTION:**

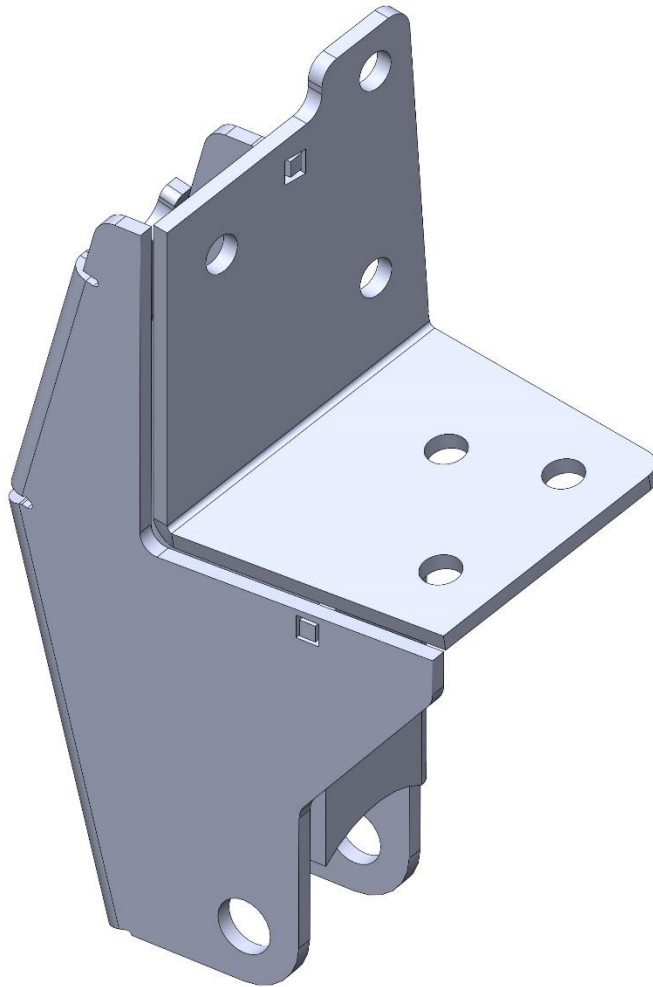
7/16 X 1.25 GRADE 8 BOLT USS (QTY. 9)

7/16 GRADE 8 NYLOC NUT USS (QTY. 9)

3/8 GRADE 8 FLAT WASHER USS (QTY. 18)

**PART#** PBMB6372-S2

**DESCRIPTION:** PANHARD BAR MOUNTING BRACKET; 63-72; STAGE 2



**HARDWARE DESCRIPTION:**

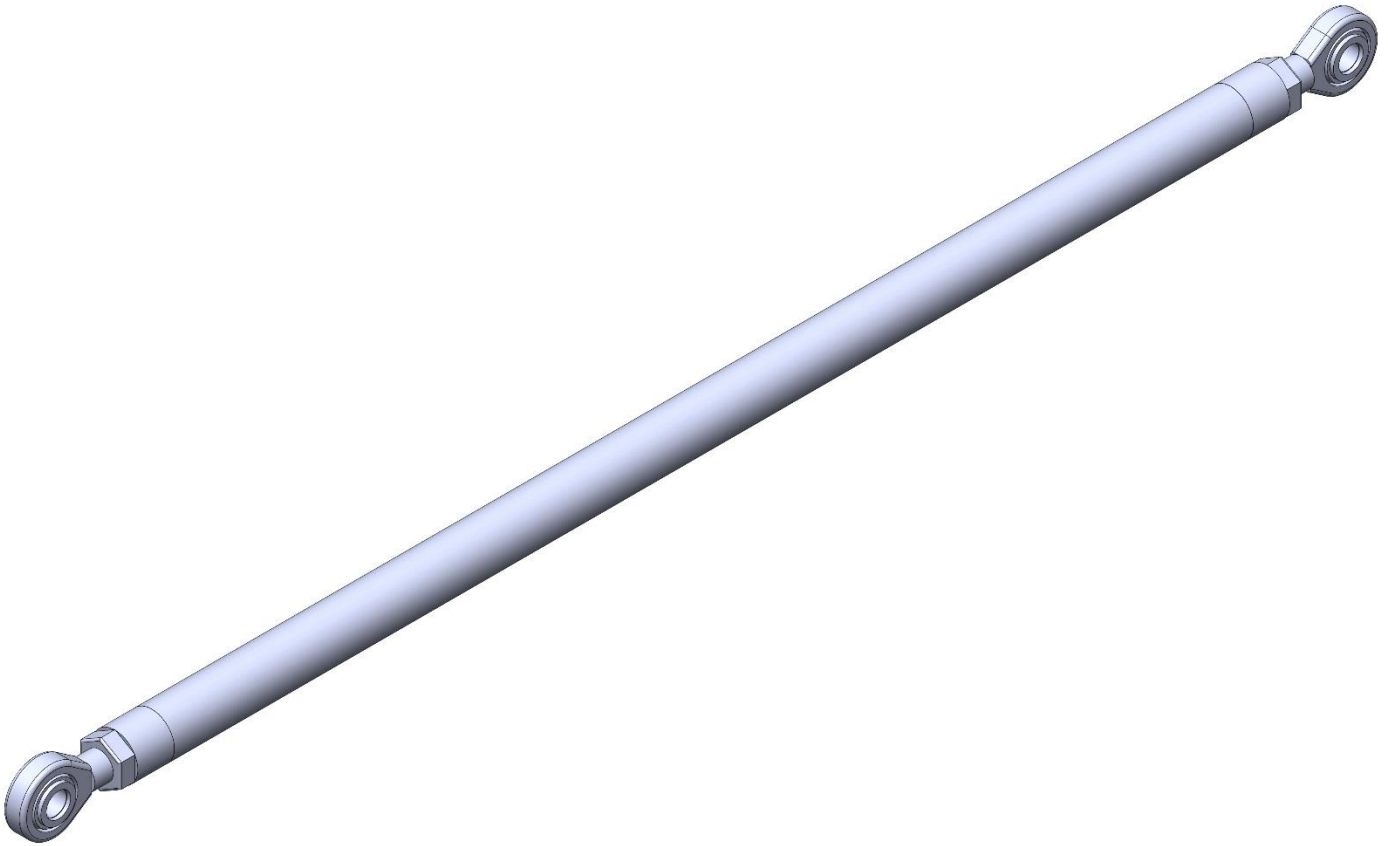
7/16 X 1.25 GRADE 8 BOLT USS (QTY. 6)

7/16 GRADE 8 NYLOC NUT USS (QTY. 6)

3/8 GRADE 8 FLAT WASHER USS (QTY. 12)

**PART# PHB315**

**DESCRIPTION:** PANHARD BAR 31.5 INCHES OVERALL



**HARDWARE DESCRIPTION:**

5/8 X 3.25 GRADE 8 BOLT USS (QTY. 2)

5/8 GRADE 8 NYLOC NUT USS (QTY. 2)

5/8 GRADE 8 FLAT WASHER SAE (QTY. 4)

CS10 PHB CONE SPACER (GOLD ZINC) (QTY. 4)

3/4 X 5/8 LH ROD END WITH JAM NUT (QTY.1)

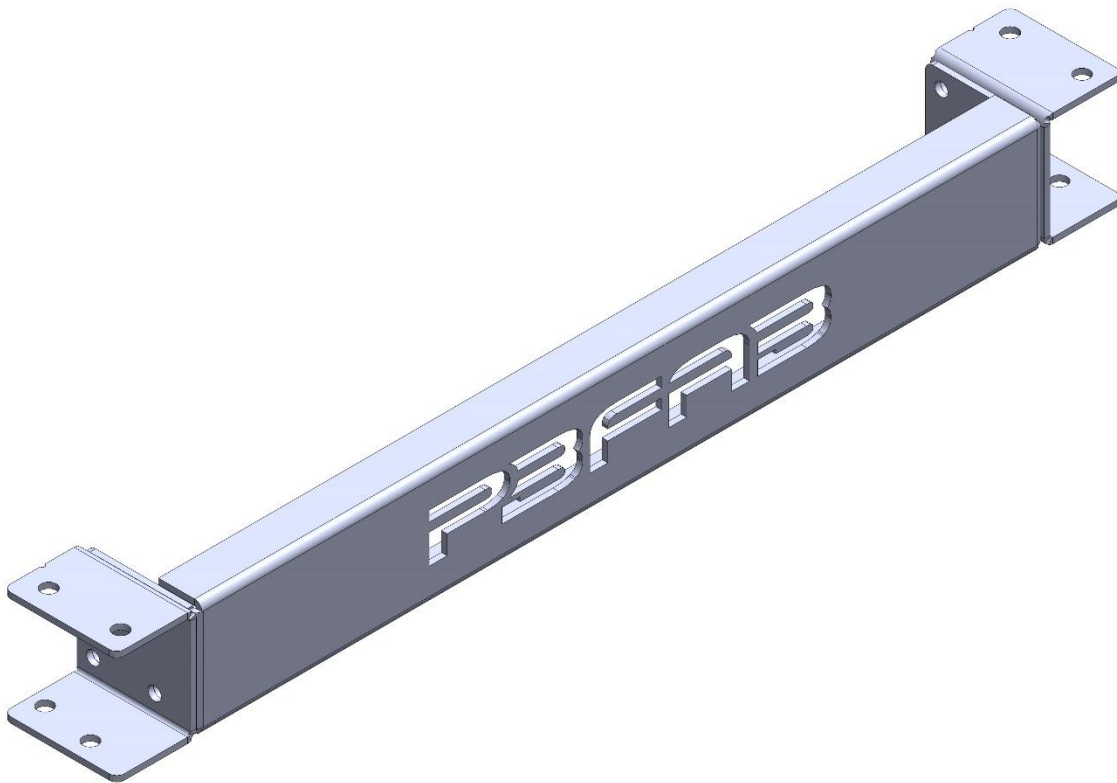
3/4 X 5/8 RH ROD END WITH JAM NUT (QTY. 1)



**PART#** RFXM6372-PBFAB

**DESCRIPTION:** REAR FRAME CROSSMEMBER 63-72 C10 PBFAB LOGO

**NOTES:** \*\*\*THIS PART IS AN OPTION\*\*\*



**HARDWARE DESCRIPTION:**

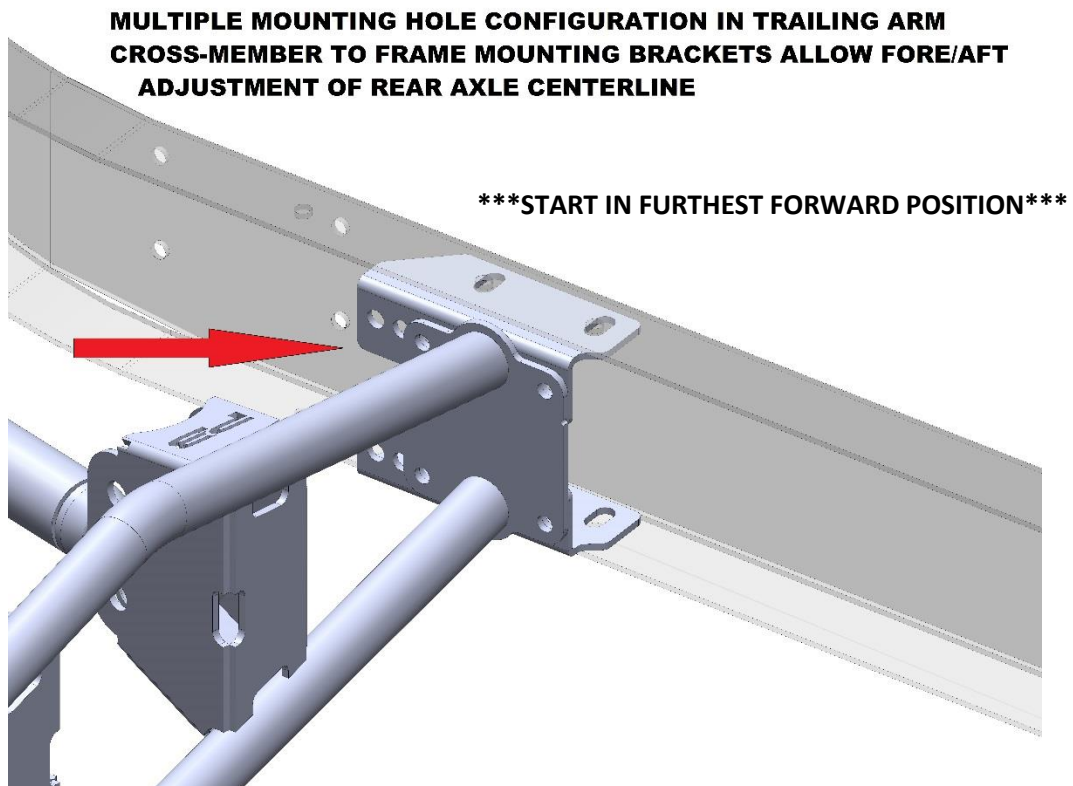
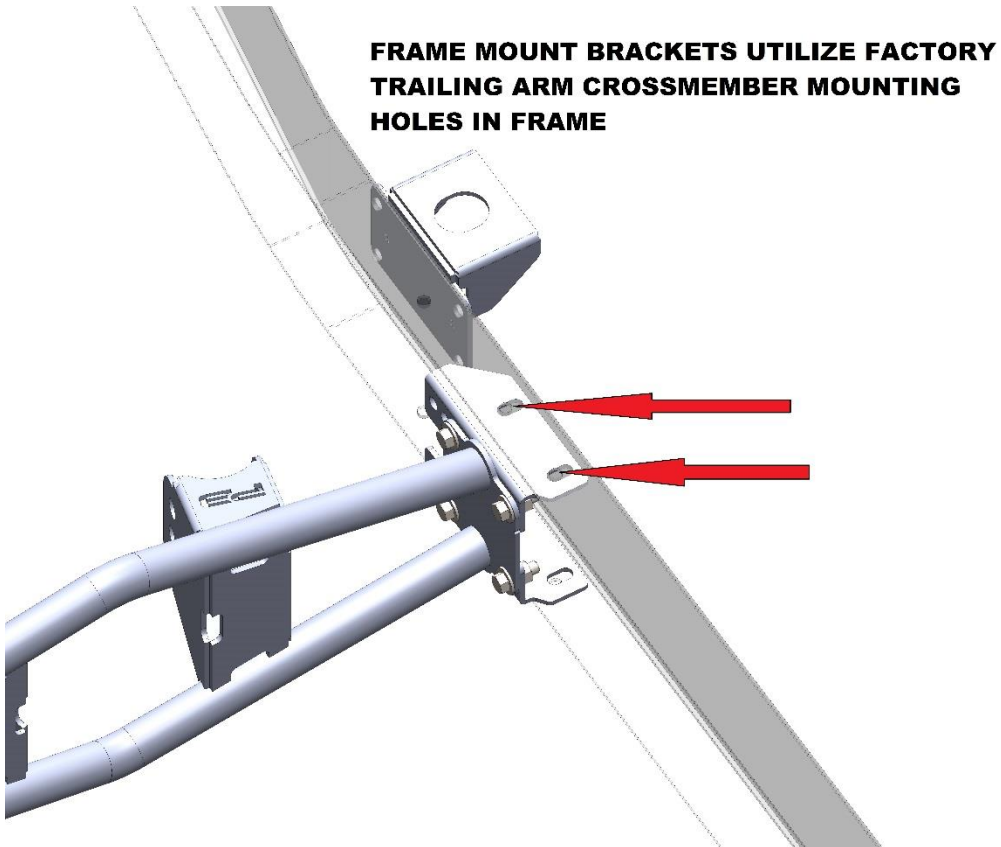
7/16 X 1.25 GRADE 8 BOLT USS (QTY. 16)

7/16 GRADE 8 NYLOC NUT USS (QTY. 16)

3/8 GRADE 8 FLAT WASHER USS (QTY. 32)

## TRAILING ARM CROSSMEMBER INSTALLATION

-USE SUPPLIED GRADE 8 HARDWARE TO INSTALL TRAILING ARM X-MEMBER; TORQUE TO 65 FT-LBS

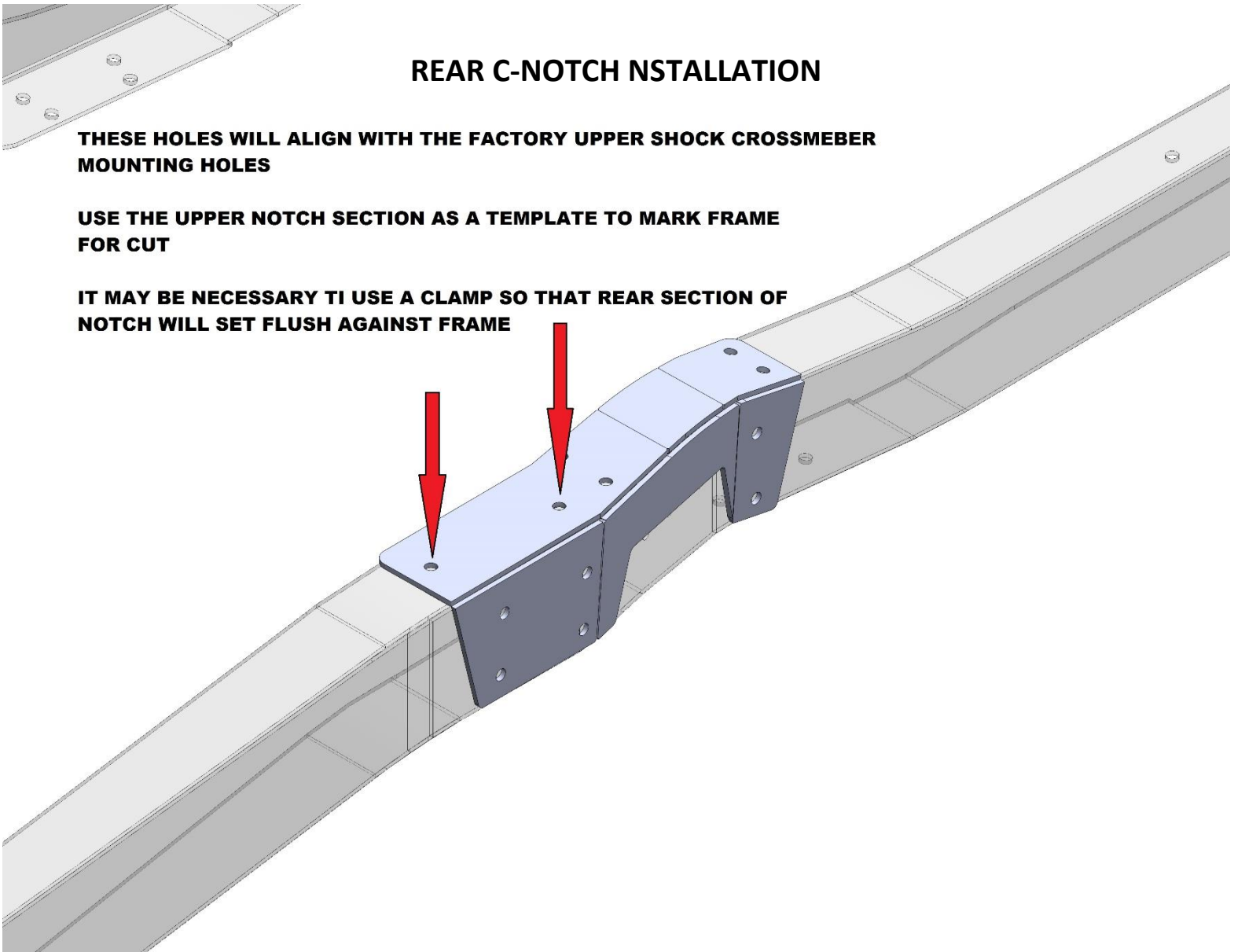


## REAR C-NOTCH INSTALLATION

**THESE HOLES WILL ALIGN WITH THE FACTORY UPPER SHOCK CROSSMEMBER MOUNTING HOLES**

**USE THE UPPER NOTCH SECTION AS A TEMPLATE TO MARK FRAME FOR CUT**

**IT MAY BE NECESSARY TO USE A CLAMP SO THAT REAR SECTION OF NOTCH WILL SET FLUSH AGAINST FRAME**



-ONCE C-NOTCH IS LOCATED AND CLAMPED FLUSH TO THE FACTORY FRAME, MARK AND DRILL MOUNTING HOLES

-USE THE C-NOTCH AS A TEMPLATE TO MARK FACTORY FRAME FOR CUT

-AFTER FACTORY FRAME SECTION HAS BEEN REMOVED, INSTALL BOTTOM SIDE OF C-NOTCH

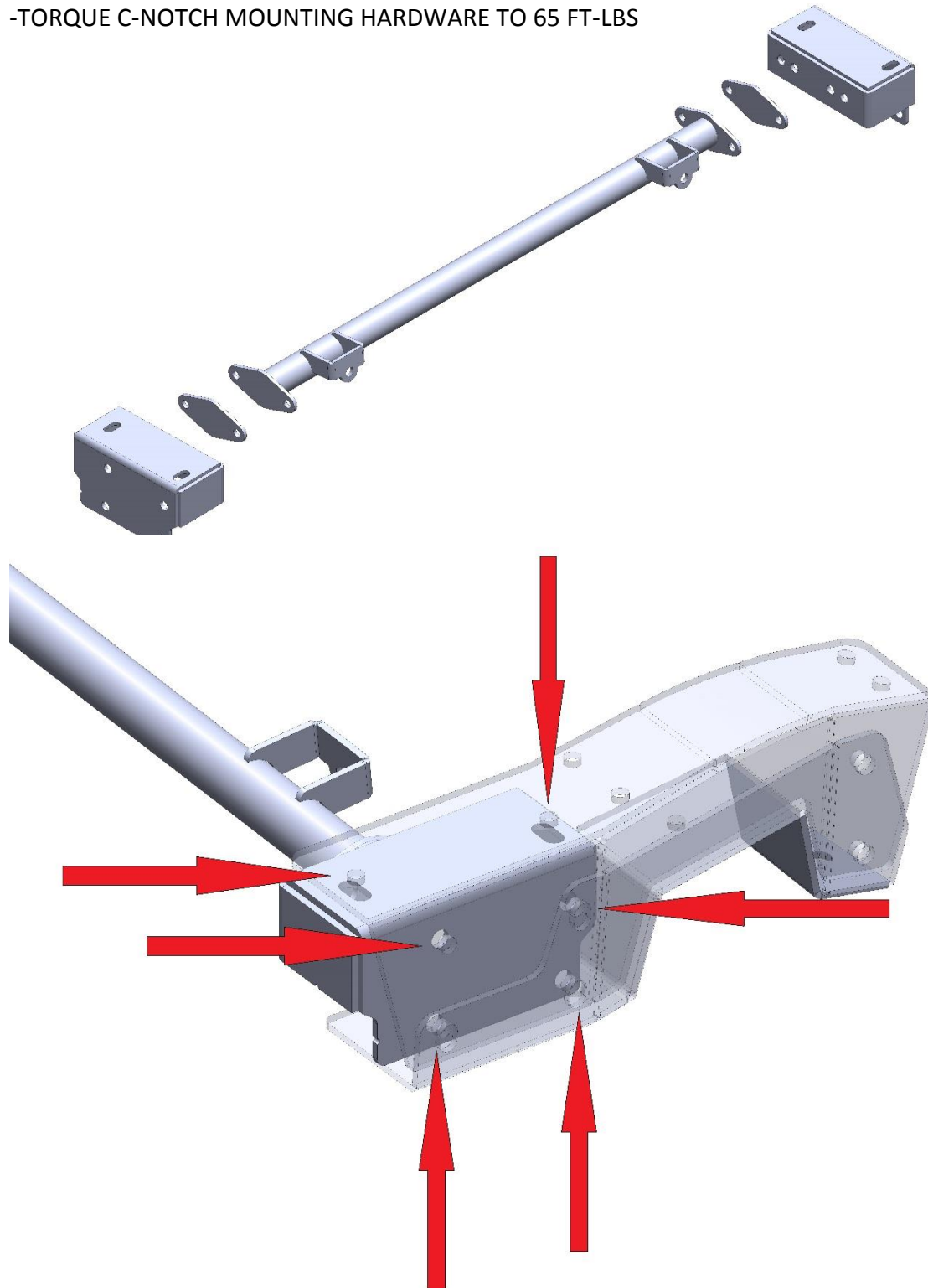
-USE SUPPLIED GRADE 8 HARDWARE TO INSTALL C-NOTCH; DO NOT FULLY TIGHTEN UNTIL UPPER SHOCK BAR INSTALLATION

## UPPER SHOCK BAR INSTALLATION

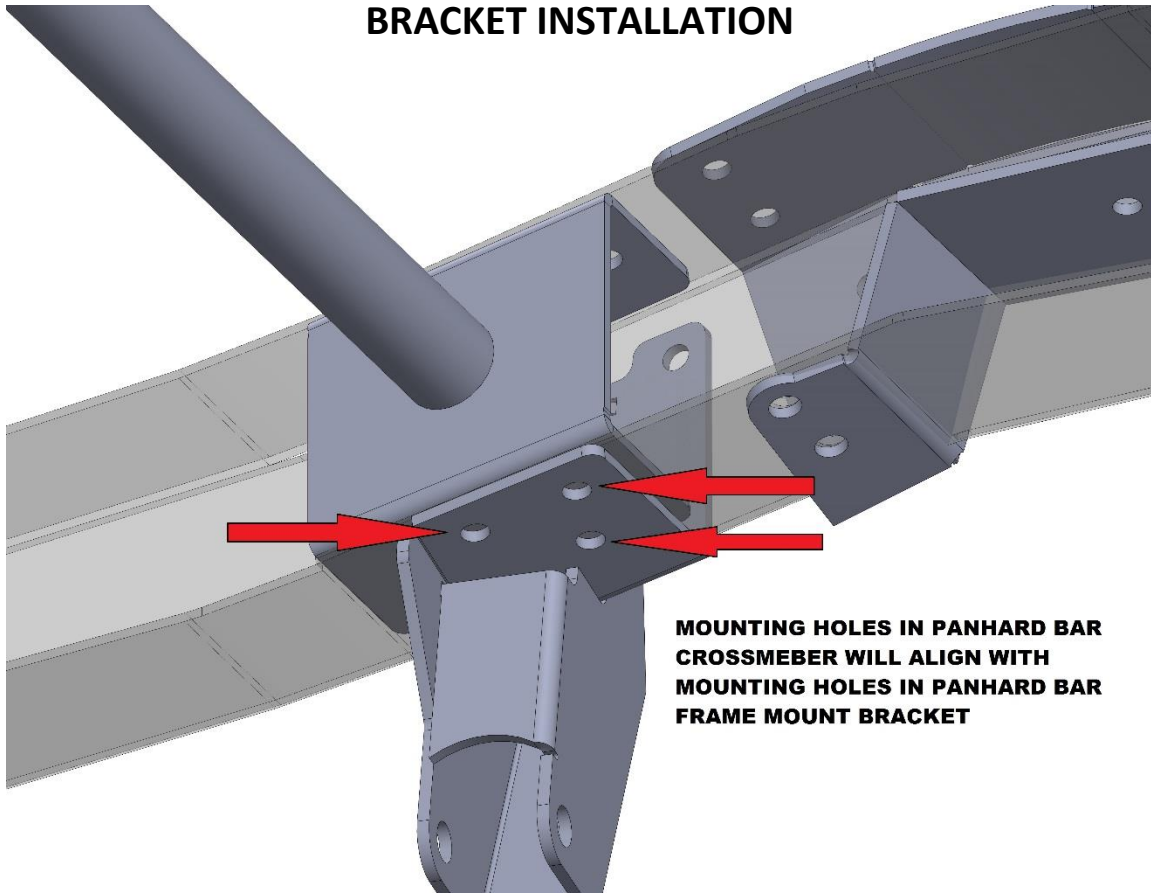
-UPPER SHOCK CROSSMEMBER TO FRAME MOUNTING BRACKET WILL UTILIZE C-NOTCH MOUNTING HARDWARE

-INSTALL UPPER SHOCK CROSSMEMBER USING SUPPLIED GRADE 8 HARDWARE; TORQUE TO 65 FT-LBS

-TORQUE C-NOTCH MOUNTING HARDWARE TO 65 FT-LBS

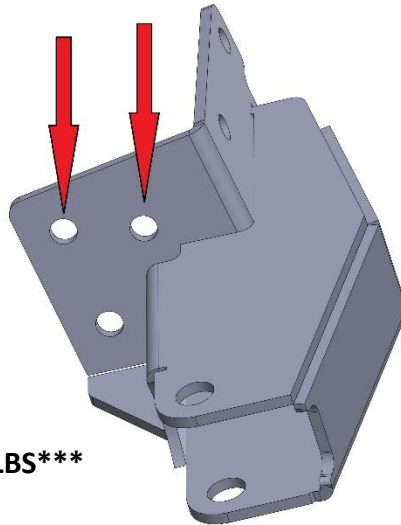


## **PANHARD BAR CROSSMEMBER/PANHARD TO FRAME MOUNTING BRACKET INSTALLATION**



**HOLES INDICATED IN IMAGE WILL ALIGN WITH HOLES IN FACTORY FRAME WHERE  
ORIGINAL PANHARD BAR BRACKET ATTACHED.**

**ALL OTHER MOUNTING HOLES WILL NEED TO BE DRILLED.  
USE SUPPLIED 7/16 GRADE 8 MOUNTING HARDWARE.**

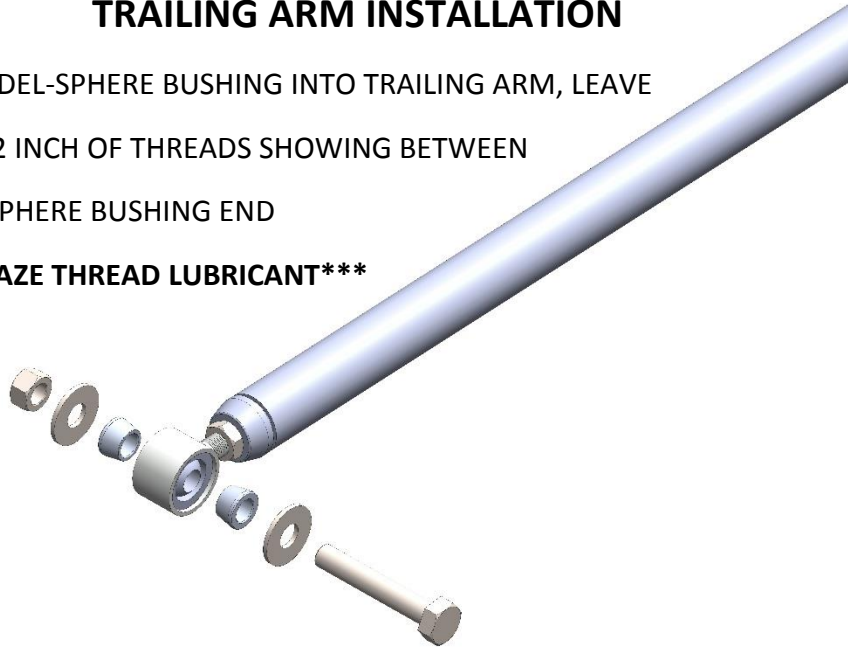


**\*\*\*TORQUE HARDWARE TO 65 FT-LBS\*\*\***

## TRAILING ARM INSTALLATION

-WHEN INSTALLING DEL-SPHERE BUSHING INTO TRAILING ARM, LEAVE APPROXIMATELY 1/2 INCH OF THREADS SHOWING BETWEEN JAM NUT AND DEL SPHERE BUSHING END

**\*\*\*USE AN ANTI-SEAZE THREAD LUBRICANT\*\*\***

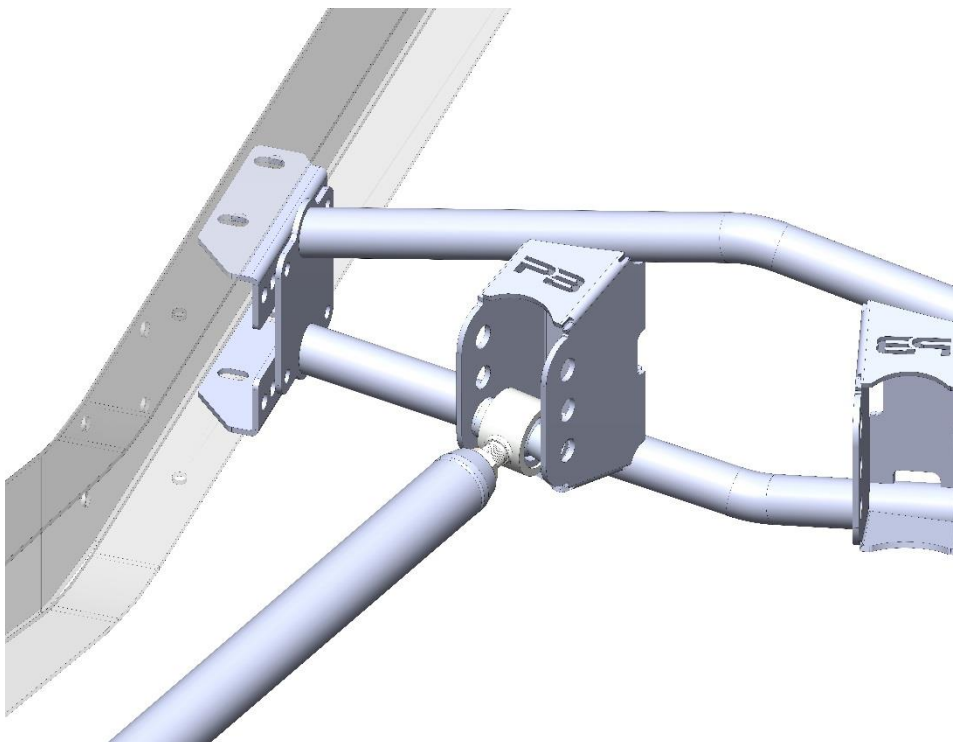


-TRAILING ARM HARDWARE KIT INCLUDES TWO SETS OF NUTS; USE THE NYLOC NUT FOR FINAL ASSEMBLY AND THE RAW NUT FOR MOCK UP

-START WITH TRAILING ARM MOUNTED IN LOWEST HOLE ON TRAILING ARM X-MEMBER  
**\*\*\*SEE IMAGE BELOW\*\*\***

-TORQUE DEL SPHERE MOUNTING BOLT TO TRAILING ARM X-MEMBER TO 75 FT-LBS

-TRAILING ARM U-BOLT NUTS REQUIRE PATIENCE AND DEPENDING ON WRENCH... MAYBE SOME MODIFICATIONS TO OPEN END; IT WILL BE IMPOSSIBLE TO GET A TORQUE WRENCH ON THE U-BOLT NUT SO GET IT AS TIGHT AS YOU CAN 😊



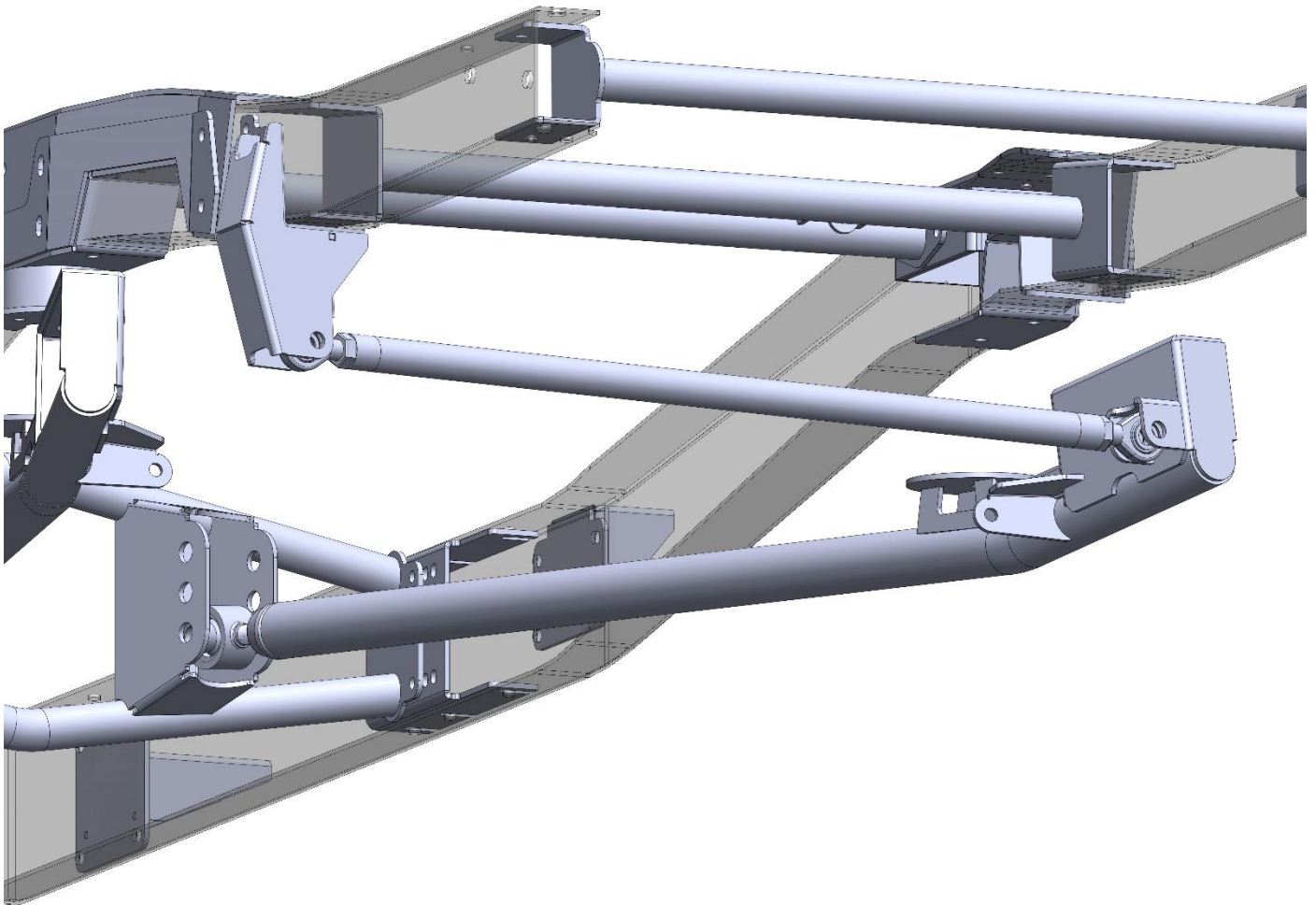


## PANHARD BAR INSTALLATION

-INSTALL PANHARD BAR USING SUPPLIED GRADE 8 HARDWARE TORQUE 5/8 BOLTS TO 75 FT-LBS

**\*\*\*USE AN ANTI-SEIZE THREAD LUBRICANT\*\*\***

**\*\*\*NOTE ONE ROD END IS RH THREAD AND ONE IS LH THREAD\*\*\***



## COILOVER INSTALLATION

-INSTALL COIL-OVERS USING SUPPLIED HARDWARE

-COILOVER LENGTH TO BE SET AT 13.5" EYELET TO EYELET AT RIDE HEIGHT

