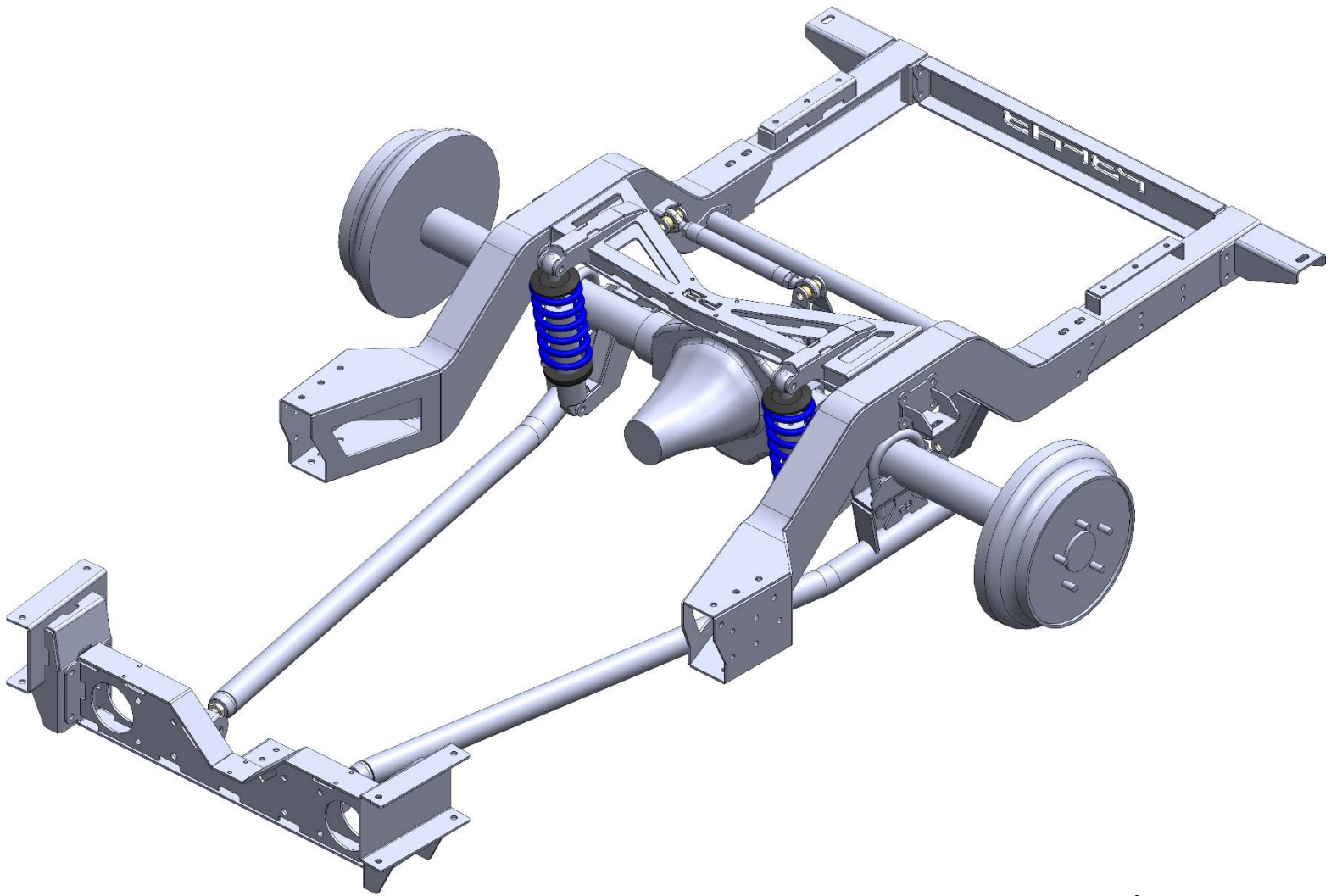


# **PBFAB DROPMEMBER REAR**

## **47-54 LEVEL 2 COILOVER**

### **INSTALL GUIDE**



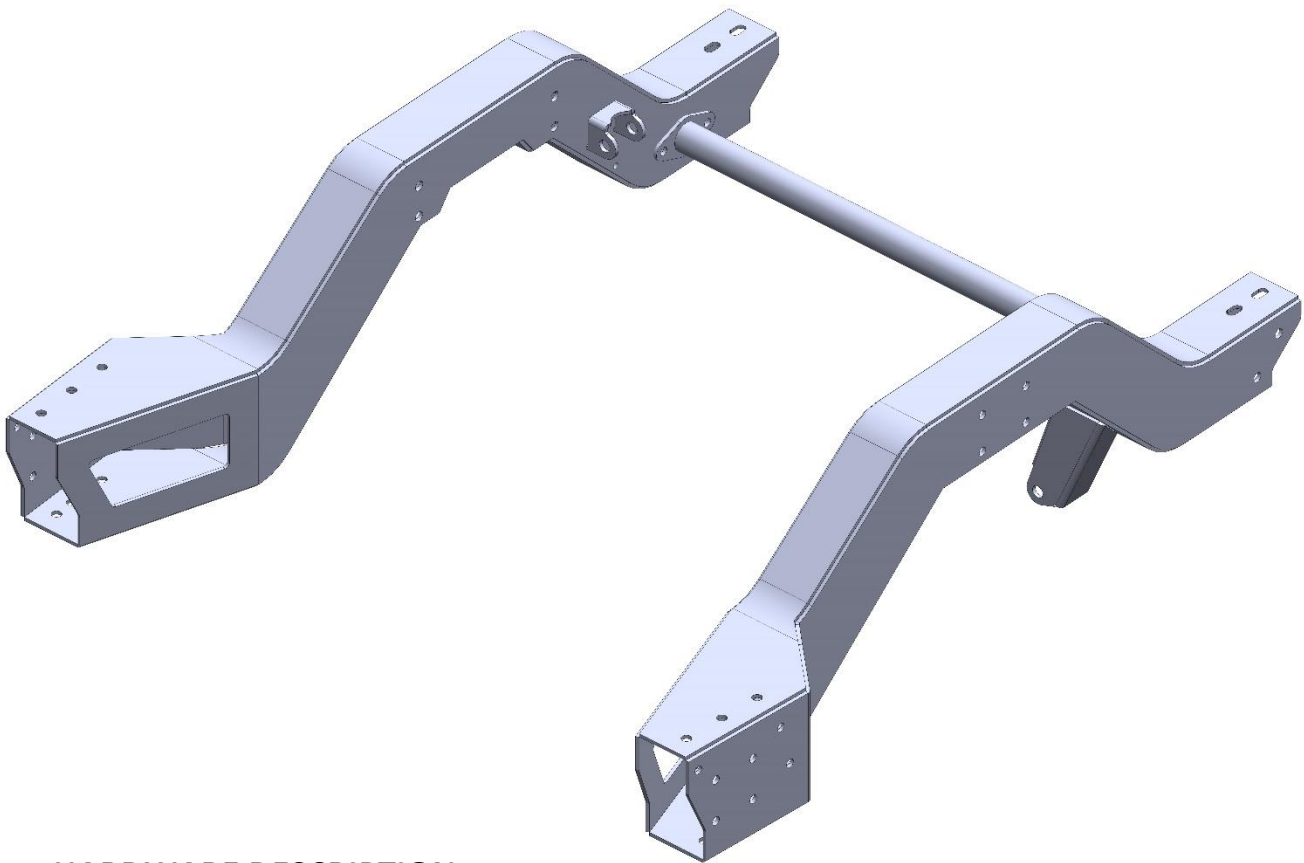
4/2020

## **SECTION 1: INDIVIDUAL COMPONENTS WITH HARDWARE DESCRIPTIONS**

**\*\*\*HARDWARE BAGS WILL HAVE A LABEL WITH PART NUMBER THAT CORRELATE TO EACH PART\*\*\***

**PART#** RN4754-2

**DESCRIPTION:** REAR NOTCH 47-54 LEVEL 2



### **HARDWARE DESCRIPTION:**

7/16 X 1.25 GRADE 8 BOLT USS (QTY. 36)

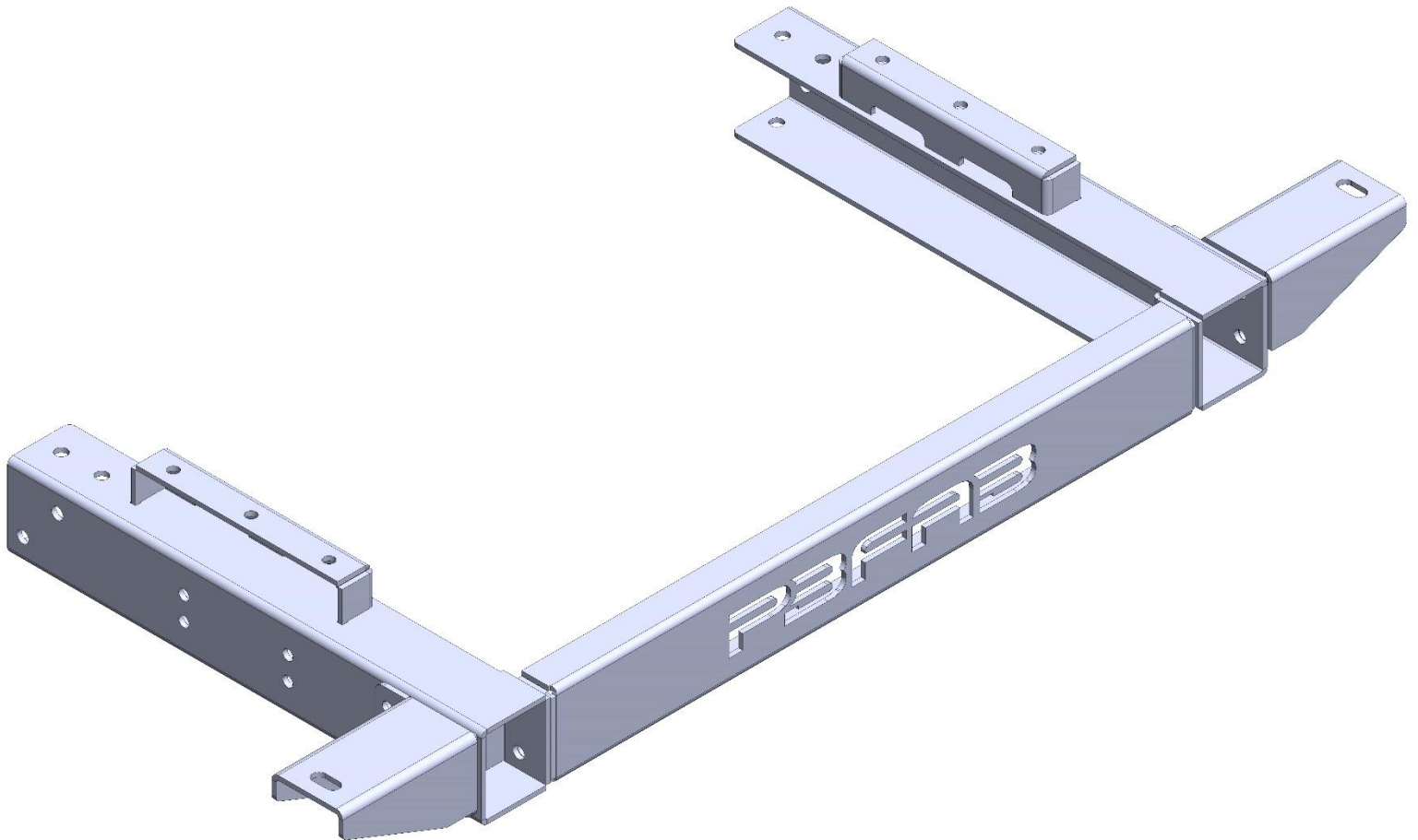
7/16 GRADE 8 NYLOC NUT (QTY. 26)

7/16 GRADE 8 LOCK WASHER USS (QTY. 10)

3/8 GRADE 8 FLAT WASHER USS (QTY. 62)

**PART#** RFR4754-3-B-WW

**DESCRIPTION:** REAR FRAME ASSEMBLY; 47-54 GM; LEVEL 3 WIDE WHEEL NOTCH SPECIFIC



**HARDWARE DESCRIPTION:**

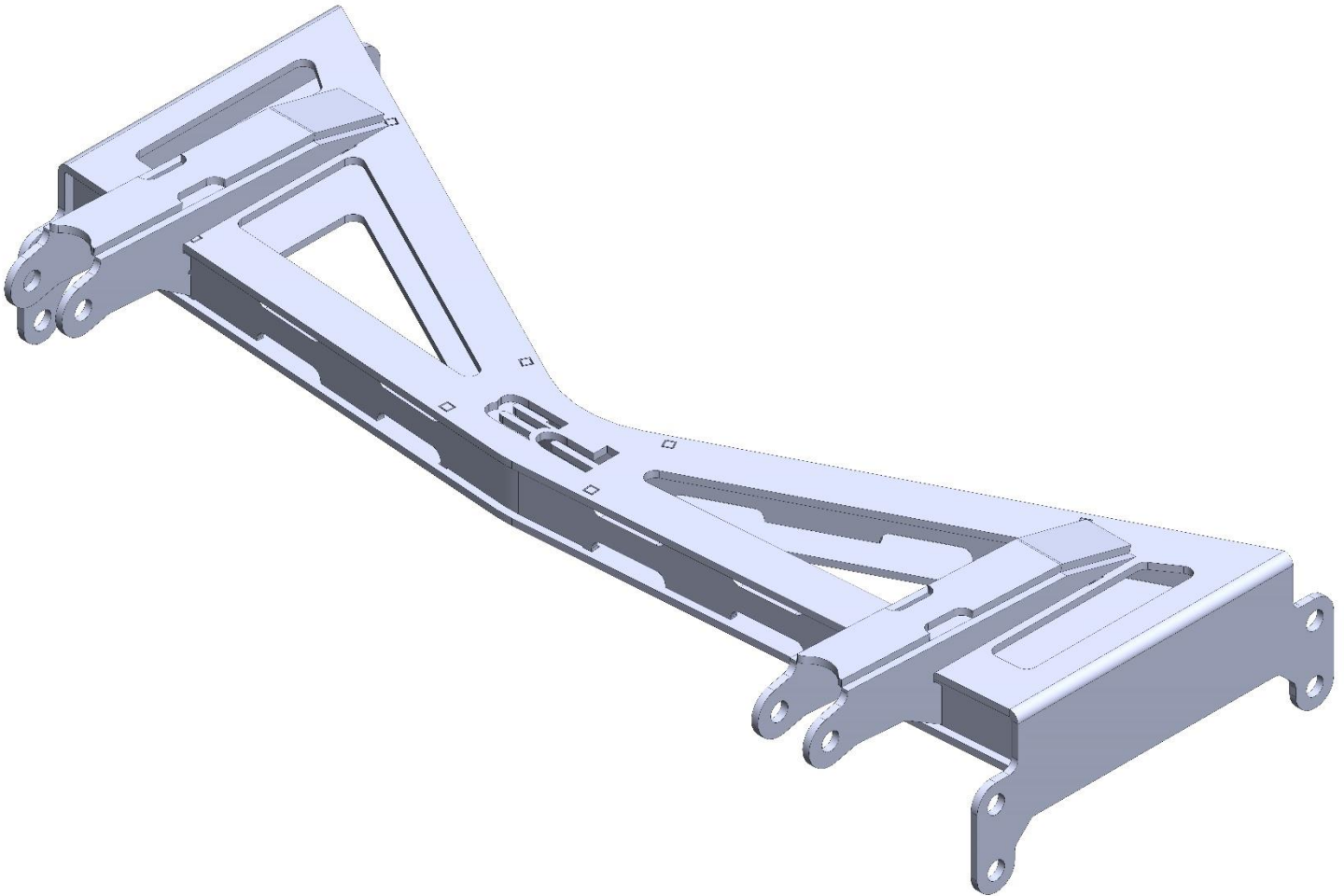
7/16 X 1.25 GRADE 8 BOLT USS (QTY. 22)

7/16 GRADE 8 NYLOC NUT USS (QTY. 22)

3/8 GRADE 8 FLAT WASHER USS (QTY. 44)

**PART#** BA7387-IC

**DESCRIPTION:** BRIDGE ASSEMBLY; 73-87 C10 GM; INBOARD COIL-OVER



**HARDWARE DESCRIPTION:**

7/16 X 1.25 GRADE 8 BOLT USS (QTY. 8)

7/16 GRADE 8 LOCKWASHER (QTY. 8)

3/8 GRADE 8 FLAT WASHER (QTY. 8)

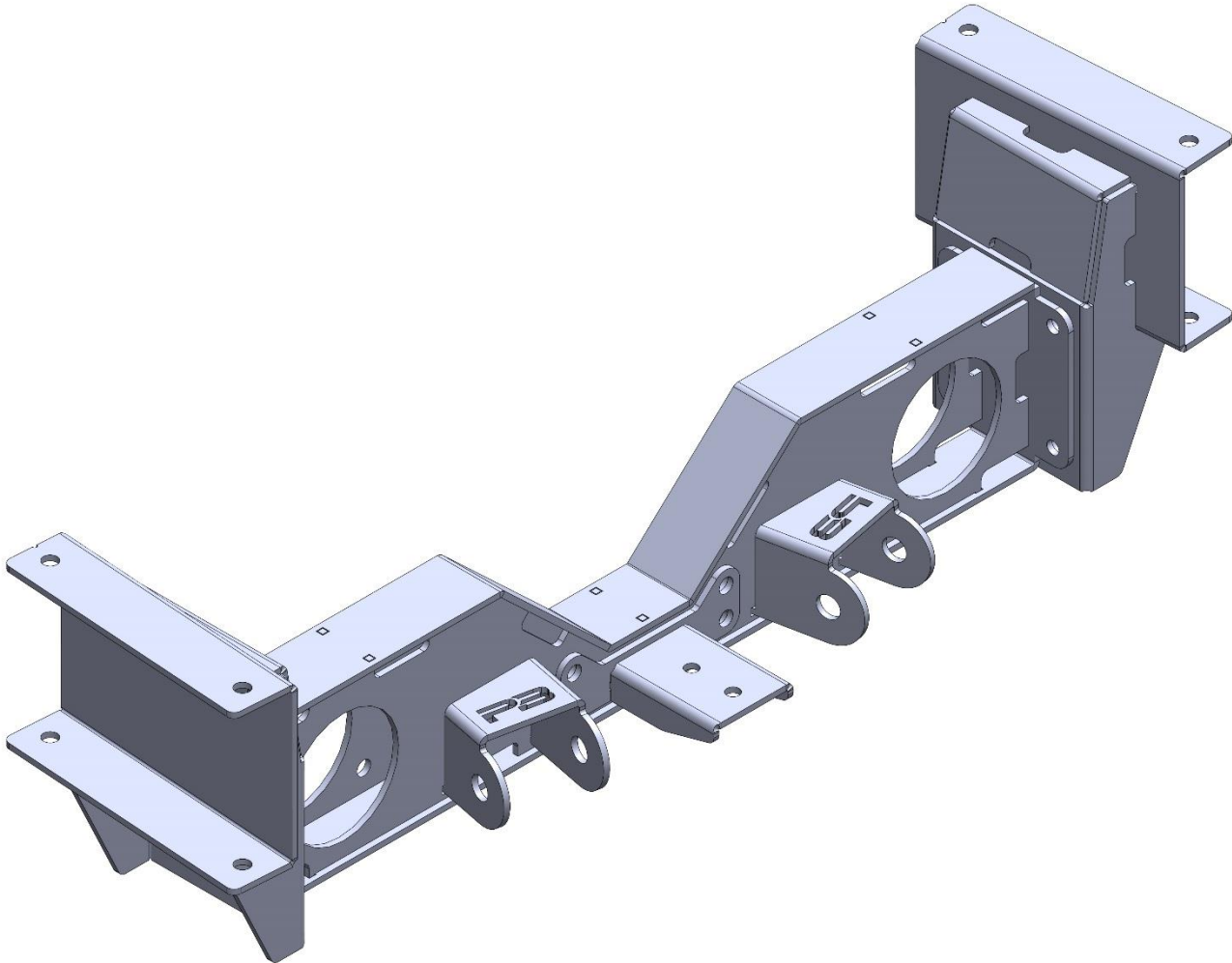
1/2 X 2.5 GRADE 8 BOLT USS (QTY. 4)

1/2 GRADE 8 NYLOC NUT USS (QTY. 4)

7/16 GRADE 8 FLAT WASHER USS (QTY. 8)

**PART#** TAXM4754-WW

**DESCRIPTION:** TRAILING ARM CROSS MEMBER 47-54 WIDE WHEEL NOTCH SPECIFIC



**HARDWARE DESCRIPTION:**

7/16 X 1.25 GRADE 8 BOLT USS (QTY. 20)

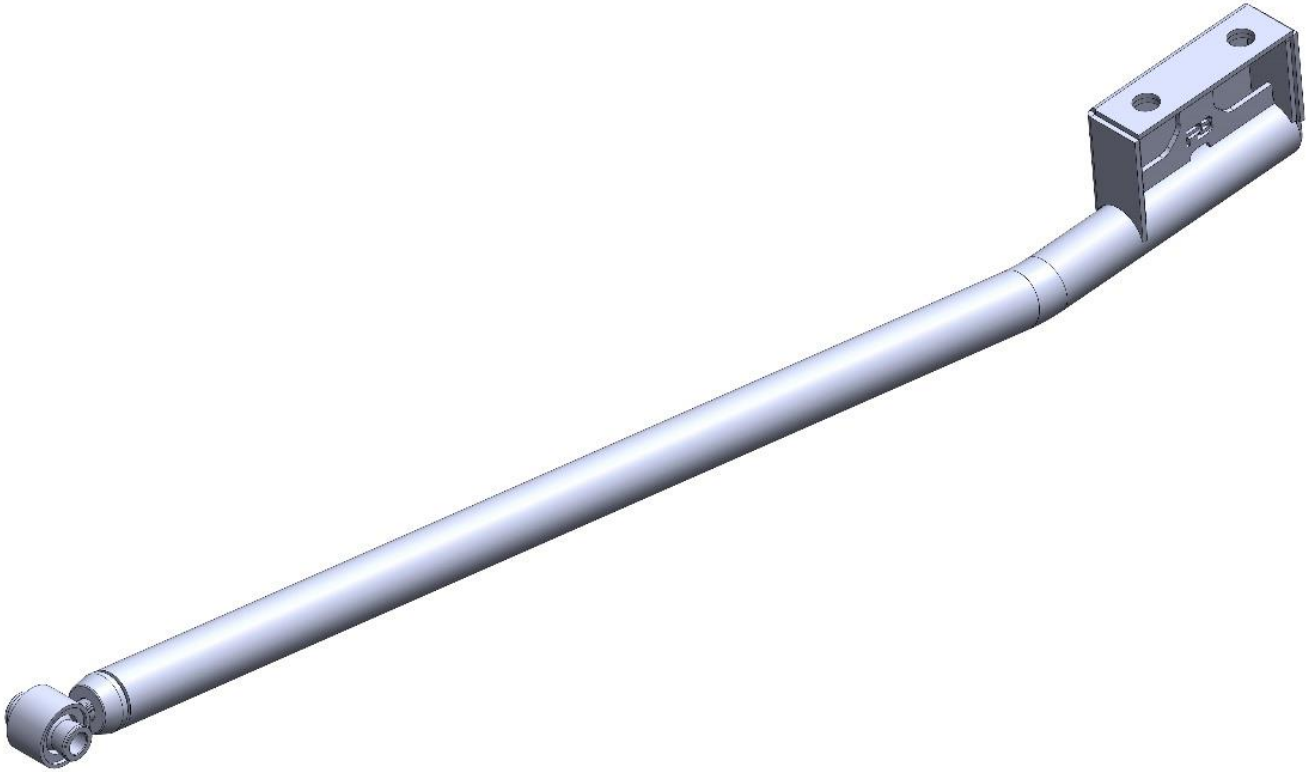
7/16 GRADE 8 NYLOC NUT (QTY. 16)

7/16 GRADE 8 LOCK WASHER USS (QTY. 4)

3/8 GRADE 8 FLAT WASHER USS (QTY. 36)

**PART#** TA-3-WL

**DESCRIPTION:** TRAILING ARM; 3 INCH DROP; WATTS LINK SPECIFIC



**HARDWARE DESCRIPTION:**

3/4 X 4.5 GRADE 8 BOLT SAE (FINE THREAD) (QTY. 2)

3/4 GRADE 8 FLAT WASHER (QTY. 4)

3/4 GRADE 8 NYLOC NUT SAE (FINE THREAD) (QTY. 6)

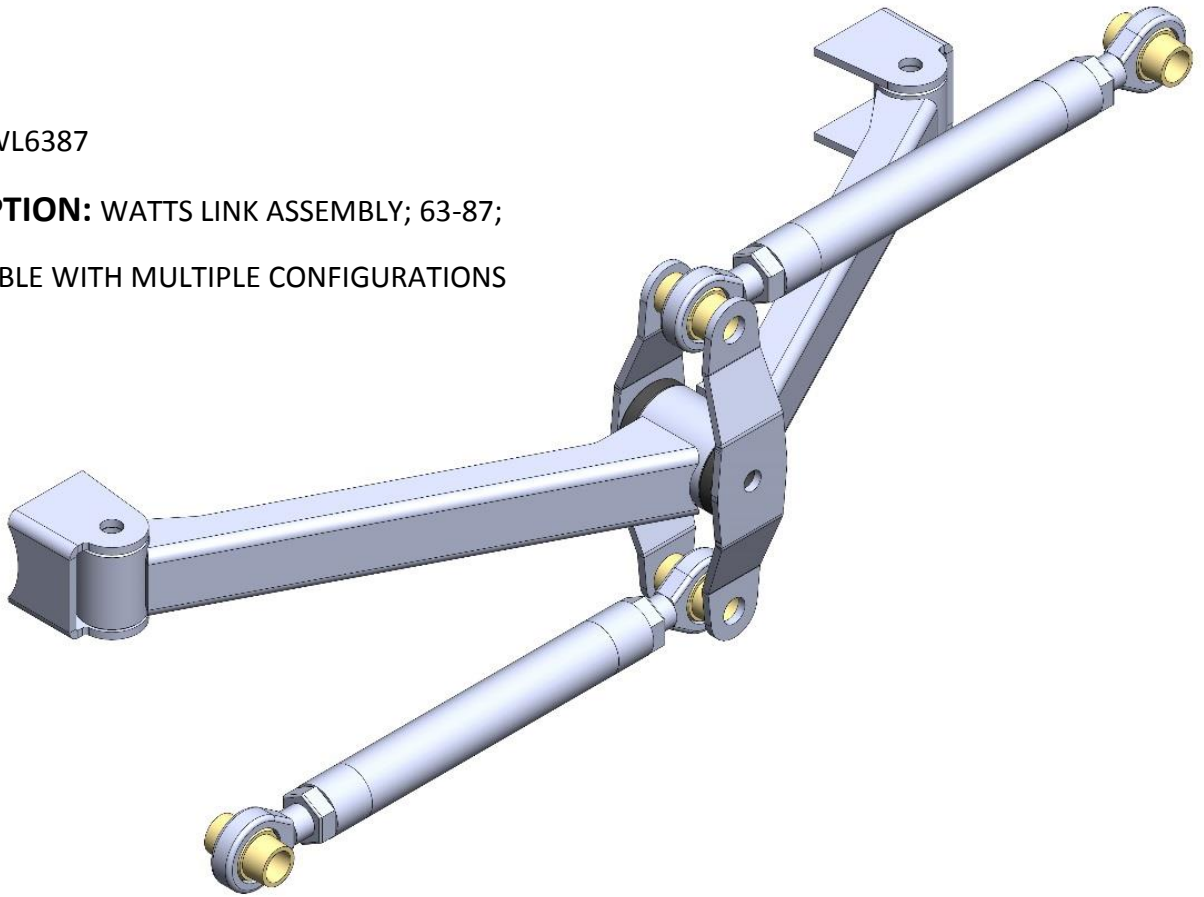
3/4 DEL SPHERE JOINT (QTY. 2)

3/4 ALUMINUM CONE SPACER (QTY. 4)

3/4 U-BOLT WITH NUTS AND WASHERS (PAIR)

**PART#** WL6387

**DESCRIPTION:** WATTS LINK ASSEMBLY; 63-87;  
COMPATIBLE WITH MULTIPLE CONFIGURATIONS



**HARDWARE DESCRIPTION:**

1/2 X 3.25 GRADE 8 BOLT USS (QTY. 2)

1/2 X 4 GRADE 8 BOLT USS (QTY. 1)

1/2 GRADE 8 NYLOC NUT USS (QTY. 3)

7/16 GRADE 8 FLAT WASHER USS (QTY. 6)

5/8 X 3.25 GRADE 8 BOLT USS (QTY. 4)

5/8 GRADE 8 NYLOC NUT USS (QTY. 4)

5/8 GRADE 8 FLAT WASHER SAE (QTY. 8)

PHB CONE SPACERS (CS10) (QTY. 8)

3/4 X 5/8 RH ROD END WITH JAM NUT (QTY. 2)

3/4 X 5/8 LH ROD END WITH JAM NUT (QTY. 2)

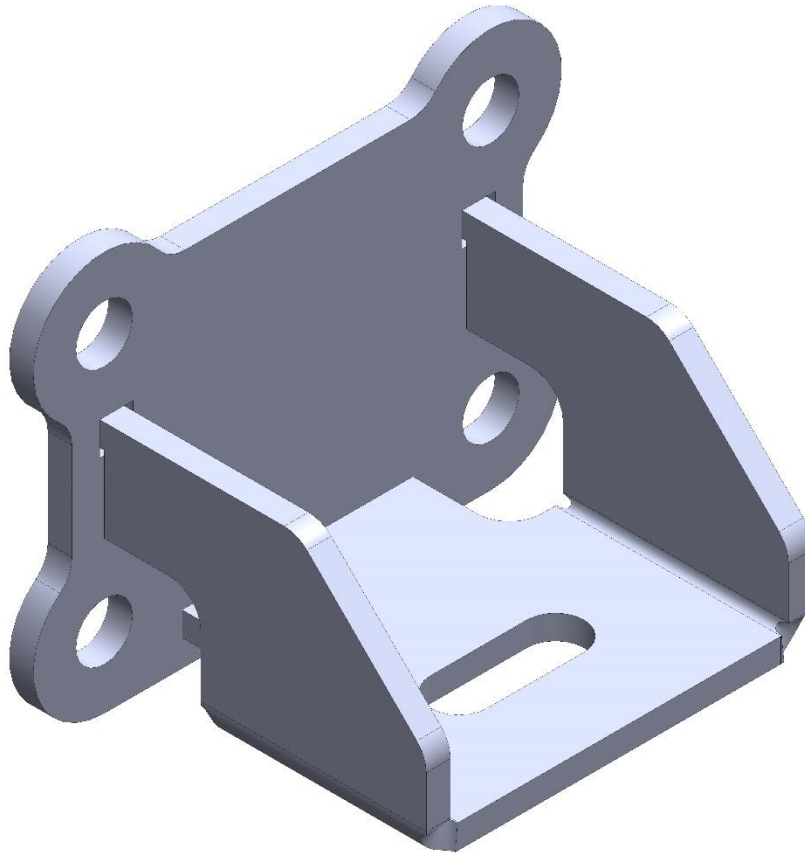
DM-V6 BUSHING HALF (QTY. 2)

DM-V6 CRUSH TUBES (QTY. 1)

ZERK FITTING (QTY. 1)

**PART#** BUMPSTOP-G

**DESCRIPTION:** BUMPSTOP BRACKET; COMES AS PAIR



**HARDWARE DESCRIPTION:**

3/8 X 1.25 GRADE 8 BOLT USS (QTY. 8)

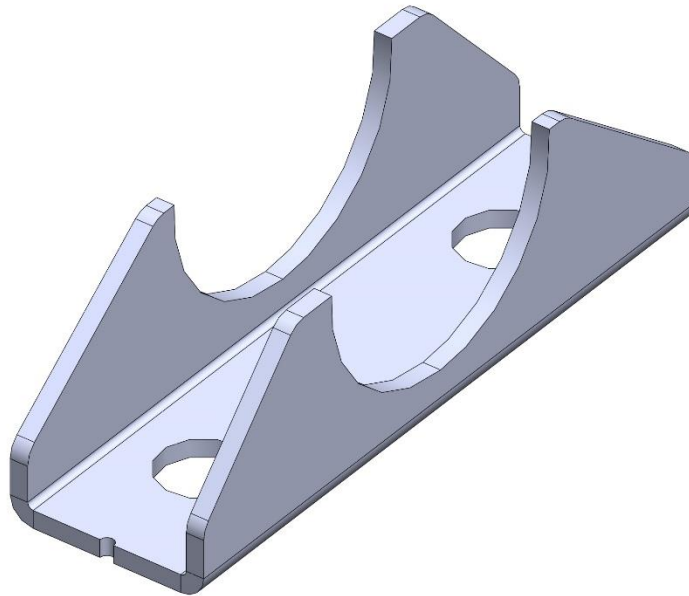
3/8 GRADE 8 LOCKWASHER USS (QTY. 8)

3/8 GRADE 8 FLAT WASHER USS (QTY. 8)



**PART#** TA-AP-3-2415

**DESCRIPTION:** TRAILING ARM AXLE PADS 3" AXLE TUBE DIAMETER; COMES AS MIRRORRED PAIR

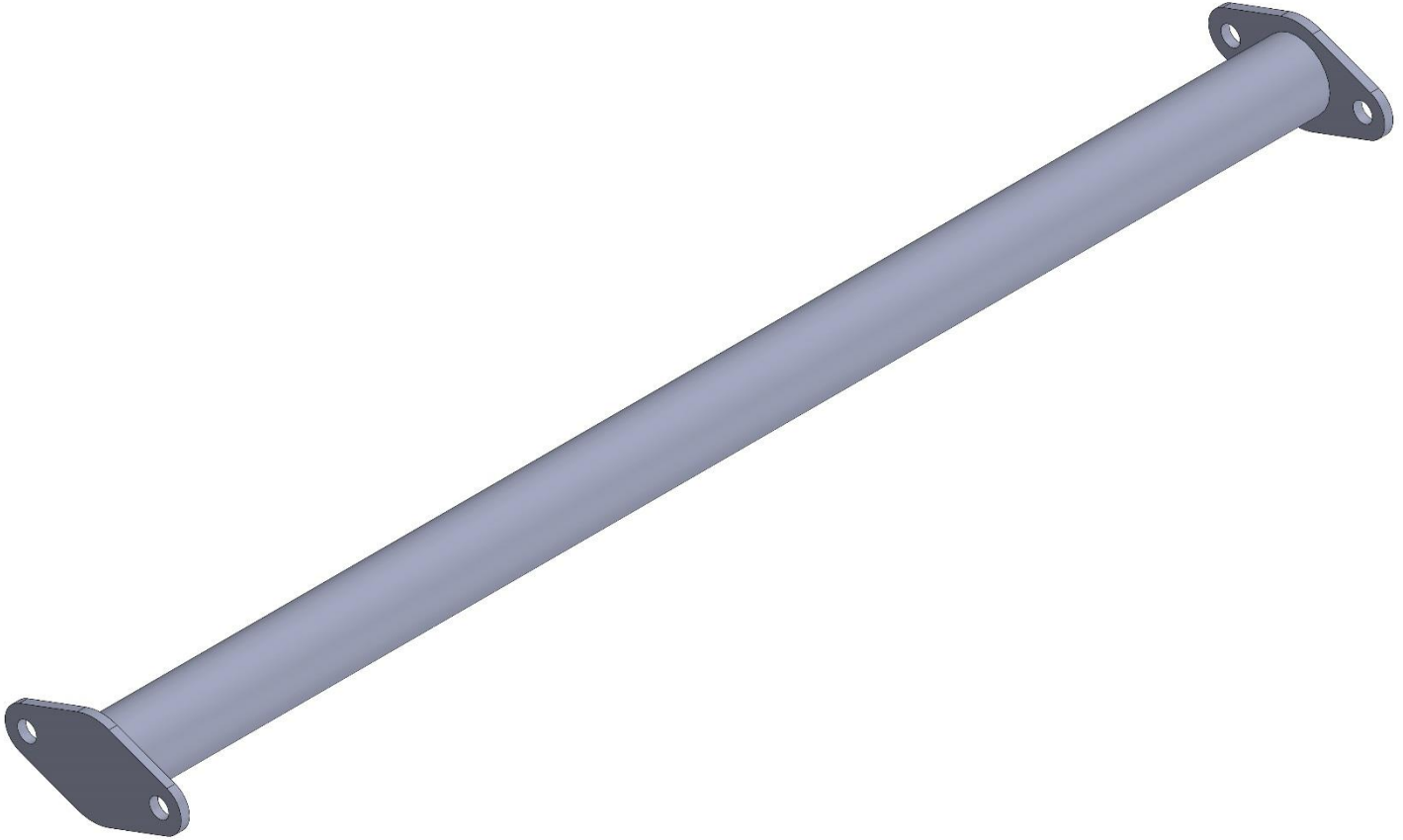


**HARDWARE DESCRIPTION:**

\*\*\*NO HARWDARE\*\*\*

**PART#** RNXM280

**DESCRIPTION:** REAR NOTCH CROSS MEMBER 28 INCHES OVERALL LENGTH

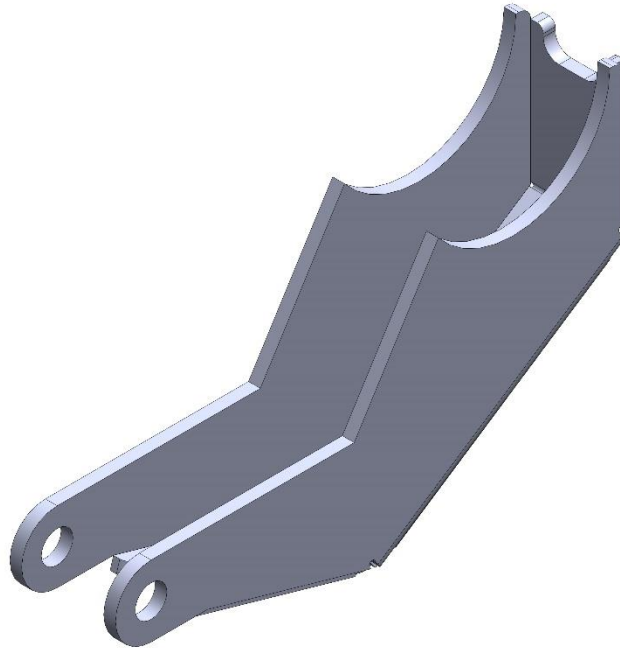


**HARDWARE DESCRIPTION:**

\*\*\*NO HARDWARE\*\*\*

**PART#** LCB-IC-2

**DESCRIPTION:** LOWER COIL OVER BRACKET; INBOARD COIL-OVER; LEVEL 2



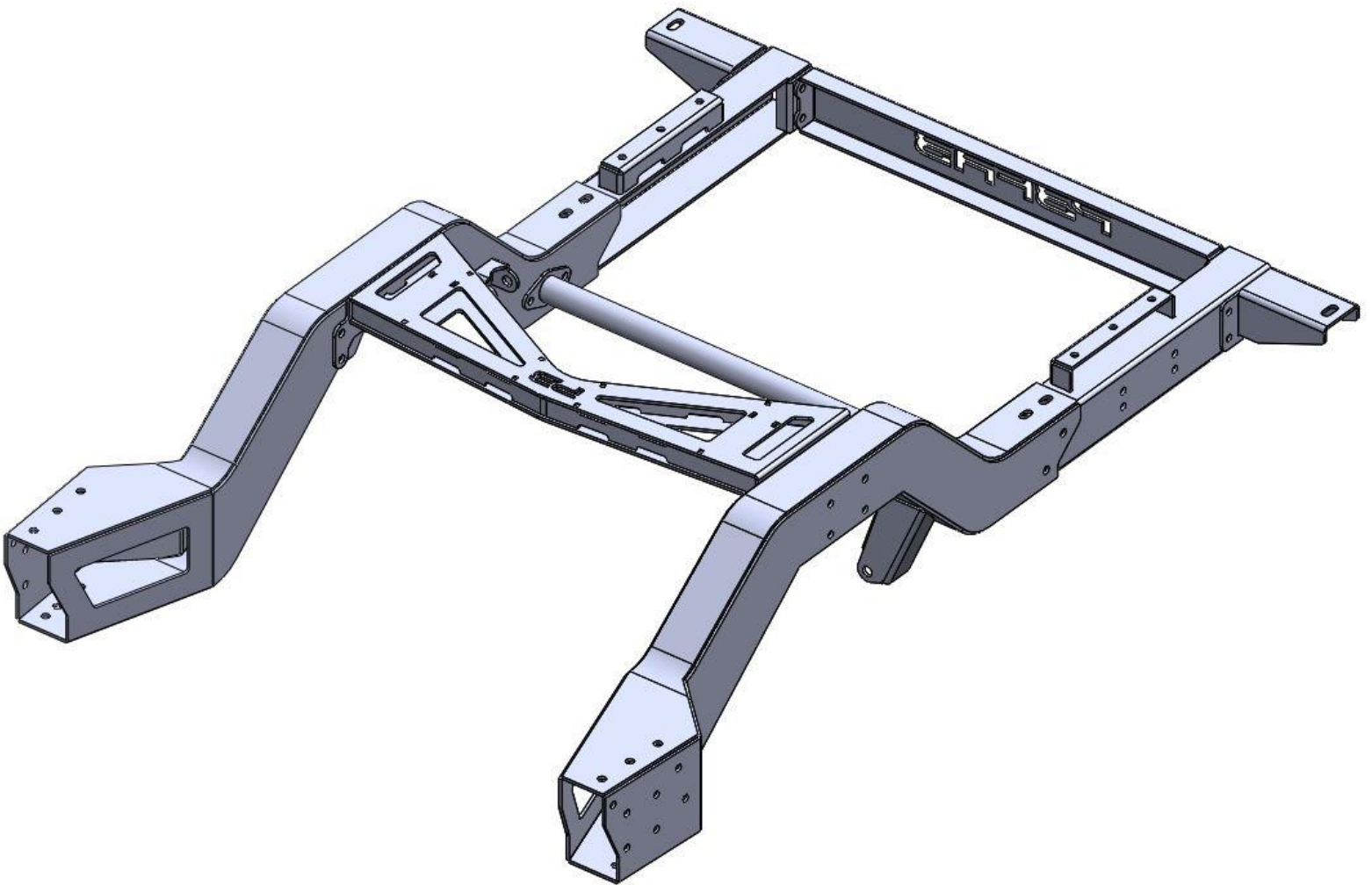
**HARDWARE DESCRIPTION:**

\*\*\*NO HARDWARE\*\*\*

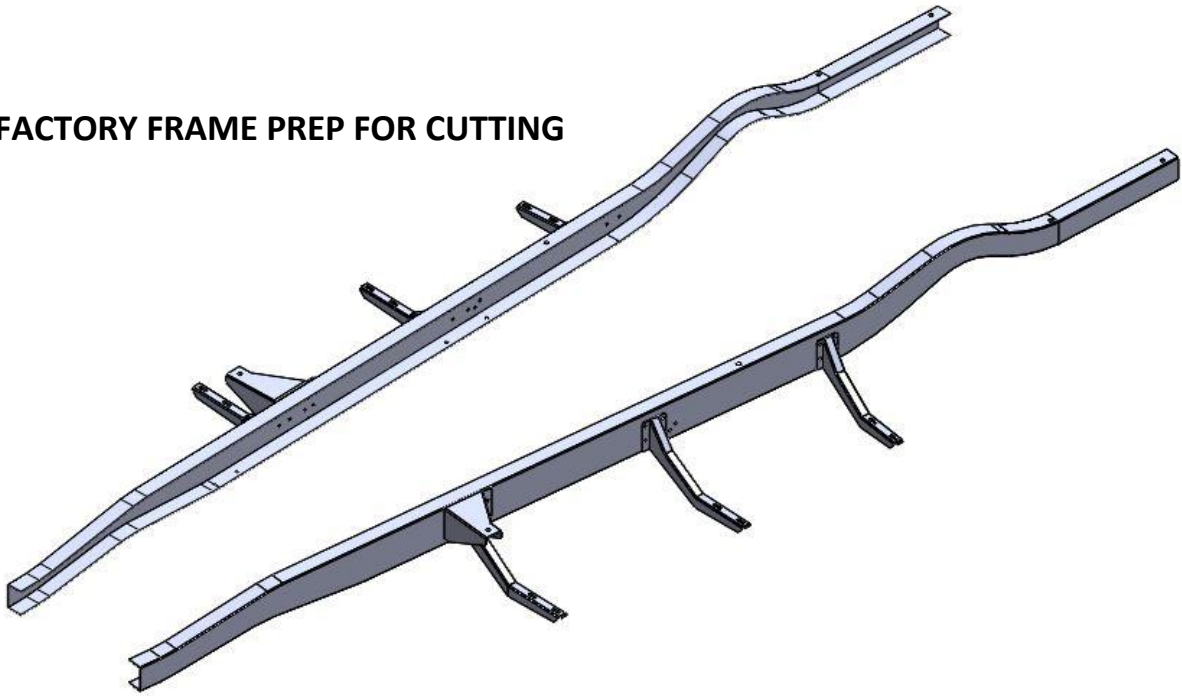
## REAR NOTCH ASSEMBLY

-ASSEMBLE REAR NOTCHES, BRIDGE ASSEMBLY, REAR NOTCH CROSSMEMBER, REAR FRAME RAIL ASSEMBLIES, AND REAR FRAME CROSSMEMBER USING SUPPLIED GRADE 8 HARDWARE

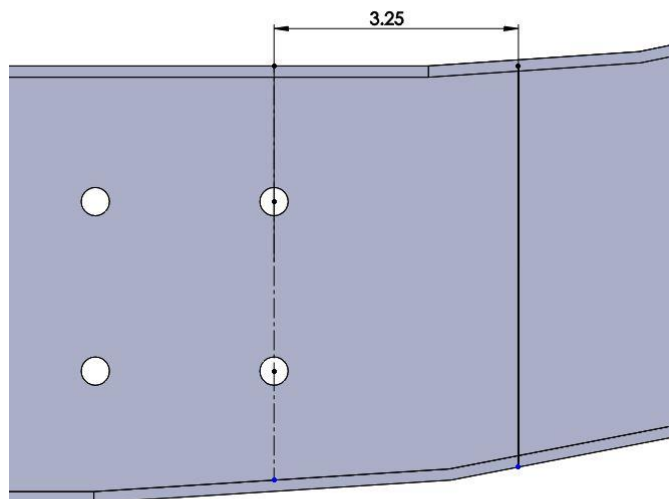
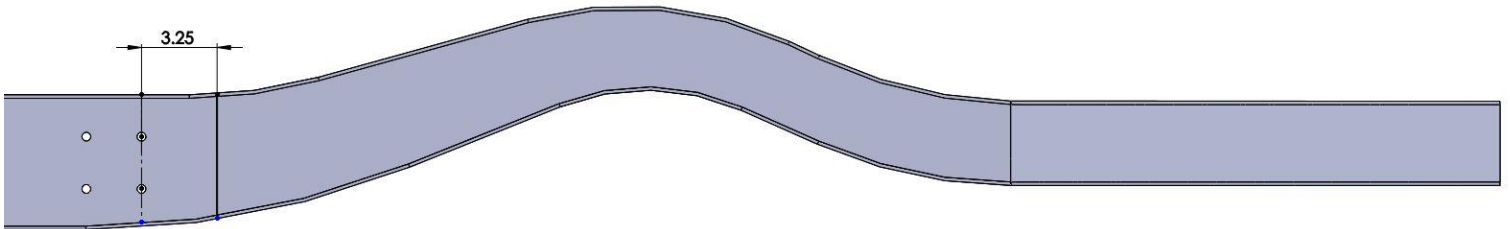
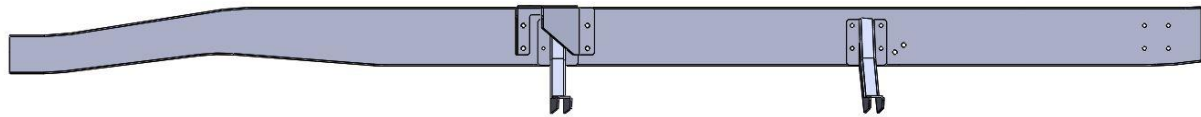
-DO NOT FULLY TIGHTEN AT THIS TIME



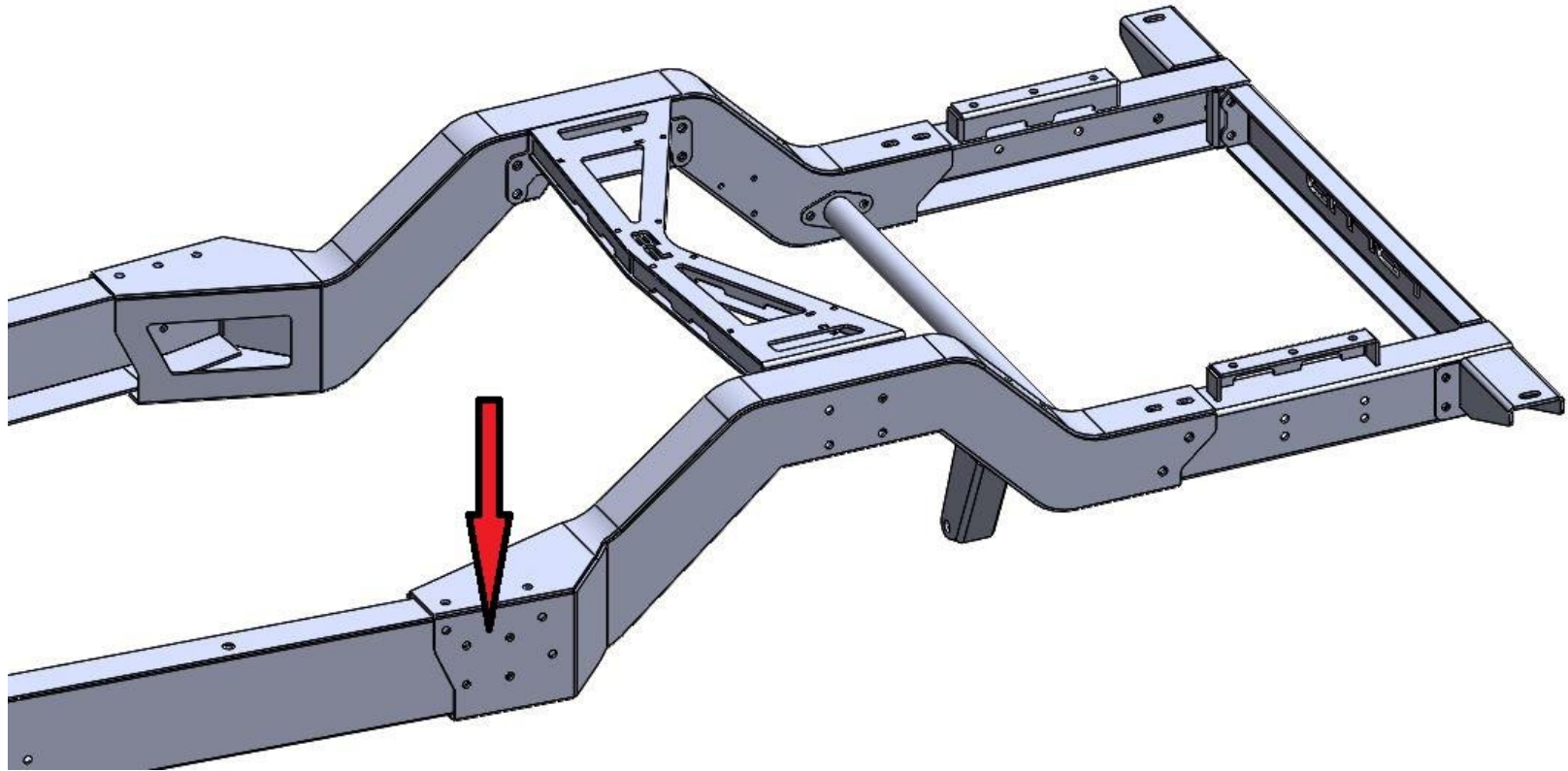
## FACTORY FRAME PREP FOR CUTTING



-REMOVE REAR RUNNING BOARD BRACKET AND CUT REAR FRAME OFF 3.25 INCHES  
REARWARD OF THE REAR MOUNTING HOLE CENTERLINE

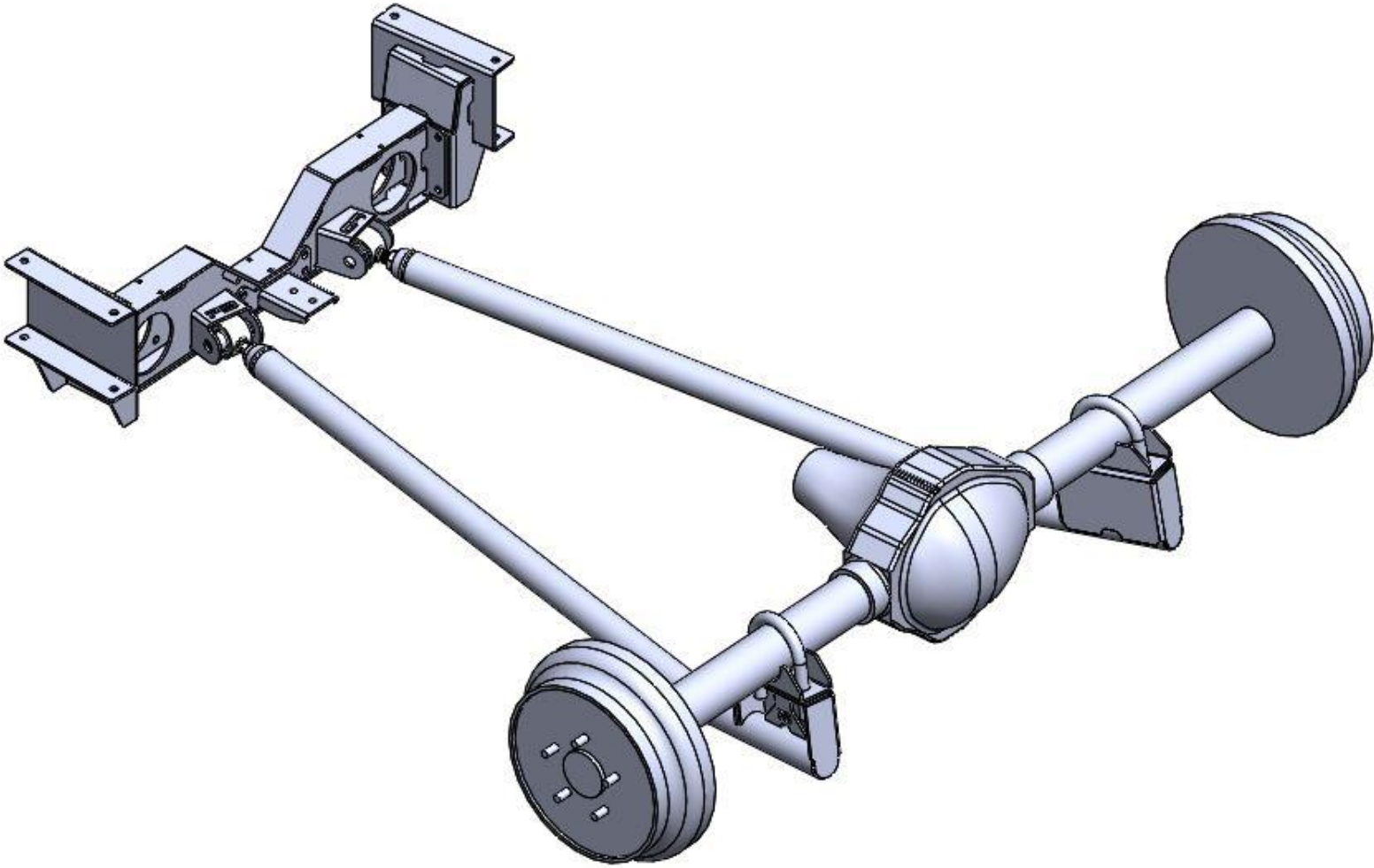


## NOTCH ASSEMBLY TO FRAME INSTALLATION



- SLIDE REAR NOTCH ASSEMBLY OVER FACTORY FRAME RAILS
- REAR RUNNING BOARD MOUNTING HOLES WILL BE USED TO ALIGN REAR NOTCH
- ENSURE REAR NOTCH ASSEMBLY IS LEVEL AND SQUARE
- TIGHTEN AND TORQUE BRIDGE ASSEMBLY, REAR NOTCH CROSSMEMBER, REAR FRAME RAIL ASSEMBLIES, AND REAR FRAME CROSSMEMBER TO 65 FT LBS.
- ENSURE REAR NOTCH ASSEMBLY IS LEVEL AND SQUARE IN FRAME
- USE REAR NOTCH AS TEMPLATE TO DRILL MOUNTING HOLES IN FRAME
- BOLT REAR NOTCH ASSEMBLY TO FACTORY FRAME RAILS USING SUPPLIED GRADE 8 HARDWARE; TORQUE TO 65 FT LBS.

## TRAILING ARM CROSSMEMBER INSTALLATION

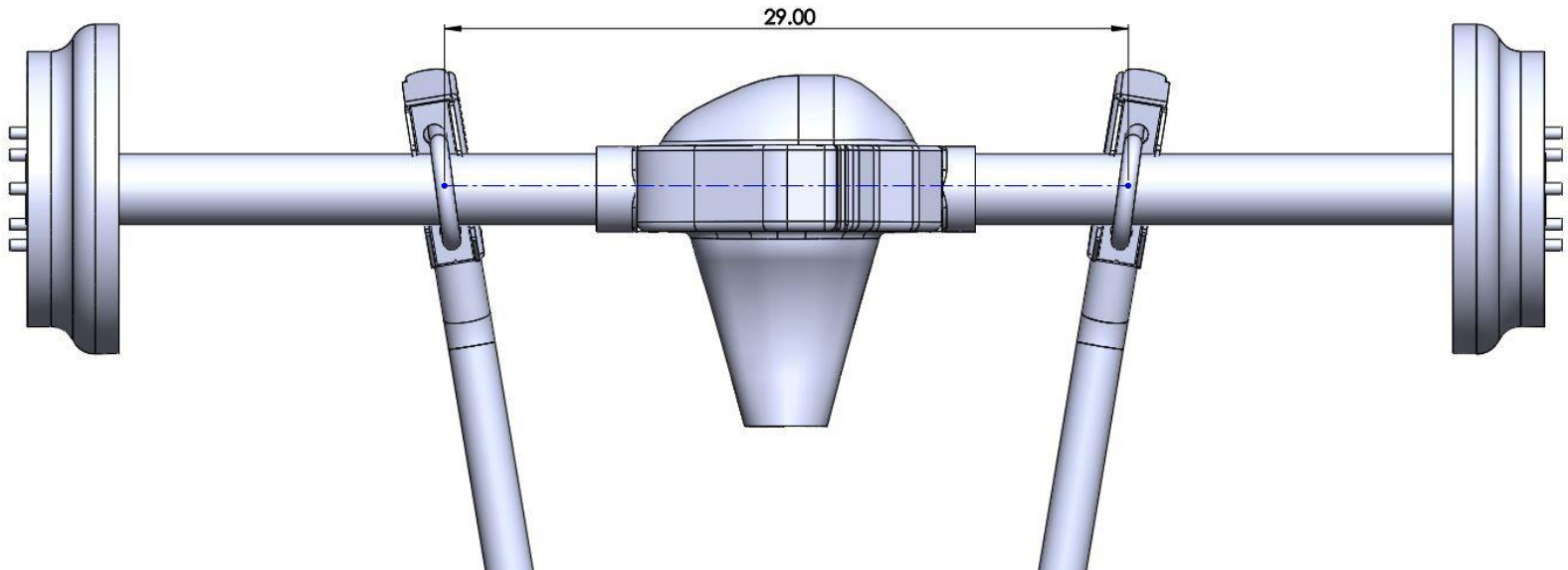


-IN ORDER TO ENSURE PROPER TRAILING ARM X-MEMBER LOCATION, IT WILL BE NECESSARY TO MOCK UP TRAILING ARMS AND REAR DIFFERENTIAL

-LEAVE APPROX 1/2 INCHES OF THREAD SHOWING ON DEL SPHERE JOINT TO TRAILING ARM THREADED BUNG TO ALLOW SOME FINE TUNE ADJUSTMENTS

**(CONTINUED ON NEXT PAGE)**

## TRAILING ARM CROSSMEMBER INSTALLATION (CONTINUED)



-MOCK UP TRAILING ARMS AND TRAILING ARM AXLE SADDLES ON REAR DIFFERENTIAL

-SET DISTANCE BETWEEN UBOLT CENTERS AT 29 INCHES

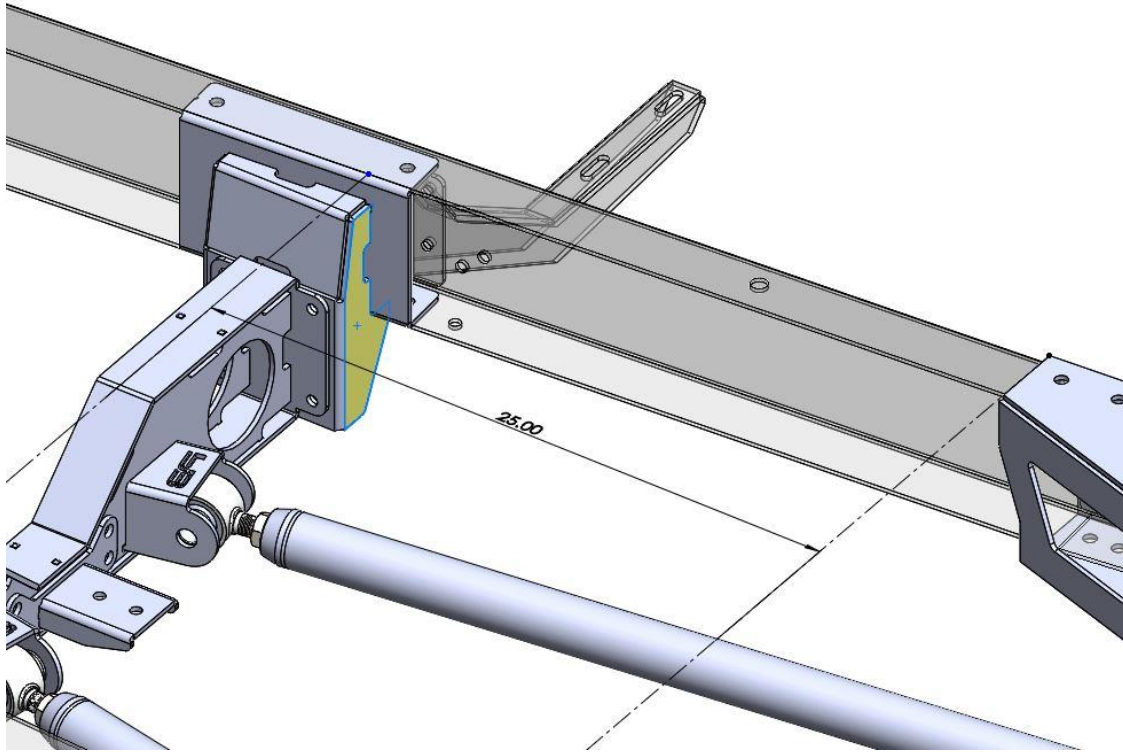
-FOR MOCK UP INSTALLATION USE THE PLAIN LARGE NUTS IN THE TRAILING ARM HARWDARE KIT (USE THE GOLD ZINC NYLOC NUTS FOR FINAL ASSEMBLY)

**\*\*\*DO NOT YET WELD TRAILING ARM AXLE SADDLES TO THE REAR DIFFERENTIAL\*\*\***

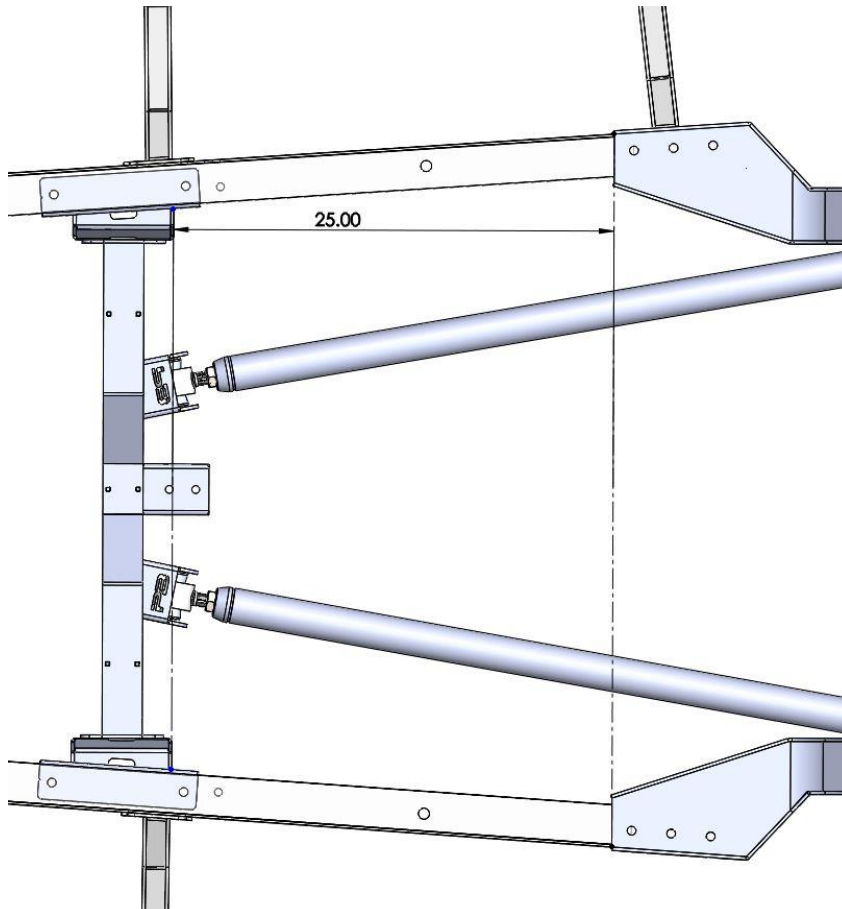
(CONTINUED ON NEXT PAGE)



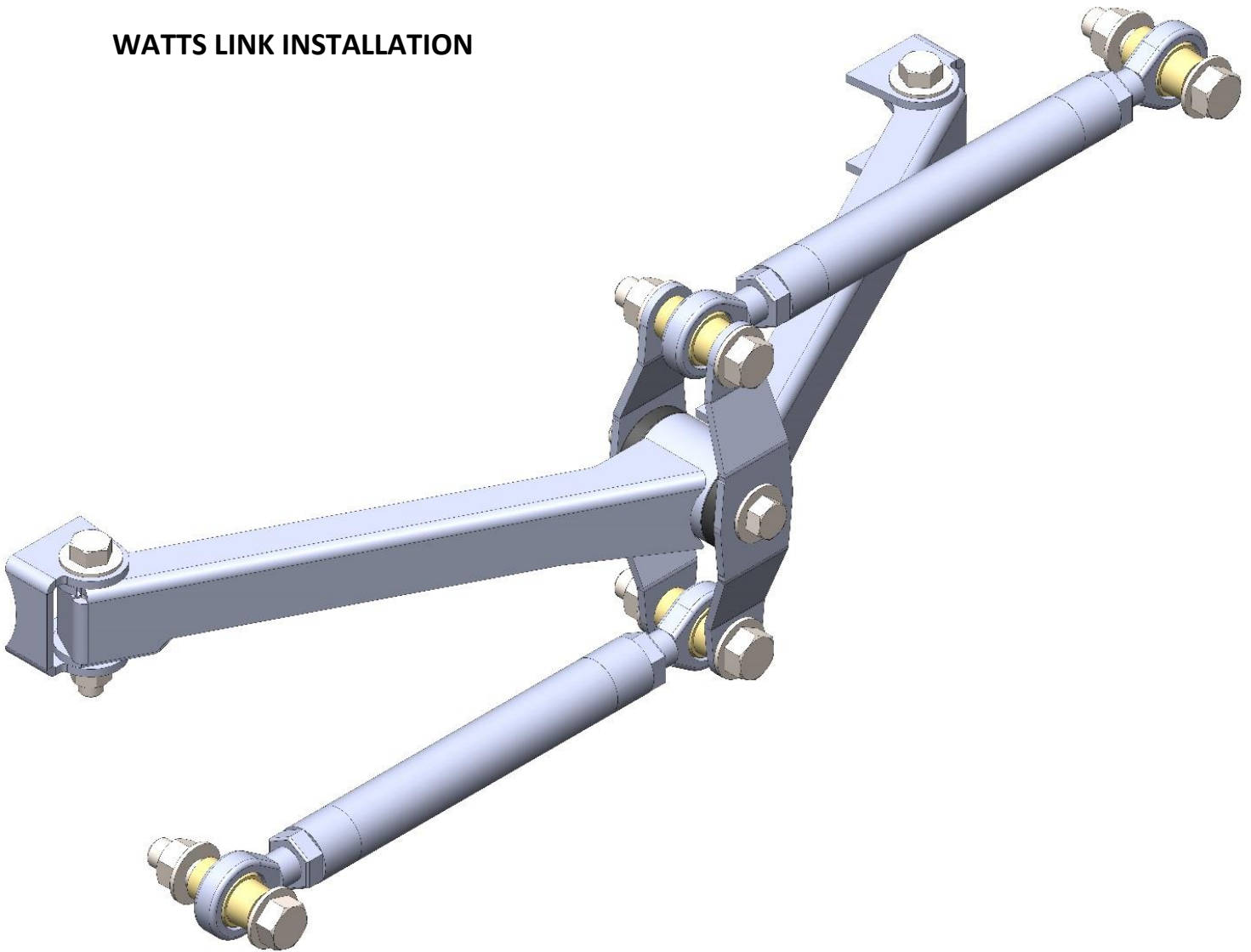
## TRAILING ARM CROSSMEMBER INSTALLATION (CONTINUED)



FRONT EDGE OF TRAILING ARM CROSSMEMBER BRACKET (IN YELLOW) WILL SET 25 INCHES FORWARD OF THE NOTCHES FRONT EDGE (SEE PIC BELOW) MARK AND DRILL HOLES, INSTALL USING SUPPLIED GRADE 8 HARDWARE; TORQUE TO 65 FT LBS



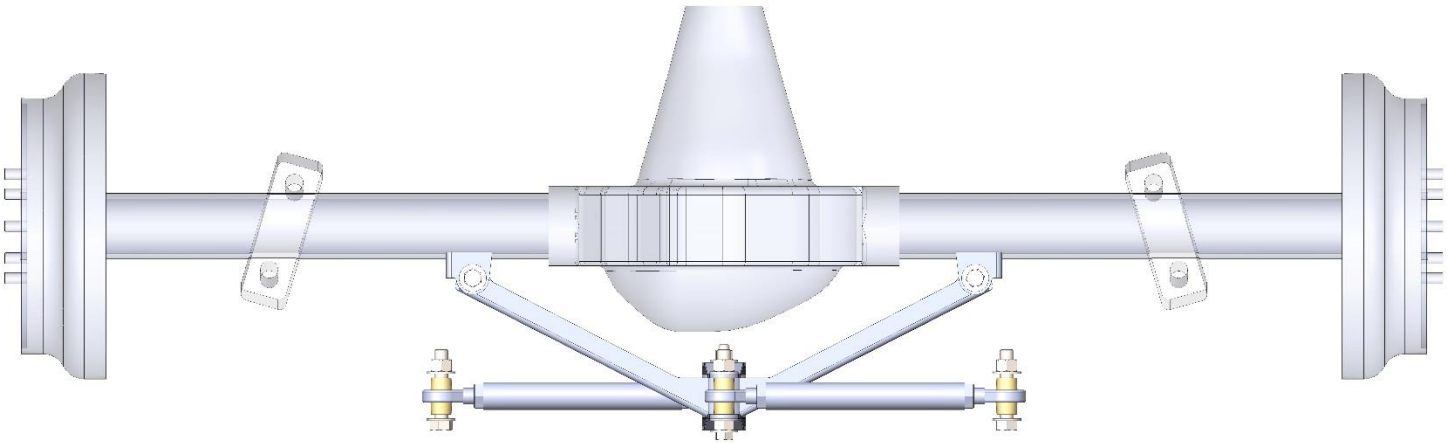
## WATTS LINK INSTALLATION



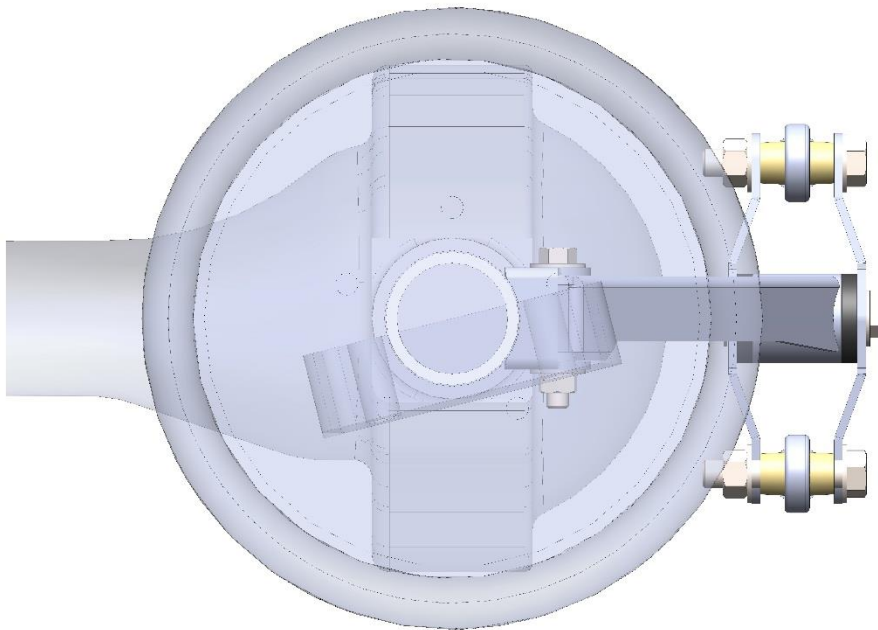
-REVIEW FOLLOWING IMAGES AND NOTES TO ENSURE PROPER INSTALLATION OF THE WATT'S LINK

(CONTINUED ON NEXT PAGE)

## WATTS LINK INSTALLATION (CONTINUED)



-ENSURE THAT THE WATTS LINK ASSEMBLY IS CENTERED ON THE REAR DIFFERENTIAL



-ENSURE THAT THE WATTS LINK IS PERPENDICULAR TO THE GROUND AT RIDE HEIGHT; TACK THE MOUNTING BRACKETS IN PLACE

**\*\*\*DO NOT YET FULLY WELD THE WATTS LINK MOUNTING BRACKETS\*\*\***

## LOWER COILOVER MOUNTING BRACKET INSTALLATION

-MOCK UP REAR SUSPENSION SO THERE IS 3 INCHES OF ROOM BETWEEN TOP OF AXLE TUBE AND BOTTOM OF NOTCH

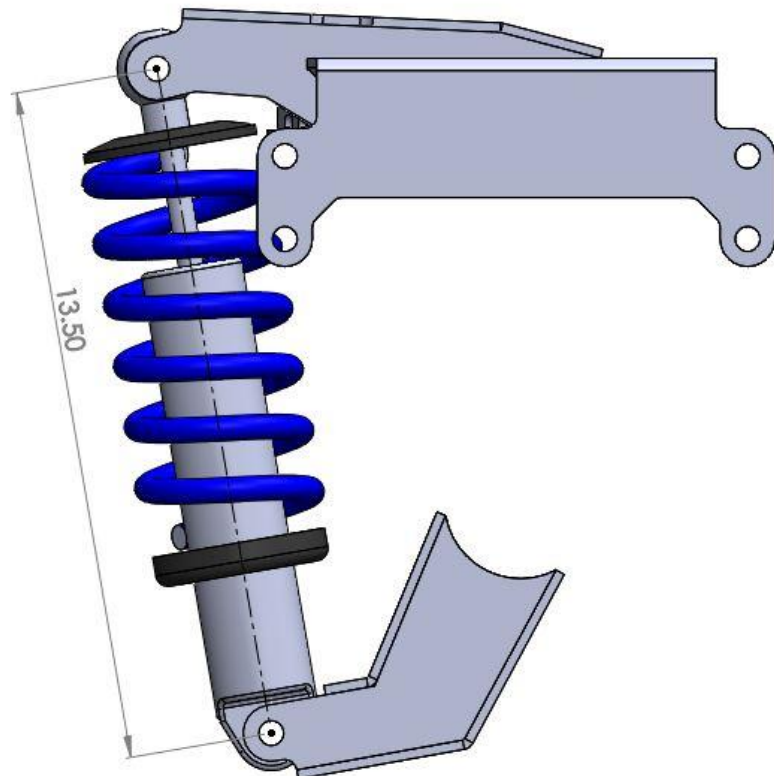
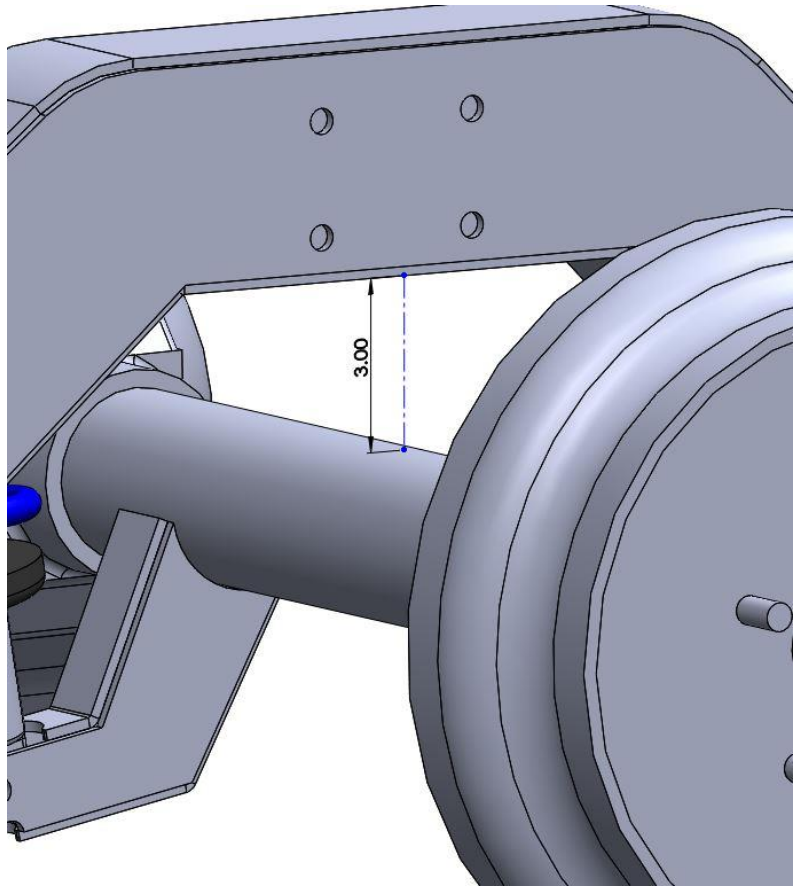
-SET DISTANCE BETWEEN UPPER COILOVER MOUNTING HOLE AND LOWER COILOVER MOUNTING HOLE TO 13.5 INCHES

-ENSURE UPPER AND LOWER COILOVER MOUNTING BRACKETS MEASURE EQUAL OUTSIDE TO OUTSIDE (COILOVER WILL BE STRAIGHT UP AND DOWN WHEN INSTALLED)

-SET REAR PINION ANGLE TO UP 2 DEGREES

-TACK LOWER COILOVER MOUNTING BRACKETS AND TRAILING ARM MOUNTING PADS TO REAR DIFFERENTIAL

-DO NOT FULLY WELD AT THIS TIME



**-ENSURE THE FOLLOWING STEPS ARE TAKEN BEFORE FULLY WELDING  
MOUNTING BRACKETS ATTACHED TO THE AXLE:**

-CONFIRM AND ADJUST DRIVE-LINE ANGLES IF NECESSARY

-CYCLE SUSPENSION MULTIPLE TIMES THROUGH ITS TRAVEL WITH ALL  
COMPONENTS MOCKED UP TO ENSURE NO BINDING OR CLEARANCE ISSUES ARE  
PRESENT

-CHECK AGAIN AND AGAIN.... MEASURE 100 MORE TIMES....

-THE MOUNTING BRACKETS ATTACHED TO THE REAR DIFFERENTIAL MAY NOW BE  
FULLY WELDED 😊

FOR ANY TECH HELP ALONG THE WAY FEEL FREE TO EMAIL OR TEXT MESSAGE  
FOR ASSISTANCE

EMAIL: [NATE@PBFAB.COM](mailto:NATE@PBFAB.COM)

TEXT: 480-310-9847