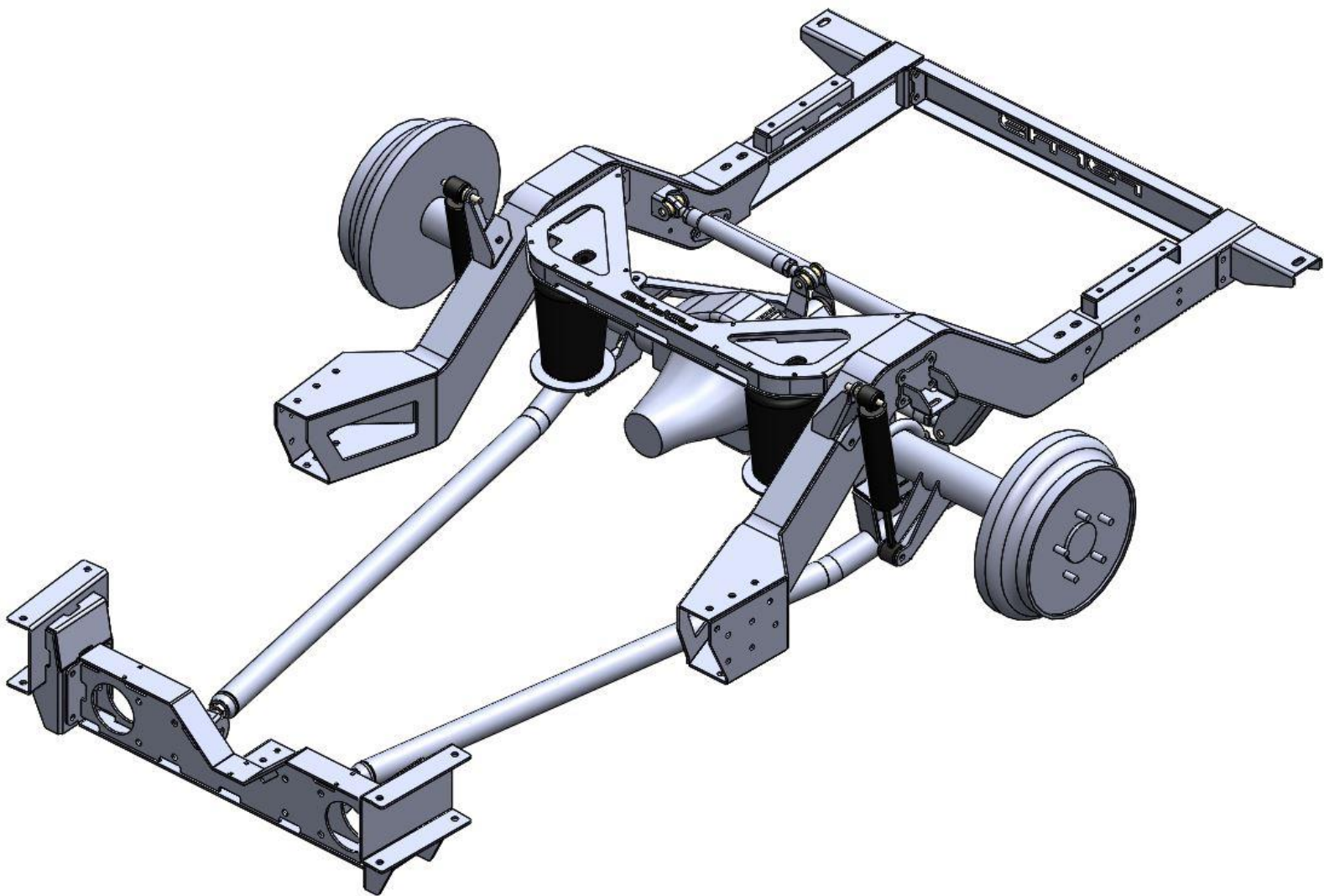


PBFAB DROPMEMBER REAR

47-54 LEVEL 3 AIRBAG

INSTALL GUIDE

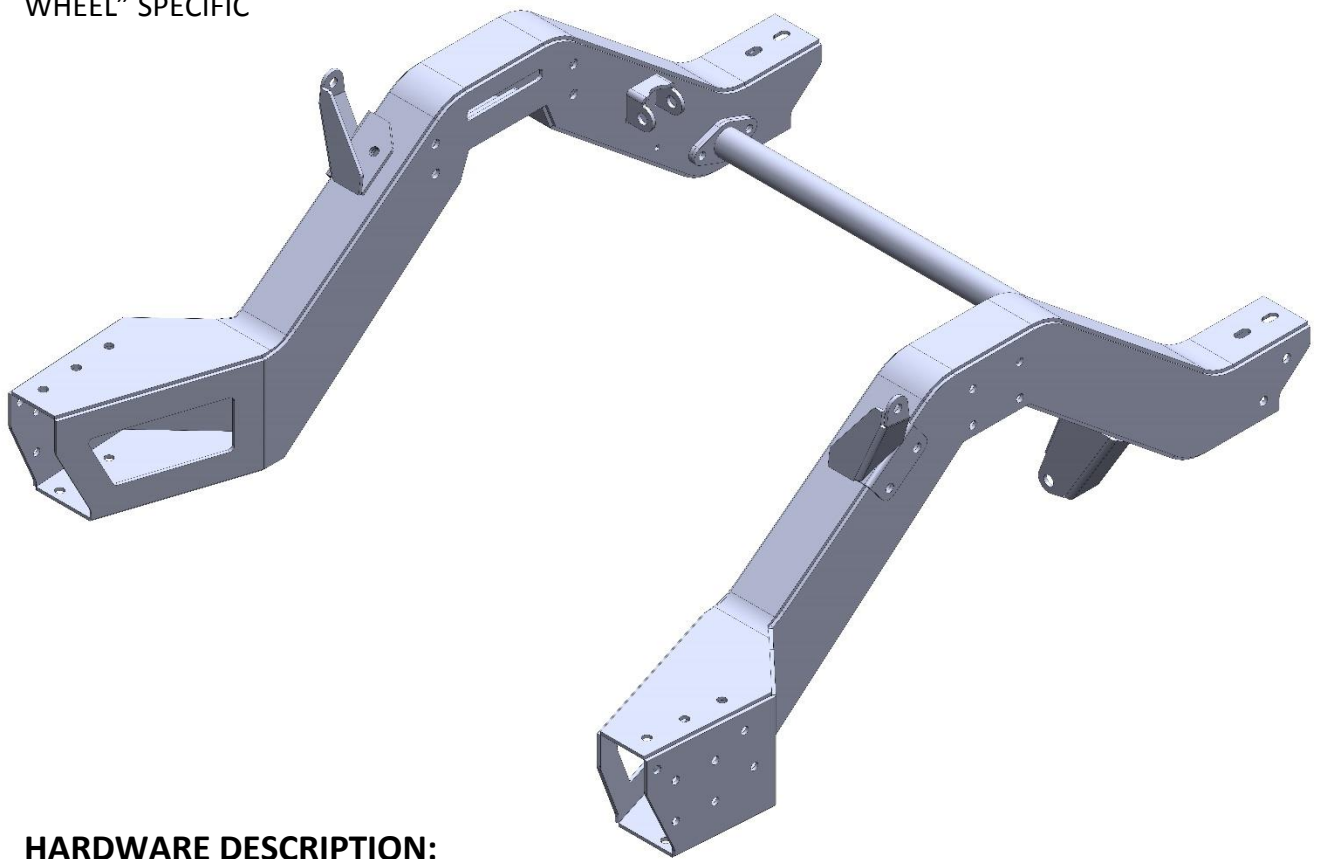


SECTION 1: INDIVIDUAL COMPONENTS WITH HARDWARE DESCRIPTIONS

*****HARDWARE BAGS WILL HAVE A LABEL WITH PART NUMBER THAT CORRELATE TO EACH PART*****

PART# RN4754-3-B-WL-WW

DESCRIPTION: REAR NOTCH 47-54 LEVEL 3; BOLT IN; WATTS LINK COMPATIBLE; "WIDE WHEEL" SPECIFIC



HARDWARE DESCRIPTION:

7/16 X 1.25 GRADE 8 BOLT USS (QTY. 32)

7/16 X 1.5 GRADE 8 BOLT USS (QTY. 4) ***REAR NOTCH X-MEMBER HARDWARE***

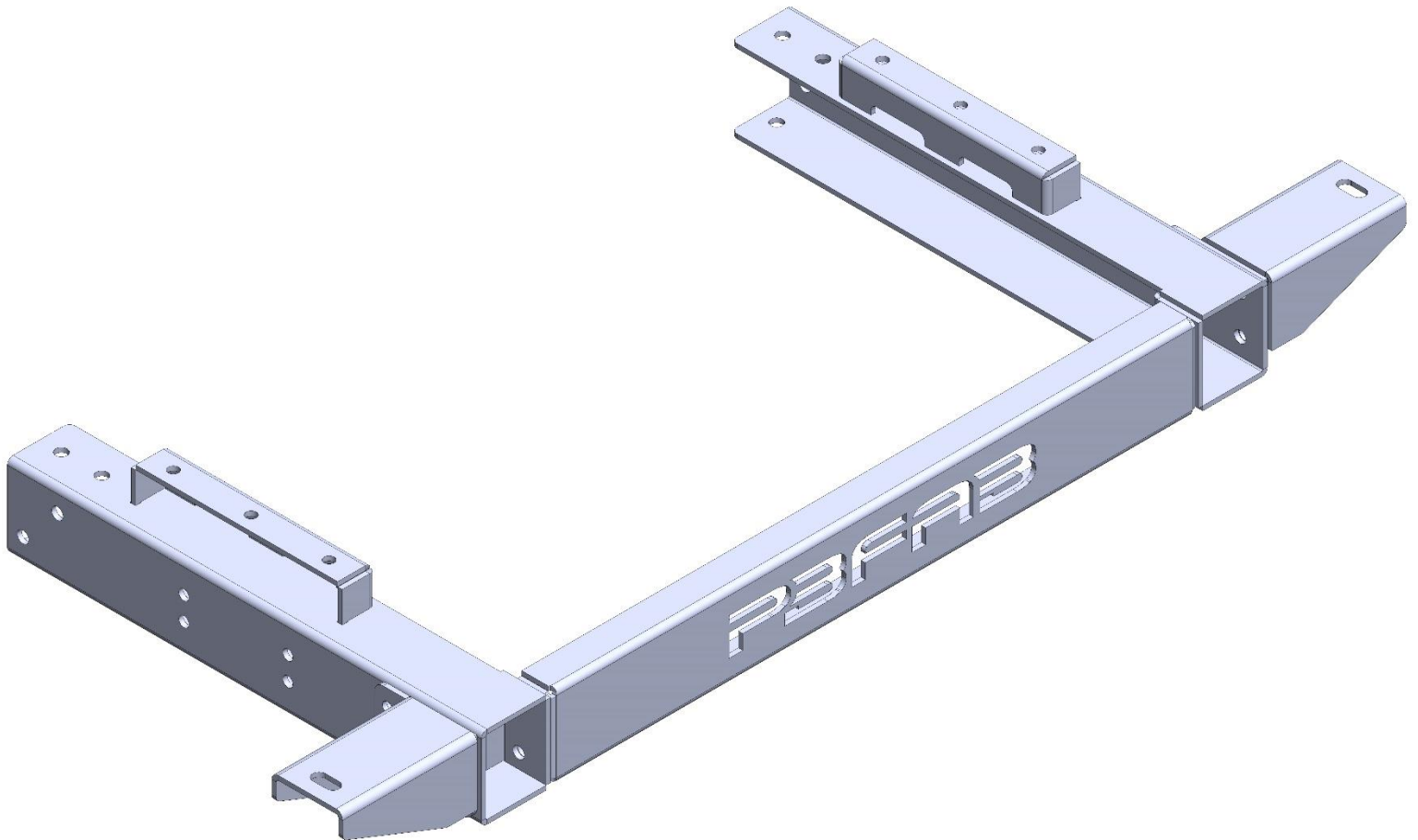
7/16 GRADE 8 NYLOC NUT (QTY. 26)

7/16 GRADE 8 LOCK WASHER USS (QTY. 10)

3/8 GRADE 8 FLAT WASHER USS (QTY. 62)

PART# RFR4754-3-B-WW

DESCRIPTION: REAR FRAME ASSEMBLY; 47-54 GM; LEVEL 3 WIDE WHEEL NOTCH SPECIFIC



HARDWARE DESCRIPTION:

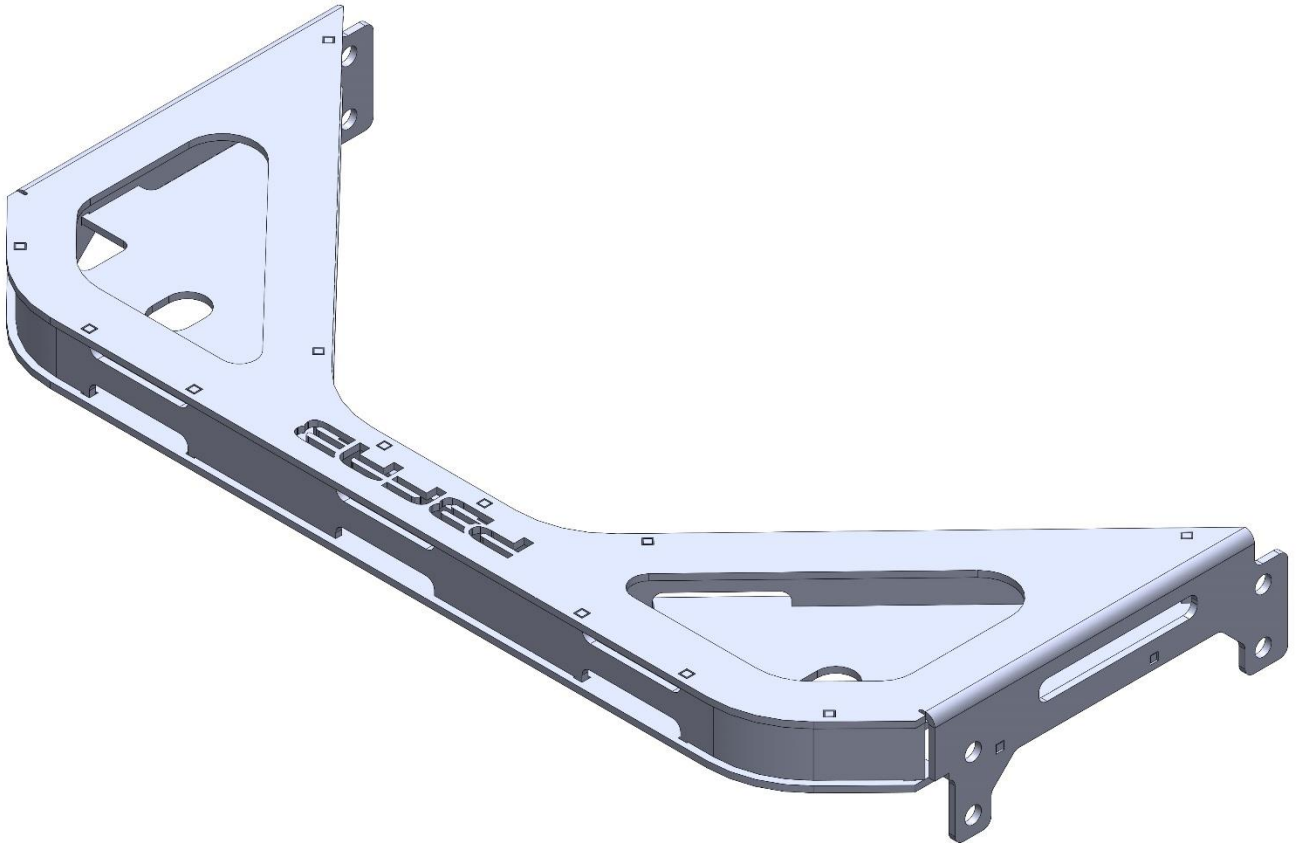
7/16 X 1.25 GRADE 8 BOLT USS (QTY. 22)

7/16 GRADE 8 NYLOC NUT USS (QTY. 22)

3/8 GRADE 8 FLAT WASHER USS (QTY. 44)

PART# BA7387-IB-OS

DESCRIPTION: BRIDGE ASSEMBLY; 73-87 C10 GM; INBOARD BAG; OUTBOARD SHOCK. (COMPATIBLE WITH MULTIPLE REAR KITS)



HARDWARE DESCRIPTION:

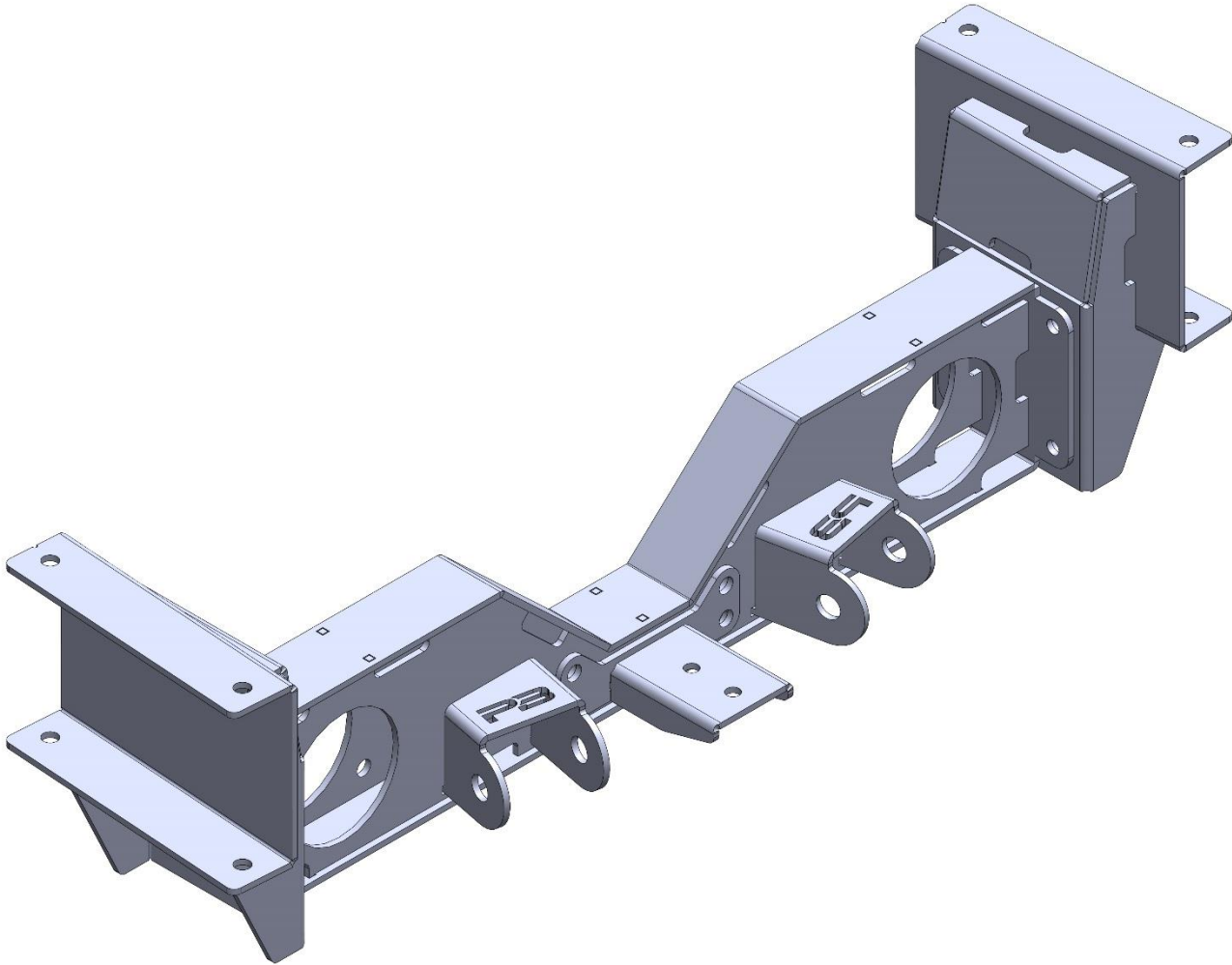
7/16 X 1.25 GRADE 8 BOLT USS (QTY. 8)

7/16 GRADE 8 LOCKWASHER (QTY. 8)

3/8 GRADE 8 FLAT WASHER (QTY. 8)

PART# TAXM4754-WW

DESCRIPTION: TRAILING ARM CROSS MEMBER 47-54 WIDE WHEEL NOTCH SPECIFIC



HARDWARE DESCRIPTION:

7/16 X 1.25 GRADE 8 BOLT USS (QTY. 20)

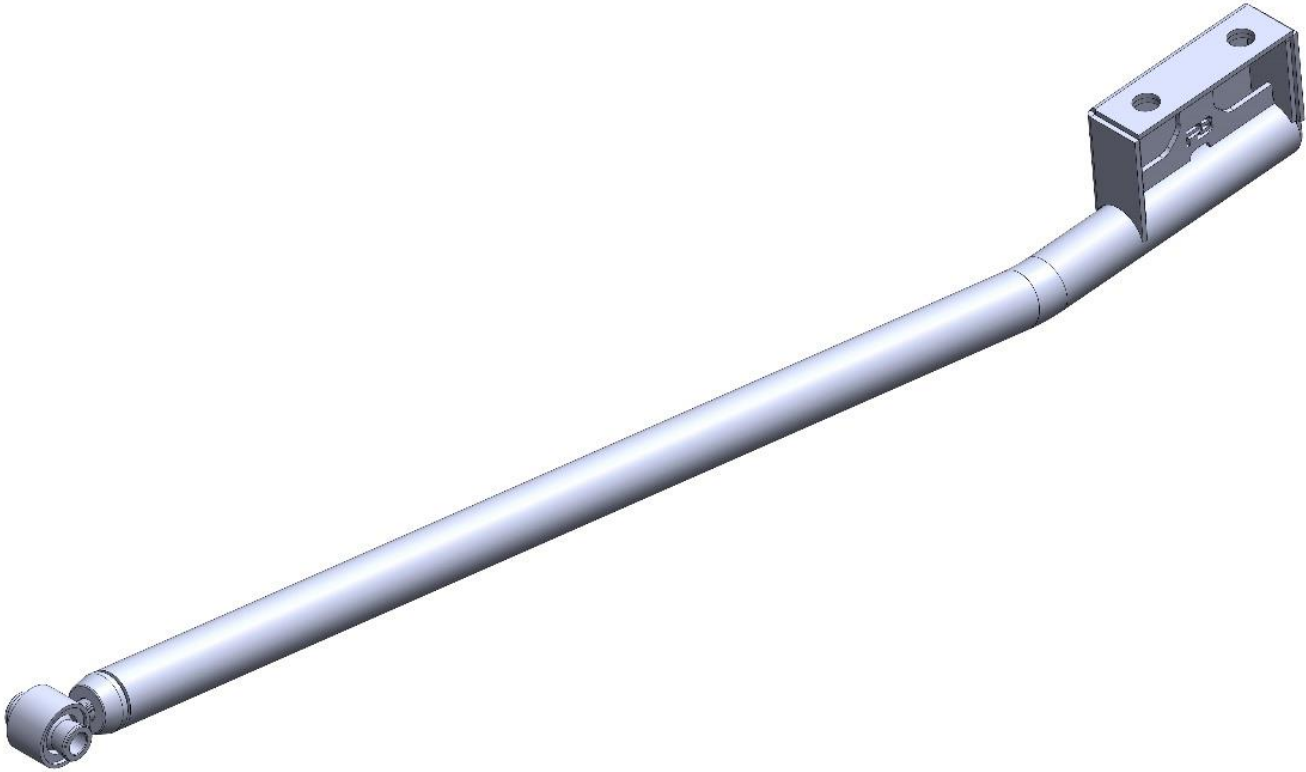
7/16 GRADE 8 NYLOC NUT (QTY. 16)

7/16 GRADE 8 LOCK WASHER USS (QTY. 4)

3/8 GRADE 8 FLAT WASHER USS (QTY. 36)

PART# TA-3-WL

DESCRIPTION: TRAILING ARM; 3 INCH DROP; WATTS LINK SPECIFIC



HARDWARE DESCRIPTION:

3/4 X 4.5 GRADE 8 BOLT SAE (FINE THREAD) (QTY. 2)

3/4 GRADE 8 FLAT WASHER (QTY. 4)

3/4 GRADE 8 NYLOC NUT SAE (FINE THREAD) (QTY. 6)

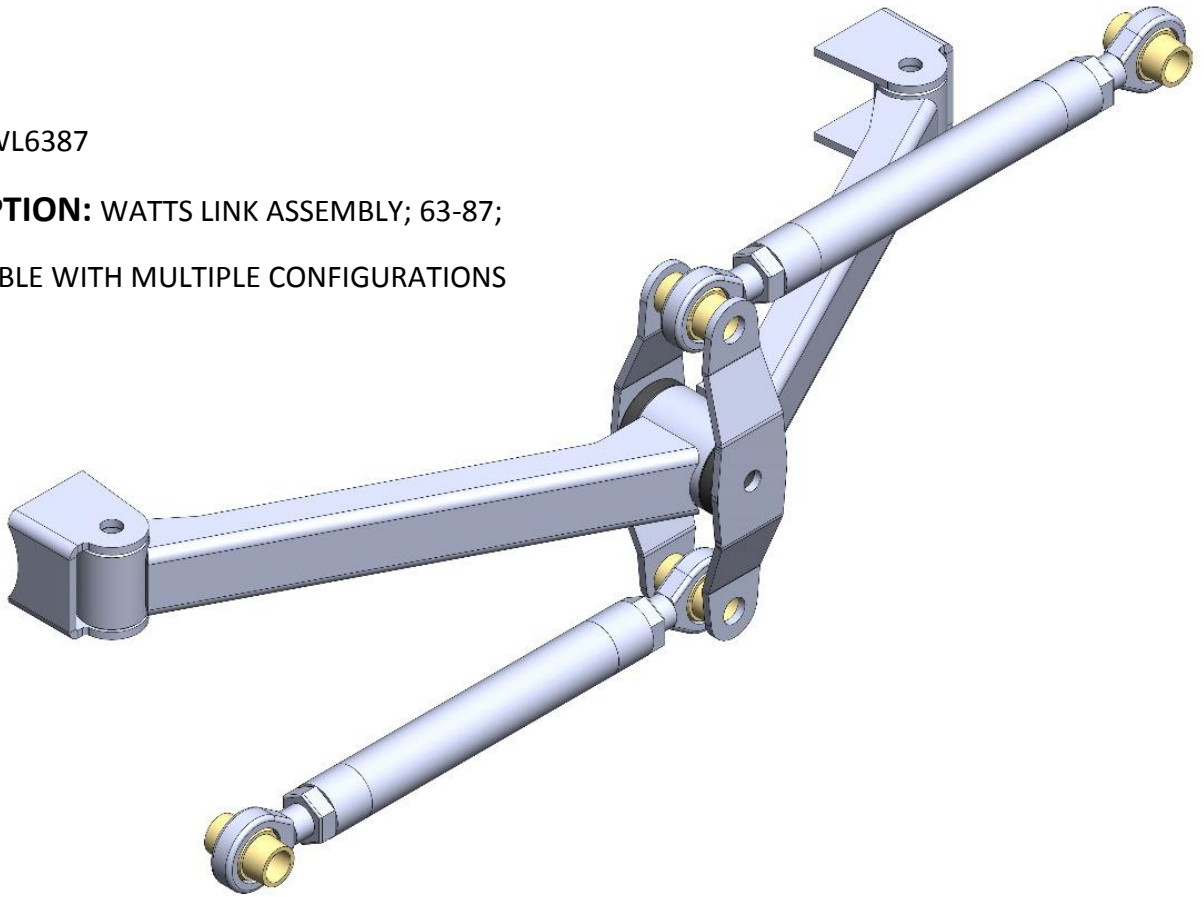
3/4 DEL SPHERE JOINT (QTY. 2)

3/4 ALUMINUM CONE SPACER (QTY. 4)

3/4 U-BOLT WITH NUTS AND WASHERS (PAIR)

PART# WL6387

DESCRIPTION: WATTS LINK ASSEMBLY; 63-87;
COMPATIBLE WITH MULTIPLE CONFIGURATIONS



HARDWARE DESCRIPTION:

1/2 X 3.25 GRADE 8 BOLT USS (QTY. 2)

1/2 X 4 GRADE 8 BOLT USS (QTY. 1)

1/2 GRADE 8 NYLOC NUT USS (QTY. 3)

7/16 GRADE 8 FLAT WASHER USS (QTY. 6)

5/8 X 3.25 GRADE 8 BOLT USS (QTY. 4)

5/8 GRADE 8 NYLOC NUT USS (QTY. 4)

5/8 GRADE 8 FLAT WASHER SAE (QTY. 8)

PHB CONE SPACERS (CS10) (QTY. 8)

3/4 X 5/8 RH ROD END WITH JAM NUT (QTY. 2)

3/4 X 5/8 LH ROD END WITH JAM NUT (QTY. 2)

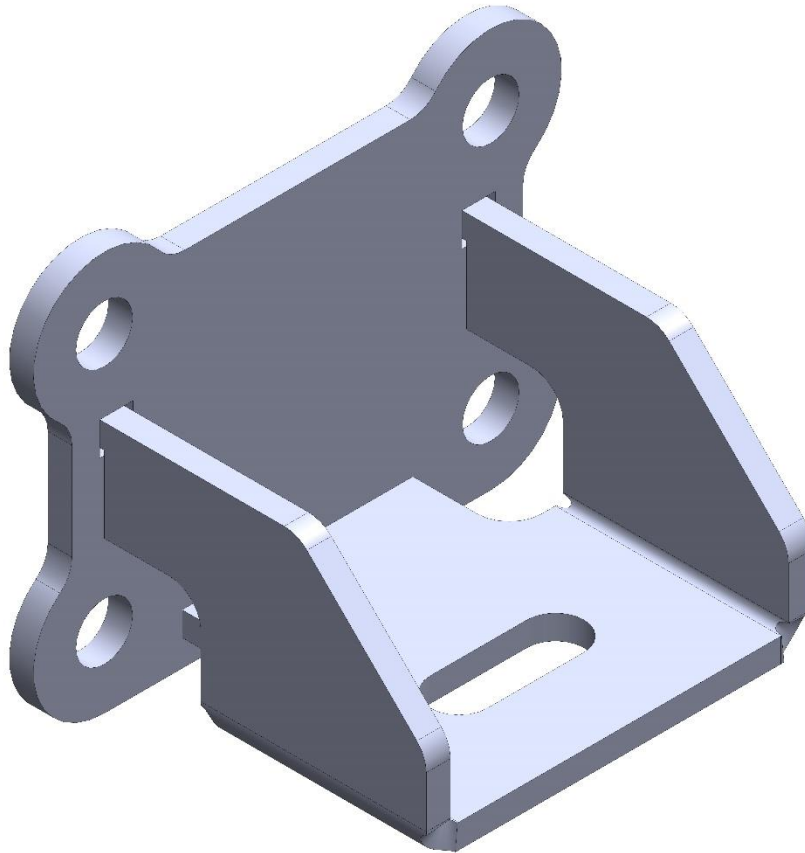
DM-V6 BUSHING HALF (QTY. 2)

DM-V6 CRUSH TUBES (QTY. 1)

ZERK FITTING (QTY. 1)

PART# BUMPSTOP-G

DESCRIPTION: BUMPSTOP BRACKET; COMES AS PAIR



HARDWARE DESCRIPTION:

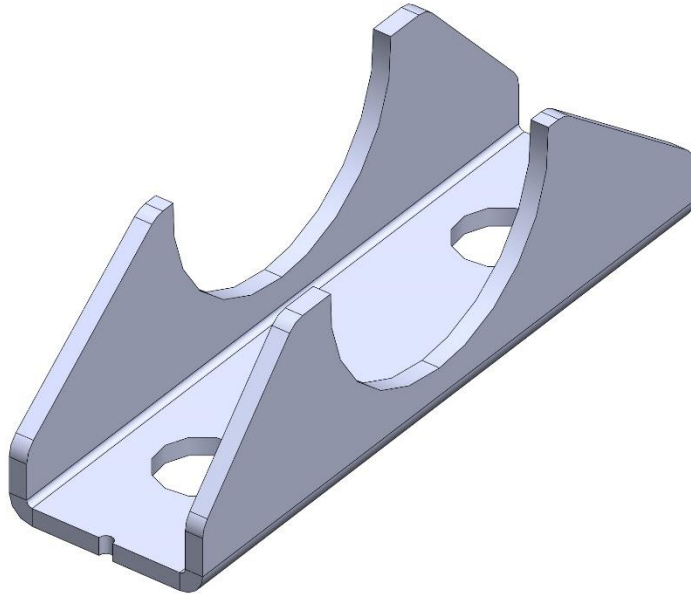
3/8 X 1.25 GRADE 8 BOLT USS (QTY. 8)

3/8 GRADE 8 LOCKWASHER USS (QTY. 8)

3/8 GRADE 8 FLAT WASHER USS (QTY. 8)

PART# TA-AP-3-2415

DESCRIPTION: TRAILING ARM AXLE PADS 3" AXLE TUBE DIAMETER; COMES AS MIRRORRED PAIR

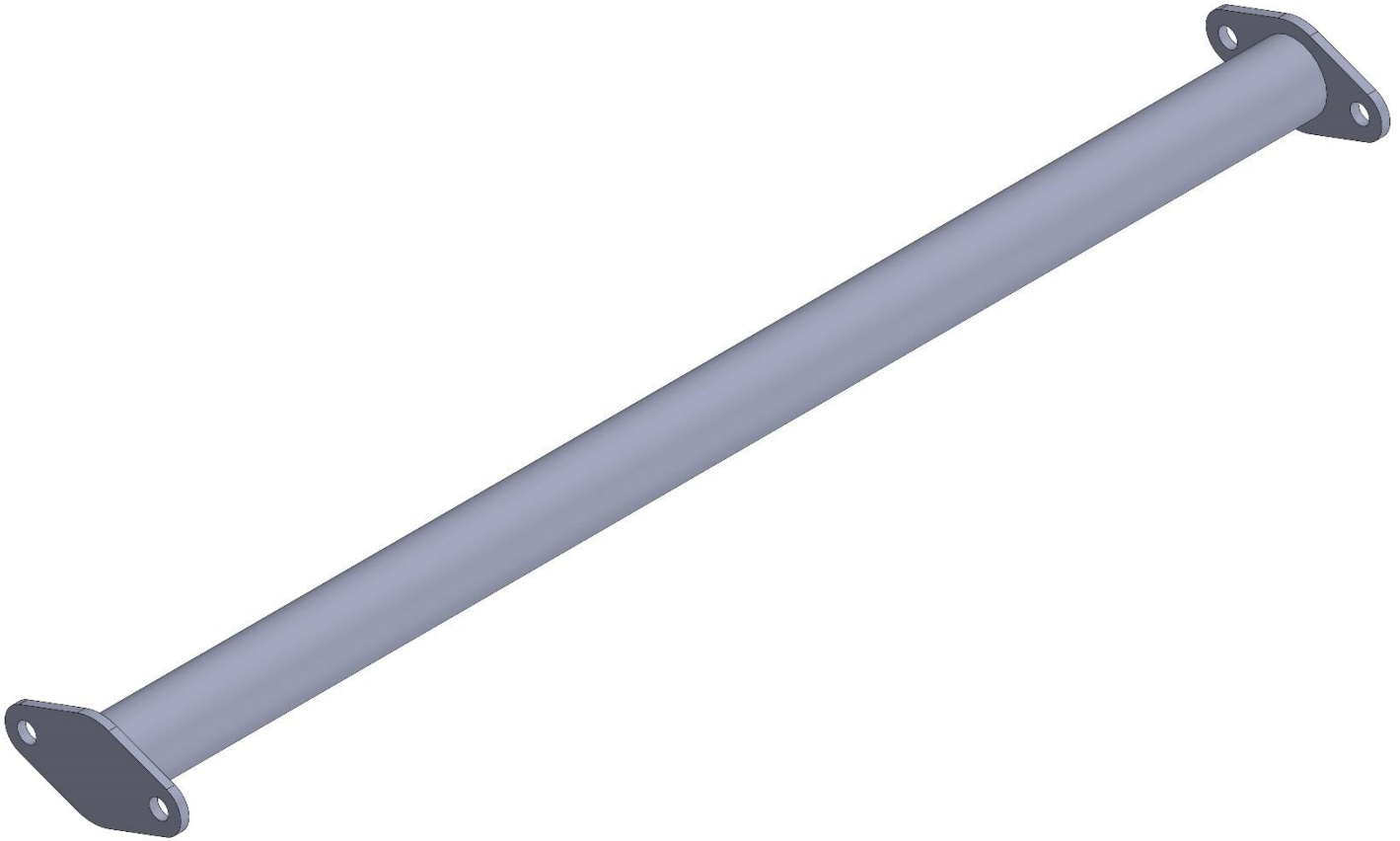


HARDWARE DESCRIPTION:

NO HARWDARE

PART# RNXM280

DESCRIPTION: REAR NOTCH CROSS MEMBER 28 INCHES OVERALL LENGTH

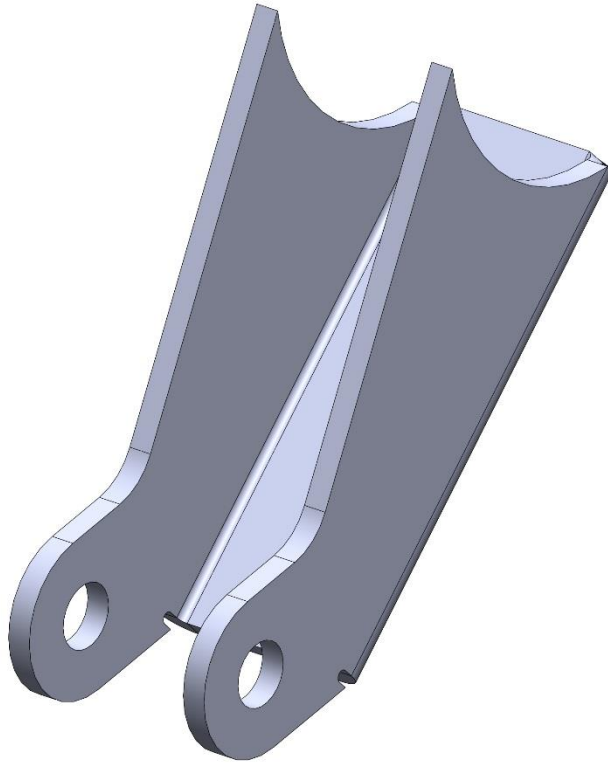


HARDWARE DESCRIPTION:

NO HARDWARE

PART# LSM4754-WW

DESCRIPTION: LOWER SHOCK MOUNT 47-54 GM "WIDE WHEEL" NOTCH COMPATIBLE

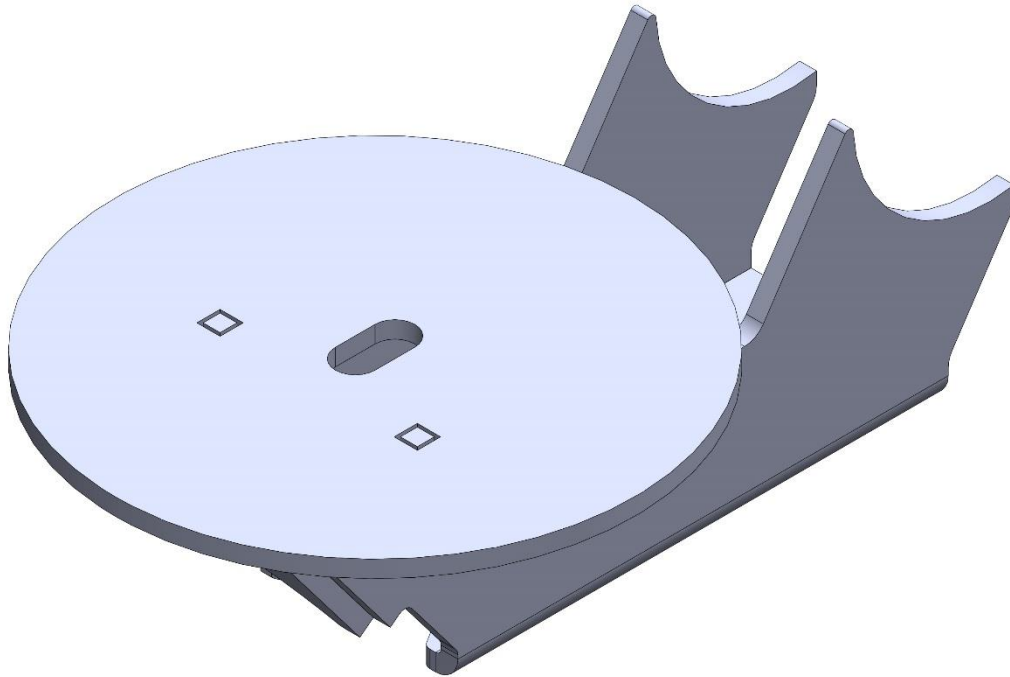


HARDWARE DESCRIPTION:

NO HARDWARE

PART# LBM-FMIB

DESCRIPTION: LOWER BAG MOUNT; FRONT MOUNT INBOARD CONFIGURATION



HARDWARE DESCRIPTION:

NO HARDWARE

*****KIT OPTION*****

PART# 1924426-KIT

DESCRIPTION: PB SHOCK KIT



HARDWARE DESCRIPTION:

KYB SHOCK PART# 344426 (QTY. 2)

SHOCK STUD KIT (QTY. 2)

1/2 X 2.5 GRADE 8 BOLT USS (QTY. 2)

1/2 GRADE 8 NYLOC NUT USS (QTY. 2)

7/16 GRADE 8 FLAT WASHER USS (QTY. 4)

SHOCK BOLT REDUCER BUSHING (S1-LSS) (QTY. 2)

*****KIT OPTION*****

PART# F9000-KIT

DESCRIPTION: FIRESTONE F9000 SLEEVED BAGS WITH HARDWARE



HARDWARE DESCRIPTION:

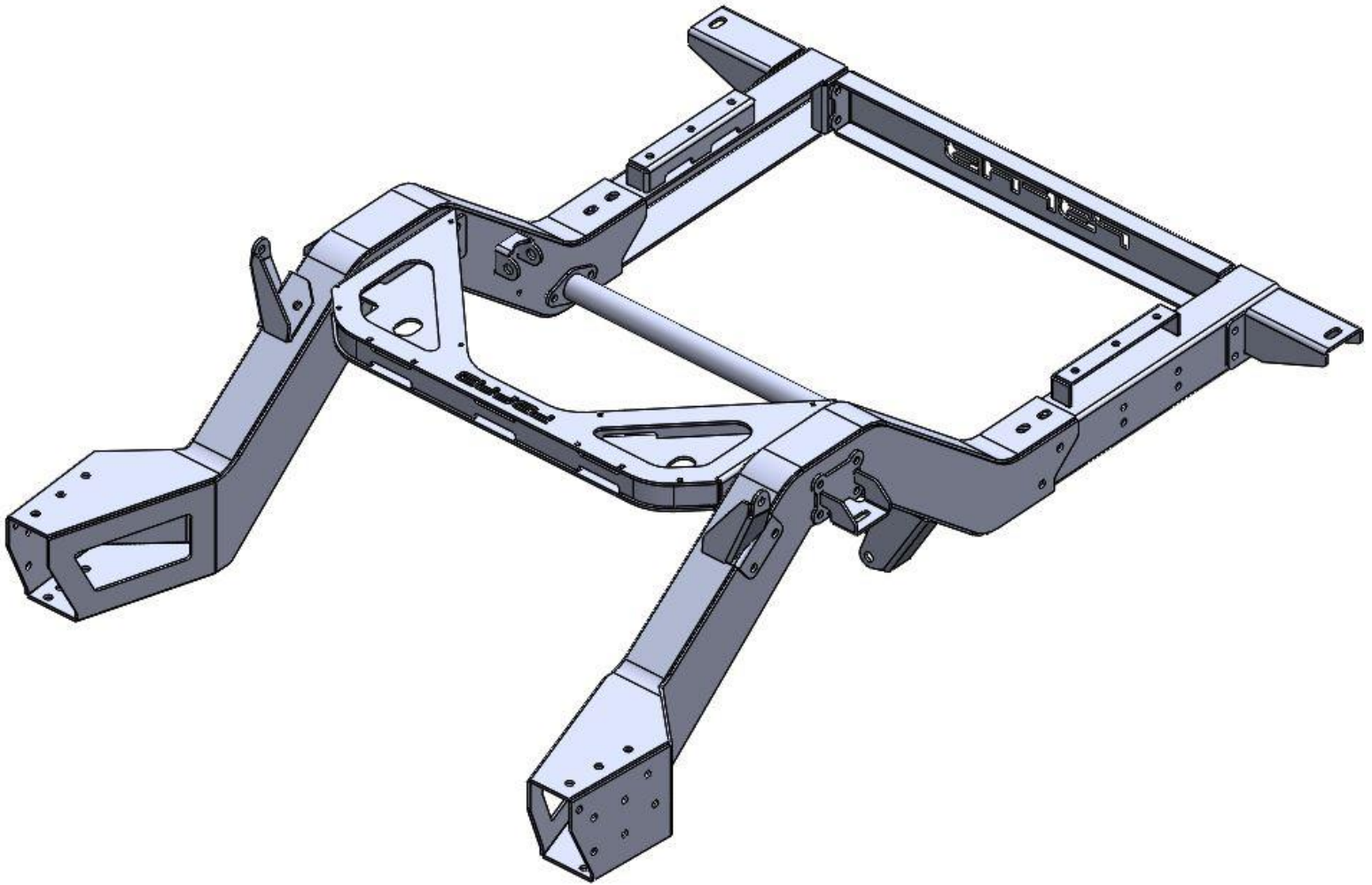
3/8 X .75 GRADE 8 BOLT USS (QTY. 6)

5/16 GRADE 8 FLAT WASHER USS (QTY. 6)

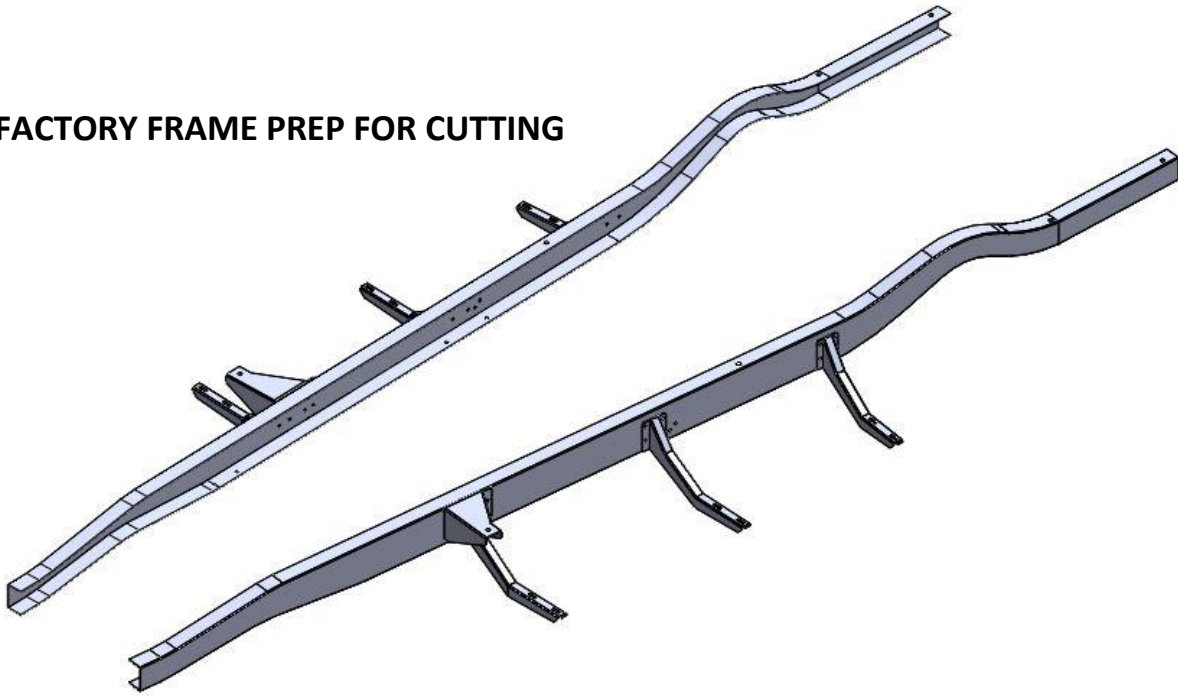
REAR NOTCH ASSEMBLY

-ASSEMBLE REAR NOTCHES, BRIDGE ASSEMBLY, REAR NOTCH CROSSMEMBER, REAR FRAME RAIL ASSEMBLIES, AND REAR FRAME CROSSMEMBER USING SUPPLIED GRADE 8 HARDWARE

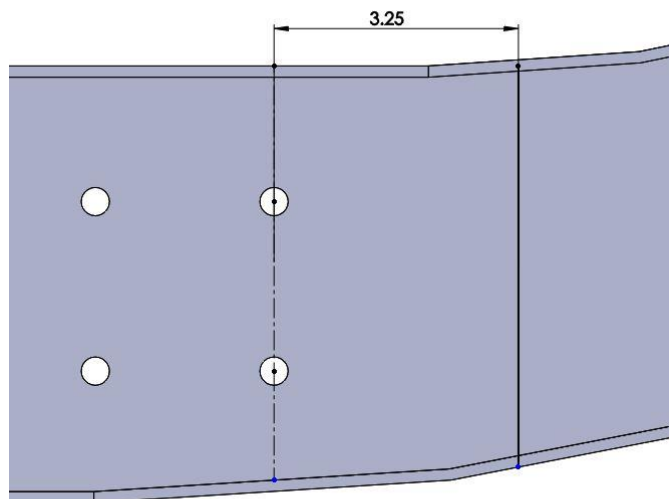
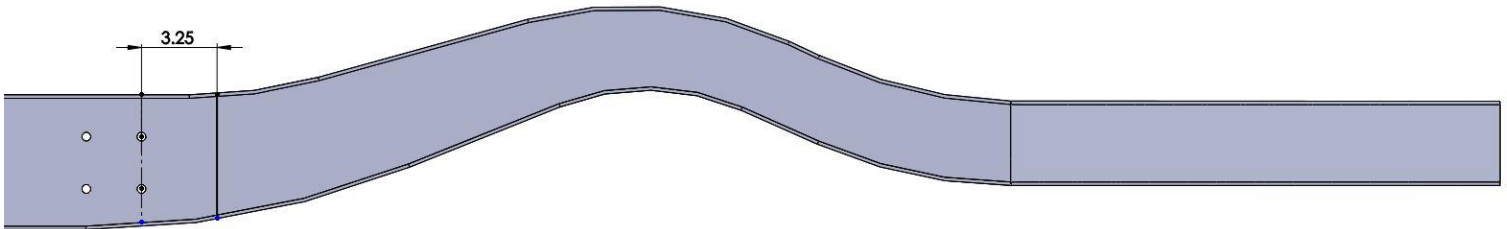
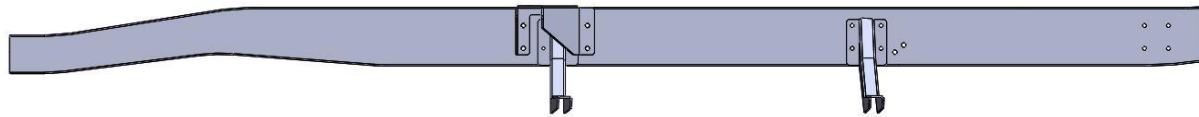
-DO NOT FULLY TIGHTEN AT THIS TIME



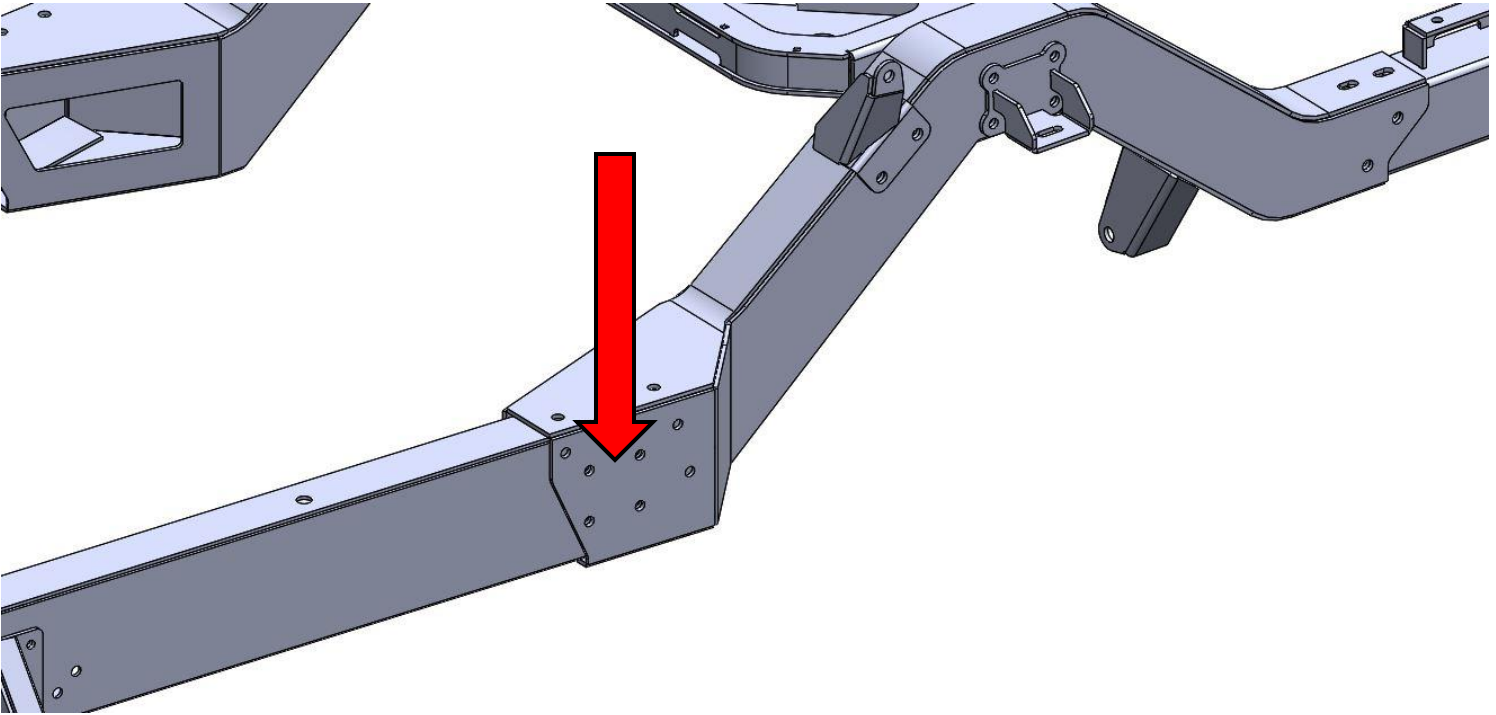
FACTORY FRAME PREP FOR CUTTING



-REMOVE REAR RUNNING BOARD BRACKET AND CUT REAR FRAME OFF 3.25 INCHES
REARWARD OF THE REAR MOUNTING HOLE CENTERLINE

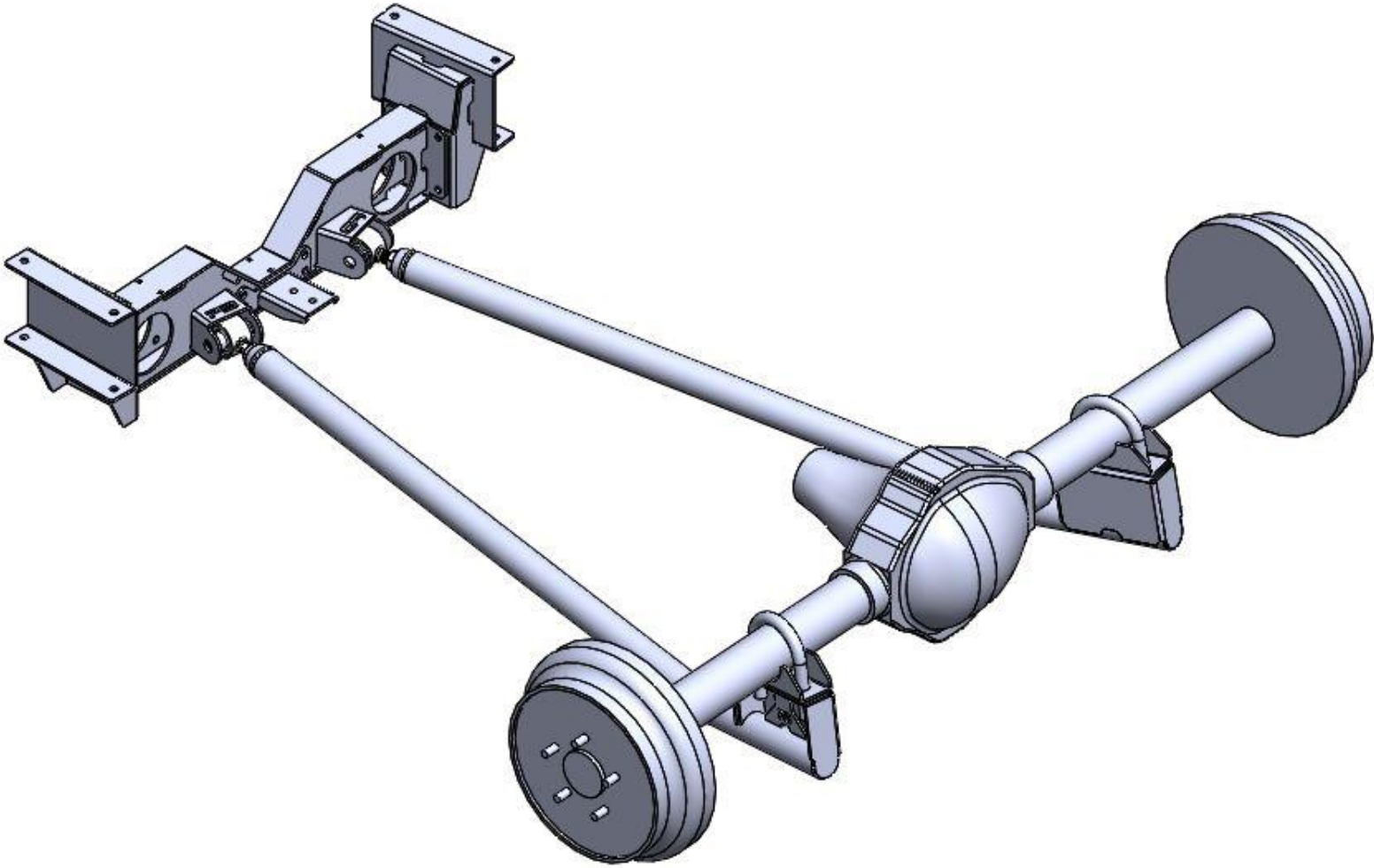


NOTCH ASSEMBLY TO FRAME INSTALLATION



- SLIDE REAR NOTCH ASSEMBLY OVER FACTORY FRAME RAILS
- REAR RUNNING BOARD MOUNTING HOLES WILL BE USED TO ALIGN REAR NOTCH
- ENSURE REAR NOTCH ASSEMBLY IS LEVEL AND SQUARE
- TIGHTEN AND TORQUE BRIDGE ASSEMBLY, REAR NOTCH CROSSMEMBER, REAR FRAME RAIL ASSEMBLIES, AND REAR FRAME CROSSMEMBER TO 65 FT LBS.
- ENSURE REAR NOTCH ASSEMBLY IS LEVEL AND SQUARE IN FRAME
- USE REAR NOTCH AS TEMPLATE TO DRILL MOUNTING HOLES IN FRAME
- BOLT REAR NOTCH ASSEMBLY TO FACTORY FRAME RAILS USING SUPPLIED GRADE 8 HARDWARE; TORQUE TO 65 FT LBS.

TRAILING ARM CROSSMEMBER INSTALLATION

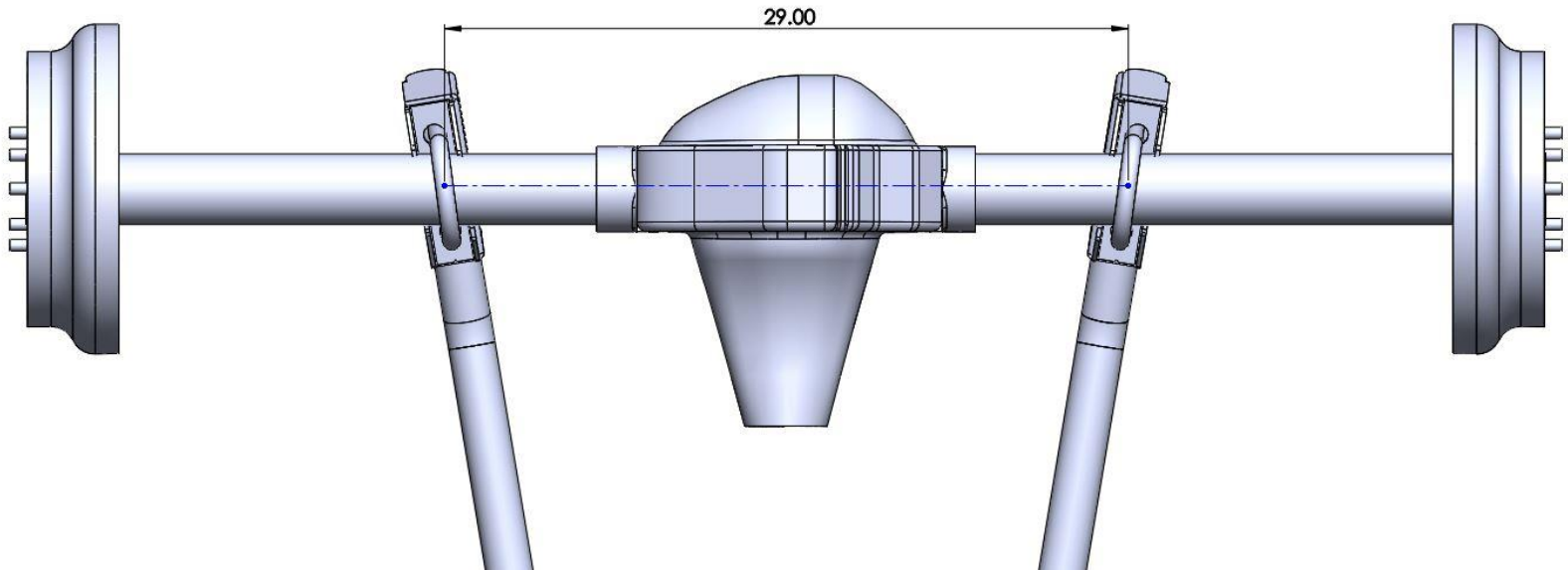


-IN ORDER TO ENSURE PROPER TRAILING ARM X-MEMBER LOCATION, IT WILL BE NECESSARY TO MOCK UP TRAILING ARMS AND REAR DIFFERENTIAL

-LEAVE APPROX 1/2 INCHES OF THREAD SHOWING ON DEL SPHERE JOINT TO TRAILING ARM THREADED BUNG TO ALLOW SOME FINE TUNE ADJUSTMENTS

(CONTINUED ON NEXT PAGE)

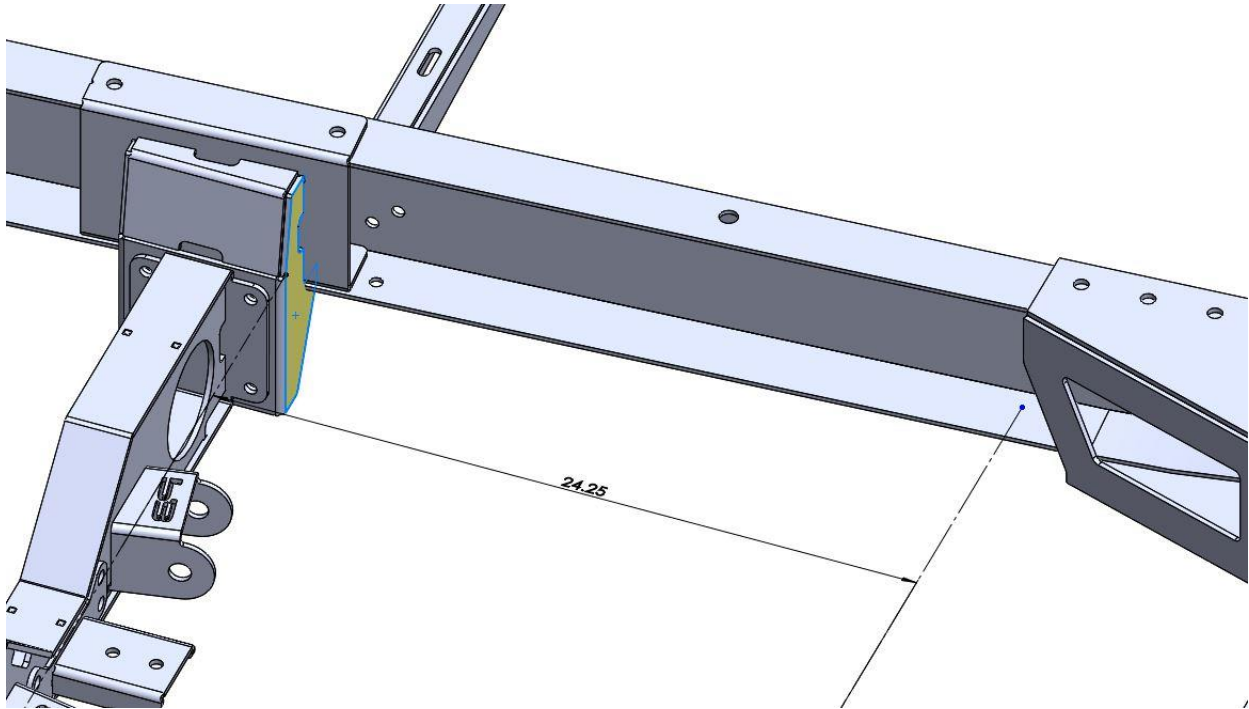
TRAILING ARM CROSSMEMBER INSTALLATION (CONTINUED)



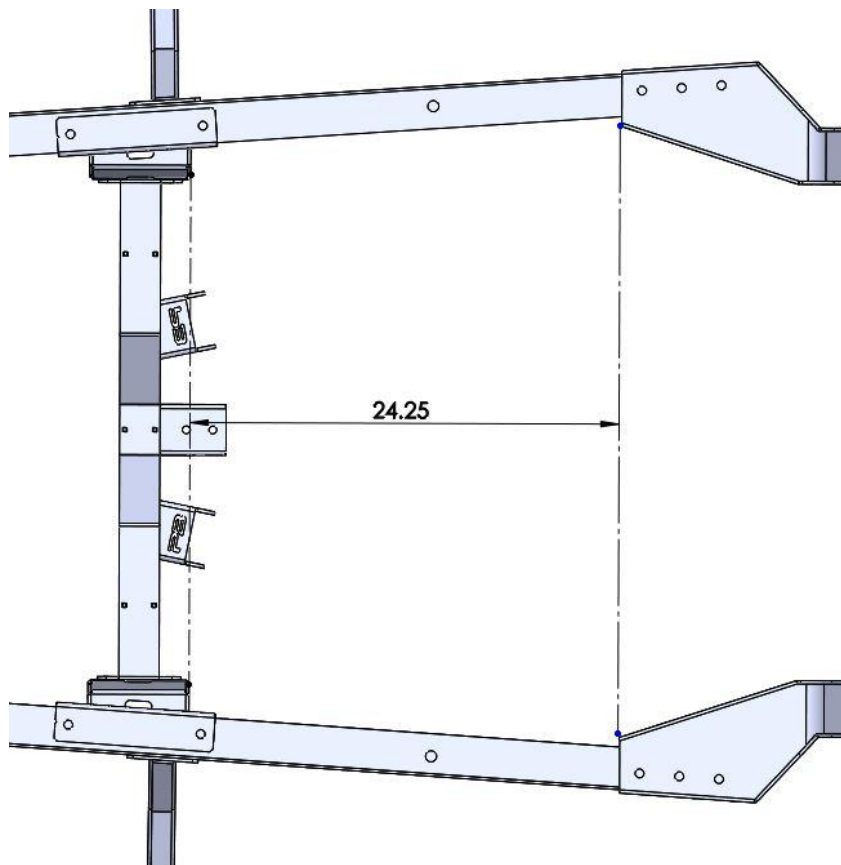
- MOCK UP TRAILING ARMS AND TRAILING ARM AXLE SADDLES ON REAR DIFFERENTIAL
 - SET DISTANCE BETWEEN UBOLT CENTERS AT 29 INCHES
 - SET THE DISTANCE BETWEEN THE TOP OF THE AXLE TUBE AND BOTTOM OF THE NOTCH TO 4 INCHES
 - SET THE PINION ANGLE TO ZERO
 - FOR MOCK UP INSTALLATION USE THE PLAIN LARGE NUTS IN THE TRAILING ARM HARWDARE KIT (USE THE GOLD ZINC NYLOC NUTS FOR FINAL ASSEMBLY)
 - TACK THE TRAILING ARM AXLE BRACKETS TO THE REAR END HOUSING
- ***DO NOT YET WELD TRAILING ARM AXLE SADDLES TO THE REAR DIFFERENTIAL*****

(CONTINUED ON NEXT PAGE)

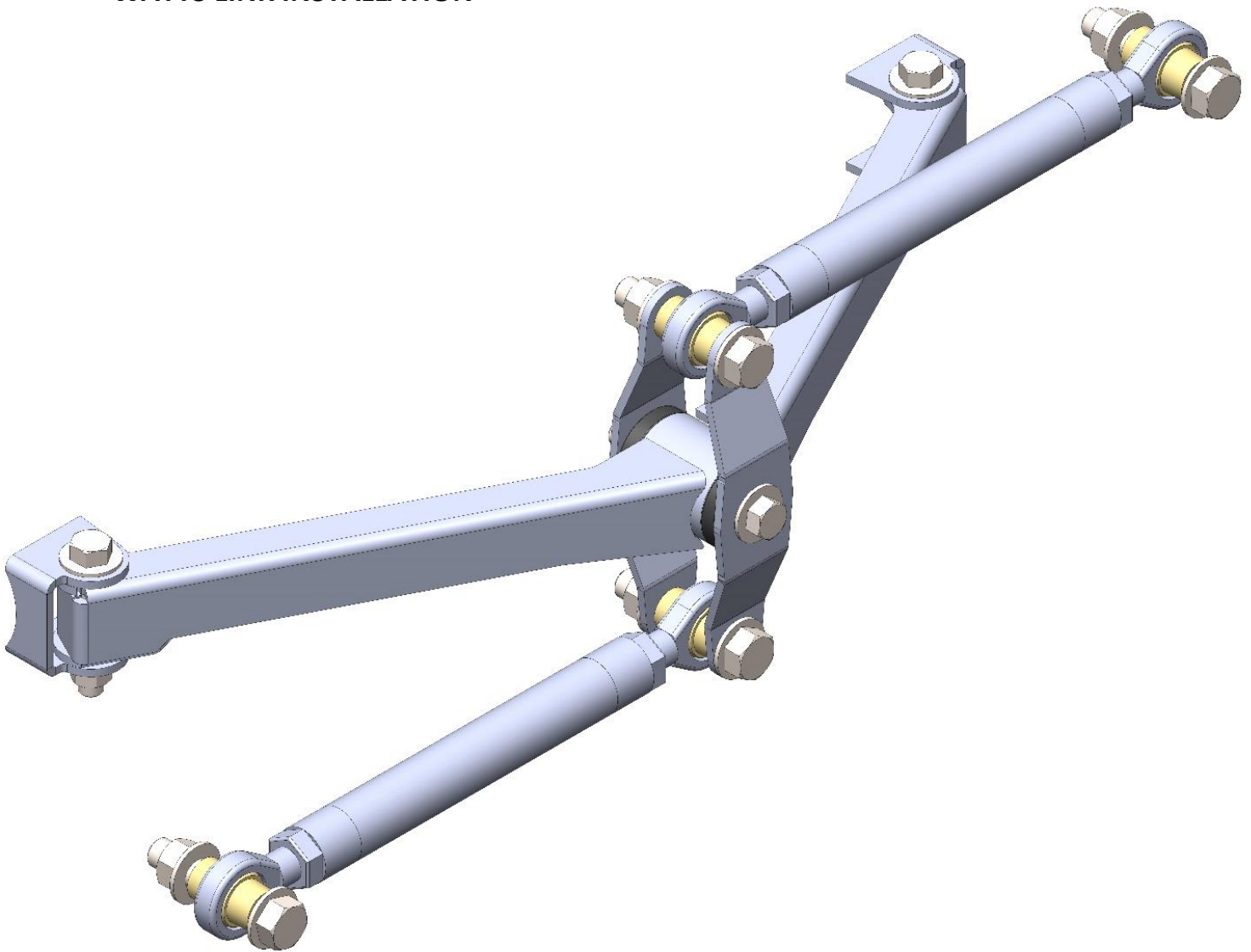
TRAILING ARM CROSSMEMBER INSTALLATION (CONTINUED)



FRONT EDGE OF TRAILING ARM CROSSMEMBER BRACKET (IN YELLOW) WILL SET 24.25 INCHES FORWARD OF THE NOTCHES FRONT EDGE (SEE PIC BELOW) MARK AND DRILL HOLES, INSTALL USING SUPPLIED GRADE 8 HARDWARE; TORQUE TO 65 FT LBS



WATTS LINK INSTALLATION

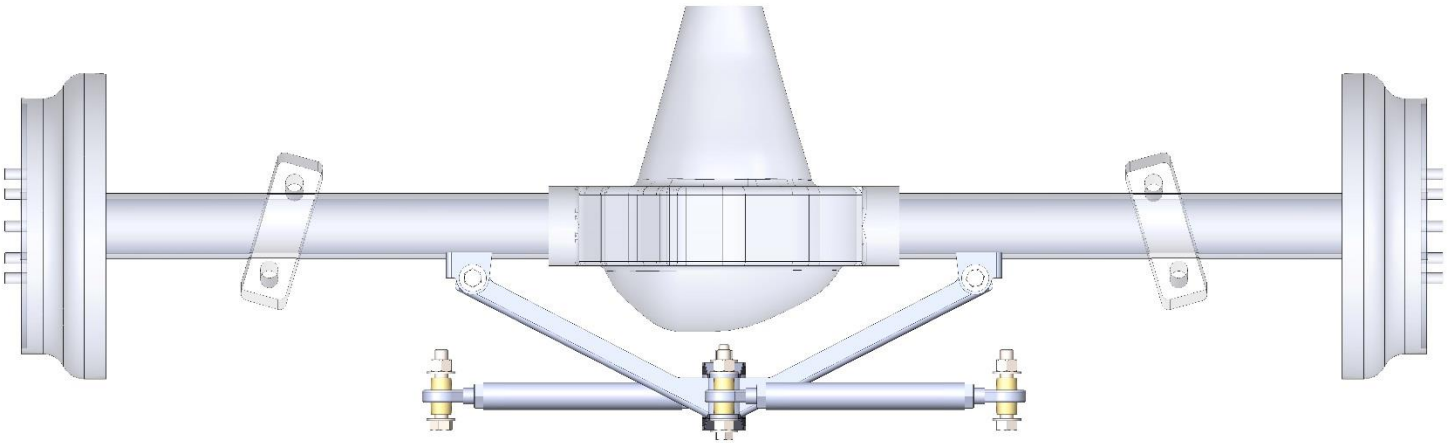


-REVIEW FOLLOWING IMAGES AND NOTES TO ENSURE PROPER INSTALLATION OF THE WATT'S LINK

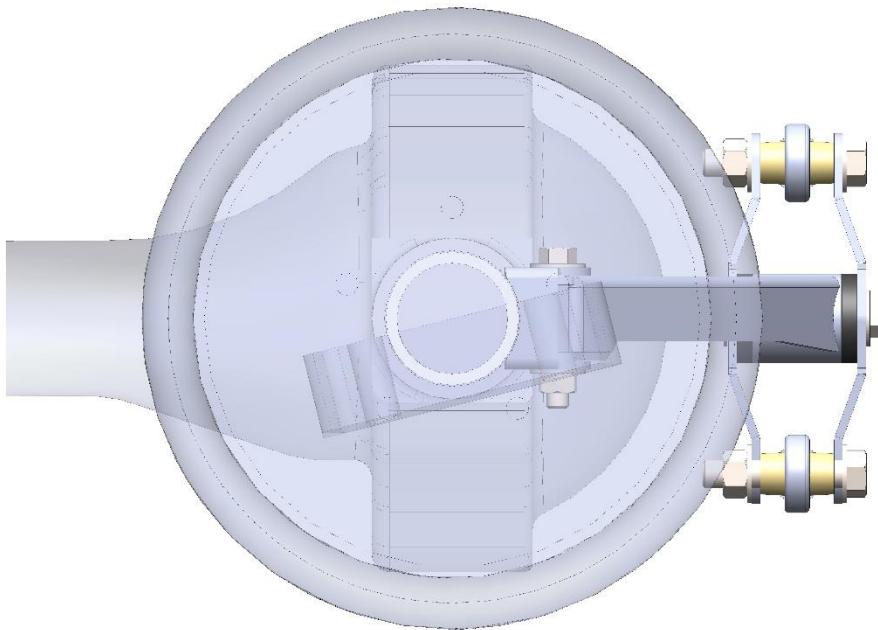
-USE AN ANTI-SEAZE TYPE THREAD LUBRICANT WHEN INSTALLING THE ROD ENDS INTO THE WATT'S LINK BARS; FAILURE TO DO SO COULD DAMAGE THE THREADS

(CONTINUED ON NEXT PAGE)

WATTS LINK INSTALLATION (CONTINUED)



-ENSURE THAT THE WATTS LINK ASSEMBLY IS CENTERED ON THE REAR DIFFERENTIAL

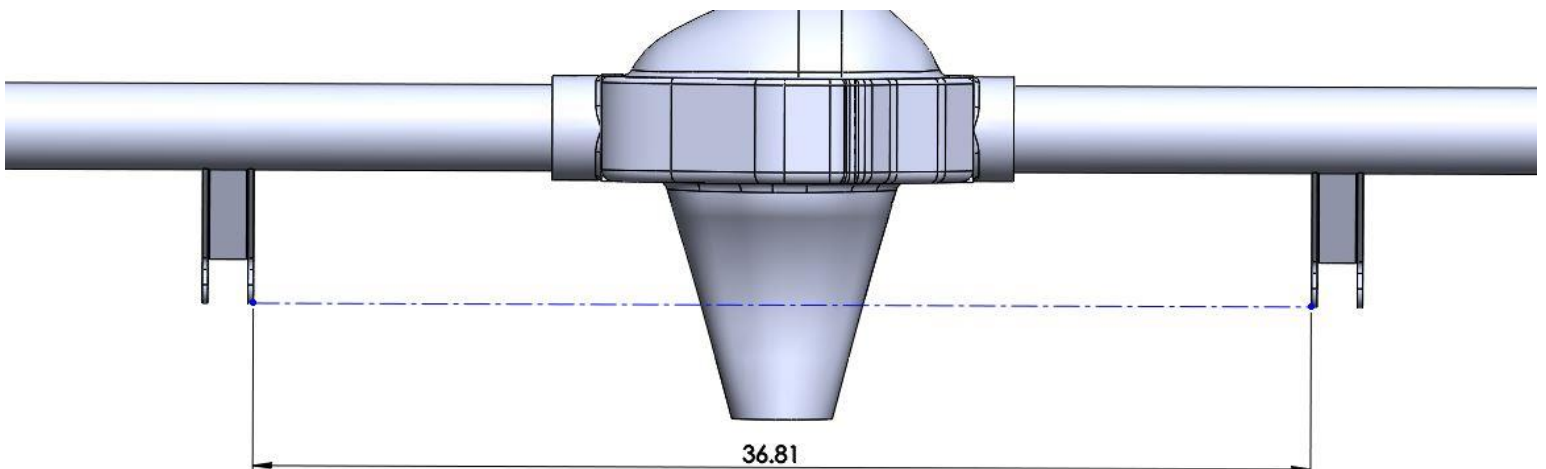
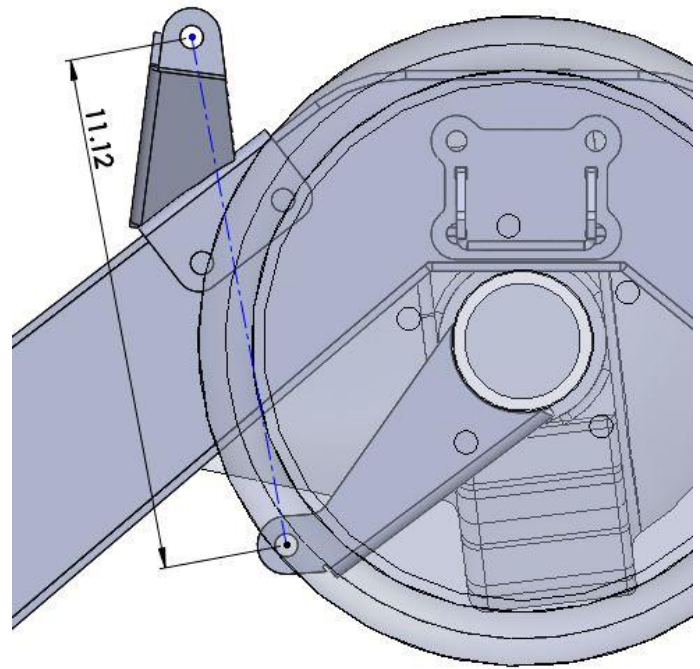
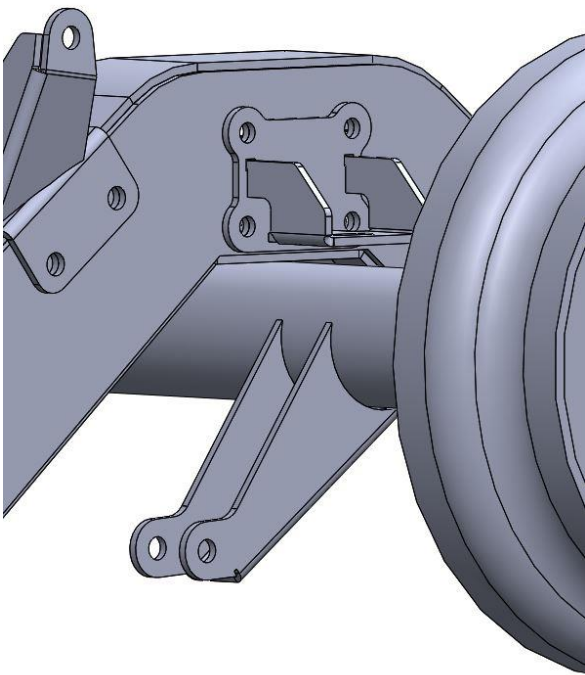


-ENSURE THAT THE WATTS LINK IS PERPENDICULAR TO THE GROUND AT RIDE HEIGHT; TACK THE MOUNTING BRACKETS IN PLACE

*****DO NOT YET FULLY WELD THE WATTS LINK MOUNTING BRACKETS*****

LOWER SHOCK MOUNTING BRACKET INSTALLATION

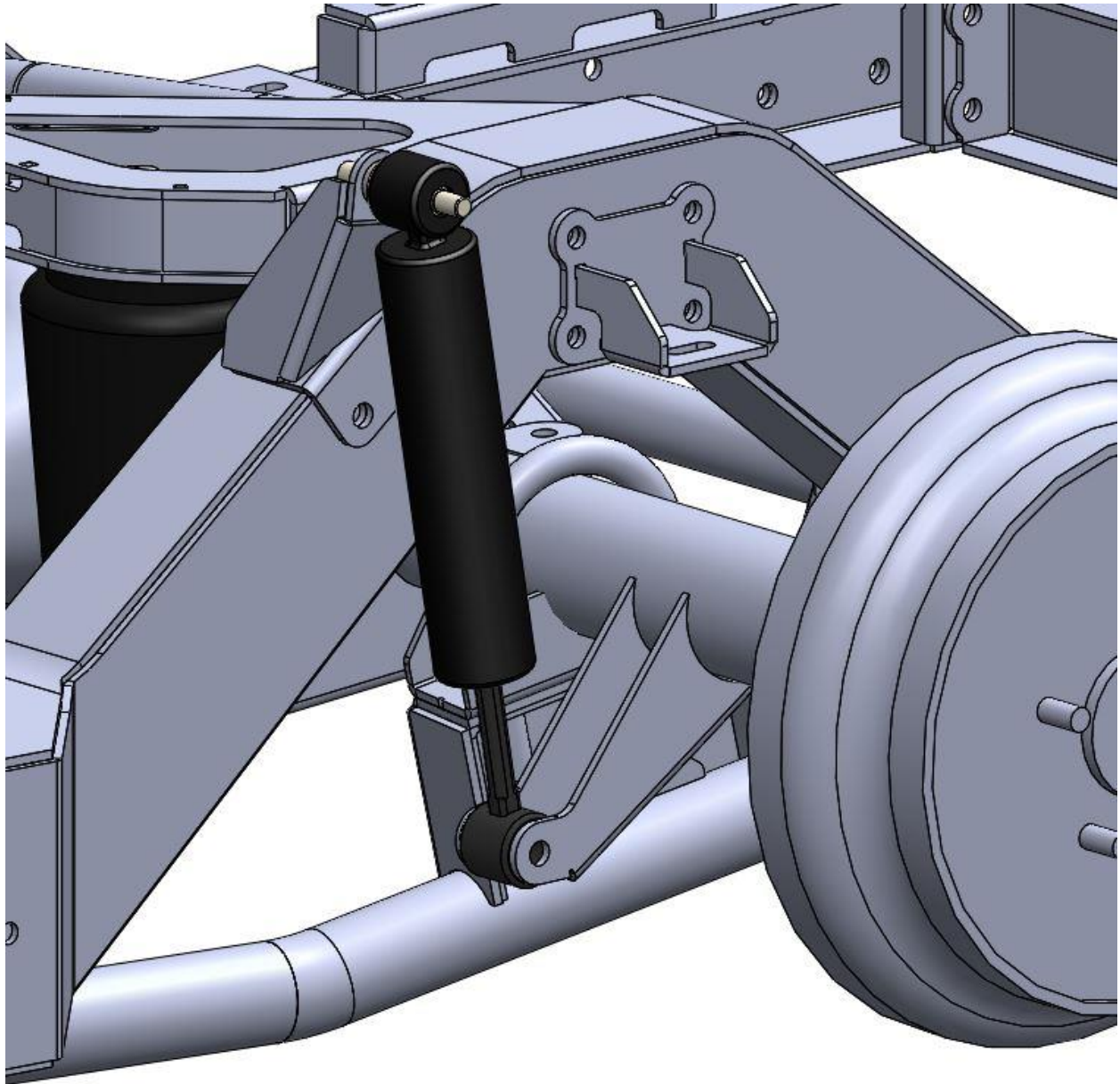
- MOCK UP REAR SUSPENSION SO THAT THE AXLE TUBE IS BOTTOMED OUT IN THE NOTCH
- SET DISTANCE BETWEEN UPPER SHOCK MOUNTING HOLE AND LOWER SHOCK MOUNTING HOLE TO 11.125 INCHES
- SET INSIDE TO INSIDE DISTANCE BETWEEN LOWER SHOCK MOUNTING BRACKETS TO 36.8125 INCHES
- TACK LOWER SHOCK MOUNTING BRACKETS AND TRAILING ARM MOUNTING PADS TO REAR DIFFERENTIAL



SHOCK INSTALLATION

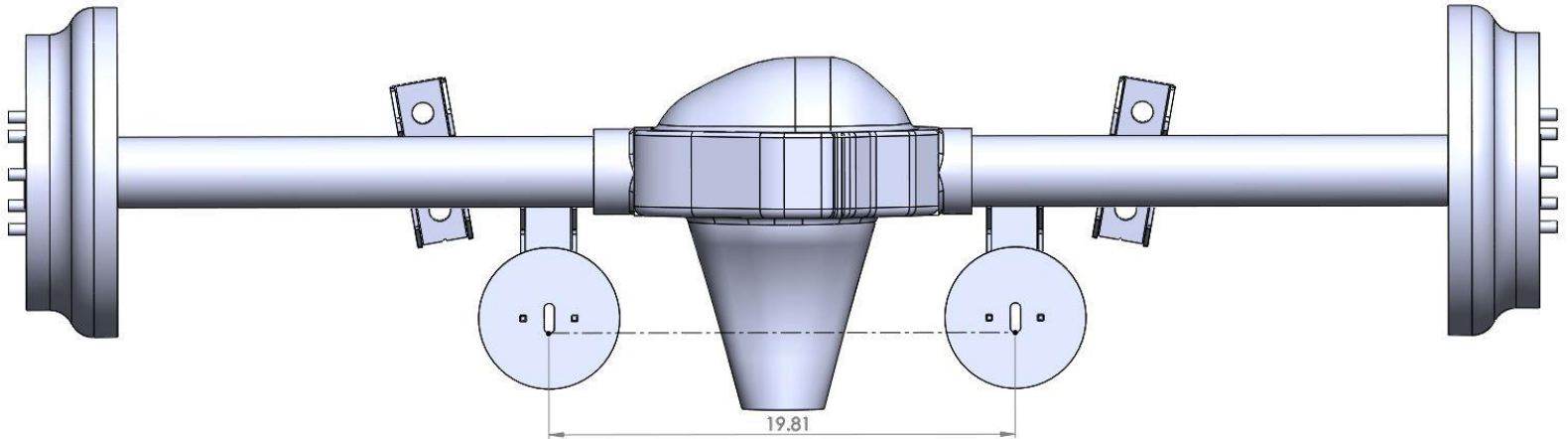
USE BELOW IMAGE TO REFERENCE FOR SHOCK INSTALLATION

SEE SHOCK KIT HARDWARE BREAK-OUT IN BEGINNING OF INSTALL GUIDE FOR SHOCK
HARDWARE ORIENTATION/INSTALLATION

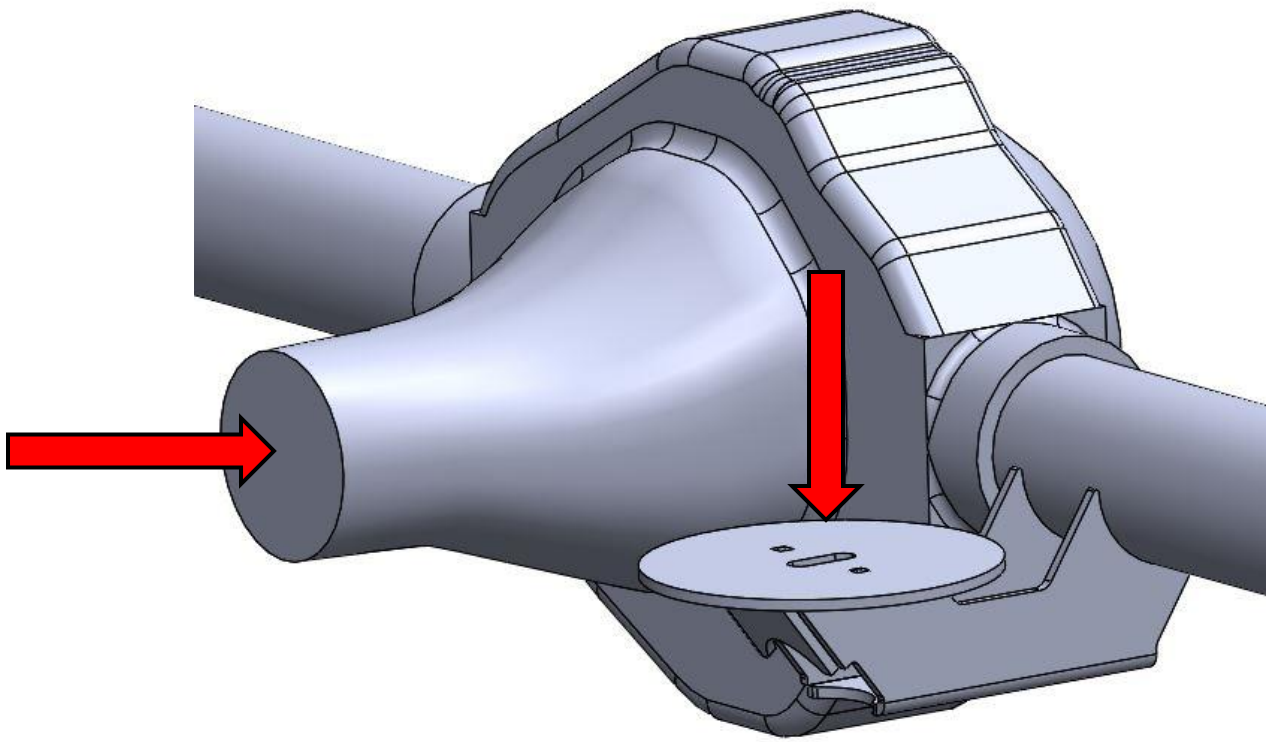


LOWER AIR BAG MOUNTING BRACKET INSTALLATION

ENSURE DISTANCE FROM CENTER TO CENTER OF LOWER BAG MOUNTING BRACKET CENTERLINES IS SET TO 19.8125 INCHES



SET THE LOWER AIRBAG BRACKETS' MOUNTING FACE PERPENDICULAR TO THE PINION



AIRBAG INSTALLATION

-INSTALLED VIEW OF PB AIRBAG KIT PART#F9000-KIT (INCLUDES FIRESTONE AIRSPRING AND MOUNTING HARDWARE**)**

*****DO NOT LET AXLE WEIGHT HANG ON AIRSPRING; CORRECT LENGTH SHOCK MUST BE INSTALLED TO ACT AS LIMITER. OVER EXTENSION OF REAR AIR SPRING WILL LEAD TO DAMAGE AND VOID ANY WARRANTY*****

*****MUST USE SUPPLIED 3/8 X .75 BOLTS, LOCKWASHER, AND FLAT WASHER WHEN INSTALLING REAR SLEEVED BAGS. LONGER BOLTS WILL DAMAGE AIRSPRING COMPOSITE ENDS AND VOID ANY WARRANTY*****



**-ENSURE THE FOLLOWING STEPS ARE TAKEN BEFORE FULLY WELDING
MOUNTING BRACKETS ATTACHED TO THE AXLE:**

-CONFIRM AND ADJUST DRIVE-LINE ANGLES IF NECESSARY

-CYCLE SUSPENSION MULTIPLE TIMES THROUGH ITS TRAVEL WITH ALL
COMPONENTS MOCKED UP TO ENSURE NO BINDING OR CLEARANCE ISSUES ARE
PRESENT

-CHECK AGAIN AND AGAIN.... MEASURE 100 MORE TIMES....

-THE MOUNTING BRACKETS ATTACHED TO THE REAR DIFFERENTIAL MAY NOW BE
FULLY WELDED 😊

FOR ANY TECH HELP ALONG THE WAY FEEL FREE TO EMAIL OR TEXT MESSAGE
FOR ASSISTANCE

EMAIL: NATE@PBFAB.COM

TEXT: 480-310-9847