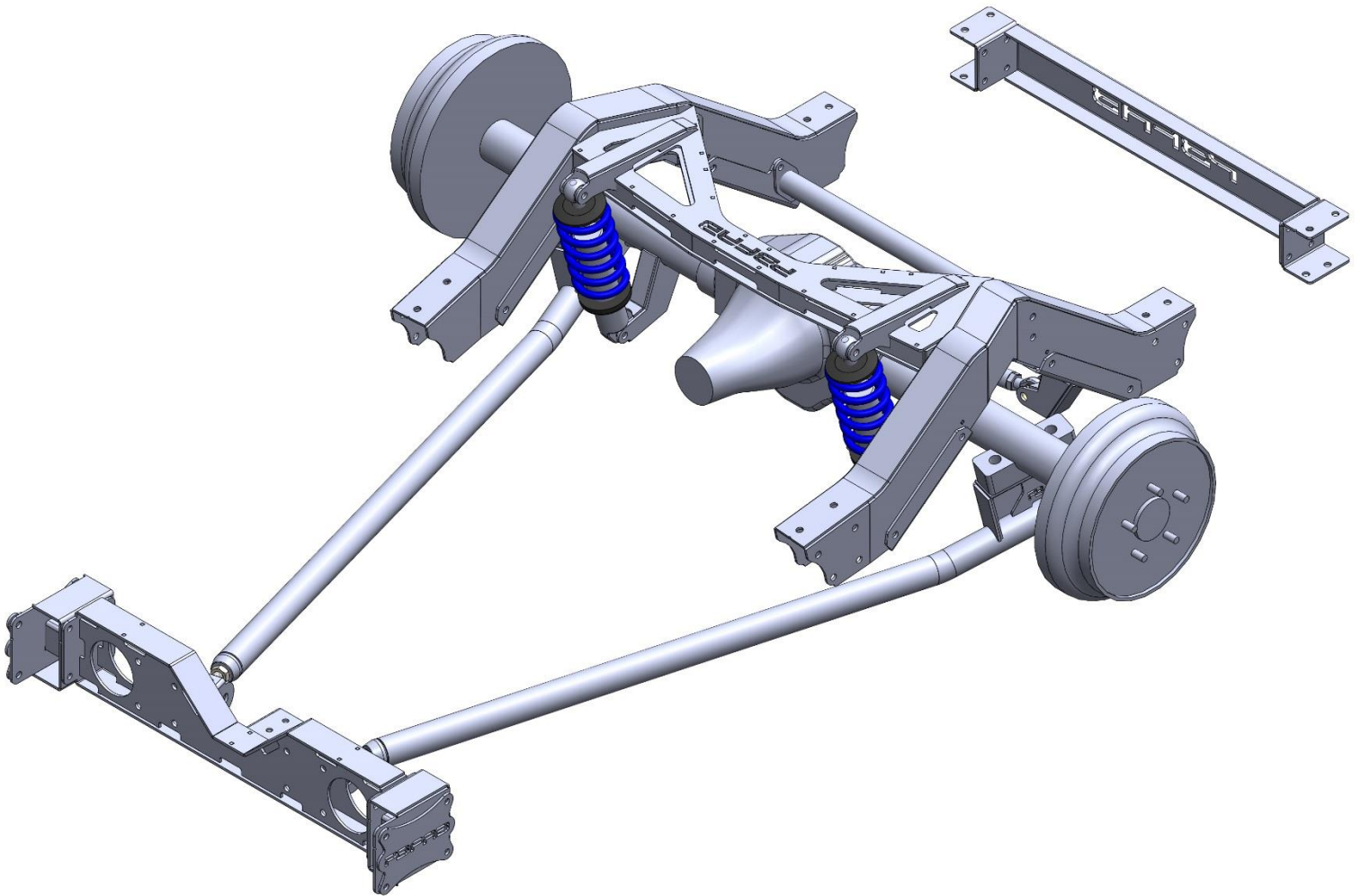


PORTERBUILT FABRICATION

DROPMEMBER REAR 63-72 LEVEL 2 COIL-OVER INSTALLATION GUIDE



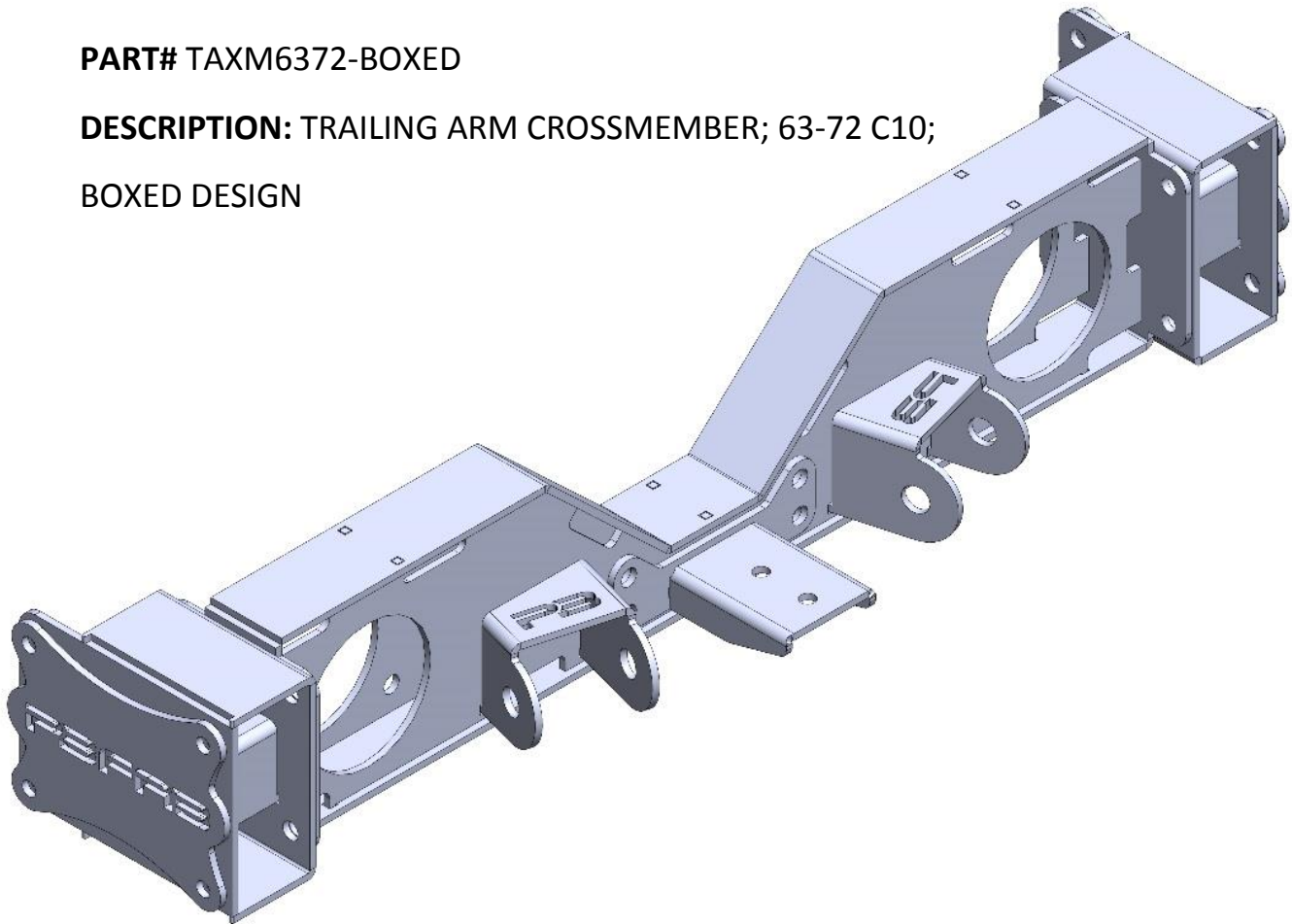
12/2/2019

SECTION 1: INDIVIDUAL COMPONENTS WITH HARDWARE DESCRIPTIONS.

***** HARDWARE BAGS WILL HAVE LABEL WITH PART NUMBER THAT CORRELATE TO EACH PART*****

PART# TAXM6372-BOXED

DESCRIPTION: TRAILING ARM CROSSMEMBER; 63-72 C10;
BOXED DESIGN



HARDWARE DESCRIPTION:

7/16 X 1.25 GRADE 8 BOLT USS (QTY. 20)

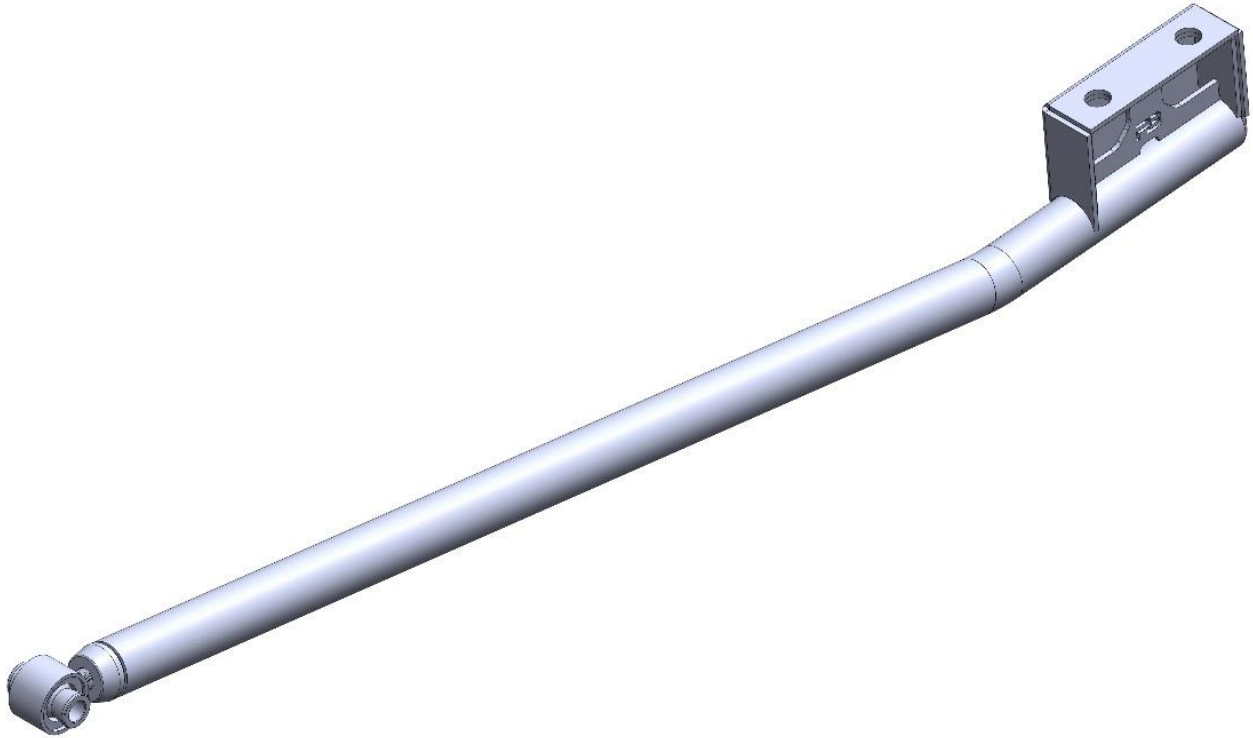
3/8 GRADE 8 FLAT WASHER USS (QTY. 40)

7/16 GRADE 8 NYLOC NUT USS (QTY. 20)

7/16 GRADE 8 LOCKWASHER (QTY. 4)

PART# TA-3-PHB

DESCRIPTION: TRAILING ARM; 3 INCH DROP; PANHARD BAR SPECIFIC



HARDWARE DESCRIPTION:

3/4 X 4.5 GRADE 8 BOLT SAE (FINE THREAD) (QTY. 2)

3/4 GRADE 8 FLAT WASHER (QTY. 4)

3/4 GRADE 8 NYLOC NUT SAE (FINE THREAD) (QTY. 6)

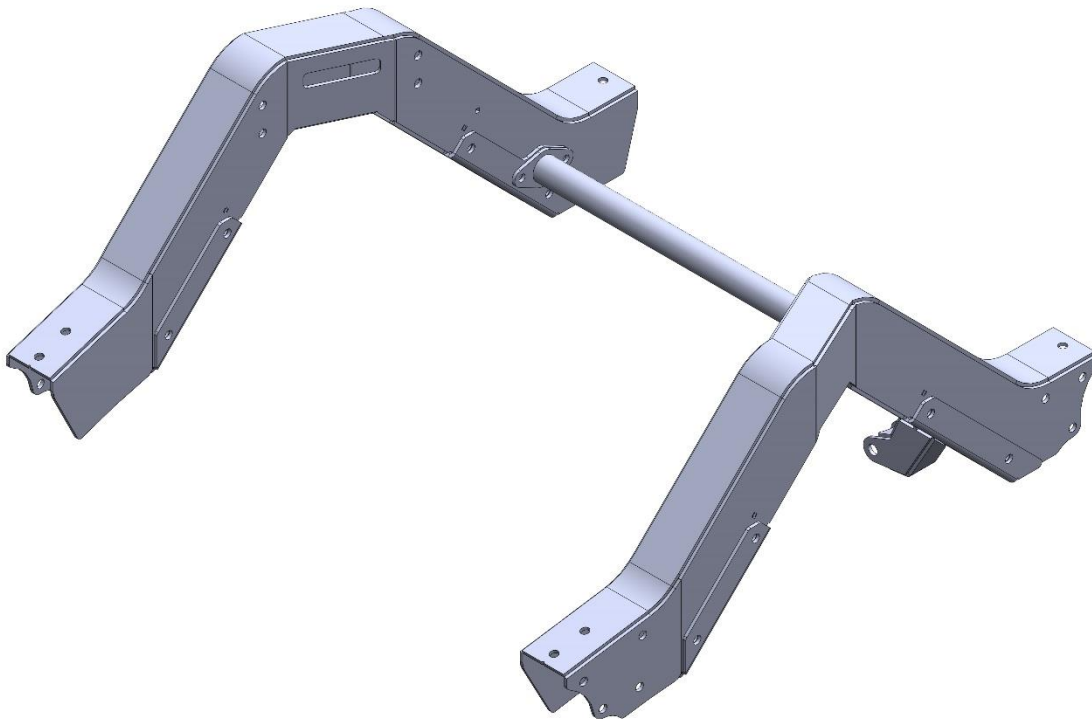
3/4 DEL SPHERE JOINT (QTY. 2)

3/4 ALUMINUM CONE SPACER (QTY. 4)

3/4 U-BOLT WITH NUTS AND WASHERS (PAIR)

PART# RN6372-2-B-PHB

DESCRIPTION: REAR NOTCH; 63-72 C10; LEVEL 3; BOLT IN; PANHARD BAR SPECIFIC



HARDWARE DESCRIPTION:

7/16 X 1.25 GRADE 8 BOLT USS (QTY. 50)

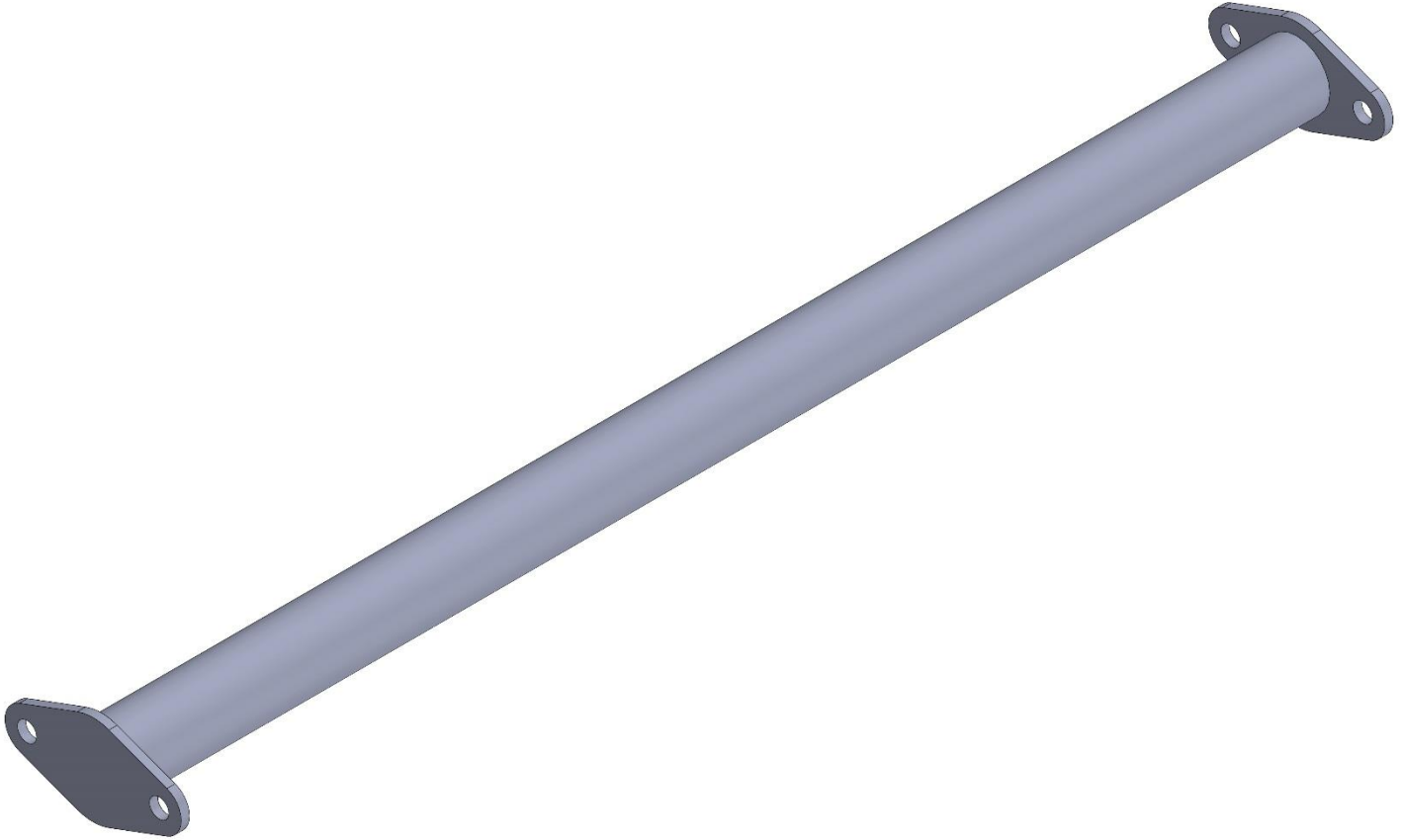
7/16 GRADE 8 NYLOC NUT USS (QTY. 40)

7/16 GRADE 8 LOCKWASHER USS (QTY. 10)

3/8 GRADE 8 FLAT WASHER USS (QTY. 80)

PART# RNXM275

DESCRIPTION: REAR NOTCH CROSS MEMBER 27 ½ INCHES OVERALL LENGTH

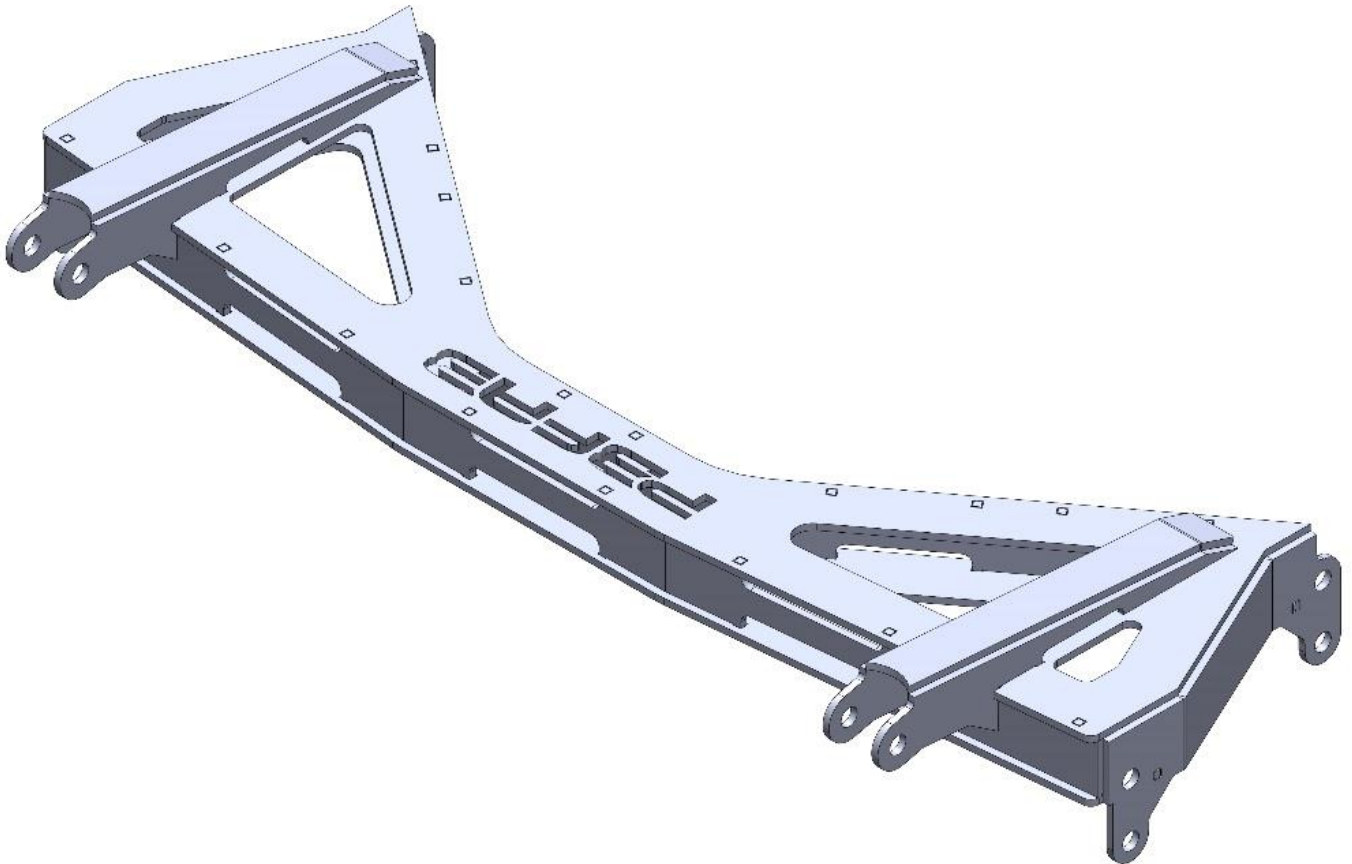


HARDWARE DESCRIPTION:

NO HARDWARE

PART# BA6372-IC

DESCRIPTION: BRIDGE ASSEMBLY; 63-72 C10 GM; INBOARD COIL-OVER



HARDWARE DESCRIPTION:

7/16 X 1.25 GRADE 8 BOLT USS (QTY. 8)

7/16 GRADE 8 LOCKWASHER (QTY. 8)

3/8 GRADE 8 FLAT WASHER (QTY. 8)

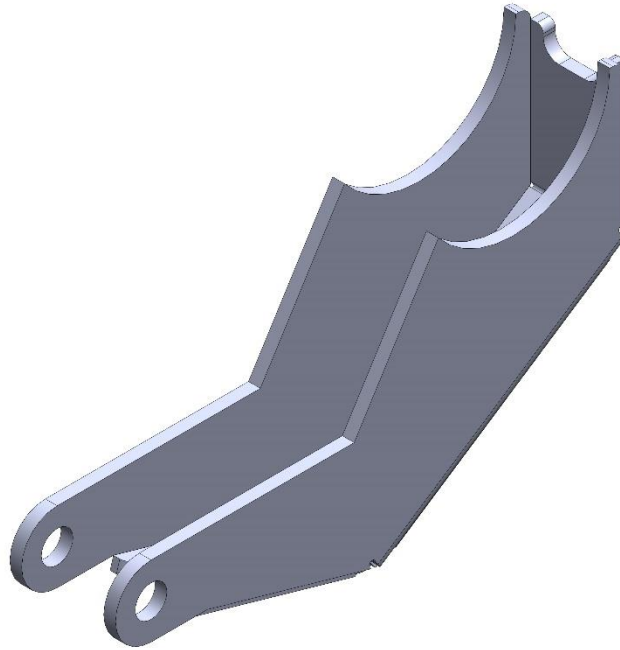
1/2 X 2.5 GRADE 8 BOLT USS (QTY. 4) *****COIL OVER MOUNTING BOLTS*****

1/2 GRADE 8 NYLOC NUT USS (QTY. 4)

7/16 GRADE 8 FLAT WASHER USS (QTY. 8)

PART# LCB-IC-2

DESCRIPTION: LOWER COIL OVER BRACKET; INBOARD COIL-OVER; LEVEL 2

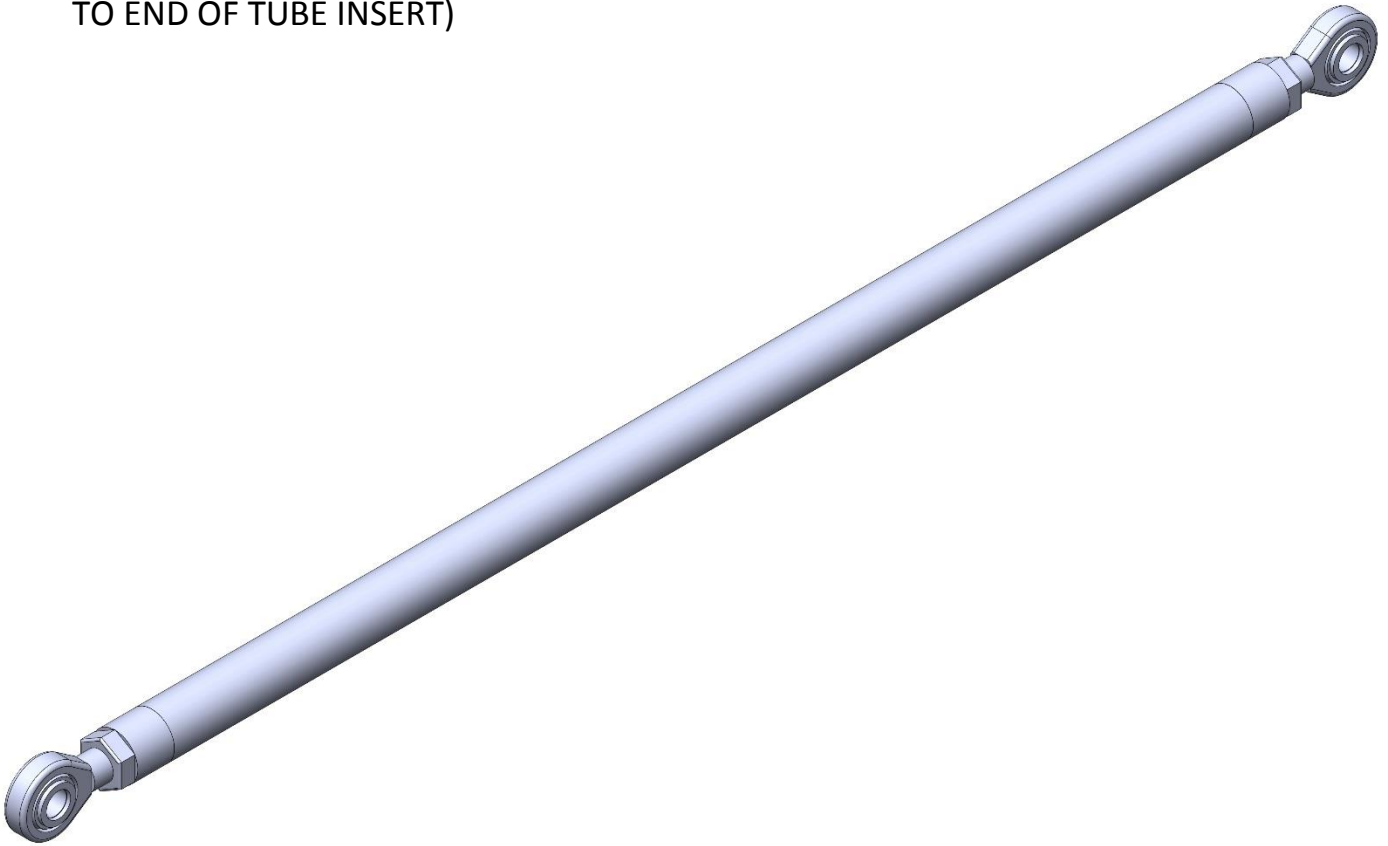


HARDWARE DESCRIPTION:

NO HARDWARE

PART# PHB280

DESCRIPTION: PANHARD BAR 28 INCHES OVERALL (FROM END OF TUBE INSERT TO END OF TUBE INSERT)



HARDWARE DESCRIPTION:

5/8 X 3.25 GRADE 8 BOLT USS (QTY. 2)

5/8 GRADE 8 NYLOC NUT USS (QTY. 2)

5/8 GRADE 8 FLAT WASHER SAE (QTY. 4)

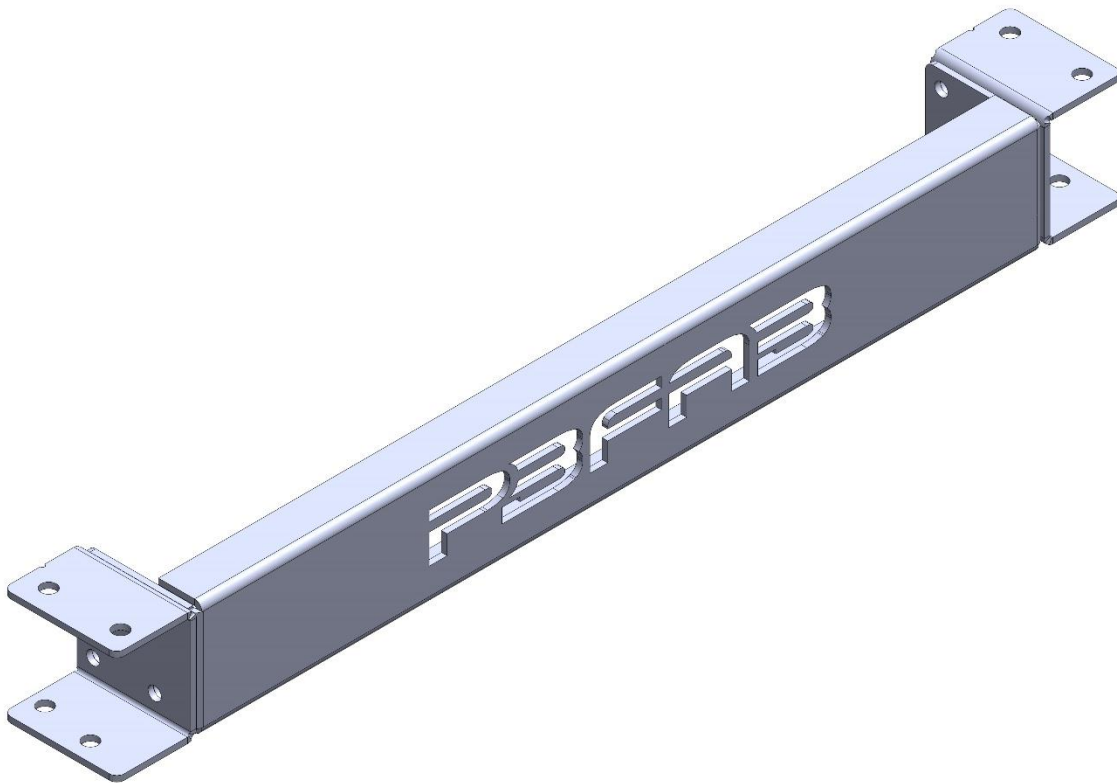
CS10 PHB CONE SPACER (GOLD ZINC) (QTY. 4)

3/4 X 5/8 LH ROD END WITH JAM NUT (QTY.1)

3/4 X 5/8 RH ROD END WITH JAM NUT (QTY. 1)

PART# RFXM6372-PBFAB

DESCRIPTION: REAR FRAME CROSSMEMBER 63-72 C10 PBFAB LOGO



HARDWARE DESCRIPTION:

7/16 X 1.25 GRADE 8 BOLT USS (QTY. 16)

7/16 GRADE 8 NYLOC NUT USS (QTY. 16)

3/8 GRADE 8 FLAT WASHER USS (QTY. 32)

*****THIS PART IS AN OPTION*****

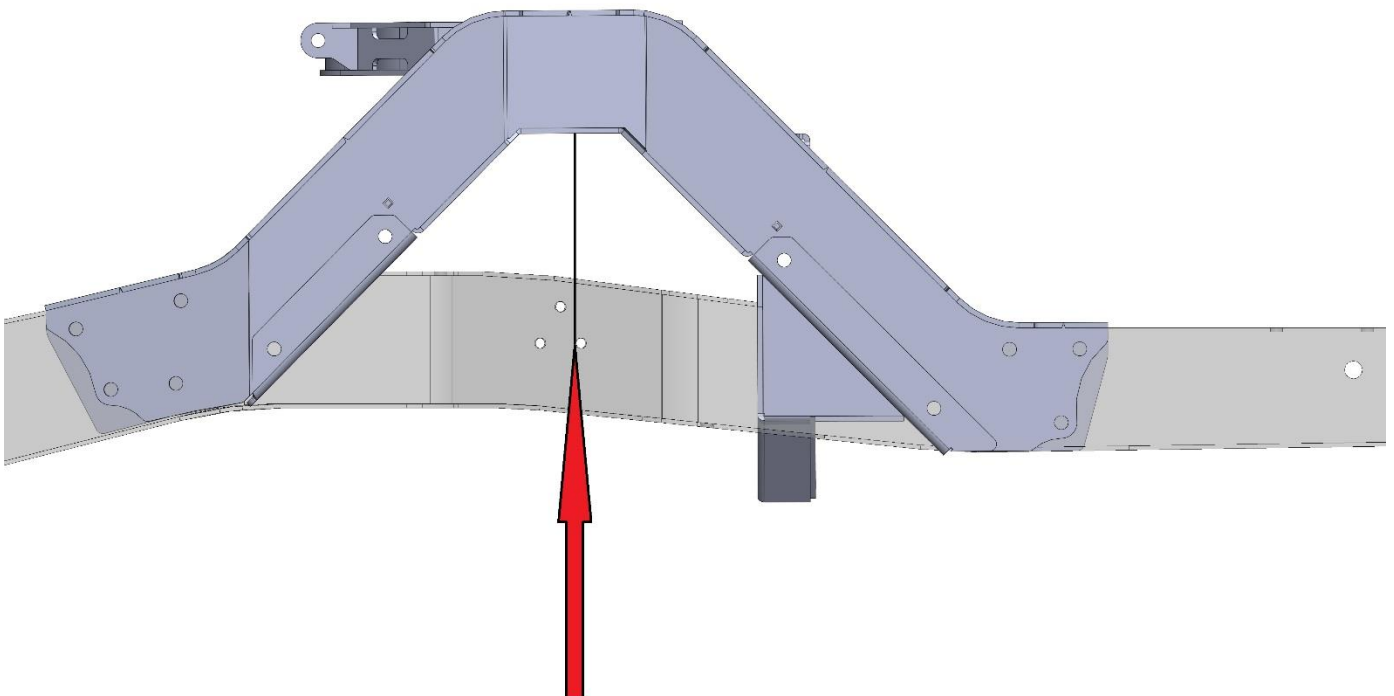
SECTION 2: PARTS INSTALLATION

REAR NOTCH INSTALLATION

- IT WILL BE NECESSARY TO TRIM FRAME RAILS SO THAT THE NOTCH WILL EASILY SLIDE OVER RAIL WITHOUT RESISTANCE
- USE MEASUREMENT BELOW FOR PROPER FORE-AFT LOCATION
- CLAMP NOTCH SO THAT THE NOTCH IS FLUSH AGAINST THE TOP OF FRAME RAIL AND OUTSIDE OF FRAME RAIL (*****FAILURE TO DO SO WILL CAUSE IMPROPER FITMENT OF REMAINING COMPONENTS*****)
- WITH NOTCH PROPERLY CLAMPED IN PLACE, USE NOTCH AS TEMPLATE TO DRILL MOUNTING HOLES IN FRAME (*****USE A 7/16 DRILL BIT*****)
- INSTALL 7/16 GRADE 8 HARDWARE TO SECURE NOTCH TO FACTORY FRAME (TORQUE TO 65 FT.-LBS)
- WITH NOTCH SECURELY BOLTED INTO FRAME, USE A SAWZALL OR CUT-OFF WHEEL TO REMOVE FACTORY FRAME SECTION (*****TAKE CARE TO NOT CUT INTO OR DAMAGE NOTCH*****)

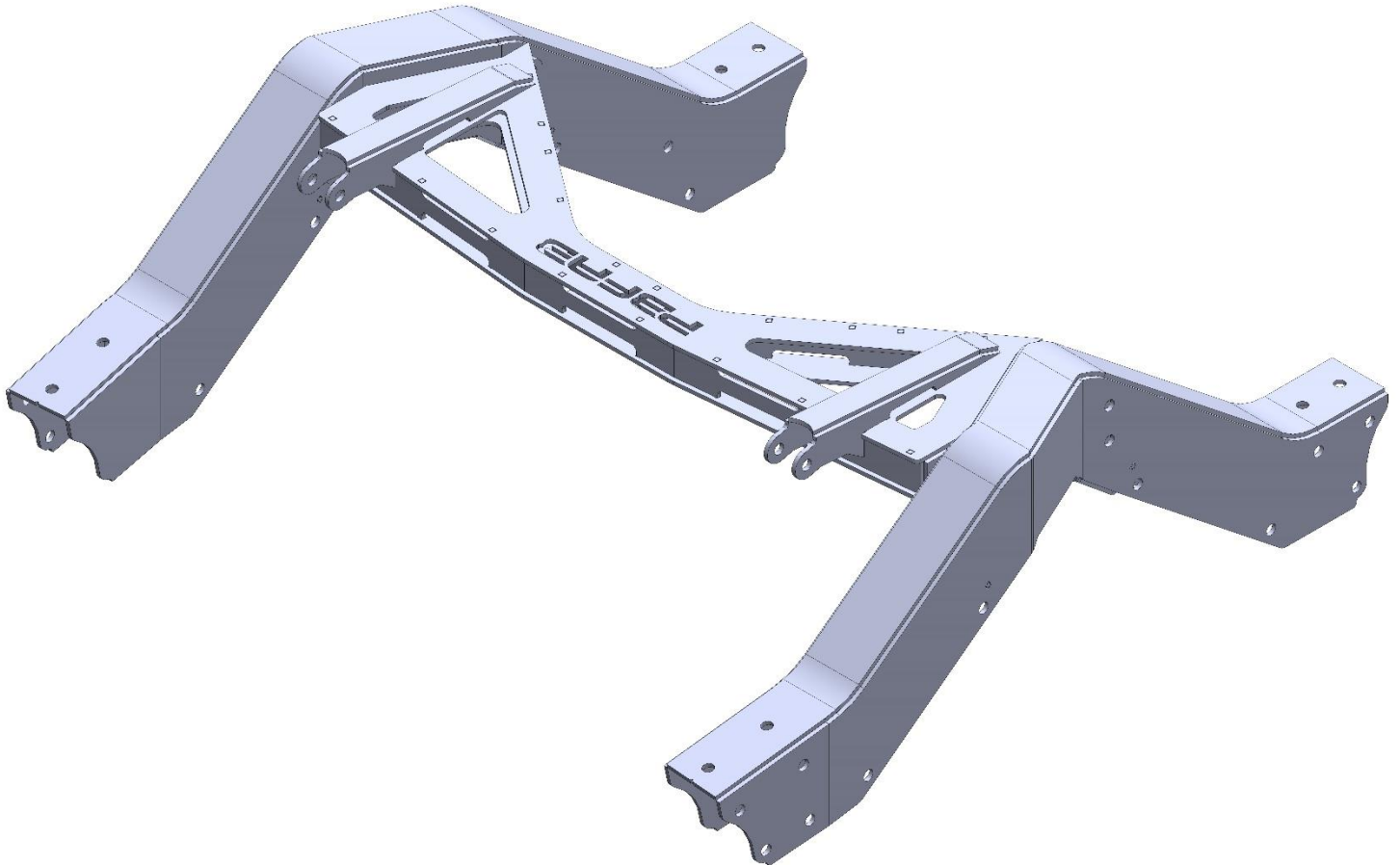
REAR NOTCH CENTER-LINE WILL COINCIDE WITH FRONT EDGE OF REAR-MOST BUMPSTOP MOUNTING BRACKET'S RIVET HOLE

*****USE BUMPSTOP HOLE IN BOTTOM OF NOTCH TO REFERENCE NOTCH CENTERLINE*****



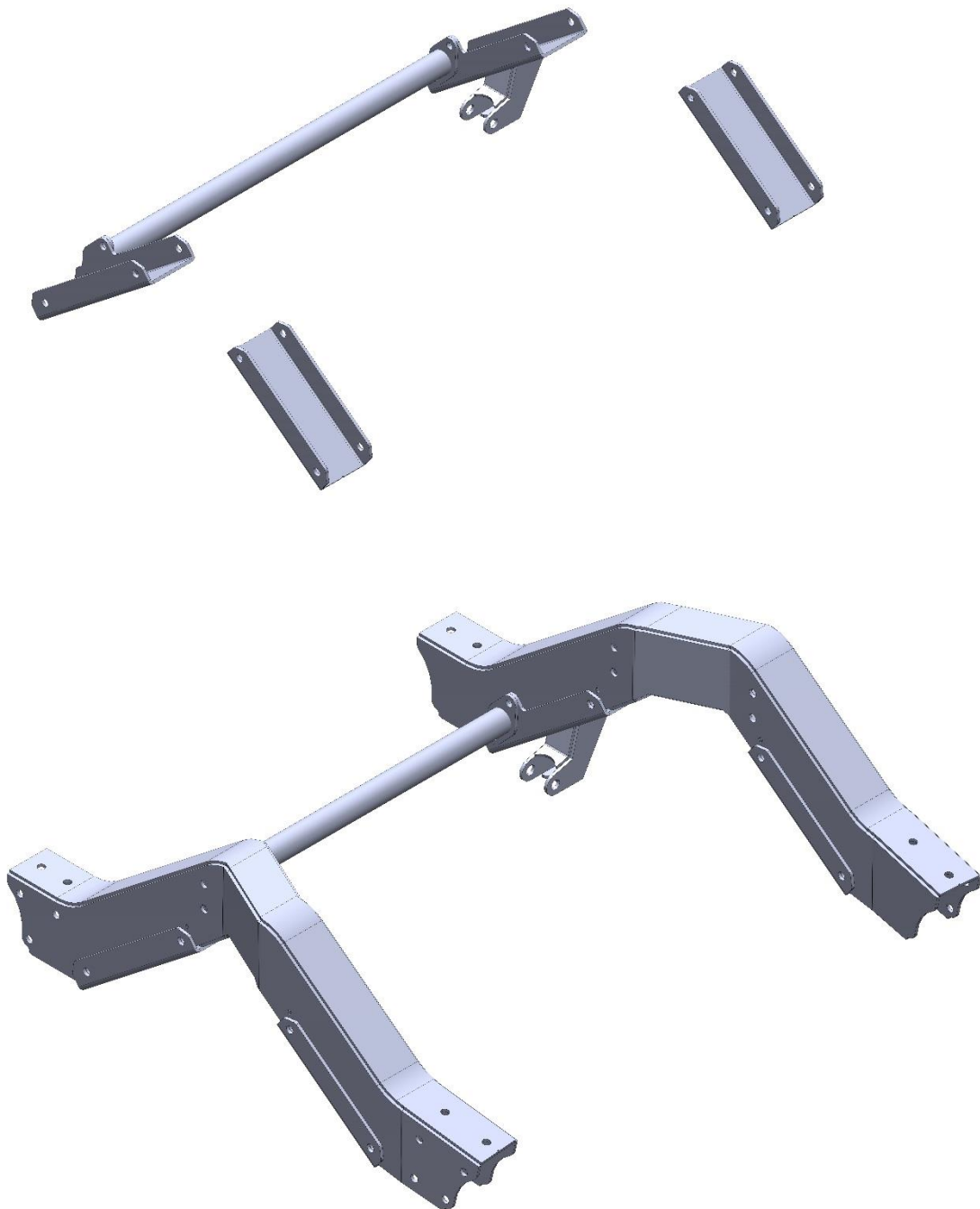
BRIDGE ASSEMBLY INSTALLATION

- INSTALL BRIDGE ASSEMBLY USING SUPPLIED GRADE 8 HARDWARE
- DO NOT YET FULLY TIGHTEN BRIDGE ASSEMBLY MOUNTING HARDWARE (*****WILL DO SO AFTER NOTCH CAP AND REAR NOTCH CROSSMEMBER INSTALLATION*****)



NOTCH CAP AND REAR NOTCH CROSSMEMBER INSTALLATION

- INSTALL FRONT AND REAR NOTCH CAPS AND REAR NOTCH CROSSMEMBER USING SUPPLIED GRADE 8 HARDWARE
- AFTER INSTALLING NOTCH CAPS AND REAR NOTCH CROSSMEBER TORQUE ALL HARWDARE TO 65 FT-LBS

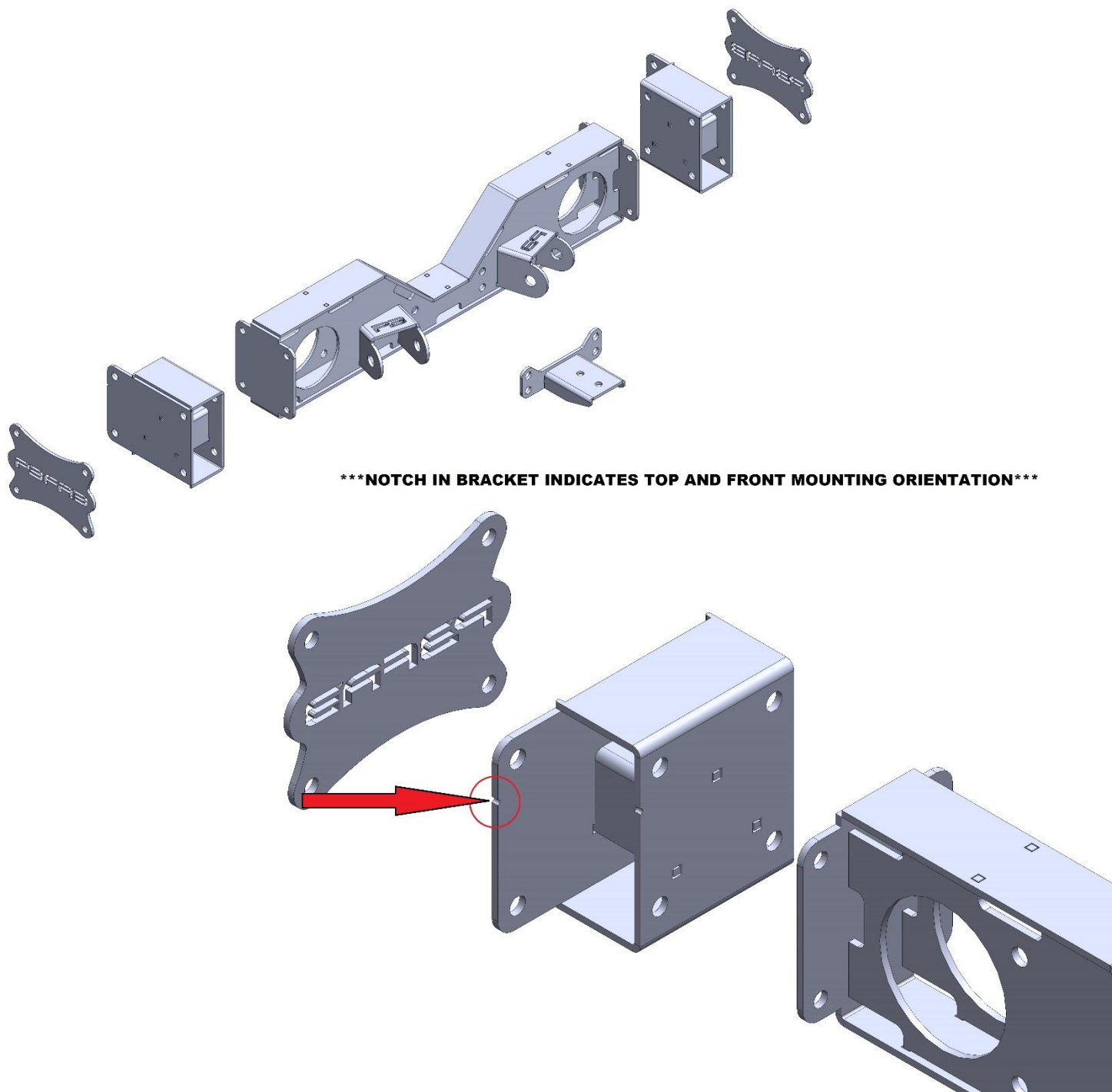


TRAILING ARM CROSSMEMBER/TRAILING ARM INSTALLATION

-BEFORE INSTALLING TRAILING ARM X-MEMBER PLEASE REVIEW IMAGES ON THIS PAGE AND FOLLOWING PAGE

-NOTCH IN C-CHANNEL MOUNTING BRACKET INDICATES TOP AND FRONT

-USE DIAGRAM ON FOLLOWING PAGE TO LOCATE TRAILING ARM X-MEMBER IN FRAME

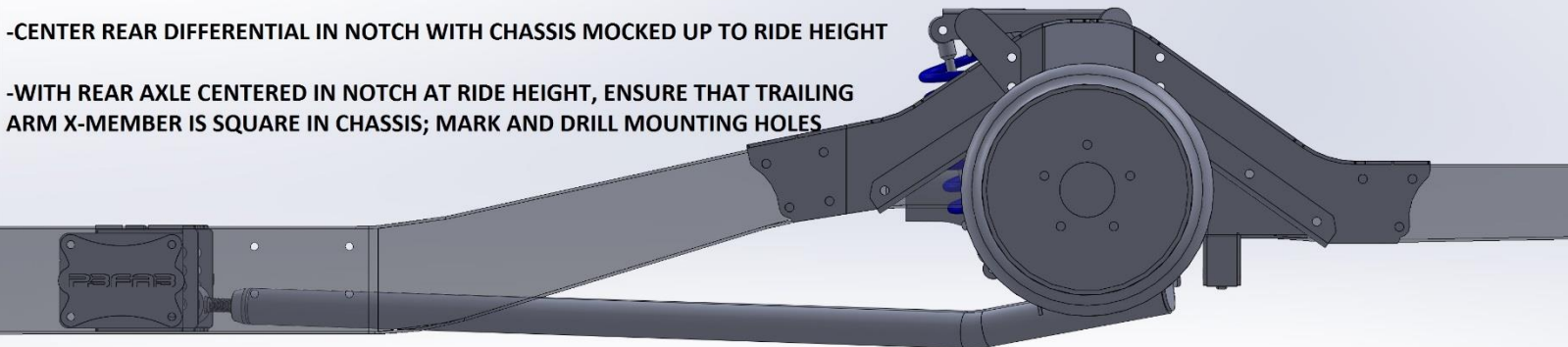


TRAILING ARM CROSSMEMBER INSTALLATION GUIDE (COIL OVER SUSPENSION SPECIFIC)

***NOTE* REAR NOTCH MUST BE FULLY INSTALLED TO PROPERLY SET TRAILING ARM X-MEMBER LOCATION**

COIL OVER SUSPENSION:

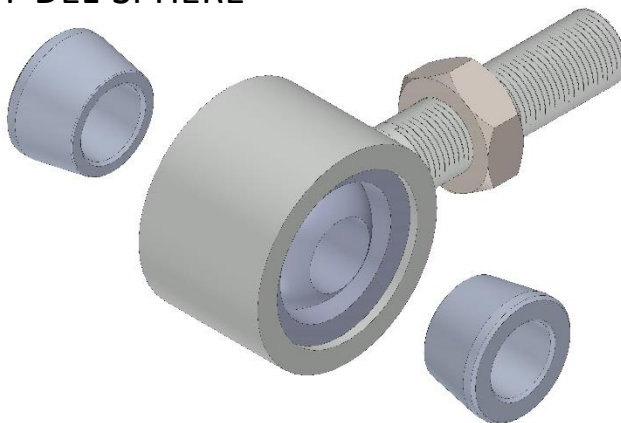
- MOCK UP TRAILING ARM CROSSMEMBER AND MOUNTING BRACKETS IN FRAME
- ATTACH TRAILING ARMS TO TRAILING ARM CROSSMEMBER (INSTALL DEL-SPHERE JOINTS SO THAT APPROX 1/2" OF THREAD IS SHOWING BETWEEN JAM NUT AND DELSPHERE HEAD; INSTALL DEL-SPHERE JOINT INTO LOWEST MOUNTING HOLE ON TRAILING ARM X-MEMBER)
- ATTACH TRAILING ARMS TO REAR DIFFERENTIAL
- CENTER REAR DIFFERENTIAL IN NOTCH WITH CHASSIS MOCKED UP TO RIDE HEIGHT
- WITH REAR AXLE CENTERED IN NOTCH AT RIDE HEIGHT, ENSURE THAT TRAILING ARM X-MEMBER IS SQUARE IN CHASSIS; MARK AND DRILL MOUNTING HOLES



EXPLANATION OF AXLE LOCATION

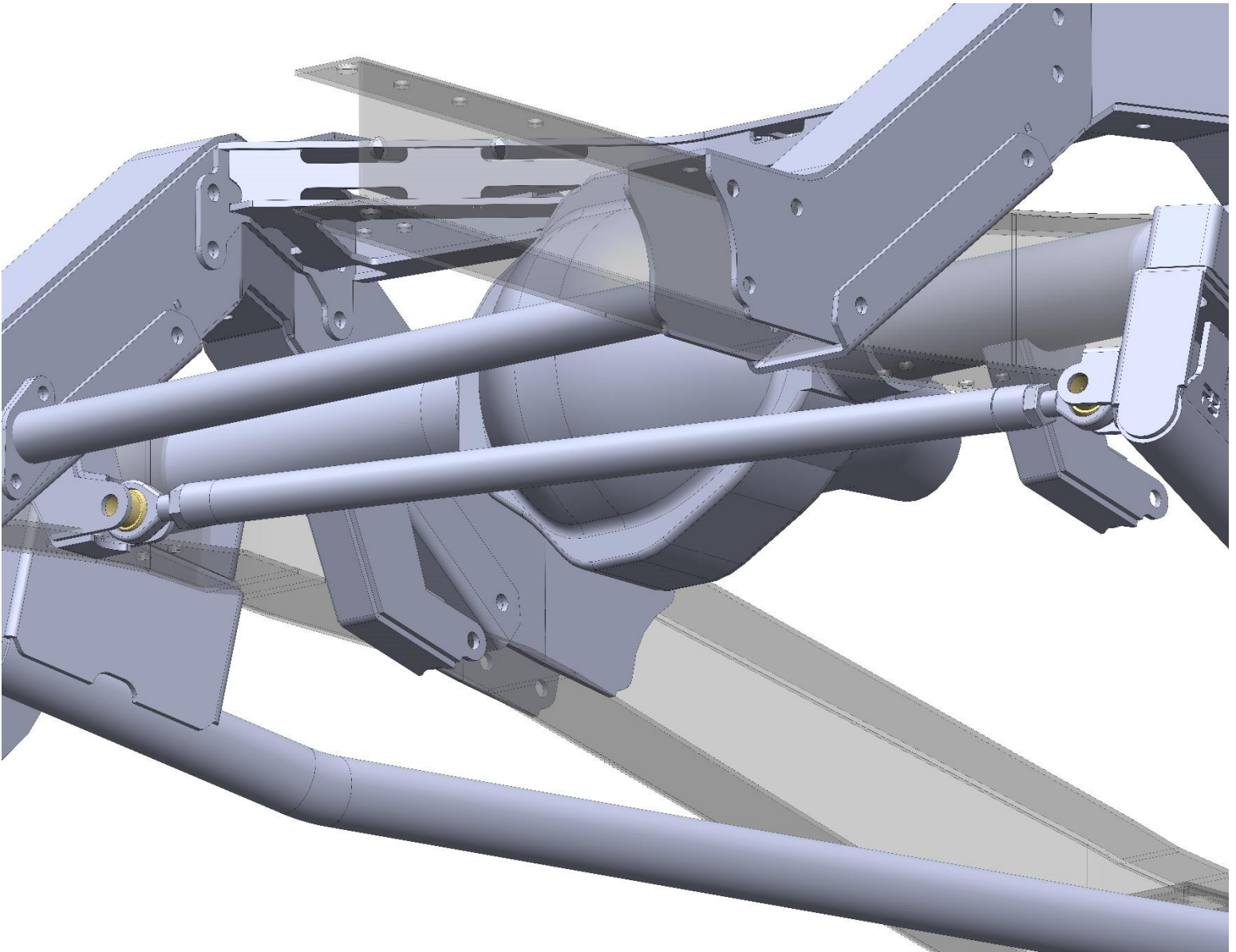
THE REAR SUSPENSION WAS DESIGNED SO THAT THE WHEEL AND TIRE ARE CENTERED IN THE WHEEL WELL OPENING AT RIDE HEIGHT.

-EXPLODED VIEW OF DEL-SPHERE
JOINT



PANHARD BAR INSTALLATION

- INSTALL PANHARD BAR ASSEMBLY USING SUPPLIED GRADE 8 HARDWARE
- TORQUE ALL HARDWARE TO 75 FT-LBS



COIL OVER INSTALLATION

- WHEN INSTALLING LOWER COIL OVER MOUNTING BRACKET, DISTANCE BETWEEN UPPER AND LOWER COIL OVER MOUNTING BOLTS NEEDS TO BE SET TO 13.5" CENTER TO CENTER *****WITH SUSPENSION AT SIMULATED RIDE HEIGHT*****
- USE SUPPLIED GRADE 8 HARDWARE SUPPLIED WITH BRIDGE ASSEMBLY
- TORQUE ALL HARDWARE TO 65 FT-LBS

