



1967-72 C10 HOOD HINGES, GAS ASSISTED

PART #: HH6772-GA-45

If your PB Fab product has a damaged or missing part, please contact customer service directly.

(480) 297-2621

Mon-Fri 8am – 4pm MST

Email: tech@pbfab.com

Website: PBFab.com

READ INSTRUCTIONS THOROUGHLY AND COMPLETELY BEFORE BEGINNING INSTALLATION.

INSTALLATION BY A CERTIFIED PROFESSIONAL MECHANIC IS HIGHLY RECOMMENDED.

PBFAB IS NOT RESPONSIBLE FOR ANY DAMAGE OR FAILURE RESULTING FROM IMPROPER INSTALLATION.

Safety Warning

MISUSE OF THIS PRODUCT COULD LEAD TO INJURY OR DEATH.

Suspension systems or components that enhance the performance of your vehicle may cause it to handle differently than it did from the factory. Extreme care must be used to prevent loss of control or vehicle rollover during abrupt maneuvers.

Installation Warning

All steps and procedures described in these instructions were performed while the vehicle was properly supported.

Use caution during all disassembly and assembly steps to ensure components are not over extended causing damage to any vehicle components and parts included in this kit.

Included instructions are guidelines only for recommended procedures and are not meant to be definitive.

Installer is responsible to ensure a safe and controllable vehicle after performing modifications.

Unless otherwise specified, tighten all bolts and fasteners to standard torque specifications listed within the OE Service Manual.

Install Time: Typically 2-4 Hours

Skills: Moderate. Requires a small amount of fabrication and some welding.

NOTE – TWO PEOPLE ARE NECESSARY FOR SOME STEPS.

Tools Needed:

- Tape measure
- Drill
- 5/16" & 1/8" drill bits
- Center punch
- Angle grinder with a cut of wheel or Dremel
- Angle grinder with a flap disc/sanding disc
- Painters tape
- Sharpie
- Posterboard or file folder
- Scissors
- Pen
- Small magnet
- RTV silicone
- Ratchet, 3/16" hex head bit & 1/2" socket
- 1/2" wrench

Let's start by laying out all the parts and identifying the components.

Our hood hinge kit includes:

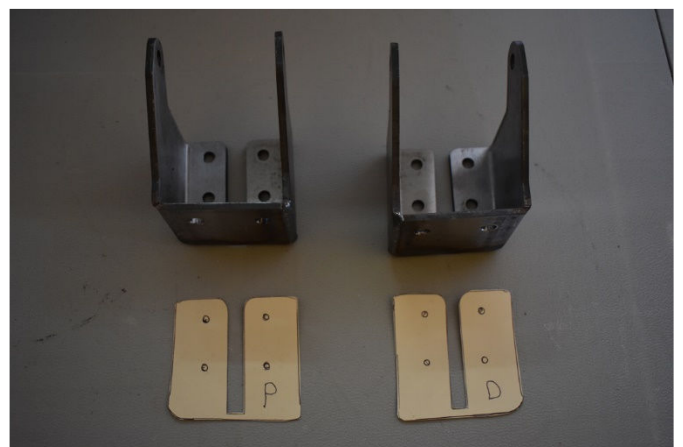
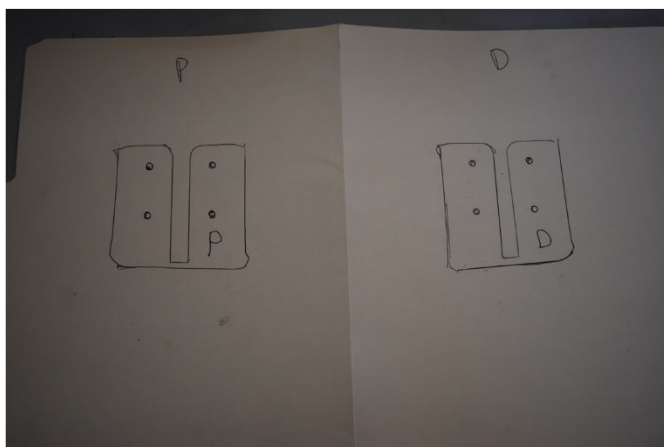
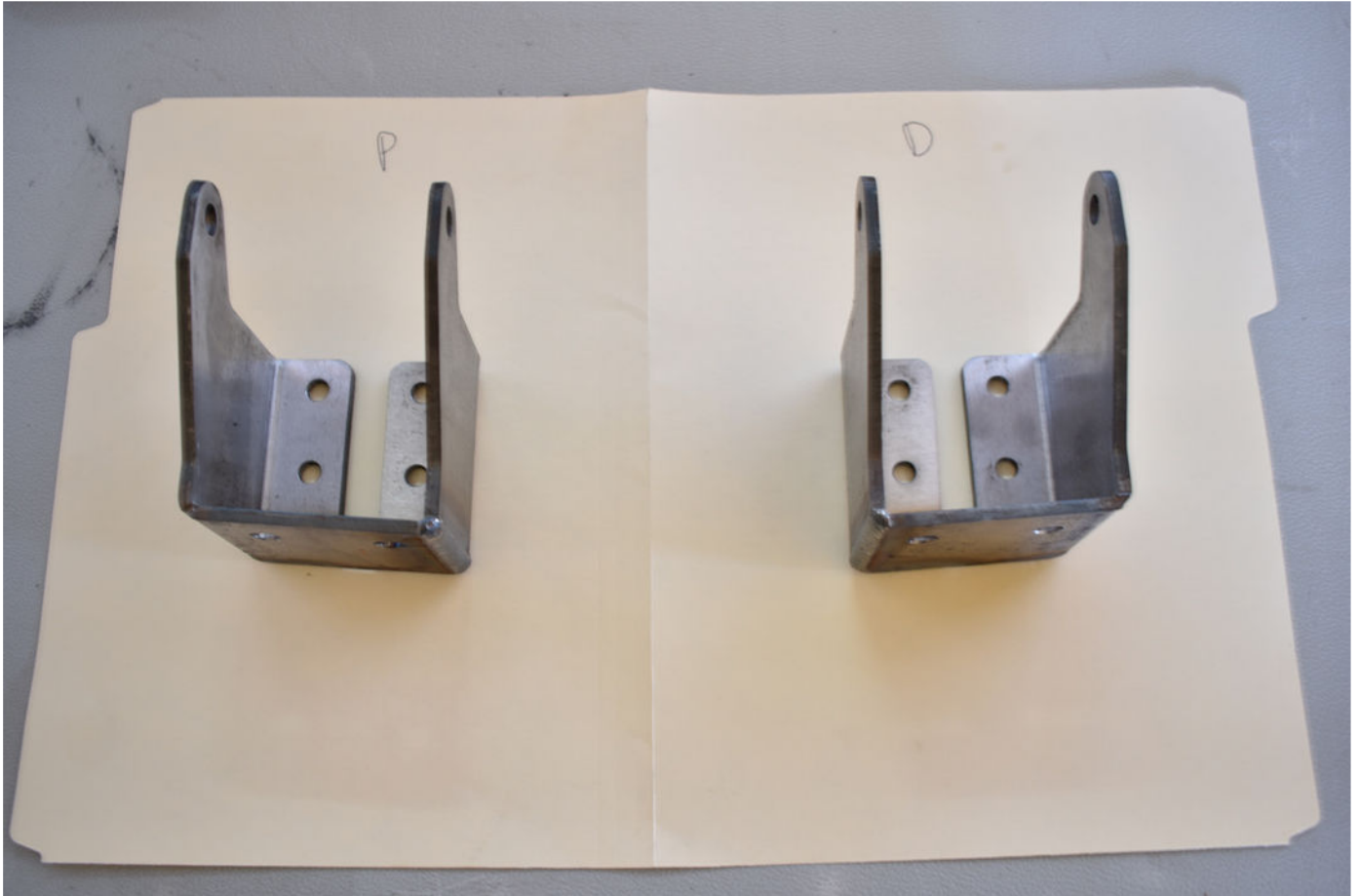
1. Hood Hinge Pockets
2. Hood Hinge Arms
3. Hood Plates
4. Pocket Shims
5. Firewall Strut Brackets
6. Gas Struts
7. Hardware



Before we get to the vehicle, let's make a template of the hood hinge pockets. These will go inside of the cowl, bolt to the firewall, and bottom of the cowl.

They are NOT identical. Be sure to identify driver side (D) and passenger side (P) as shown.

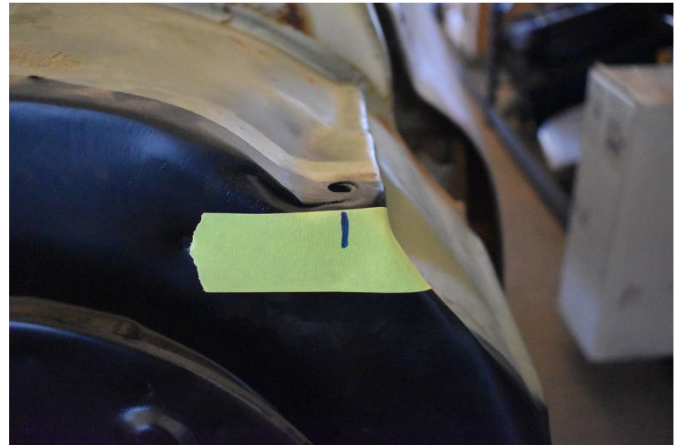
Place the hood hinge pockets face down on the posterboard or file folder and trace the outline and mark the holes. Cut out the template. Be sure to label the templates as well.



Next, remove the hood and factory hood hinges. We always recommend at least 2 people remove the hood to prevent any damage to the vehicle or injury.

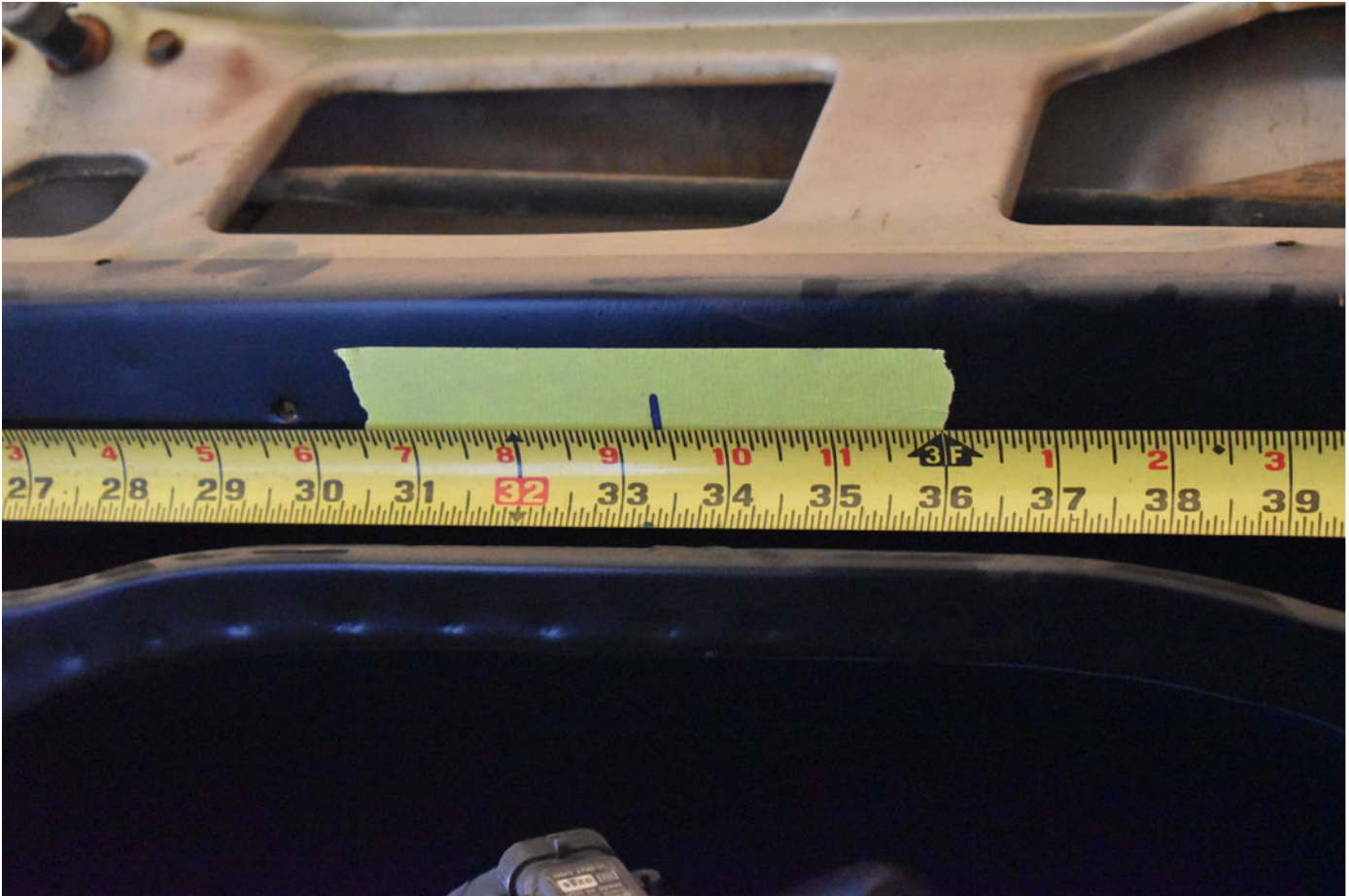
Once the hood has been removed, find the center point of the cowl area/firewall. Do this by measuring the distance between the two cowl bolt holes.

Place some tape on the firewall and draw a line straight down from the center of the bolt hole. Measure the distance between the two lines. It should be 64-3/4".



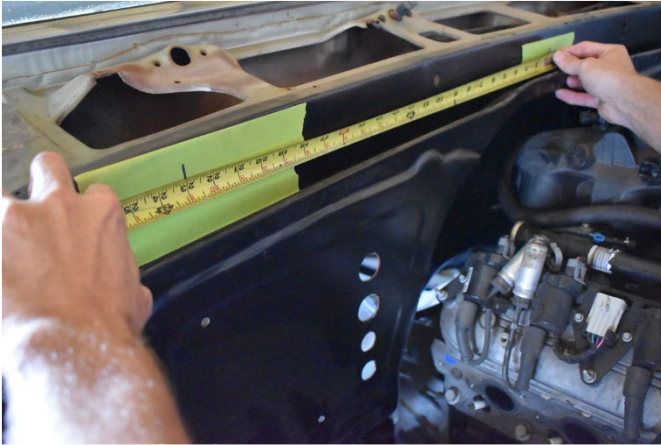
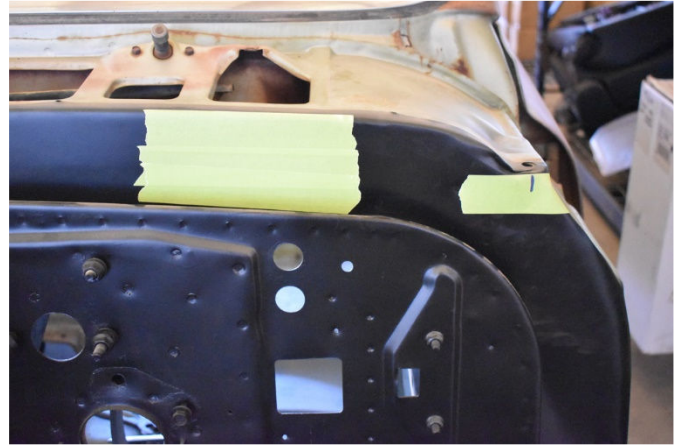
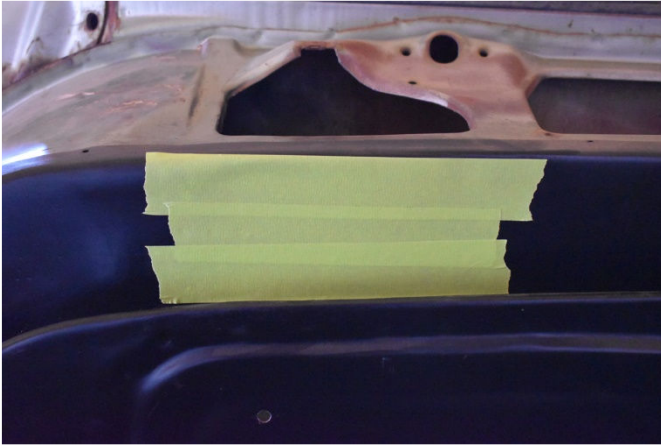
To find the center, measure 32-3/8" from the driver or passenger side. Double check the measurement by measuring from both sides.

** You'll notice the measurement shows 33-3/8" in our photo. I started the measurement from the 1" line and held the tape measure in place against the firewall with a piece of painters tape since I didn't have an assistant.



Once the center point is marked, measure 23" to the driver side and passenger side. Apply a few pieces of tape to the firewall before marking these points.

Double check your measurements.

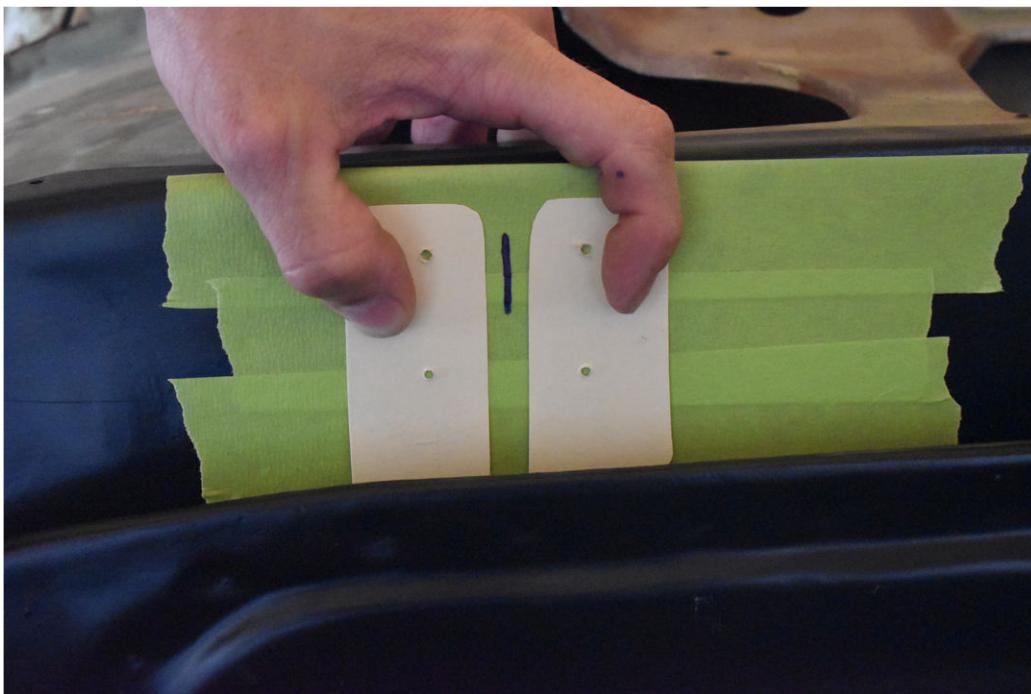


Verify the distance between the two marks is 46".

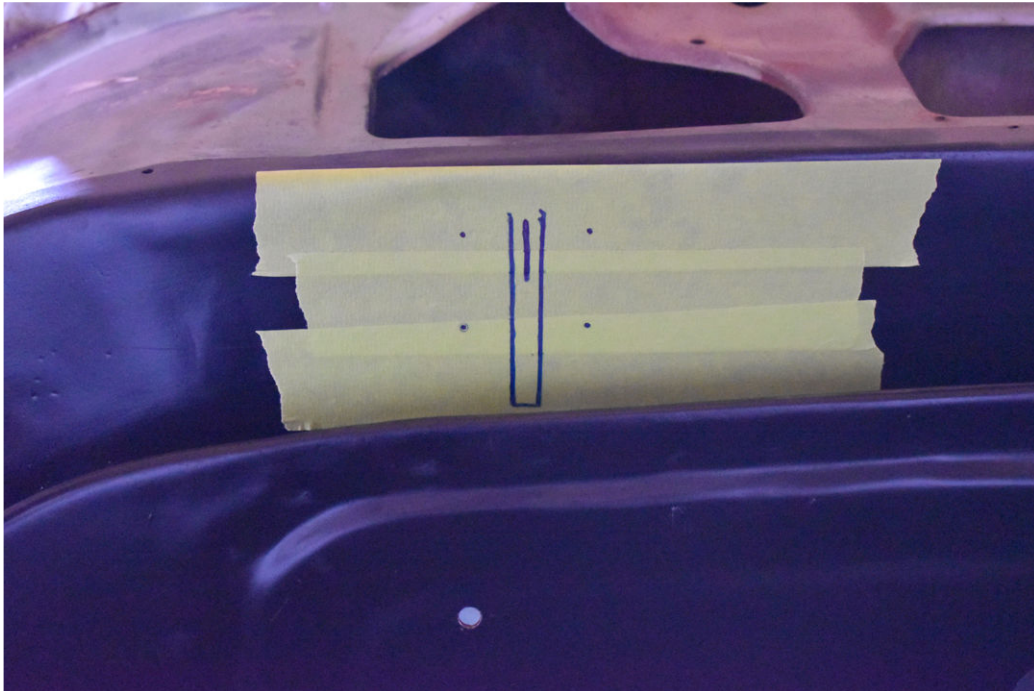
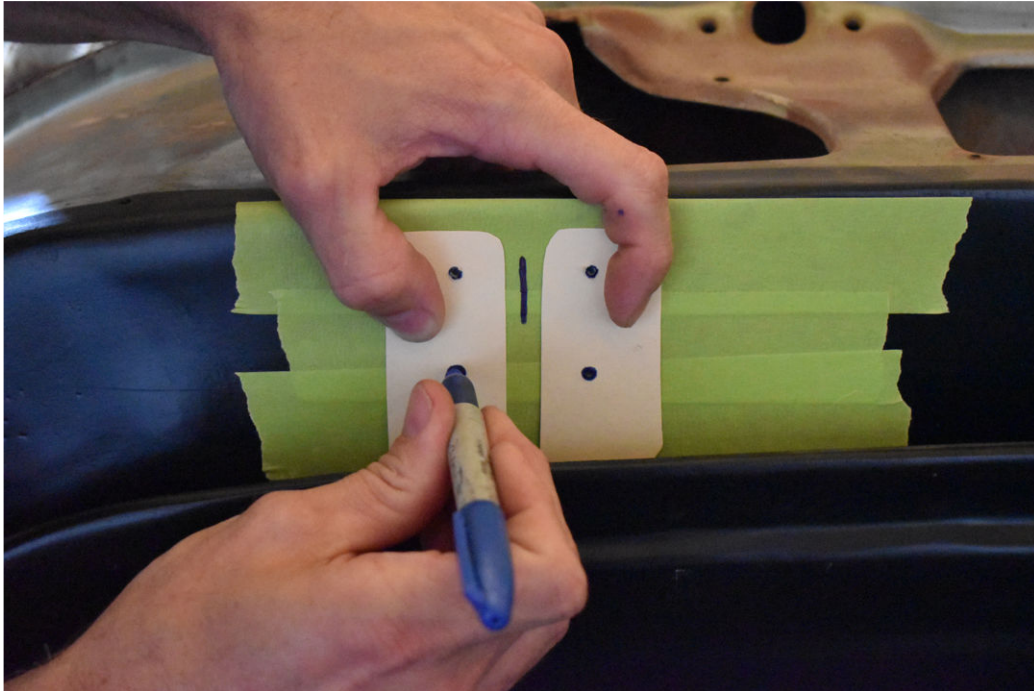


We're now ready to use the hood hinge pocket templates created earlier. Starting with the passenger side, flip the template over and align the center line with the measurement from the previous step.

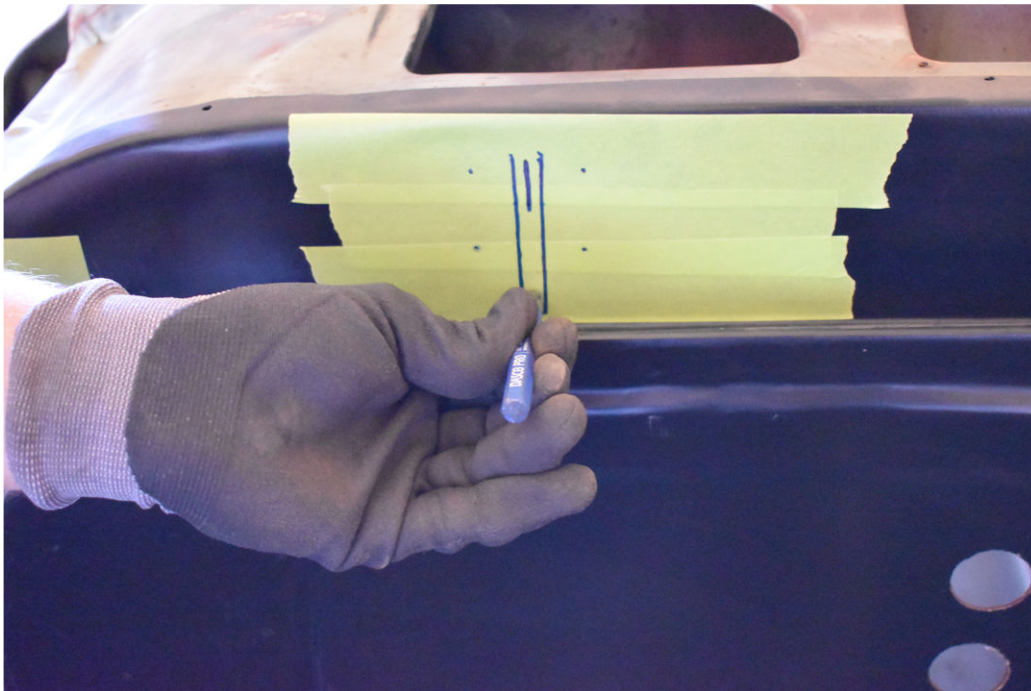
The bottom of the template will need to sit flush against the inside lip of the firewall.



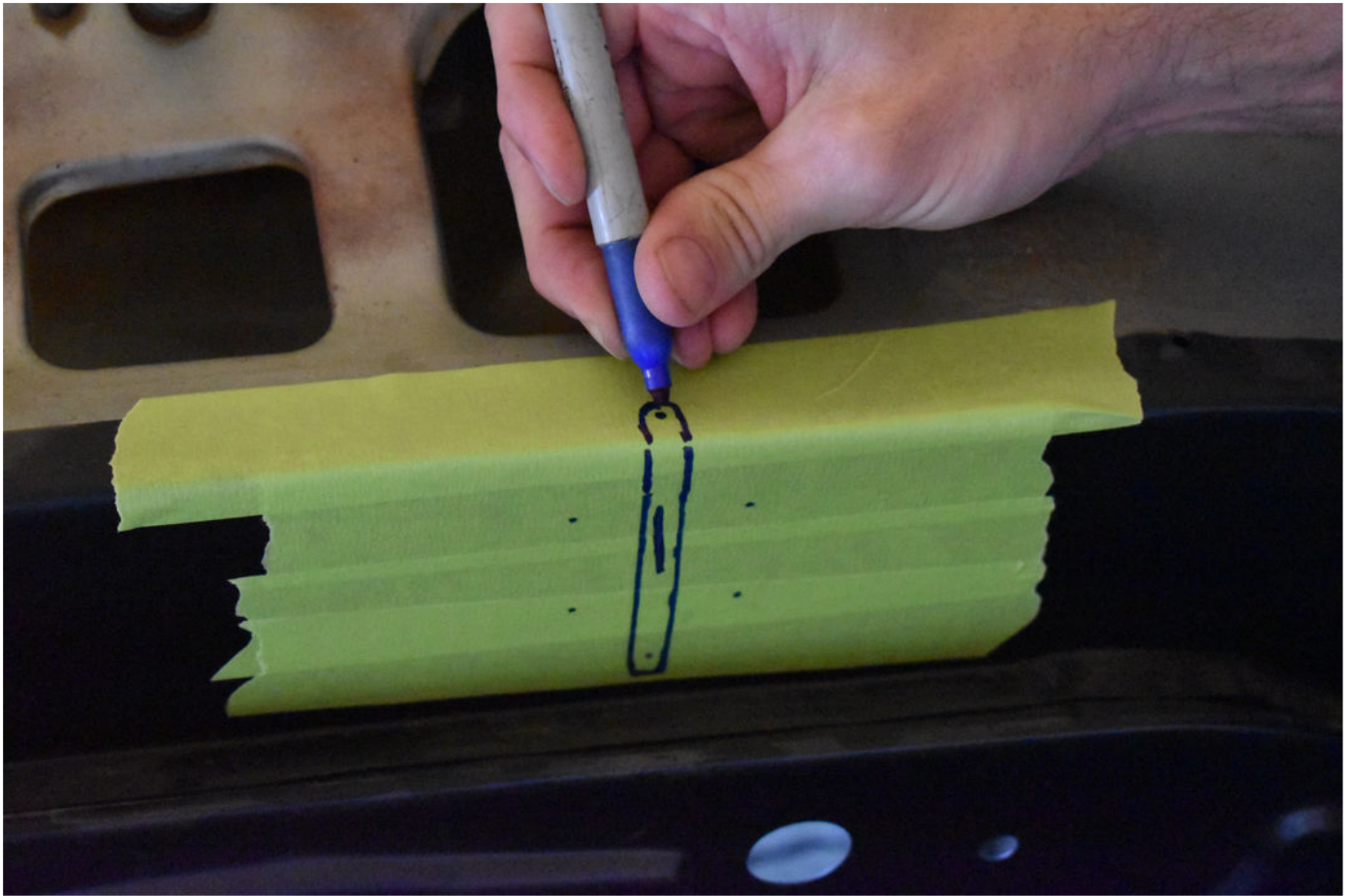
Mark the holes and trace the inside slot of the pocket.



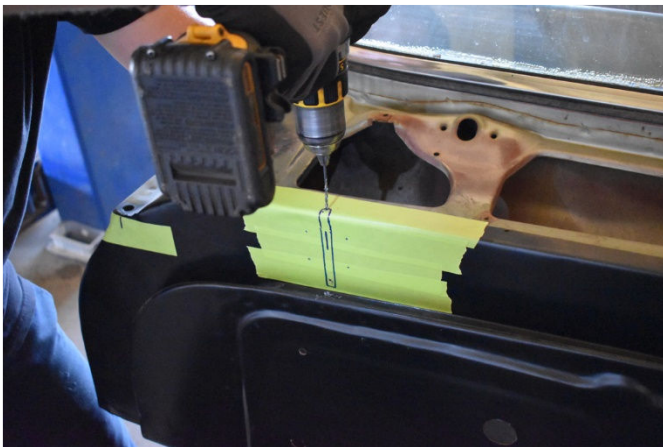
Using a punch, mark the holes on the firewall and bottom of the hood hinge slot.



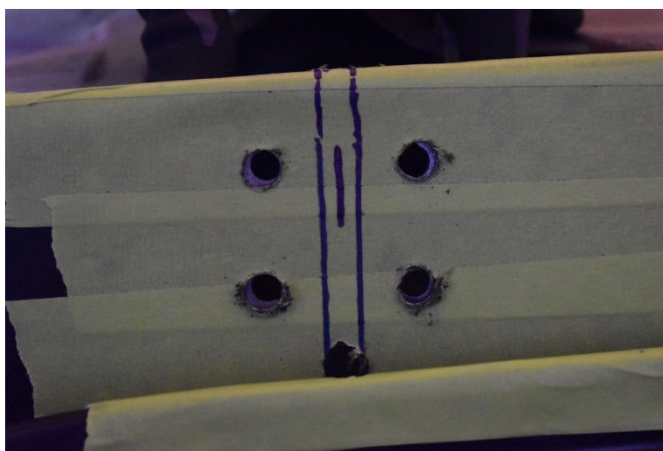
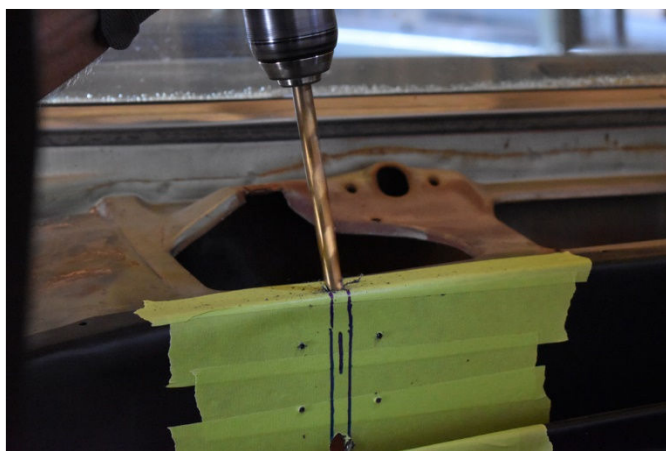
Before drilling, draw a small section on the top of the firewall and mark it with a punch.



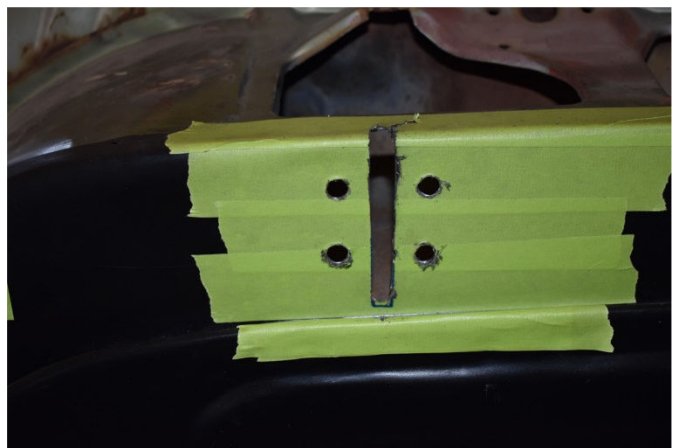
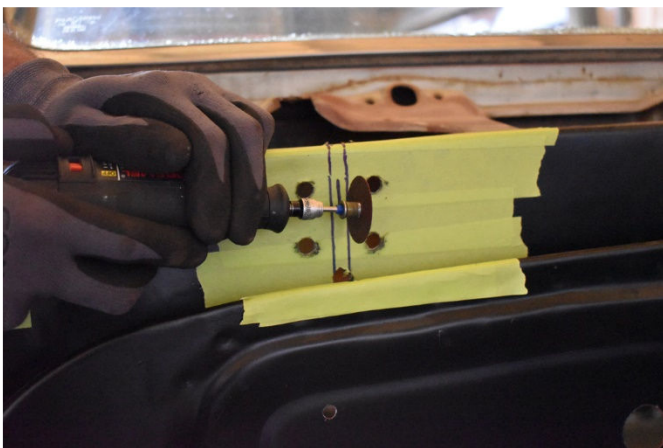
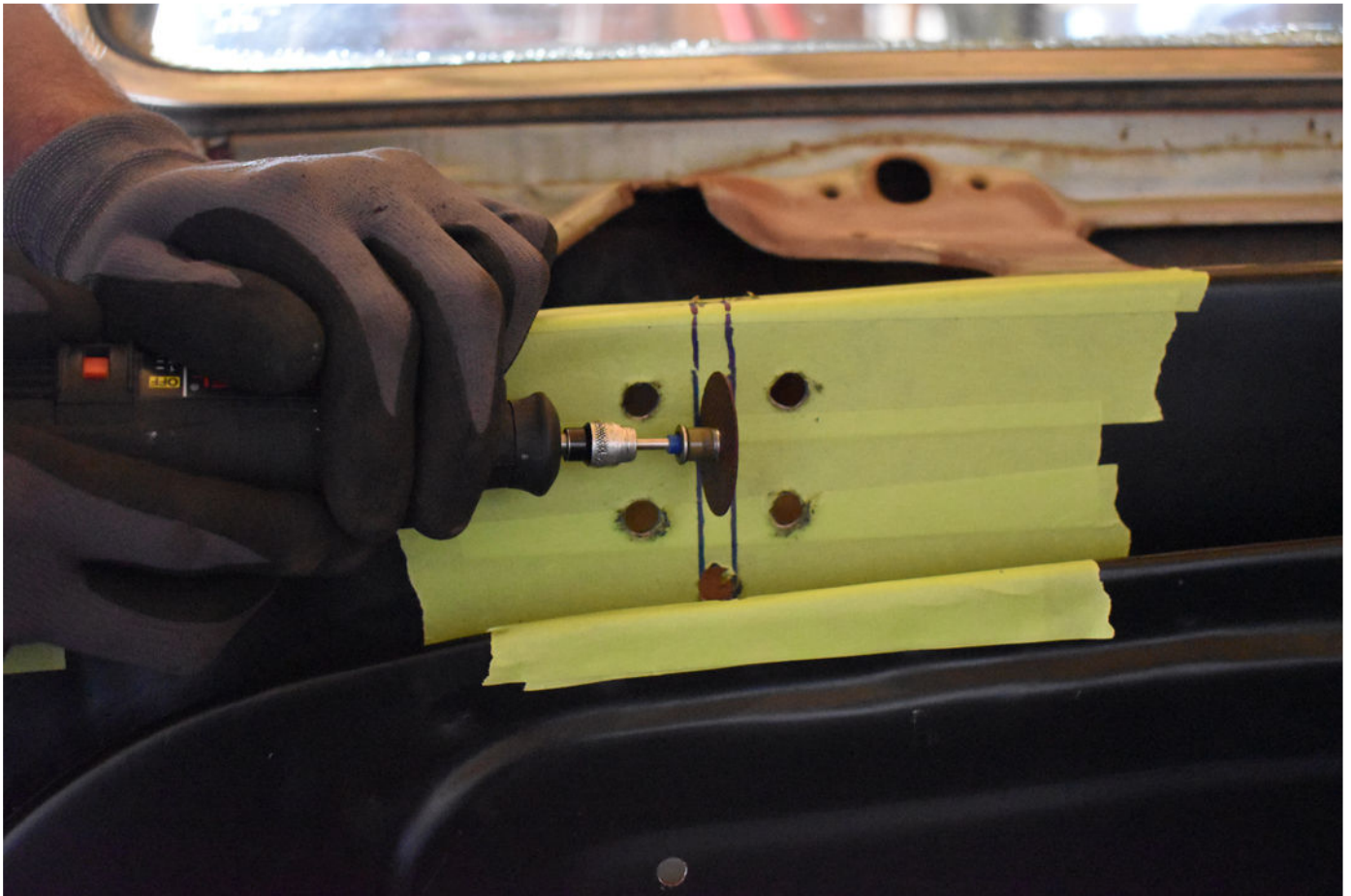
Use a small 1/8" bit and drill the pilot holes. This helps to prevent any drill bit wandering in the next step.



After drilling pilot holes, use the 5/16" bit and drill out the bottom and top of the hood hinge slot. Drill the 4 bolt holes as well.



Using a Dremel or angle grinder with a cut-off wheel, cut along the lines connecting the top and bottom holes. It's better to cut too little than too much here. You can always come back and grind or file the edges.



Mount the pocket and gas strut braces. Don't tighten the hardware yet. Note the orientation of the strut brackets.

IMPORTANT – THE BOTTOM OF THE HOOD HINGE POCKET MUST SIT COMPLETELY FLUSH TO THE BOTTOM OF THE COWL. FAILURE TO DO THIS WILL PREVENT THE HOOD FROM CLOSING PROPERLY.

NOTE – THERE ARE TWO SHIMS INCLUDED WITH THE KIT. USE THEM UNDER THE REAR EDGE OF THE HOOD HINGE POCKET, ONLY IF NECESSARY.

Tighten the hardware.



Drill out the holes in the bottom of the pocket.

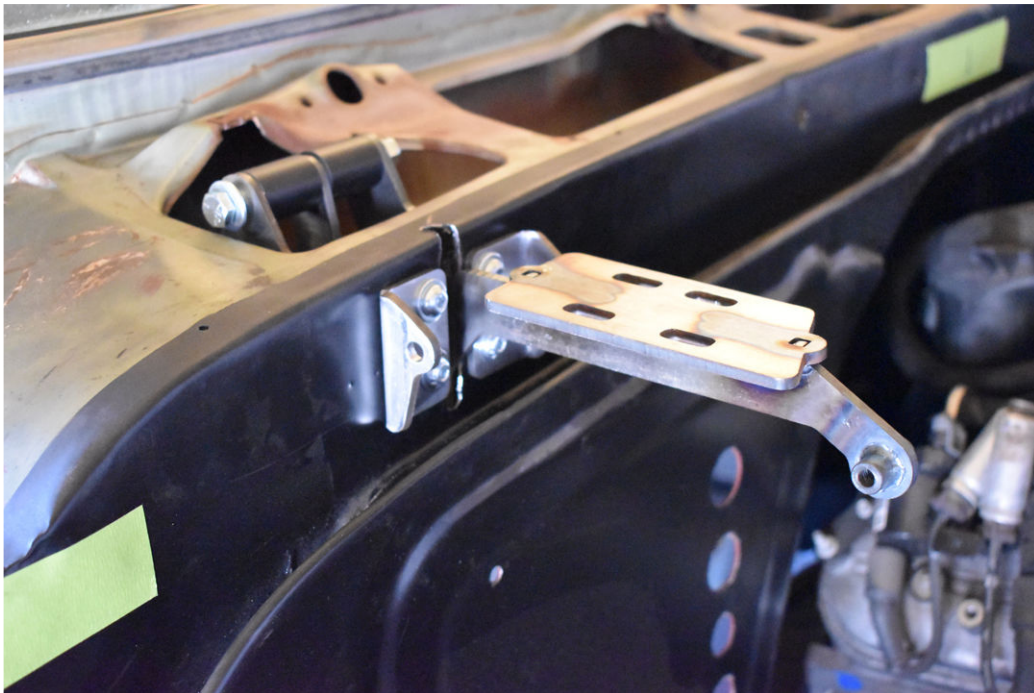
NOTE - BE SURE NOTHING INSIDE THE CAB IS IN THE WAY BEFORE DRILLING!



Install the hardware.

NOTE – TWO PEOPLE WILL BE NECESSARY FOR THIS STEP.

Once all the hardware is installed, slide the hood hinge in place and loosely install the hardware as shown.

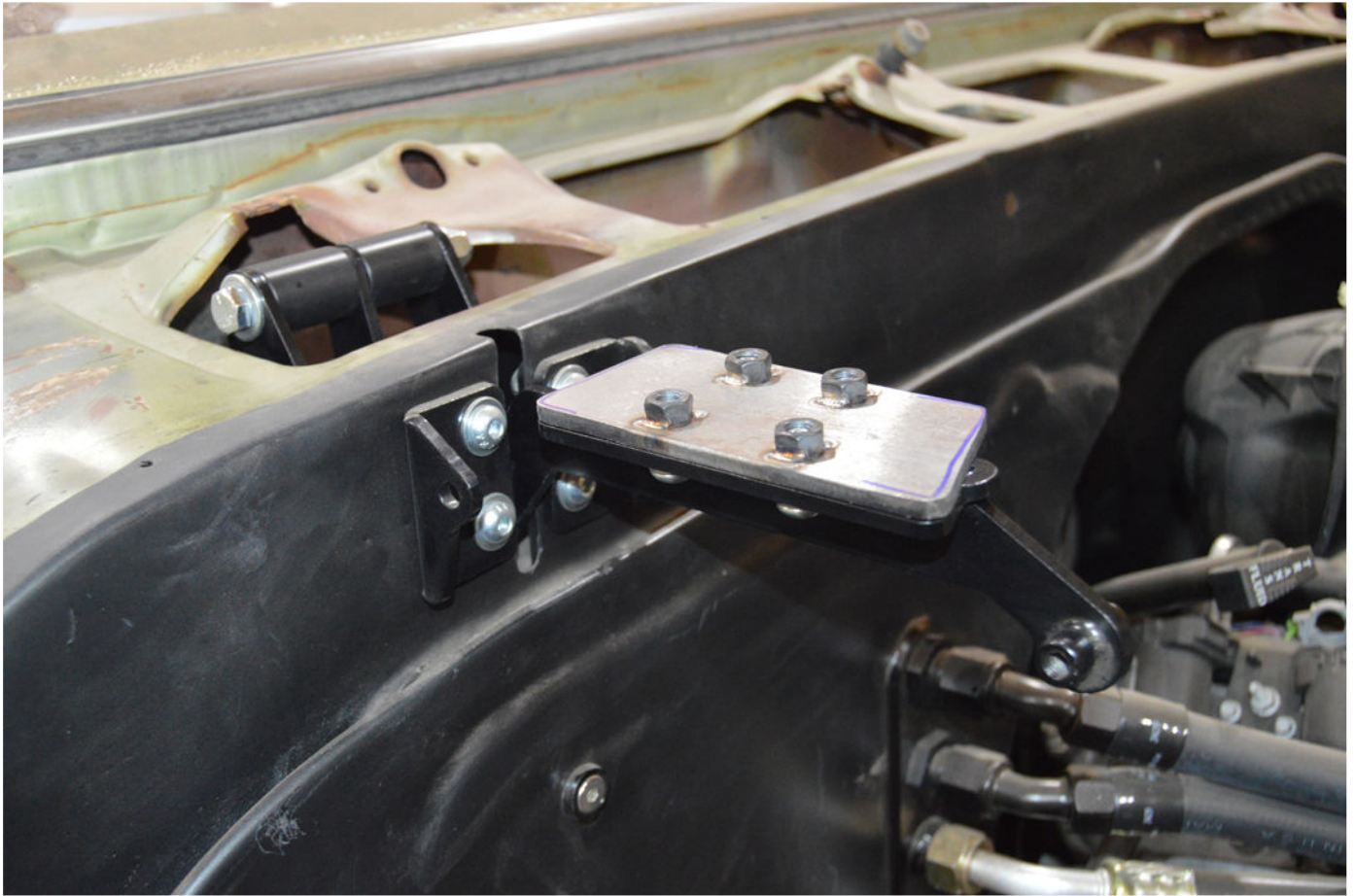


If you haven't already, repeat the process for the opposite side.

IMPORTANT – BEFORE FINAL INSTALLATION OF THE BOTTOM BOLTS IN THE HOOD HINGE POCKET, USE SOME RTV SILICONE TO SEAL THE HOLES. THIS IS NECESSARY TO PREVENT ANY WATER FROM LEAKING INTO THE CAB.



Install the hood hinge plates to the hood hinge. Grind the top and bottom edges (shown with a blue mark) to prep them for welding.



Now it's time to prep the hood. Lay the hood on a flat surface and grab a tape measure. Measure 23" from the center of the hood. The hood should have a hole indicating the center point.



The hood hinge plate measures 2-1/2" wide. Mark that for reference, as shown.



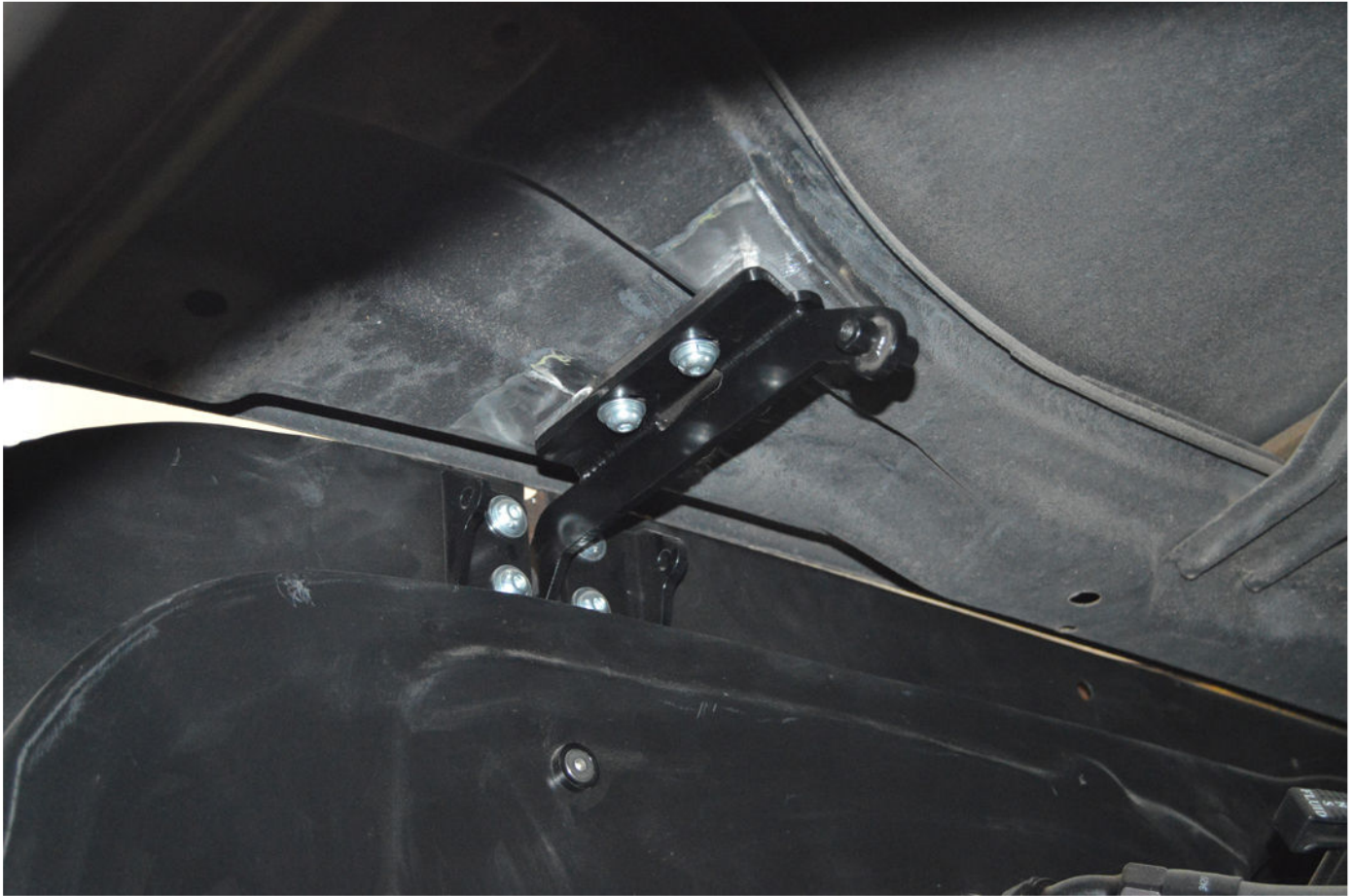
Mark an additional $\frac{1}{2}$ " on each side. Using a square, extend the lines toward the front of the hood. This will be the area to prep. Be sure to clean/prep the surface down to bare metal, as shown in the photo.



Once the hood is prepped, set it back onto the truck. Align it, paying special attention to the gaps on the fenders, cowl and core support.

NOTE - There is some adjustment in the hinges, but it's best to get it as close to perfect as possible before welding the plates onto the hood.

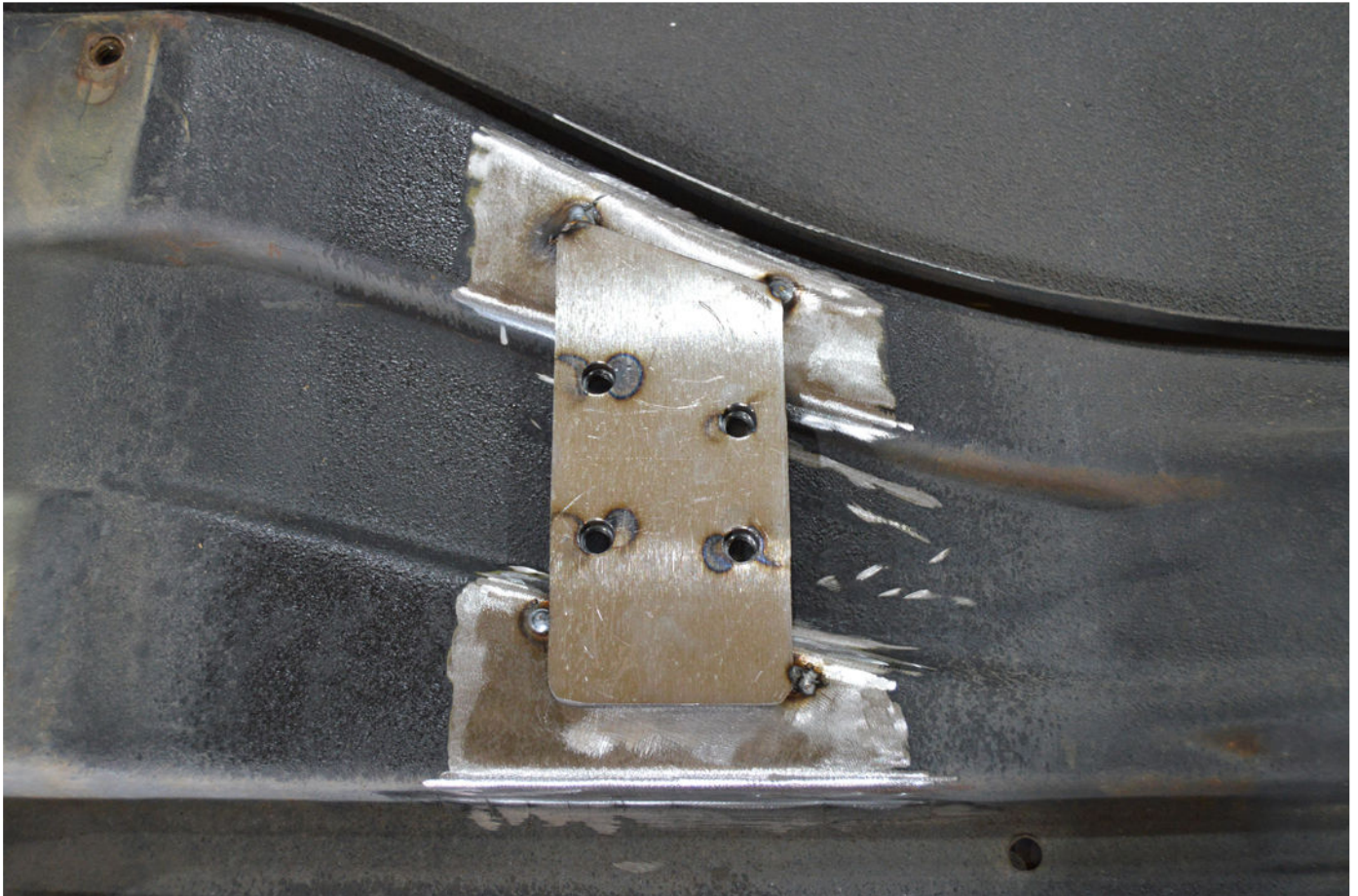
Put the truck on jack stands and remove the front wheels to gain access the hood hinge plates from the wheel well.



This next step can be completed a few different ways. The preferred method is to tack the plates onto the hood with the hood in place on the vehicle. Alternatively, the hood hinge plate location can be traced with a Sharpie or other permanent marker, then remove the hood and tack/weld the plates in place.



With the plates tacked to the hood, remove the hardware holding the plate to the hinge arms and remove the hood from the vehicle.



Weld the hood hinge plates in position. Work your way around the hood hinge plate, allowing the sheet metal to cool between passes.



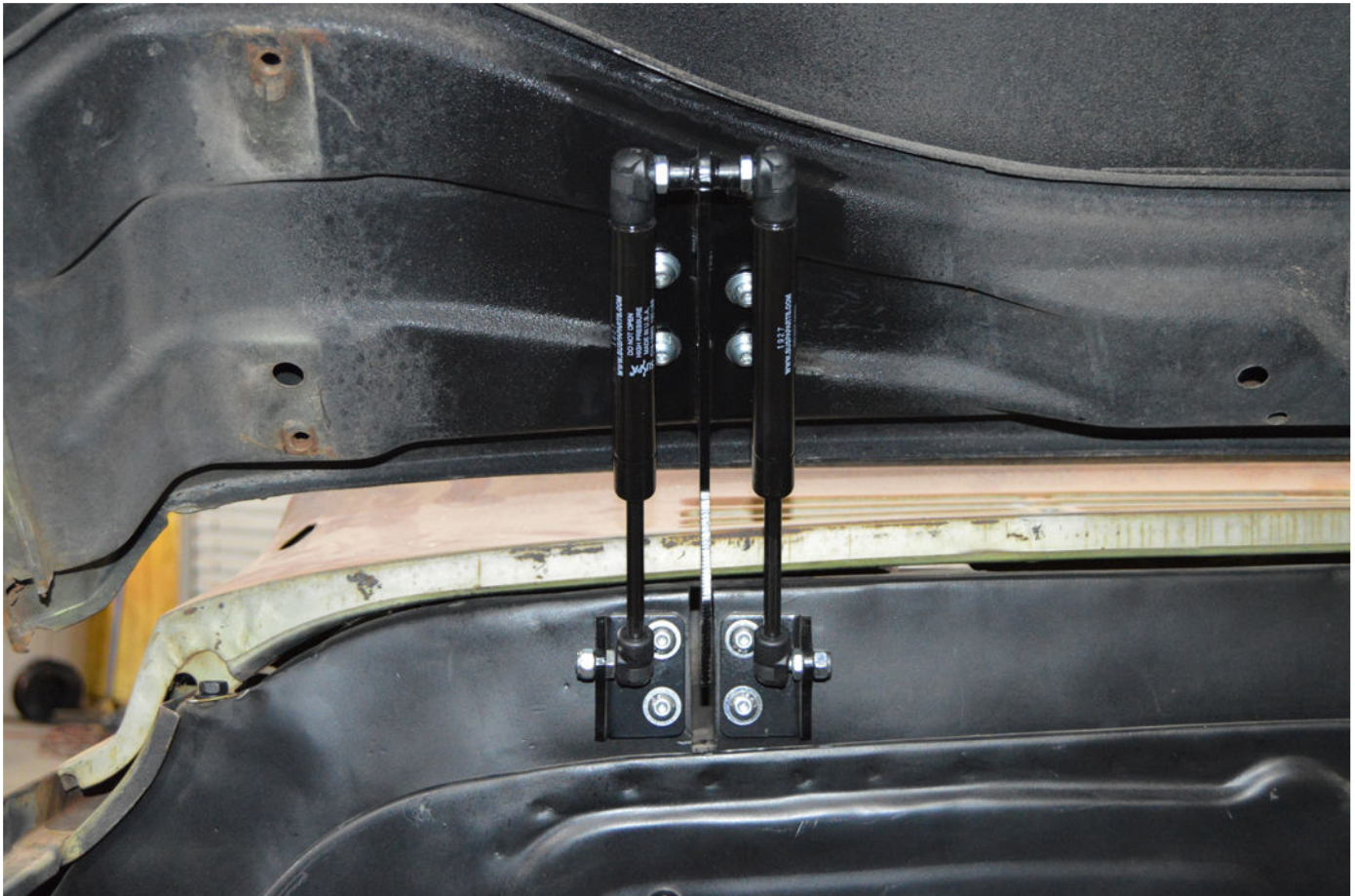
Once welded, reinstall the hood and secure it to the hood hinge arms with the supplied hardware.

Use a hood prop to keep the hood in the open position.

Install the ball studs and snap the gas struts in position, as shown.

NOTE - INSTALL THE GAS STRUTS SO THE CYLINDER IS CLOSEST TO THE HOOD. THIS WILL ENSURE THE STRUT SEALS REMAIN LUBRICATED WHEN THE HOOD IS OPEN.

BE SURE TO CYCLE YOUR HOOD EVERY WEEK OR SO TO EXTEND THE LIFE OF THE STRUTS.



Open and close the hood a few times to check for clearance and fitment.

Make any necessary adjustments.