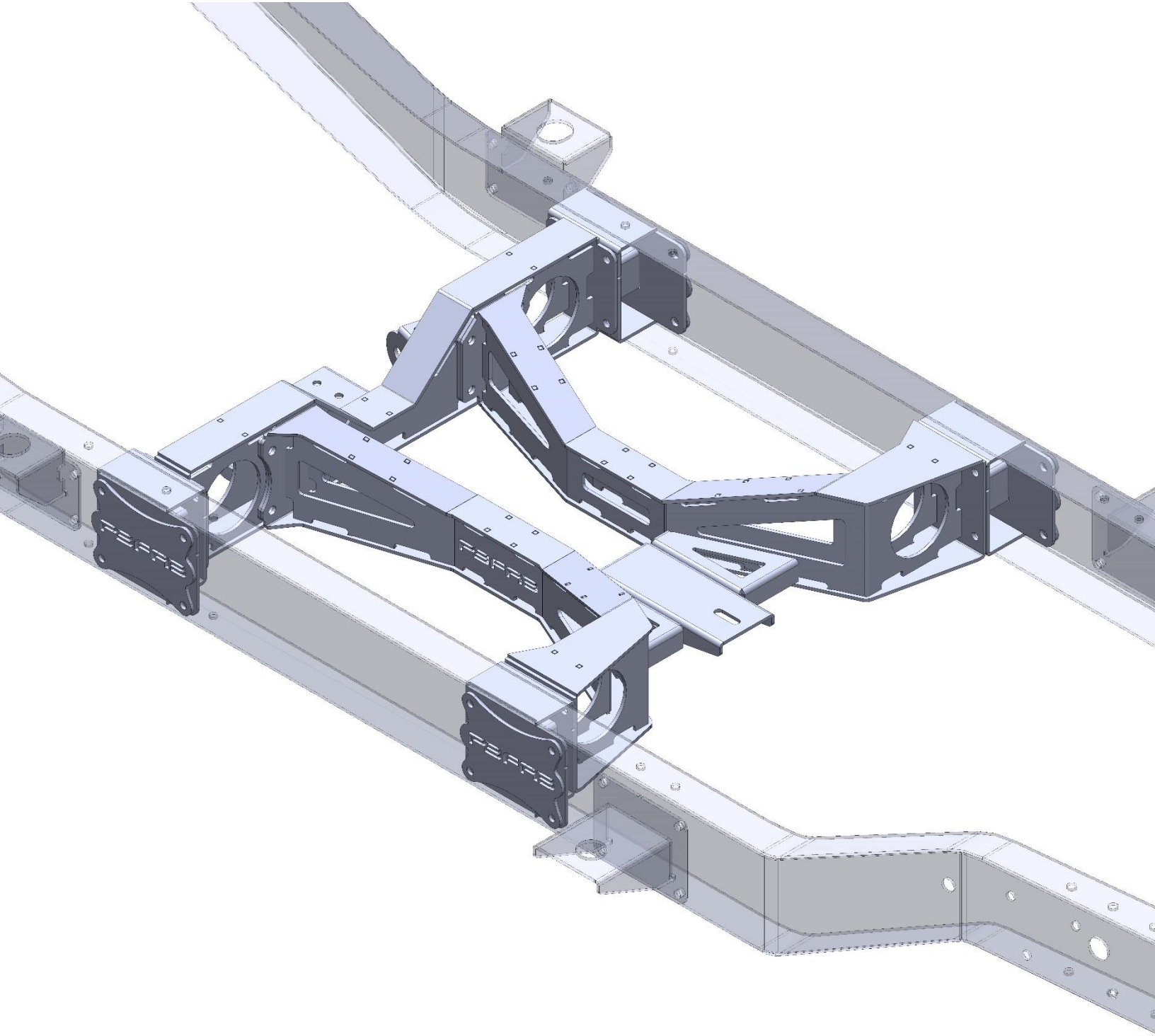


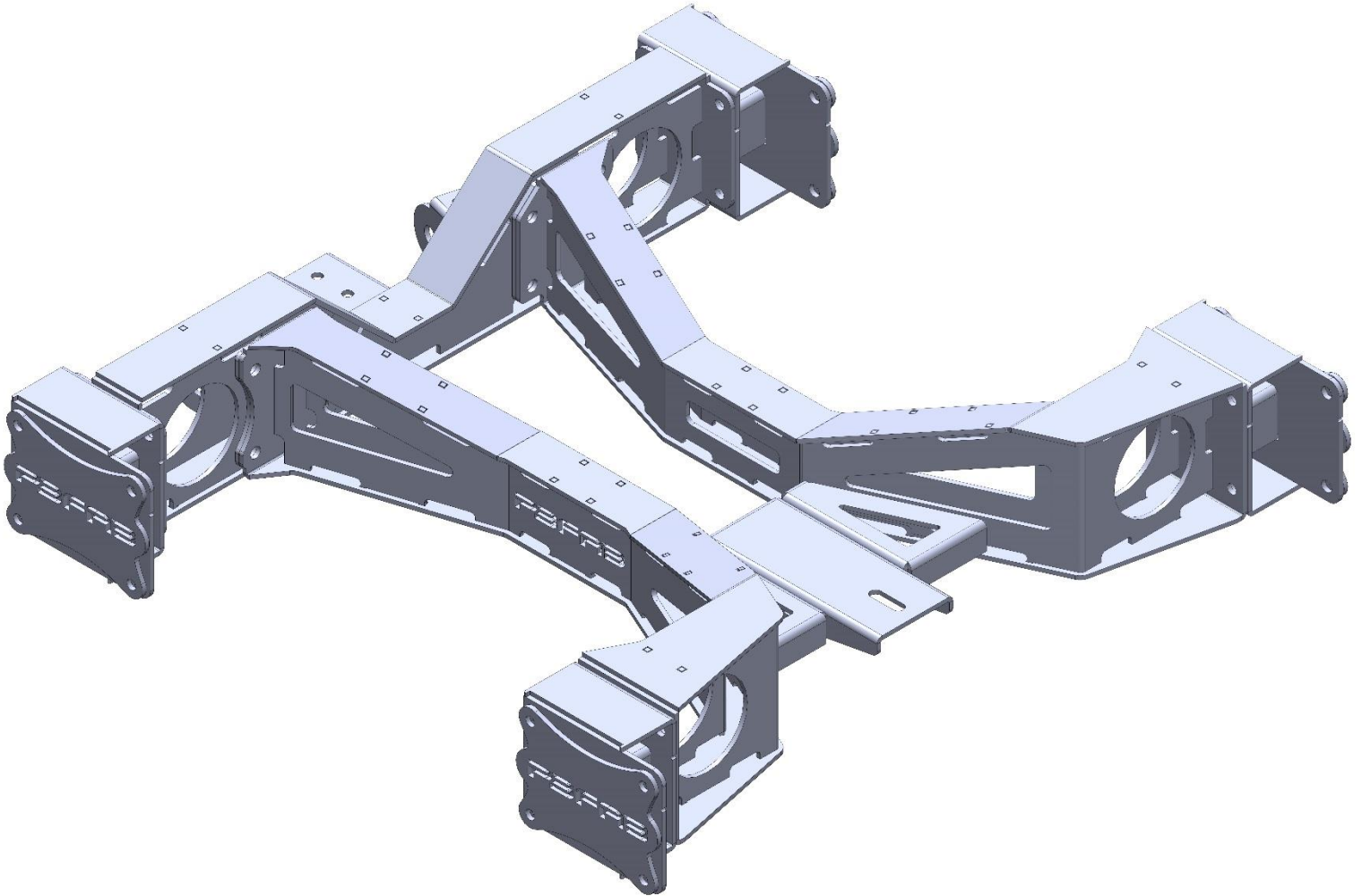
PBFAB INNER FRAME STIFFENER 63-72 C10



1/17/2020

PART# IFS6372-BOXED

DESCRIPTION: INNER FRAME STIFFENER 63-72 "BOXED"



HARDWARE DESCRIPTION:

7/16 X 1.25 GRADE 8 BOLT USS (QTY. 45)

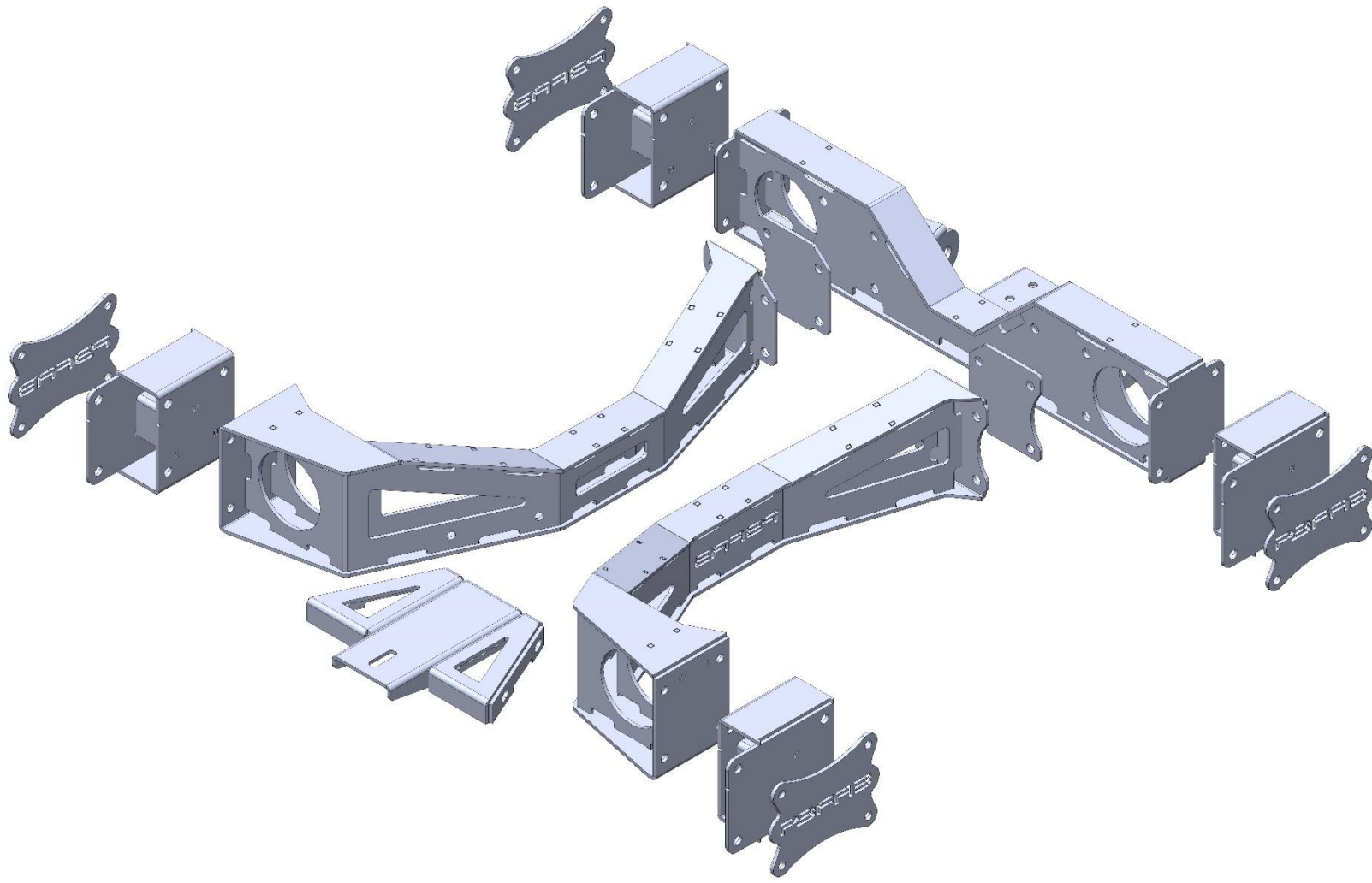
7/16 GRADE 8 NYLOC NUT USS (QTY. 35)

7/16 GRADE 8 LOCKWASHER USS (QTY. 14)

3/8 X 1 GRADE 8 BOLT USS (QTY. 4)

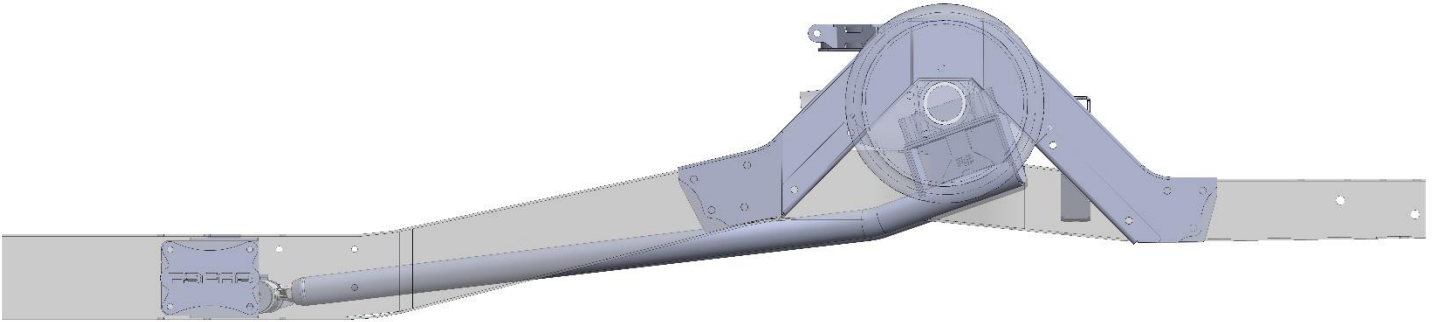
3/8 GRADE 8 FLAT WASHER (QTY. 85)

INNER FRAME STIFFENER EXPLODED VIEW



REFERENCE ABOVE IMAGE TO TAKE INVENTORY OF COMPONENTS TO ENSURE THEY ARE ALL ACCOUNTED FOR AND UNDAMAGED FROM SHIPPING

INSTALL TRAILING ARM X-MEMBER (AIRBAG SUSPENSION)

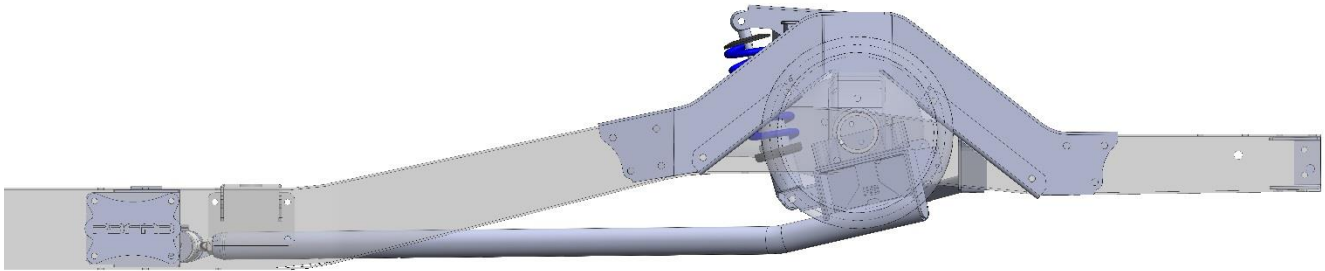


- SLIDE THE TRAILING ARM CROSSMEMBER; TRAILING ARMS; AND REAR DIFFERENTIAL INTO THE FRAME RAILS
- FULLY COMPRESS THE REAR DIFFERENTIAL SO THAT IT BOTTOMS OUT IN THE NOTCH
- ENSURE THE REAR DIFFERENTIAL IS IN THE CENTER OF THE NOTCH
- ENSURE THE TRAILING ARM X-MEMBER IS SQUARE IN THE FRAME
- MARK AND DRILL HOLES FOR TRAILING ARM X-MEMBER MOUNTING BRACKETS (SEE IMAGES ON NEXT PAGE FOR ORIENTATION)
- USE SUPPLIED 7/16 X 1.25 GRADE 8 HARDWARE; TORQUE TO 65 FT-LBS

NOTES:

***** THE REAR SUSPENSION IS DESIGNED SO THAT THE AXLE CENTERLINE COINCIDES WITH THE WHEEL WELL CENTERLINE WHEN THE SUSPENSION IS FULLY COMPRESSED. THE AXLE WILL BE REARWARD OF THE WHEEL WELL CENTERLINE AT RIDE HEIGHT*****

INSTALL TRAILING ARM X-MEMBER (COIL-OVER OR COIL SPRING SUSPENSION)



- SLIDE THE TRAILING ARM CROSSMEMBER; TRAILING ARMS; AND REAR DIFFERENTIAL INTO THE FRAME RAILS
- SET THE REAR DIFFERENTIAL SO THAT IT IS AT THE DESIRED RIDE HEIGHT
- ENSURE THE REAR DIFFERENTIAL IS IN THE CENTER OF THE NOTCH WITH REAR SUSPENSION AT DESIRED RIDE HEIGHT
- ENSURE THE TRAILING ARM X-MEMBER IS SQUARE IN THE FRAME
- MARK AND DRILL HOLES FOR TRAILING ARM X-MEMBER MOUNTING BRACKETS (SEE IMAGES ON NEXT PAGE FOR ORIENTATION)
- USE SUPPLIED 7/16 X 1.25 GRADE 8 HARDWARE; TORQUE TO 65 FT-LBS

NOTES:

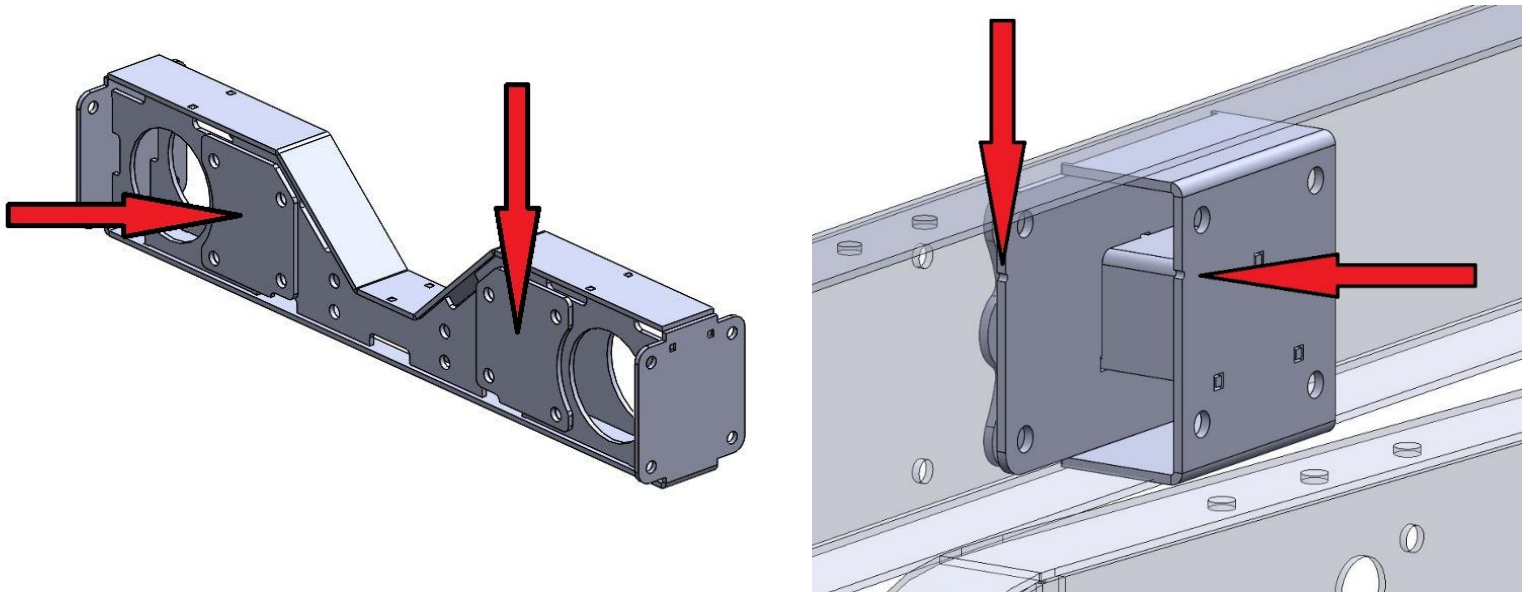
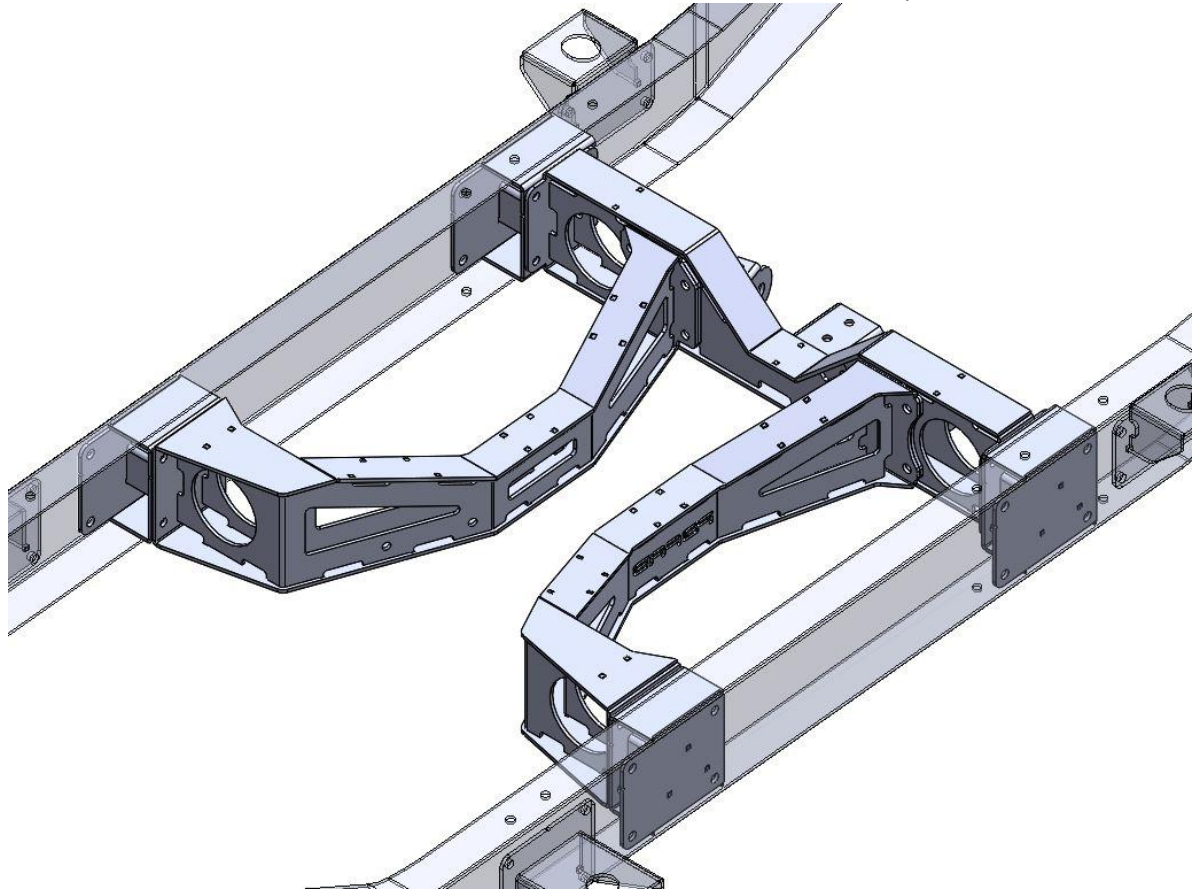
***** THE COIL OVER REAR SUSPENSION IS DESIGNED SO THAT THE AXLE CENTERLINE COINCIDES WITH THE WHEEL WELL CENTERLINE WHEN THE SUSPENSION IS AT ITS RIDE HEIGHT*****

-MOCK-UP FRONT INNER FRAME STIFFENER STRUTS USING SUPPLIED 7/16 GRADE 8 HARDWARE; DO NOT FULLY TIGHTEN AT THIS TIME

-MARK AND DRILL MOUNTING HOLES FOR INNER FRAME STIFFENER TO FRAME MOUNTING BRACKETS (PBFAB LOGO PLATE WILL GO ON OUTSIDE OF FRAME RAIL)

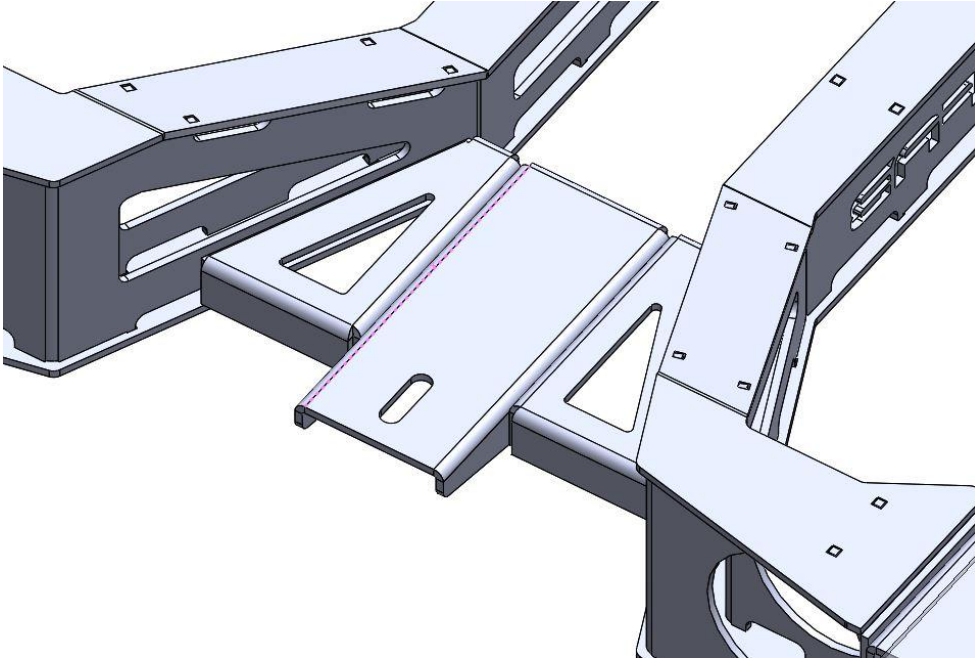
ENSURE SHIM PLATES ARE INSTALLED BETWEEN CARRIER BEARING X-MEMBER AND FRONT STRUTS OF INNER FRAME STIFFENER *** (SEE BELOW IMAGE)

ENSURE STRUT TO FRAME MOUNTING BRACKETS ARE ORIENTED CORRECTLY (SEE BELOW IMAGE)

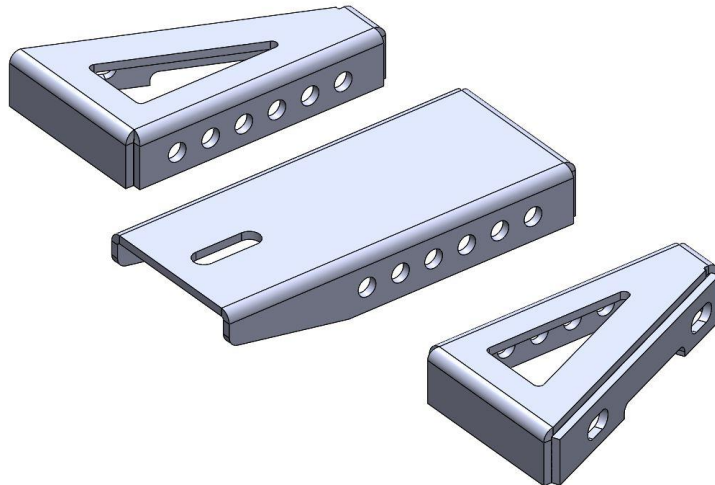


-INSTALL TRANSMISSION MOUNTING BRACKET INTO THE INNER FRAME STIFFENER FRONT STRUTS USING SUPPLIED 3/8 GRADE 8 HARDWARE

DO NOT FULLY TIGHTEN AT THIS TIME



TRANSMISSION MOUNTING BRACKET HAS MULTIPLE FORE-AFT MOUNTING LOCATIONS ALLOWING IT TO WORK FOR MULTIPLE CONFIGURATIONS



IF THE MOUNTING BRACKET DOES NOT FIT YOUR APPLICATION WITHOUT THE USE OF SHIMS OR MODIFICATIONS, PLEASE CONTACT PBFAB. WE WILL HAPPILY MAKE A MOUNTING BRACKET TO FIT YOUR APPLICATION AT NO ADDITIONAL CHARGE

TIGHTEN ALL MOUNTING HARDWARE TORQUE 7/16 HARDWARE TO 65 FT. LBS AND 3/8 GRADE 8 HARDWARE TO 50 FT. LBS