

2

1

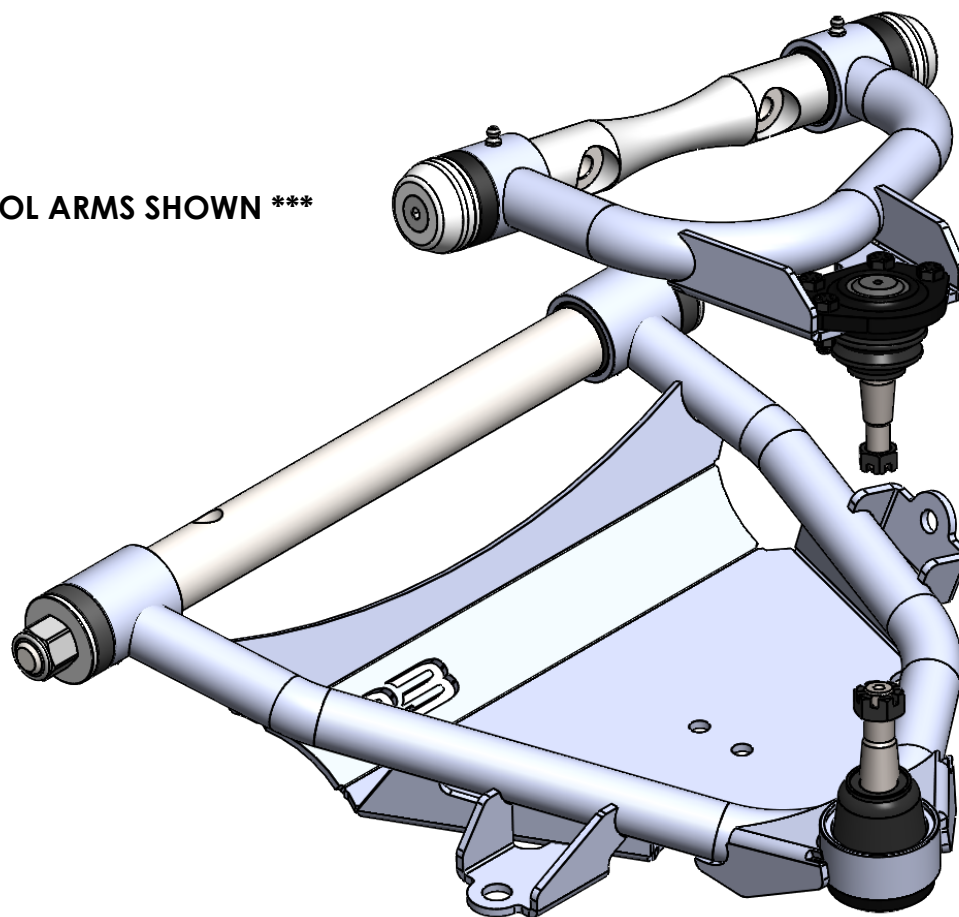
UPPER AND LOWER CONTROL ARM ASSEMBLY GUIDE
FACTORY C10 CROSSMEMBER SPECIFIC

PLEASE FOLLOW EACH STEPS CLOSELY TO ENSURE PROPER INSTALLATION

B

B

*** DRIVER SIDE CONTROL ARMS SHOWN ***



A

A

P3FAB

UPPER AND LOWER CONTROL
ARM INSTALL GUIDE
(FACTORY CROSSMEMBER)

SIZE	DWG. NO.	REV
A		

2

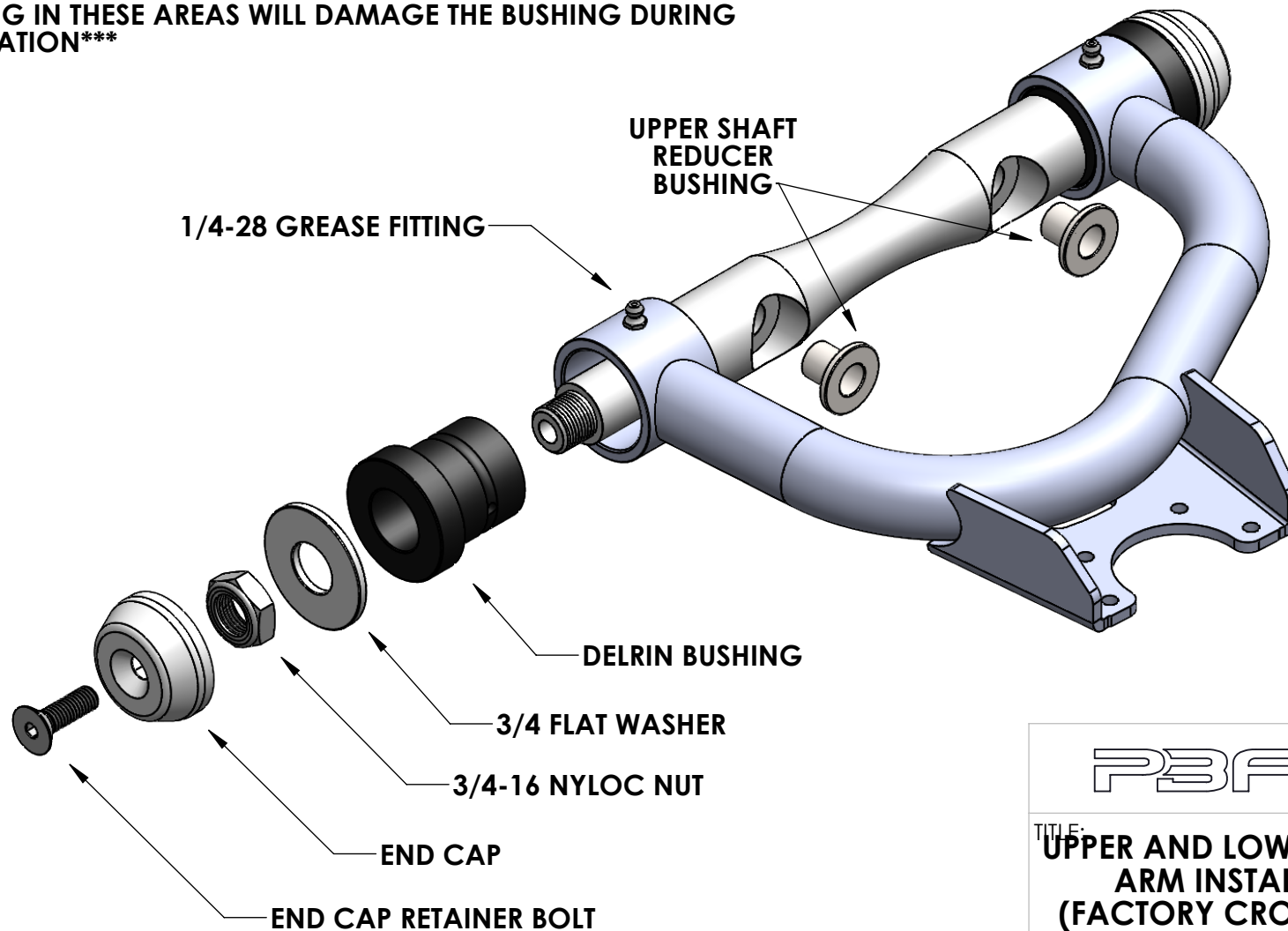
1

2

1

UPPER CONTROL ARM ASSEMBLY EXPLODED VIEW

DO NOT PAINT OR POWDERCOAT SURFACES WHERE BUSHING RIDES INSIDE CONTROL ARM PIVOT TUBE OR ON CROSS-SHAFT; PARTS ARE A MACHINED FIT AND ANY COATING IN THESE AREAS WILL DAMAGE THE BUSHING DURING INSTALLATION



P3FAB

TITLE:
**UPPER AND LOWER CONTROL
ARM INSTALL GUIDE
(FACTORY CROSSMEMBER)**

SIZE	DWG. NO.	REV
A		

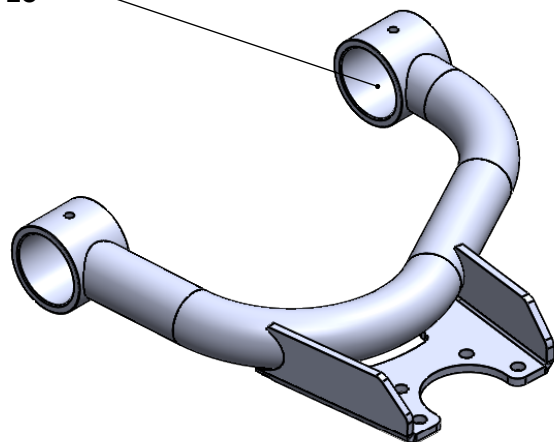
2

1

2

1

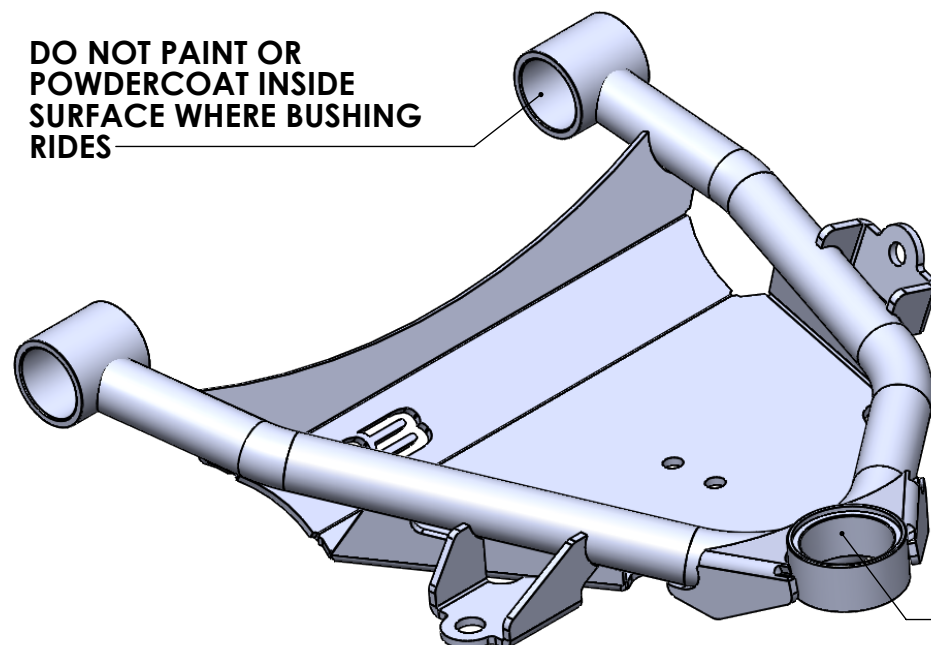
DO NOT PAINT OR
POWDERCOAT INSIDE
SURFACE WHERE BUSHING
RIDES



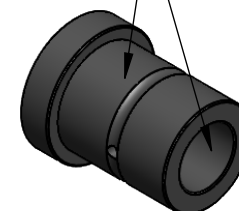
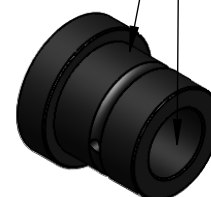
DO NOT PAINT OR
POWDERCOAT SURFACE
WHERE BUSHING RIDES



DO NOT PAINT OR
POWDERCOAT INSIDE
SURFACE WHERE BUSHING
RIDES



APPLY LIGHT COAT OF
SYNTHETIC GREASE TO
INSIDE AND OUTSIDE
SURFACES OF BUSHING TO
AID IN ASSEMBLY



DO NOT PAINT OR
POWDERCOAT
INSIDE SURFACE
WHERE BALL JOINT
INSTALLS

P3FAB

TITLE:
**UPPER AND LOWER CONTROL
ARM INSTALL GUIDE
(FACTORY CROSSMEMBER)**

SIZE DWG. NO.

REV

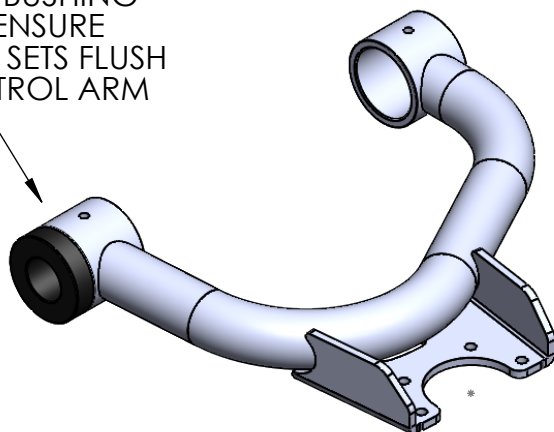
A

2

1

UPPER CONTROL ARM BUSHING AND SHAFT INSTALLATION (CONTINUED ON NEXT PAGE)

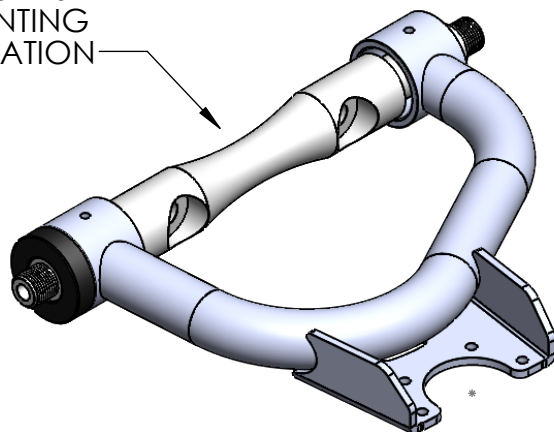
STEP 1: INSTALL BUSHING ON ONE SIDE; ENSURE BUSHING FACE SETS FLUSH AGAINST CONTROL ARM PIVOT TUBE



NOTES: LIGHTLY COAT BUSHING SURFACES WITH A SYNTHETIC BASED GREASE TO AID IN ASSEMBLY

IT MAY BE NECESSARY TO USE A SOFT FACED Mallet TO HELP THE BUSHING SEAT, HOWEVER A PRESS WILL NOT BE NEEDED

STEP 2: INSTALL CONTROL ARM CROSS-SHAFT; ENSURE CROSS-SHAFT MOUNTING SURFACE ORIENTATION IS CORRECT FOR MOUNTING BRACKET CONFIGURATION



P3FAB

TITLE:
**UPPER AND LOWER CONTROL
ARM INSTALL GUIDE
(FACTORY CROSSMEMBER)**

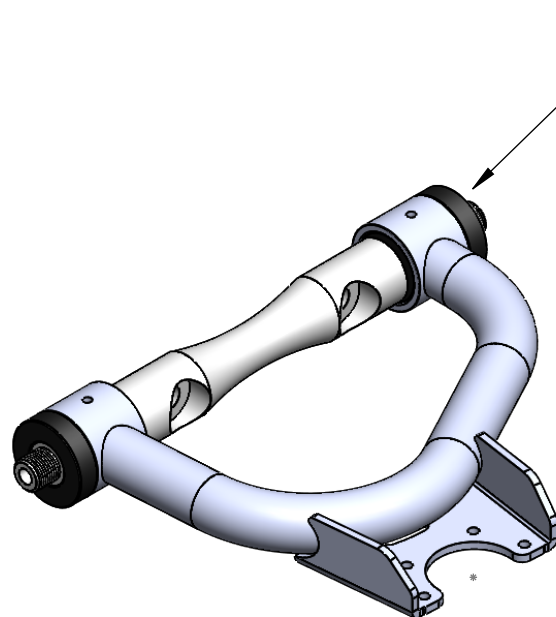
SIZE A	DWG. NO.	REV
------------------	----------	-----

2

1

UPPER CONTROL ARM BUSHING AND SHAFT INSTALLATION

B



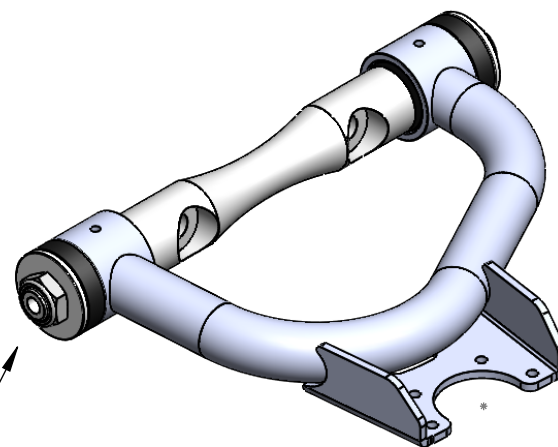
STEP 3: INSTALL BUSHING ON
OTHER SIDE

ENSURE BUSHING FACE SETS
FLUSH AGAINST CONTROL ARM
PIVOT TUBE

STEP 4: INSTALL FLAT WASHER
AND 3/4 NYLOC NUT ON
BOTH SIDES OF CROSS-
SHAFT

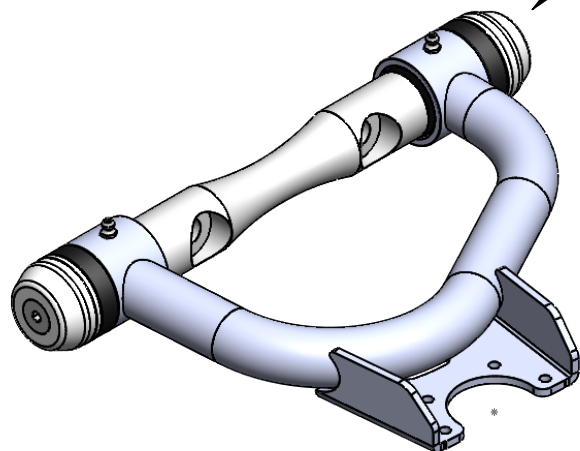
TIGHTEN BY HAND UNTIL FLAT
WASHER SEATS AGAINST
SHOULDER OF CROSS-SHAFT

**DO NOT USE IMPACT
WRENCH OR GUN TO
TIGHTEN NUT**



B

A



STEP 5: INSTALL BILLET END CAPS
USING 3/8 TAPERED HEAD BOLT
**RECOMMENDED TO USE BLUE
LOCTITE**

TORQUE TO 20 FT LBS

INSTALL GREASE FITTINGS AND
INJECT ONE PUMP OF SYNTHETIC
GREASE INTO EACH JOINT

A

P3FAB

TITLE:

**UPPER AND LOWER CONTROL
ARM INSTALL GUIDE
(FACTORY CROSSMEMBER)**

SIZE DWG. NO.

REV

A

2

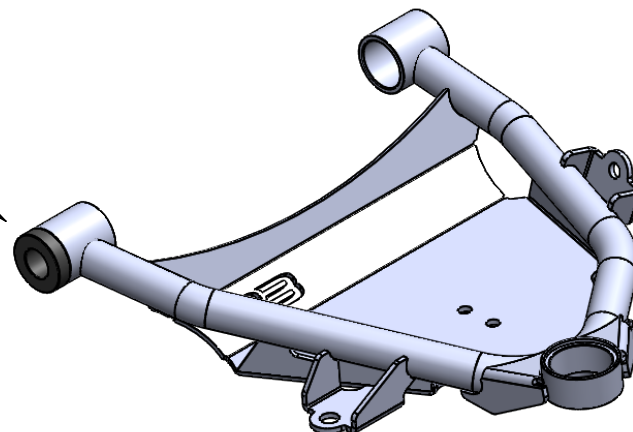
1

2

1

LOWER CONTROL ARM BUSHING INSTALLATION

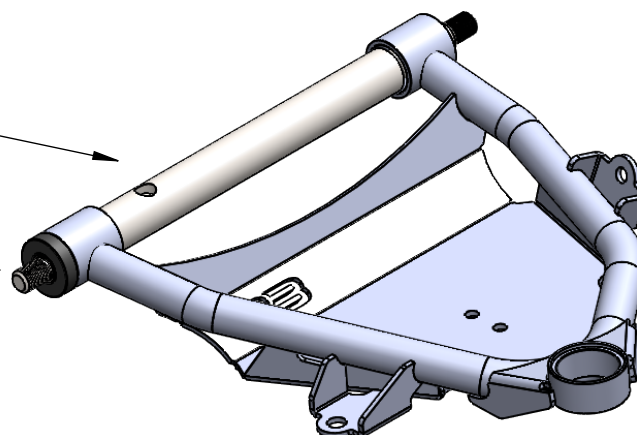
INSTALL CONTROL ARM
BUSHING ON ONE SIDE
OF CONTROL ARM
**ENSURE BUSHING SEATS
FLUSH AGAINST OUTSIDE
FACE OF PIVOT TUBE**



*** IT MAY BE NECESSARY TO
USE A SOFT FACED Mallet
TO PERSUADE THE BUSHING
TO SEAT FLUSH AGAINST THE
CONTROL ARM PIVOT TUBE
**A PRESS WILL NOT BE
REQUIRED *****

INSTALL LOWER CONTROL
ARM SHAFT **ENSURE THAT
THE LOCATING HOLE IN THE
SHAFT FACES TOWARDS
THE FRONT OF THE
CONTROL ARM POINTING
UPWARDS**

**ENSURE FACE
OF SHAFT IS
EVEN WITH
FACE OF
BUSHING**



P3FAB

TITLE:
**UPPER AND LOWER CONTROL
ARM INSTALL GUIDE
(FACTORY CROSSMEMBER)**

SIZE A	DWG. NO.	REV
------------------	----------	-----

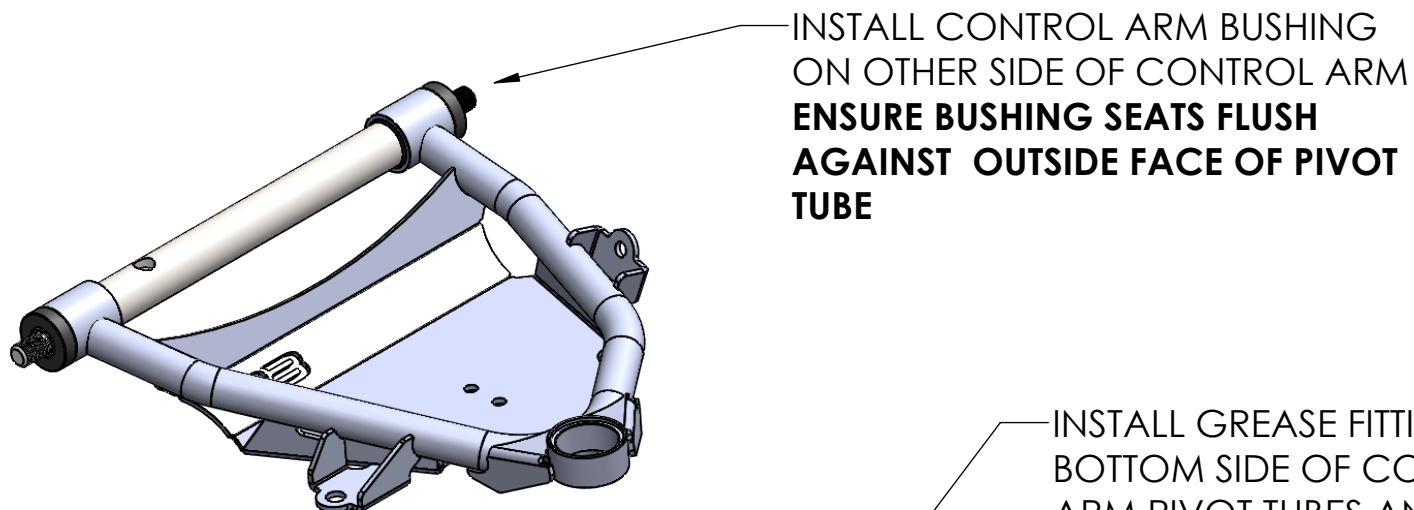
2

1

2

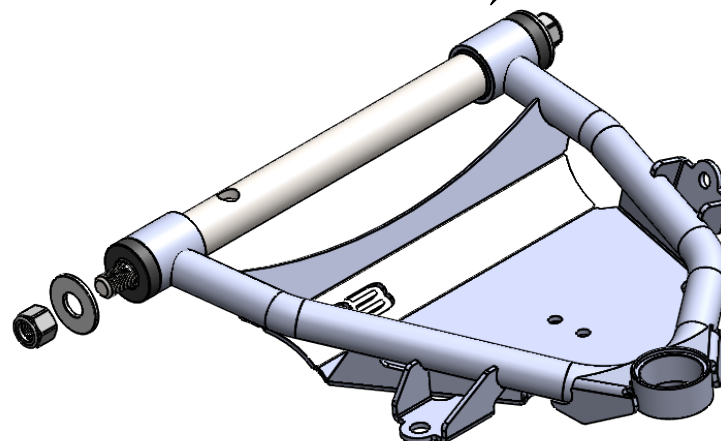
1

LOWER CONTROL ARM BUSHING INSTALLATION



INSTALL GREASE FITTINGS ON
BOTTOM SIDE OF CONTROL
ARM PIVOT TUBES AND INJECT
ONE PUMP OF SYNTHETIC
GREASE INTO EACH JOINT

INSTALL FLAT WASHER
AND NYLOC NUT ON
EACH SIDE OF CONTROL
ARM SHAFT **TIGHTEN
NUT BY HAND UNTL
WASHER SEATS AGAINST
THE FACE OF THE
CONTROL ARM SHAFT;
TORQUE TO 45 FT LBS**



P3FAB

**UPPER AND LOWER CONTROL
ARM INSTALL GUIDE
(FACTORY CROSSMEMBER)**

SIZE	DWG. NO.	REV
A		

2

1

2

1

BALL JOINT INSTALLS
FROM TOP

*** EXPLODED VIEW OF UPPER AND
LOWER CONTROL ARM HARWDARE ***

B

B

A

A

BALL JOINT INSTALLS
FROM BOTTOM

P3FAB

UPPER AND LOWER CONTROL
ARM INSTALL GUIDE
(FACTORY CROSSMEMBER)

SIZE
A

DWG. NO.

REV

2

1

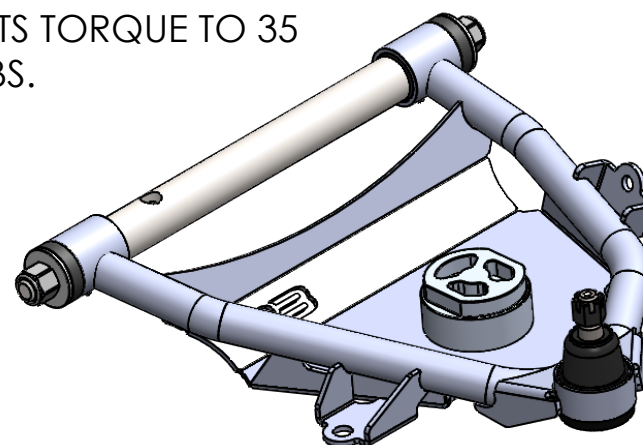
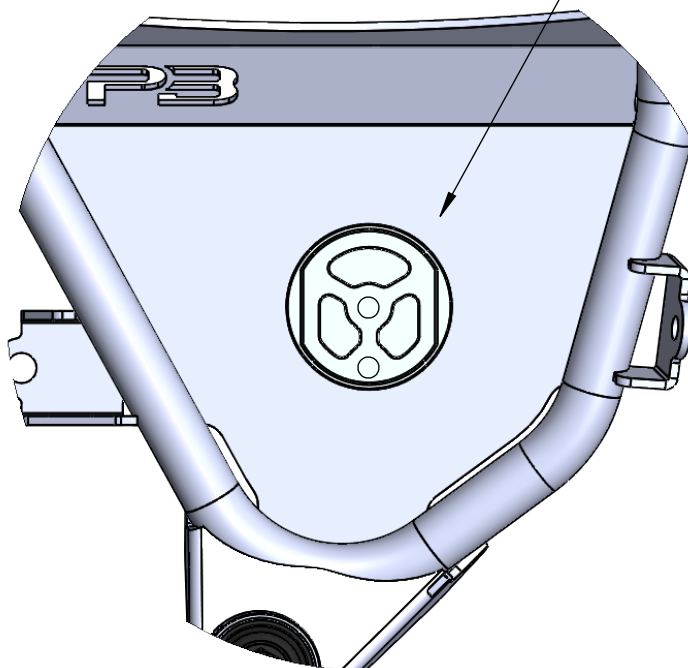
2

1

FOR COIL SPRING APPLICATIONS INSTALL BILLET SPRING RETAINER

*****BILLET SPRING RETAINER
WILL INSTALL SO THAT ITS
ORIENTATION SETS IT
CLOSEST TO THE CHASSIS
CENTERLINE*****

INSTALL BILLET
SPRING RETAINER
USING SUPPLIED 7/16
X 1.25 GRADE 8
BOLTS TORQUE TO 35
FT LBS.



P3FAB

**UPPER AND LOWER CONTROL
ARM INSTALL GUIDE
(FACTORY CROSSMEMBER)**

SIZE
A

DWG. NO.

REV

2

1