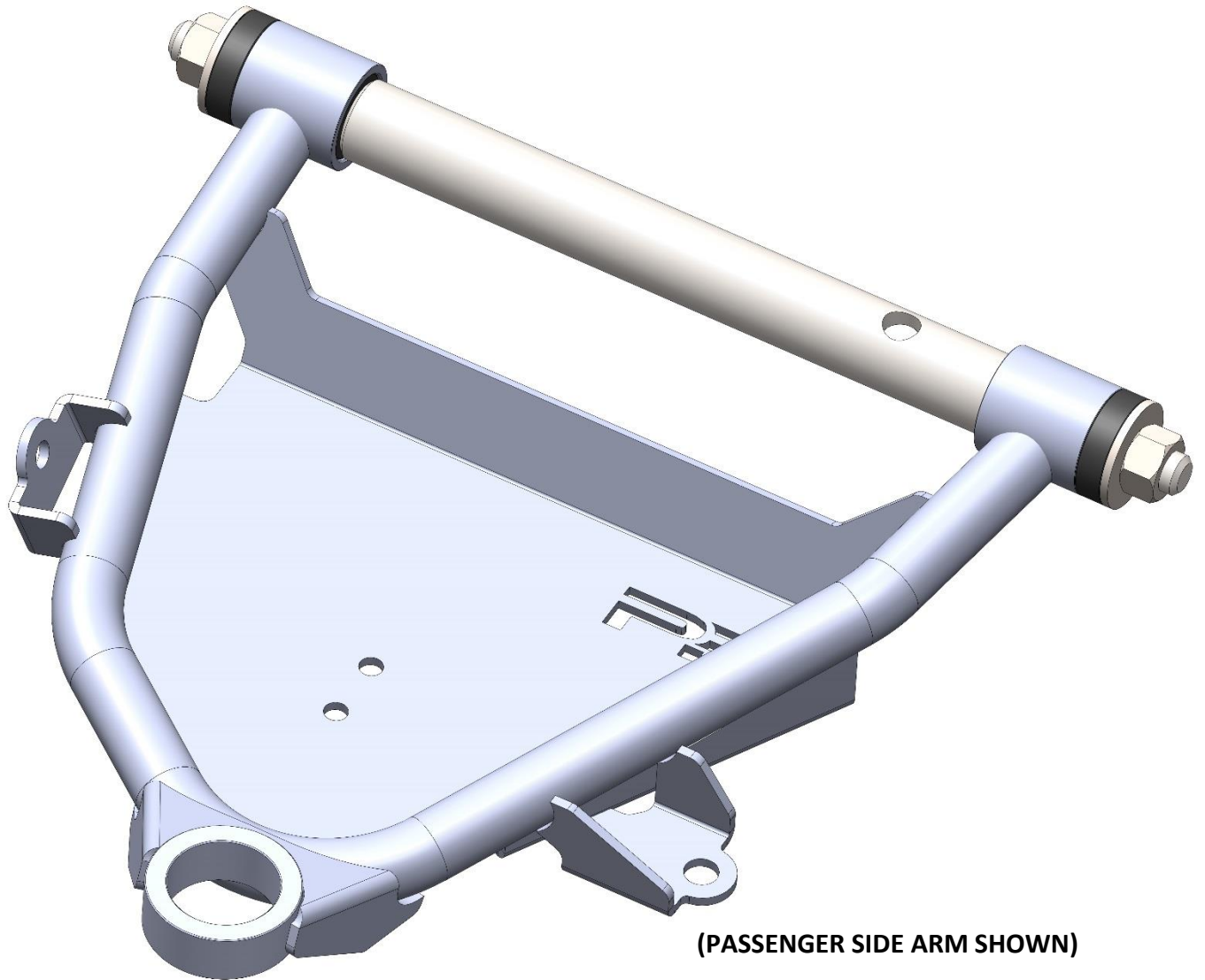
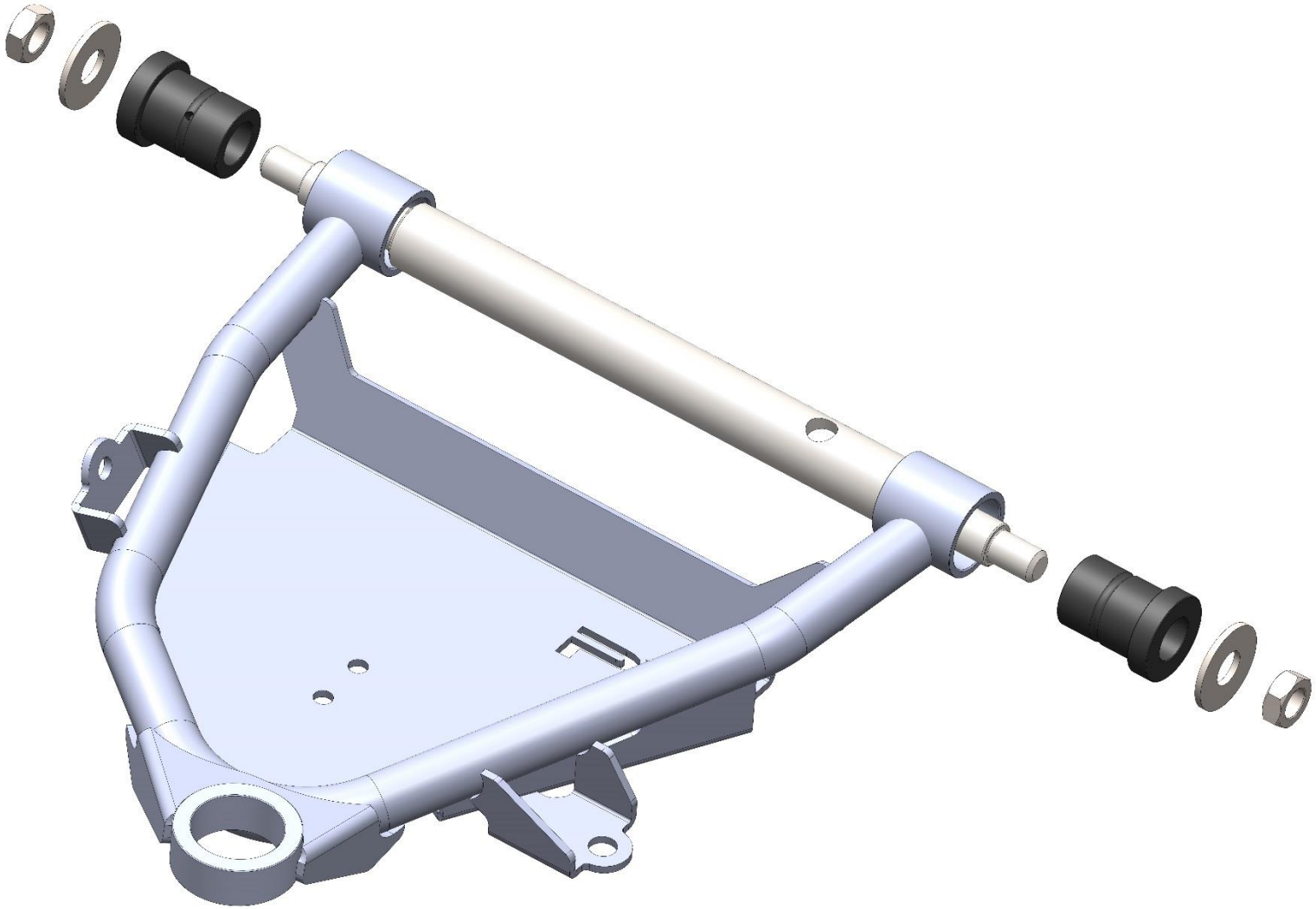


## **PBFAB LOWER CONTROL ARM FOR FACTORY CROSSMEMBER INSTALLATION GUIDE**

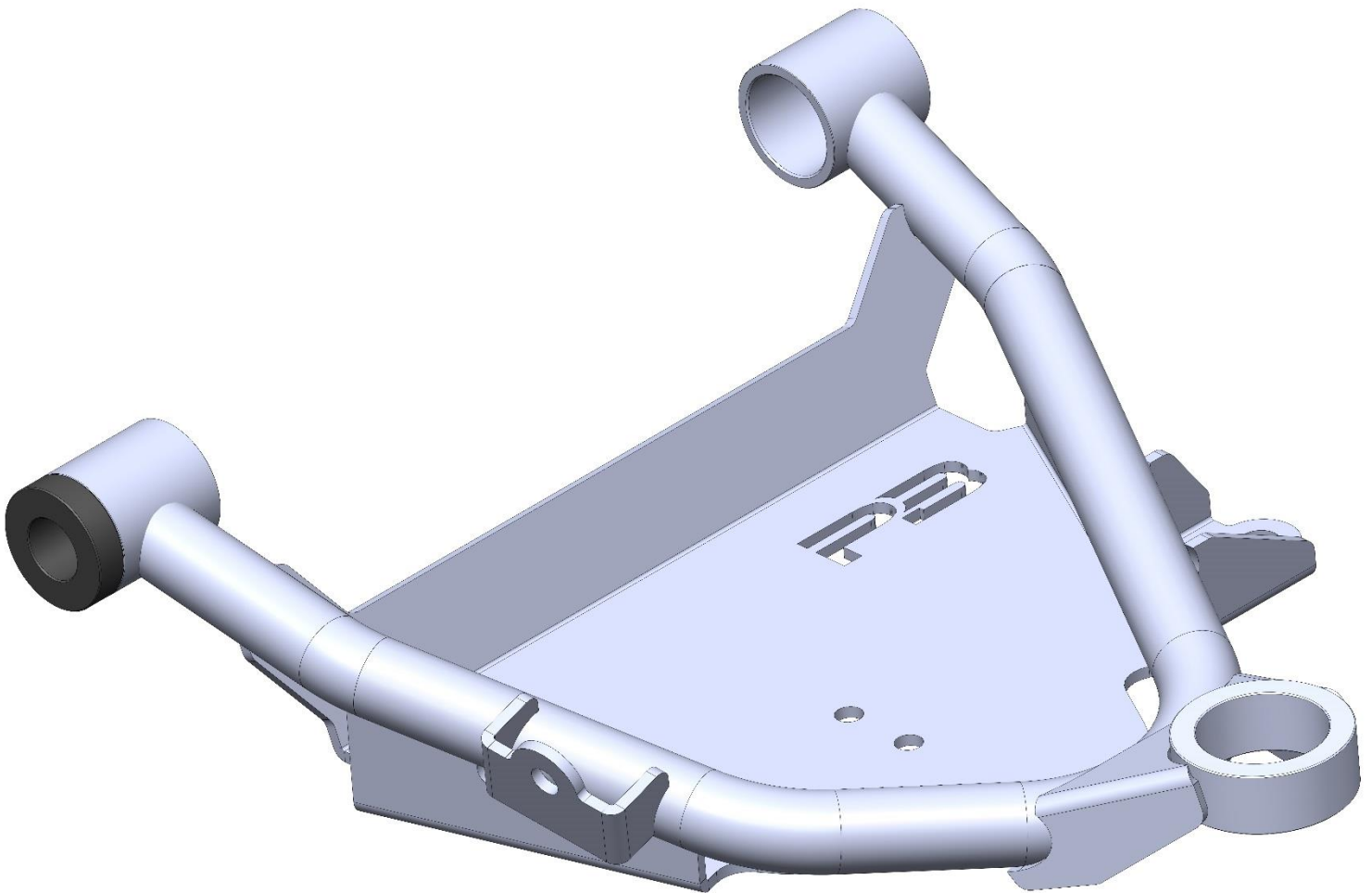


## LOWER CONTROL ARM EXPLODED VIEW (PASSENGER SIDE SHOWN)



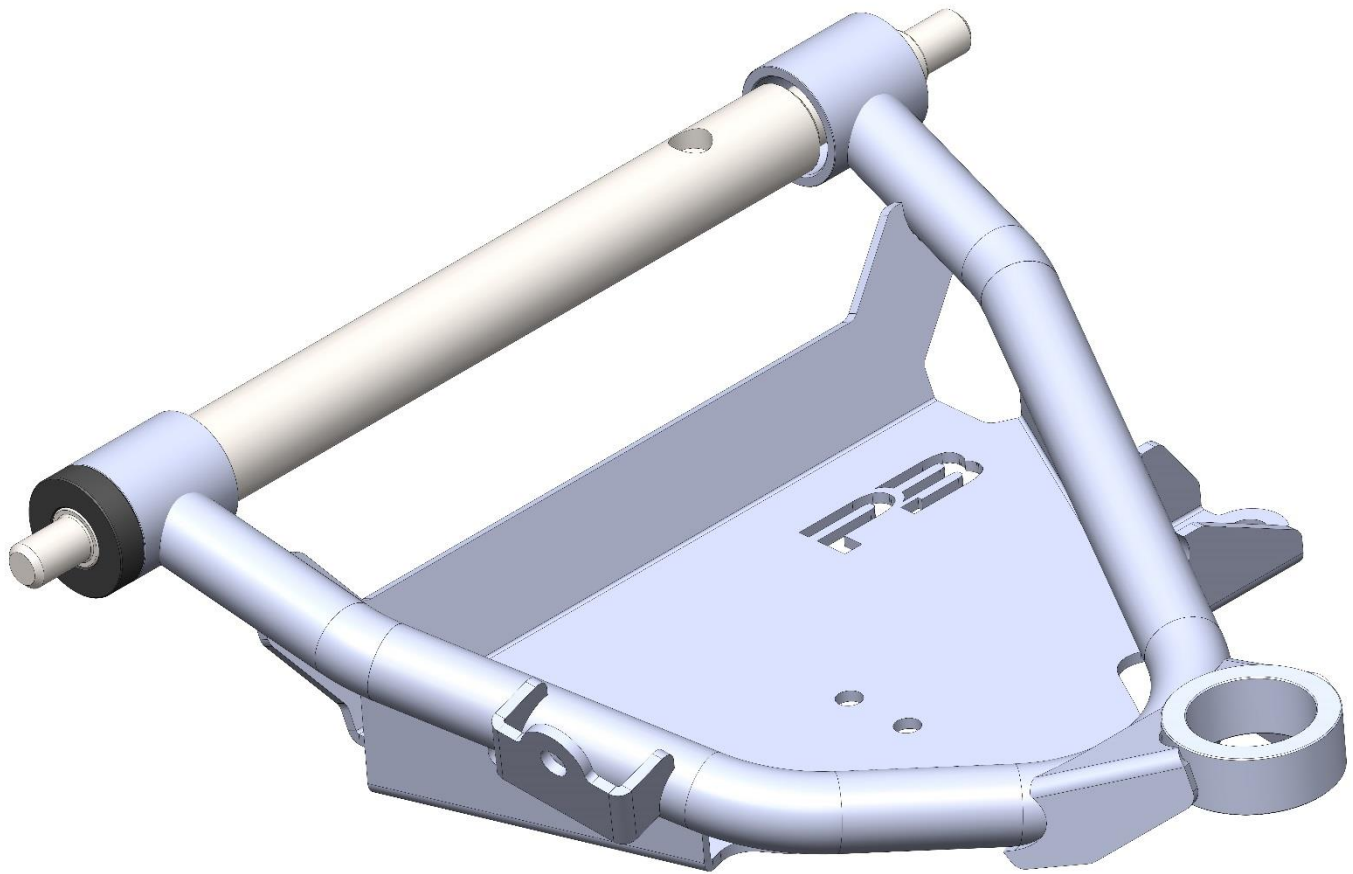
-INSTALL ONE LOWER CONTROL ARM DELRIN BUSHING INTO CONTROL ARM PIVOT TUBE

-ENSURING BUSHING SHOULDER SETS FLUSH AGAINST MACHINED SURFACE OF CONTROL ARM PIVOT TUBE



-INSTALL LOWER CONTROL ARM SHAFT

-ENSURE LOCATING HOLE IN SHAFT FACES TOWARDS THE FRONT OF THE TRUCK



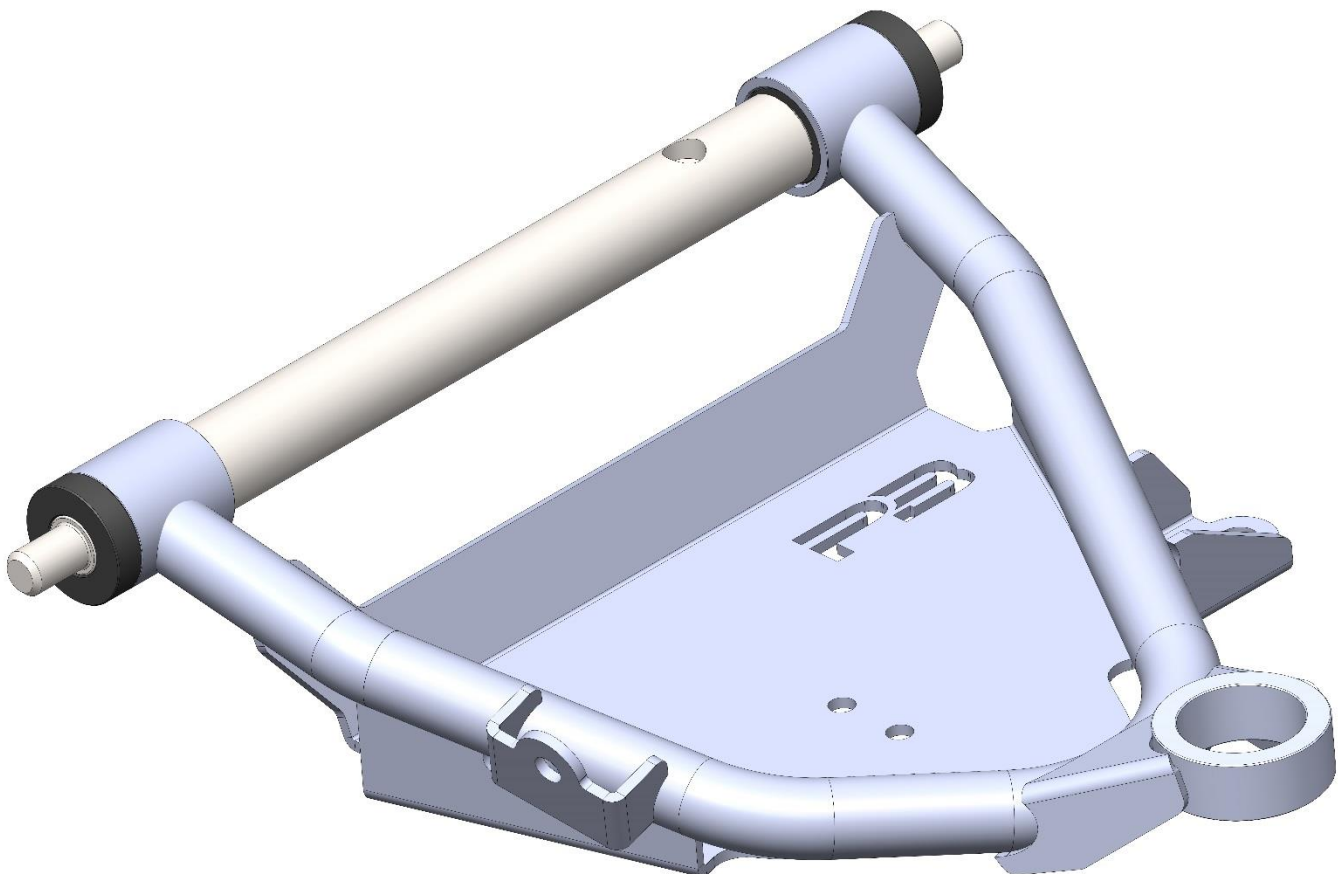
-INSTALL SECOND LOWER CONTROL ARM DELRIN BUSHING INTO OPPOSITE CONTROL ARM PIVOT TUBE

-ENSURING BUSHING SHOULDER SETS FLUSH AGAINST MACHINED SURFACE OF CONTROL ARM PIVOT TUBE

-IF NECESSARY USE A SOFT FACED Mallet OR DEAD BLOW TO TAP THE BUSHING UNTIL THE SHOULDER RESTS AGAINST THE MACHINED FACE

-DO NOT USE THE NUTS AND WASHERS TO "PRESS THE BUSHINGS IN"

-IF BUSHING SEEMS TO BE BINDING AND WILL NOT INSTALL, REMOVE BUSHINGS AND SET IN THE FREEZE FOR APPROX. 10 MINUTES. THIS WILL SLIGHTLY CONTRACT THE BUSHING MATERIAL MAKING IT EASIER TO INSTALL



- INSTALL SUPPLIED 3/4 NYLOC NUTS AND FLAT WASHERS
- TIGHTEN NUTS UNTIL WASHERS CONTACT CONTROL ARM SHAFT SHOULDER
- TORQUE NUTS TO 75 FT LBS.
- INSTALL ZERK FITTING
- LUBE BUSHINGS WITH A HI-TEMP SYNTHETIC GREASE

